

## COUNCIL MINUTES

December 8, 2025

The City Council of the City of Mesa met in the Study Session room at City Hall, 20 East Main Street, on December 8, 2025, at 5:19 p.m.

### COUNCIL PRESENT

Mark Freeman  
Scott Somers  
Rich Adams  
Jennifer Duff  
Alicia Goforth  
Francisco Heredia  
Dorean Taylor

### COUNCIL ABSENT

None

### OFFICERS PRESENT

Scott Butler  
Holly Moseley  
Jim Smith

Mayor Freeman conducted a roll call.

### 1. Review and discuss items on the agenda for the December 8, 2025, regular Council meeting.

All of the items on the agenda were reviewed among Council and staff and the following was noted:

Conflict of interest: None

Items removed from the consent agenda: 8-a

Vice Mayor Somers requested a continuance of agenda Item 9-b, **(Proposed amendments to Chapters 4, 5, 6, 7, 8, 10, 31, 86, and 87 of Title 11 of the Mesa City Code pertaining to Battery Energy Storage Systems. The amendments include, but are not limited to: adding definitions for Battery Energy Storage System, Battery Energy Storage System Facility, Augmentation, and Nameplate Capacity; modifying land use tables to add Battery Energy Storage System and Battery Energy Storage System Facility; establishing development and other standards specific to Battery Energy Storage System Facilities. (Citywide))**, on the Regular Council Meeting agenda, to the January 12, 2026, Regular Council Meeting. He expressed optimism that continued negotiations could lead to a balanced solution that protects public health and safety while supporting economic growth. He stated that a continuance would allow additional time for collaboration and refinement of the proposal, with the expectation of a good-faith effort toward resolution by the next meeting. He emphasized that although he seeks a balanced outcome, he will not compromise on public health and safety in the final decision.

In response to a request from Mayor Freeman regarding agenda Item 8-e, **(An ordinance amending and adopting Mesa City code park regulations sections 6-10-2, 6-10-4, 6-10-7, and 6-10-8 to allow the use of certain electric bicycles, electric scooters and other**

**motorized and non-motorized vehicles in city parks and shared-use paths, subject to certain limitations. (Citywide))**, on the Regular Council Meeting agenda, Parks, Recreation and Community Facilities Director Andrea Moore displayed a PowerPoint presentation and confirmed that the proposed amendment sets the speed limit for electric bicycles (e-bikes) on shared pathways at 15 miles per hour (mph). She pointed out that a speed limit of 5 mph for e-bikes on all park properties was added to the proposed code revisions. **(See Attachment 1)**

Vice Mayor Somers expressed his opinion that a 5-mph speed limit seemed reasonable and would likely be appreciated by walkers and joggers. He added that Council can revisit the issue and make amendments in the future, if needed.

In response to a question from Councilmember Adams, Police Lieutenant Ryan Stokes explained that initial enforcement would focus on education if complaints were received about a specific park, and officers would be deployed to monitor speeds using a radar detector that would be capable of detecting speeds as low as 5 mph.

Vice Mayor Somers stated that the ordinance allows the City to more effectively target enforcement toward individuals who damage parks, while strengthening the park ranger program to assume much of that role. He stated that establishing clear definitions, prioritizing safety, and enforcing when necessary are important steps.

Responding to a question from Councilmember Taylor, Lieutenant Stokes clarified that the City does not intend to station officers in parks for routine speed enforcement, and that officers would respond only when specific complaints are received regarding speeding or criminal damage.

In response to a question from Councilmember Duff, Ms. Moore pointed out that the 15-mph speed limit on shared pathways is consistent with standards already used in other cities and was not proposed to change. (See Page 4 of Attachment 1)

Recreation Assistant Hailey Boiarsky stated that a recently introduced state Senate bill proposes a 15-mph speed limit on shared-use pathways, with a 5-mph limit when passing pedestrians, indicating that Mesa's approach appears consistent with potential statewide direction. She added that uniform standards across cities would benefit riders who travel between communities, reducing the need for extensive signage and ensuring consistent expectations along regional paths.

Transportation Director Erik Guderian confirmed that a 15-mph limit on shared use pathways is the national standard.

Mayor Freeman thanked staff for the presentation.

In response to a request from Councilmember Taylor seeking a continuation on agenda Item 6-b, **(Adopting the MesaCONNECTED Transit-Oriented Development Plan that guides future land use decisions and growth along a 5-mile transit corridor in West Mesa, aligning transit investments with economic growth and community needs while strengthening Mesa's ability to secure future federal funding. (Citywide))**, on the Regular Council Meeting agenda, Assistant Planning Director Rachel Phillips stressed that the final paperwork must be submitted to Phoenix by the end of February in order to close out the grant. She added that some lead time is needed to complete and process the required documentation in advance of that deadline.

Planning Director Mary Kopaskie-Brown confirmed that the item would need to be approved at the January 12, 2026, Regular Council Meeting to ensure the deadline is met.

Mayor Freeman confirmed that this item will be continued to the January 12, 2026, Regular Council Meeting.

Responding to a question from Councilmember Taylor regarding agenda Items 11-a through 11-j, **(Discuss, receive public comment, and take action on the following ordinances pertaining to Mesa City Code Title 4 (Building Regulations))**, and 12-a, **(Discuss, receive public comment, and take action on the following ordinance pertaining to Mesa City Code Title 7 (Fire Regulations))**, on the Regular Council meeting agenda, City Manager Scott Butler indicated that the proposed updates align existing City codes with the latest standards from the International Building Code and related organizations. He noted that the changes were developed collaboratively with the development community and will bring Mesa into conformity with regional practices, providing the consistency developers need to advance their projects.

Development Services Director Nana Appiah recalled that code updates occur periodically, with the last adoption completed in 2018, and the International Building Code evolves as technology advances and as buildings are evaluated for needed improvements, prompting updates to maintain safety and efficiency. He pointed out that this revision process has taken place over the past year, during which staff engaged extensively with the development community and held numerous neighborhood meetings which indicated support from major stakeholders.

Development Services Deputy Director John Sheffer explained that the International Code Council updates building codes every three years, but most Valley cities follow a six-year adoption cycle to give the development community adequate time to adjust. He confirmed that the proposed updates keep Mesa aligned with regional practices and incorporates new technologies and safety standards, including updated fire code provisions related to battery energy storage systems and ensures that Mesa remains current with the latest safety requirements.

In response to a question from Councilmember Taylor, Mr. Sheffer verified that the revisions will take effect approximately 30 days after Council approval. He remarked that updating to the latest building and fire codes also supports the City's Insurance Services Office (ISO) rating which places significant weight on the editions a city has adopted. He noted that the Fire Department is scheduled to undergo its ISO evaluation in January.

2. Acknowledge receipt of minutes of various boards and committees.

- 2-a. Library Advisory Board meeting held on May 20, 2025.
- 2-b. Board of Adjustment meeting held on July 29, 2025.
- 2-c. Library Advisory Board meeting held on September 23, 2025.
- 2-d. Board of Adjustment meeting held on October 1, 2025.
- 2-e. Design Review meeting held on October 14, 2025.

It was moved by Councilmember Adams, seconded by Councilmember Heredia, that receipt of the above-listed minutes be acknowledged.

Upon tabulation of votes, it showed:

AYES – Freeman–Somers–Adams–Heredia–Duff–Goforth–Taylor

NAYS – None

ABSENT – None

Carried unanimously.

3. Current events summary including meetings and conferences attended.

Mayor Freeman and Councilmembers highlighted the events, meetings, and conferences recently attended.

4. Scheduling of meetings.

City Manager Scott Butler stated that the schedule of meetings is as follows:

Thursday, January 8, 2026, 7:30 a.m. – Study Session

4. Adjournment.

Without objection, the Study Session adjourned at 5:54 p.m.

---

MARK FREEMAN, MAYOR

ATTEST:

---

HOLLY MOSELEY, CITY CLERK

I hereby certify that the foregoing minutes are a true and correct copy of the minutes of the Study Session of the City Council of Mesa, Arizona, held on the 8<sup>th</sup> day of December 2025. I further certify that the meeting was duly called and held and that a quorum was present.

---

HOLLY MOSELEY, CITY CLERK

sr  
(Attachments – 1)



# E-Bike Code Updates & Communication Strategy

---

December 4, 2025

Andrea Moore, PRCF Director

Haylie Smith, PRCF Support Services Administrator – SA

Lieutenant Ryan Stokes, Mesa PD

Captain Jim Barnhart, MFMD



**mesa·az**

PARKS, RECREATION AND  
COMMUNITY FACILITIES

# Overview

---

Current Code & City Comparison

Proposed E-Bike Updates to City Code

Vandalism and Safety Concerns with E-Bikes

Public Outreach and Communication Strategy

Enforcement Strategy



# Current Code & Laws

---

E-Bikes are prohibited in City of Mesa parks, only non-motorized bikes are allowed

Riders must be 16 years of age or older to ride an e-bike in Mesa

Understand basic rules of the road and the concept of right-of-way

15 MPH speed limit on shared-use paths



# City Comparison

	Gilbert	Scottsdale	Tempe	Phoenix	Chandler
E-Bikes Allowed In Parks?	✓	✓	✓	⊘	⊘
Stipulations?	Class 1, 2, & 3	Class 1 & 2	Motor Disengaged	N/A	N/A
Age Requirement?	✓	✓**	✓	✓	✓**
Helmet Requirement?	⊘	⊘	✓	⊘	⊘

\*\*Age requirement for Class 3 E-Bikes only

# Updates to City Code

---

Definitions added for E-Bikes and difference between motor vehicles and motorized electric vehicles

Class 1 & 2 E-Bikes & E-Scooters are allowed in City of Mesa parks wherever bikes are allowed

\*Must be operated safely (5 MPH speed limit in parks added to traffic code)

\*Helmet requirement added to traffic code for riders under 18

Multi-use path language in parks code → Shared-use path

# Shared-Use Paths & Sidewalks

Class 1 & Class 2 E-Bikes and E-Scooters will be allowed on shared-use paths (canal paths) AND on sidewalks in parks

Current

15 MPH Speed Limit

Shared-use Path



\*New\*

5 MPH Speed Limit










Sidewalk in Park



# E-Bike Definition

A vehicle having two or three wheels, with fully operable pedals, and an electric motor not exceeding seven hundred fifty (750) watts of power.

Usage is on the rise.

								
E - HYBRID			E - FAT			E - CRUISER		
								
E - ROAD			E - MOUNTAIN			E - GRAVEL		
								
E - FOLDING			E - CARGO			E - HUNTING		

# E-Bike Classifications

	Bicycle			Electric Mini Scooter		Electric Standup Scooter	
	Class 1 E-Bike	Class 2 E-Bike	Class 3 E-Bike				
Pedal Assist	✓	✓	✓ **	N/A	N/A		
Top Speed	N/A	20 MPH	28 MPH	10 MPH	20 MPH		
Currently Allowed in Parks?	✓	⊘	⊘	⊘	⊘		
Allowed in Parks w/ Code Updates?	✓	✓	✓	✓	✓		

\*\*Class 2 pedaling NOT REQUIRED for motor assistance



# Clear Definitions: Motor Vehicle vs. Motorized Electric Vehicle

## Motor Vehicle

A self-propelled vehicle or, for the purposes of the laws relating to the imposition of a tax on motor vehicle fuel, a vehicle that is operated on the highways of this state and that is propelled by the use of motor vehicle fuel. Motor vehicle includes, but is not limited to, an all-terrain vehicle, dune buggy, vehicle fuel powered automobile or truck, gas powered moped, motorcycle, motor driven cycle, motor vehicle, or off-road recreational motor vehicle.

## Motorized Electric Vehicle

A vehicle including, but not limited to, auto cycle, **class 1 electric bicycle\***, **class 2 electric bicycle\***, class 3 electric bicycle, **electric miniature scooter\***, **electric mobility device\***, **electric standup scooter\***, electric powered automobile or truck, golf cart, electric powered moped, **motorized wheelchair\***, motorized quadricycle, motorized skateboard, neighborhood electric shuttle, neighborhood electric vehicle, personal mobile cargo carrying device, or utility cart.

*\*Allowed in parks  
with code  
updates where  
bikes are allowed*

# What does “Operated Safely” Mean?

---

Watching the speed (5 MPH park speed limit)

Using primarily on sidewalks in parks (NOT playgrounds, benches, tables, etc.)

Yielding right-of-way to pedestrians or people using a mobility device

Helmet requirement under 18

\*Riders must be 16 – it’s already the law\*

# Seeing Damage Across Parks from Various Vehicle Types

## Motor Vehicle

A self-propelled vehicle or, for the purposes of the laws relating to the imposition of a tax on motor vehicle fuel, a vehicle that is operated on the highways of this state and that is propelled by the use of motor vehicle fuel. Motor vehicle includes, but is not limited to, an **all-terrain vehicle\***, dune buggy, vehicle fuel powered automobile or truck, **gas powered moped\***, **motorcycle\***, **motor driven cycle\***, motor vehicle, **or off-road recreational motor vehicle\***.

## Motorized Electric Vehicle

A vehicle including, but not limited to, auto cycle, class 1 electric bicycle, class 2 electric bicycle, **class 3 electric bicycle\***, **electric miniature scooter\***, electric mobility device, **electric standup scooter\***, electric powered automobile or truck, **golf cart\***, **electric powered moped\***, motorized wheelchair, **motorized quadricycle\***, **motorized skateboard\***, neighborhood electric shuttle, neighborhood electric vehicle, personal mobile cargo carrying device, or utility cart.

*\*Damaging our parks*





Stapley



Inspirian @ Eastmark

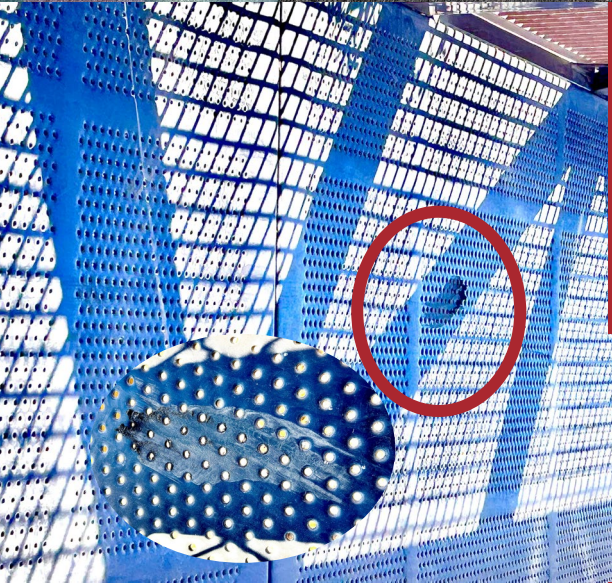


Desert Arroyo

Eastmark

Inspirian @ Eastmark

Candlelight





# E-Bike Battery Hazards



## The Problem

Damaged or defective batteries can overheat, catch fire, or explode

Lithium-ion battery fires give off toxic gases, and they burn extremely hot

### Signs of a Problem

Unusual odor      Leaking

Change in color      Smoking

Too much heat      Not keeping a charge



# E-Bike Battery Hazards

---

## Safety Tips

Only purchase and use devices, batteries, and charging equipment that are listed by a nationally recognized testing lab and labeled accordingly

Always follow the instructions from the manufacturer

Only use the battery and the charger that were designed for, and came with, the device

Do not keep charging the device or device battery after it is fully charged

Only charge one device or device battery at a time to prevent overloading the circuit

Keep batteries at room temperature when possible. Do not charge them at temperatures below 32°F (0°C) or above 105°F (40°C)

# E-Bike Battery Hazards

---

## Safety Tips

Do not store batteries in direct sunlight or inside hot vehicles and keep away from children and liquids

Store e-bikes, e-scooters, and batteries away from exit doors and anything that can get hot or catch fire

Only have device repairs performed by a qualified professional

Do not put lithium-ion batteries in the trash – recycling is always the best option – take the batteries to a battery recycling location or contact your local waste department for disposal instructions

**If You See a Fire      Leave the building immediately**

**Don't try to fight the fire**

**Call 9-1-1**

## **Impaign Goals**

1. Increase safety throughout our community
2. Reduce property damage incidents
3. Increase community awareness of laws
4. Encourage peer accountability and reporting
5. Position Mesa as a proactive City prioritizing safety & accessibility

**Slow Your Roll. Safety's the Goal.**

**Safe Rides. Good Vibes.**

**Share the Space. Enjoy the Place.**

**Slow Down, So Fun Goes Around.**



**Mesa, Mind Your  
Motors So Good Times  
Keep On Rolling**



# Mesa, Mind Your Motors So Good Times Keep On Rolling

## Primary Audiences

Parents of Children Ages 10-17

Adult Park Visitors

Property Owners/Nextdoor Users

## Secondary Audiences

Teens & Young Adults Ages 13-24

E-Bike Retailers & Rental Companies

## Campaign Pillars

### Be Mindful Of...

**The Law**

**Safety**

**Community  
Property**



# Community Awareness

## Compliance & Enforcement

## Course Correction

# Be Mindful Of...”

Riders must be 16 years or older

E-Bikes and E-Scooters are only allowed  
on sidewalks in parks

Helmets are required for riders under 18

5 MPH speed limit in parks

# Mesa, Mind Your Motors So Good Times Keep On Rolling

Newsletter Articles (partner with HOAs)

Flyers & Postcards

Social Media Posts

Website Updates

Billboards

# Enforcement Strategy

After a comprehensive educational campaign to the public with various City of Mesa departments and the school districts, enforcement deployments will begin

Enforcement efforts will be data-driven to specific areas with reported criminal damage to COM parks, high crash locations and reported violations of Mesa City Code and ARS

Enforcement efforts will include the traffic division and all five patrol divisions (patrol and specialty units)



Vista Monterey



# Thank you



**mesa·az**  
PARKS, RECREATION AND  
COMMUNITY FACILITIES