

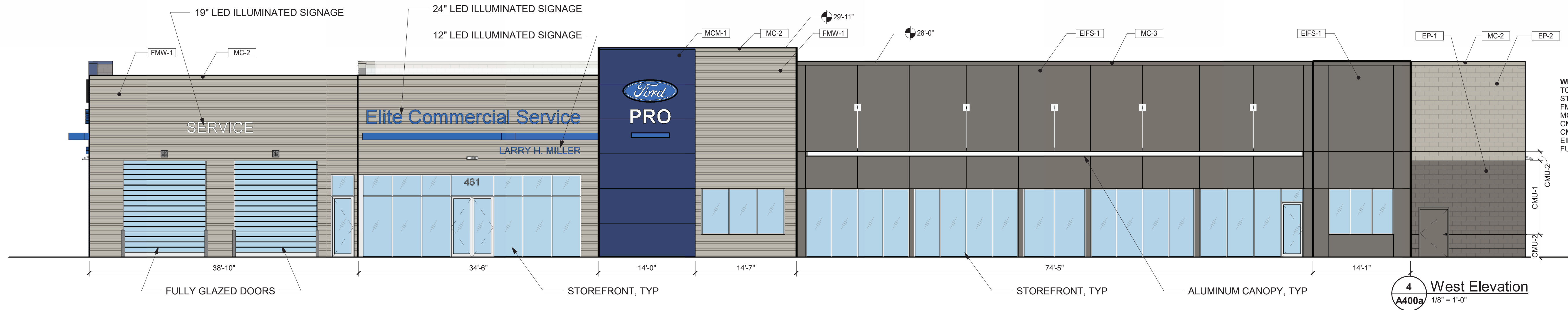
EXTERIOR FINISH SCHEDULE

	CODE	MATERIAL	MANUFACTURER	COLOR	SIZE/DESCRIPTION
PAINT	EP-1	EXTERIOR PAINT	SHERWIN WILLIAMS	GAUNTLET GRAY - SW 7019	
	EP-2	EXTERIOR PAINT	SHERWIN WILLIAMS	MINDFUL GRAY - SW7016	
METAL PANEL	MCM-1	METAL COMPOSITE MATERIAL	ALPOLIC	RAPTURE BLUE	SUPPLIED AND INSTALLED BY VENDOR
	FMW-1	FORMED METAL WALL PANEL	ARCONIC	CASTLE GRAY	OR TO MATCH MINDFUL GRAY - SW7016
	EIFS-1	EXTERIOR INSULATION FINISH SYSTEM	SEE SPEC	MATCH EP-1	
MISC	MC-1	METAL COPING	ALPOLIC	MATCH MCM-1	SUPPLIED AND INSTALLED BY VENDOR. GC COORDINATE & PROVIDE BLOCKING
	MC-2	METAL COPING	SEE SPEC	MATCH EP-2	
	MC-3	METAL COPING	SEE SPEC	MATCH EP-1	
MASONRY WALL	CMU-1	PAINTED MASONRY WALL	SEE SPEC	SEE ELEVATIONS	SPLIT FACE MASONRY
	CMU-2	PAINTED MASONRY WALL	SEE SPEC	SEE ELEVATIONS	SMOOTH FACE MASONRY
STOREFRONT	SF-1	EXTERIOR STOREFRONT	KAWNEER	CLEAR ANODIZED	4-12" DEEP SYSTEM

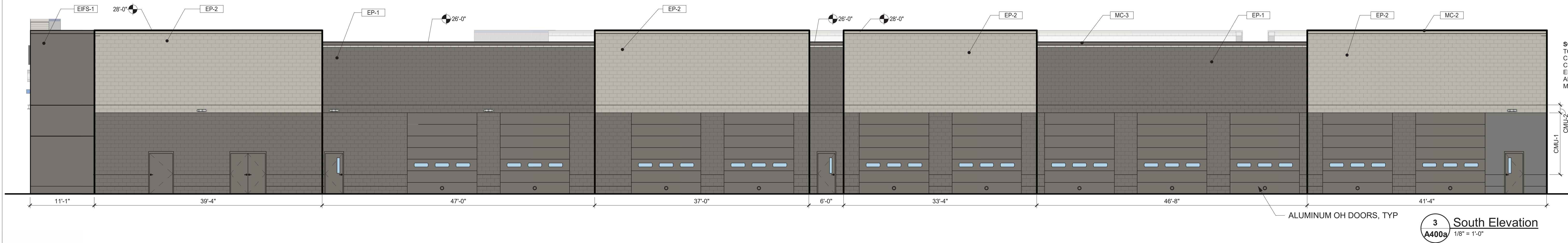
**NOT
RELEASED FOR
CONSTRUCTION OR
PERMIT**

Copyright © 2024 Praxis, LLC
All rights reserved. Specifications, computer files, field data, notes and other documents and instruments prepared by Praxis3 and its affiliates are the property of Praxis3 and its affiliates. All other rights reserved. No part of this document may be reproduced or transmitted in any form or by any means, electronic or mechanical, including photocopying and recording, or by any information storage and retrieval system, without the prior written permission of Praxis3, LLC.

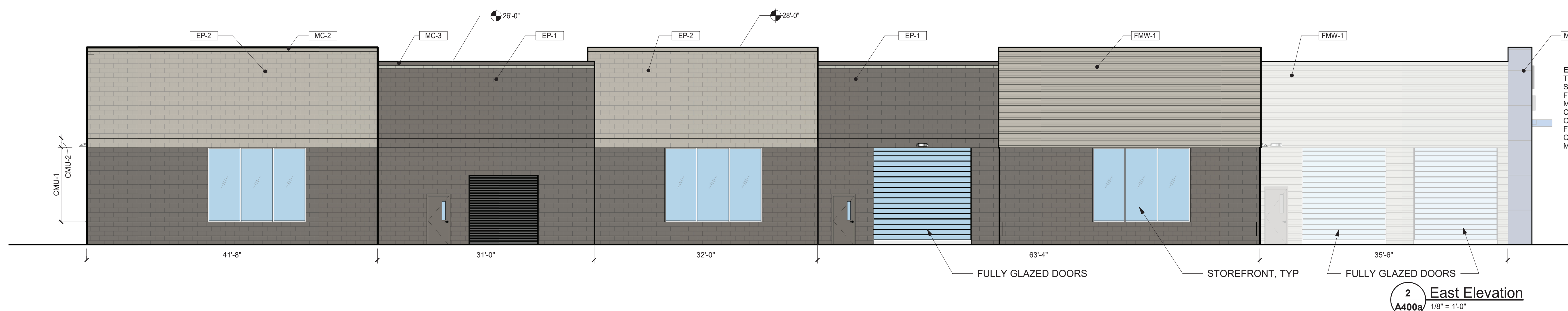
Rev	Date	Comments
09.11.23		30% Set



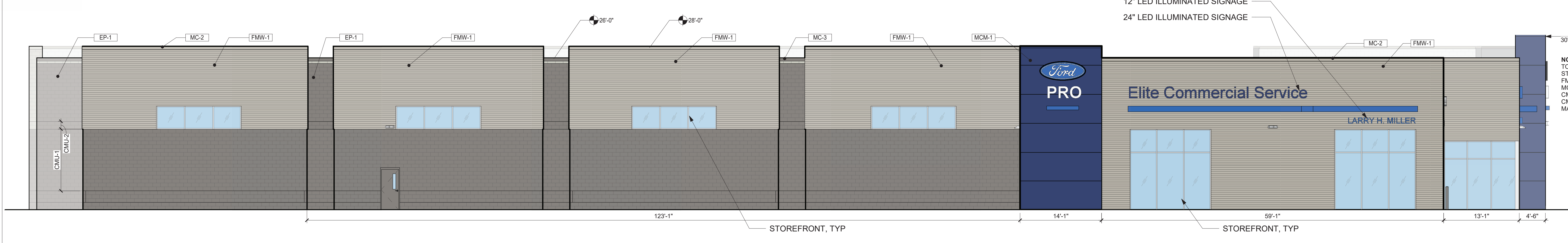
WEST FACADE MATERIAL CALCULATION
TOTAL AREA: 5,756 SF
STOREFRONT: 1,257 SF; 22%<50%
FMW-1: 1,435 SF; 25%<50%
MCM-1: 418 SF; 7%<50%
CMU-1: 390 SF; 7%<50%
CMU-2: 65 SF; 1%<50%
EIFS-1: 1,795 SF; 31%<60%
FULLY GLAZED DOORS: 336 SF; 6%<50%



SOUTH FACADE MATERIAL CALCULATION
TOTAL AREA: 7,208 SF
CMU-1: 3,351 SF; 59%<50%
CMU-2: 843 SF; 13%<50%
EIFS-1: 314 SF; 4%<50%
ALUMINUM OH DOORS: 1,848 SF; 27%<50%
MAN DOORS: 113 SF; 1%<50%



EAST FACADE MATERIAL CALCULATION
TOTAL AREA: 5,689 SF
STOREFRONT: 450 SF; 8%<50%
FMW-1: 1,104 SF; 19%<50%
MCM-1: 100 SF; 2%<50%
CMU-1: 2,862 SF; 51%<50%
CMU-2: 447 SF; 8%<50%
FULLY GLAZED DOORS: 332 SF; 9%<50%
COLLING DOOR: 100 SF; 2%<50%
MAN DOORS: 74 SF; 1%<50%



NORTH FACADE MATERIAL CALCULATION
TOTAL AREA: 7,190 SF
STOREFRONT: 784 SF; 11%<50%
FMW-1: 3,225 SF; 45%<50%
MCM-1: 544 SF; 7%<50%
CMU-1: 2,254 SF; 31%<50%
CMU-2: 359 SF; 5%<50%
MAN DOOR: 24 SF; <1%<50%

Client:
Asbury Automotive Group

2905 Premiere Parkway, Suite 300
Duluth, GA 30097

Project Number: 23085
Project Name:

Larry H. Miller Ford Pro-Elite

461 E Auto Center Dr
Mesa, AZ 85204

Key Plan:

Sheet Title:
Exterior Elevations

Sheet Number:

A400a





Ford
PRO

Elite Commercial Service

SERVICE

Elite Commercial Service

Ford
PRO

461