

1 WEST ELEVATION
3/32" = 1'-0"

GENERAL NOTES

A. COLOR AND MATERIAL SELECTIONS ARE SUBJECT TO CHANGE "TO SIMILAR" BASED ON PRICING AND AVAILABILITY.

KEYED NOTES

1. DECORATIVE ROLLING GATE TO SHROUD DELIVERY ACCESS.
2. MECHANICAL PENTHOUSE.
3. DECORATIVE SURFBOARD VALLET.
4. BALCONY PRIVACY SCREEN SYSTEM - WD-01. TYPICAL BETWEEN ROOMS.
5. PROPERTY BIKE STATION (AMENITY).
6. SURFBOARD LOCKERS.

% TOTAL PER MATERIAL THIS FACE = 12,357 SF
 CONC-01 = 5,042 SF (40.8%)
 WD-01 = 4,580 SF (37%)
 CONC-02 = 2,335 SF (18.8%)

MENDIL+MEYER
DESIGN STUDIO

15035 N. 73RD STREET, BUILDING D,
SCOTTSDALE, AZ 85260
480.389.2939 | info@mandmds.com | mandmds.com

NOT FOR CONSTRUCTION

| No. | Description | Date |
|-----|-------------|------|
|-----|-------------|------|

COLORS AND MATERIALS

- CONC-01 - E.I.F.S. SYSTEM
COLOR: ALABASTER OR SIMILAR
TEXTURE: SAND PEBBLE - BASED ON DRYVIT (OR SIMILAR)
- WD-01 - REALISTIC WOOD FINISH ALUMINUM
CLICK-ON BATTEN SYSTEM
COLOR: BASED ON SCULPTFORM AUSTRALIAN ASH (OR SIMILAR)
- WD-02 - REALISTIC WOOD FINISH ALUMINUM
SYSTEM
COLOR: MATCH WD-01
- CONC-02 - BOARDFORM CONCRETE
- CONC-03 - SMOOTH CONCRETE
- GL-01 - VITRO OPTIGRAY (OR SIMILAR)
- GL-02 - CLEAR GLASS RAILING SYSTEM
- STOREFRONT - DARK ANODIZED ALUMINUM
BASED ON ARCADIA AB-7 STANDARD DARK BRONZE (OR SIMILAR)

% TOTAL PER MATERIAL THIS FACE = 11,835 SF
 CONC-01 = 3,852 SF (32.6%)
 WD-01 = 1,860 SF (15.7%)
 CONC-02 = 1,585 SF (13.3%)
 GL-01 = 4,955 SF (41.8%)

Project
Cannon Beach Hotel

4503 S Power Rd Gilbert, AZ 85296

EXTERIOR ELEVATIONS

| | |
|----------------|-----------|
| Project Number | 2023_01 |
| Date | 5/12/2026 |
| Drawn By | RS |
| Checked By | BDM |

SD2.01

Scale As indicated



3 SOUTH ELEVATION
3/32" = 1'-0"



1 EAST ELEVATION
3/32" = 1'-0"

- GENERAL NOTES**
- A. COLOR AND MATERIAL SELECTIONS ARE SUBJECT TO CHANGE "TO SIMILAR" BASED ON PRICING AND AVAILABILITY.
- KEYED NOTES**
1. DECORATIVE ROLLING GATE TO SHROUD DELIVERY ACCESS.
 2. MECHANICAL PENTHOUSE.
 3. DECORATIVE SURFBOARD VALLET.
 4. BALCONY PRIVACY SCREEN SYSTEM - WD-01. TYPICAL BETWEEN ROOMS.
 5. PROPERTY BIKE STATION (AMENITY).
 6. SURFBOARD LOCKERS.

MENDIL+MEYER
DESIGN STUDIO

15035 N. 73RD STREET, BUILDING D,
SCOTTSDALE, AZ 85260

480.389.2939 | info@mandmds.com | mandmds.com

NOT FOR CONSTRUCTION

| No. | Description | Date |
|-----|-------------|------|
| | | |

COLORS AND MATERIALS

- CONC-01 - E.I.F.S. SYSTEM
COLOR: ALABASTER OR SIMILAR
TEXTURE: SAND PEBBLE - BASED ON DRYVIT (OR SIMILAR)
- WD-01 - REALISTIC WOOD FINISH ALUMINUM
CLICK-ON BATTEN SYSTEM
COLOR: BASED ON SCULPTFORM AUSTRALIAN ASH (OR SIMILAR)
- WD-02 - REALISTIC WOOD FINISH ALUMINUM
SYSTEM
COLOR: MATCH WD-01
- CONC-02 - BOARDFORM CONCRETE
- CONC-03 - SMOOTH CONCRETE
- GL-01 - VITRO OPTIGRAY (OR SIMILAR)
- GL-02 - CLEAR GLASS RAILING SYSTEM
- STOREFRONT - DARK ANODIZED ALUMINUM
BASED ON ARCADIA AB-7 STANDARD DARK BRONZE (OR SIMILAR)

Project
Cannon Beach Hotel

4503 S Power Rd Gilbert, AZ 85296

EXTERIOR ELEVATIONS

| | |
|----------------|-----------|
| Project Number | 2023_01 |
| Date | 5/12/2026 |
| Drawn By | Author |
| Checked By | Checker |

SD2.02

Scale As indicated



2 NORTH ELEVATION
3/32" = 1'-0"

MENDIL+MEYER

DESIGN STUDIO

15035 N. 73RD STREET, BUILDING D,
SCOTTSDALE, AZ 85260

480.389.2939 : info@mandmds.com : mandmds.com

NOT FOR CONSTRUCTION

| No. | Description | Date |
|-----|-------------|------|
|-----|-------------|------|

Project

Cannon Beach Hotel

4503 S Power Rd Gilbert, AZ 85296

BUILDING SECTIONS

Project Number 2023_01

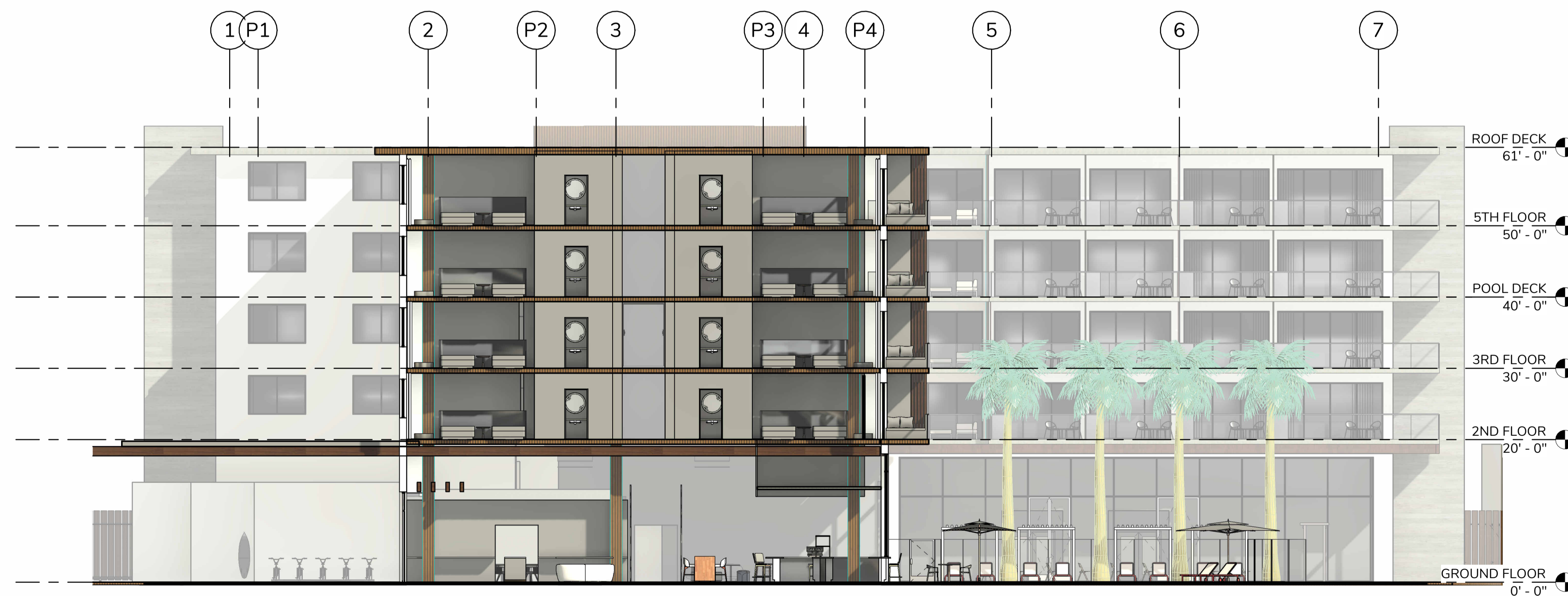
Date 5/12/2026

Drawn By RS

Checked By BDM

SD3.00

Scale 3/32" = 1'-0"



1 SECTION / ELEVATION AT BRIDGE
3/32" = 1'-0"



MENDIL+MEYER
DESIGN STUDIO

15035 N. 73RD STREET, BUILDING D,
SCOTTSDALE, AZ 85260

480.389.2939 : info@mandmds.com : mandmds.com

NOT FOR CONSTRUCTION

| No. | Description | Date |
|-----|-------------|------|
|-----|-------------|------|

Project
Cannon Beach Hotel

4503 S Power Rd Gilbert, AZ 85296

**PRELIMINARY 3D
VIEWS**

| | |
|----------------|-----------|
| Project Number | 2023_01 |
| Date | 5/12/2026 |
| Drawn By | LW |
| Checked By | BDM |

SD7.00.

Scale



MENDIL+MEYER
DESIGN STUDIO

15035 N. 73RD STREET, BUILDING D,
SCOTTSDALE, AZ 85260

480.389.2939 : info@mandmds.com : mandmds.com

NOT FOR CONSTRUCTION

| No. | Description | Date |
|-----|-------------|------|
|-----|-------------|------|

Project
Cannon Beach Hotel

4503 S Power Rd Gilbert, AZ 85296

3D VIEW 2

| | |
|----------------|-----------|
| Project Number | 2023_01 |
| Date | 5/12/2026 |
| Drawn By | RS |
| Checked By | BDM |

SD7.01

Scale



MENDIL+MEYER
DESIGN STUDIO

15035 N. 73RD STREET, BUILDING D,
SCOTTSDALE, AZ 85260

480.389.2939 : info@mandm.com : mandm.com

NOT FOR CONSTRUCTION

| No. | Description | Date |
|-----|-------------|------|
|-----|-------------|------|

Project
Cannon Beach Hotel

4503 S Power Rd Gilbert, AZ 85296

3D VIEW 3

| | |
|----------------|-----------|
| Project Number | 2023_01 |
| Date | 5/12/2026 |
| Drawn By | RS |
| Checked By | BDM |

SD7.02

Scale



MENDIL+MEYER
DESIGN STUDIO

15035 N. 73RD STREET, BUILDING D,
SCOTTSDALE, AZ 85260

480.389.2939 : info@mandmds.com : mandmds.com

NOT FOR CONSTRUCTION

| No. | Description | Date |
|-----|-------------|------|
|-----|-------------|------|

Project
Cannon Beach Hotel

4503 S Power Rd Gilbert, AZ 85296

3D VIEW 4

| | |
|----------------|-----------|
| Project Number | 2023_01 |
| Date | 5/12/2026 |
| Drawn By | RS |
| Checked By | BDM |

SD7.03

Scale