



# Design Review Board



# DRB24-00484

## Fire Station 224

Josh Grandlienard, Senior Planner

July 9, 2024



# Request

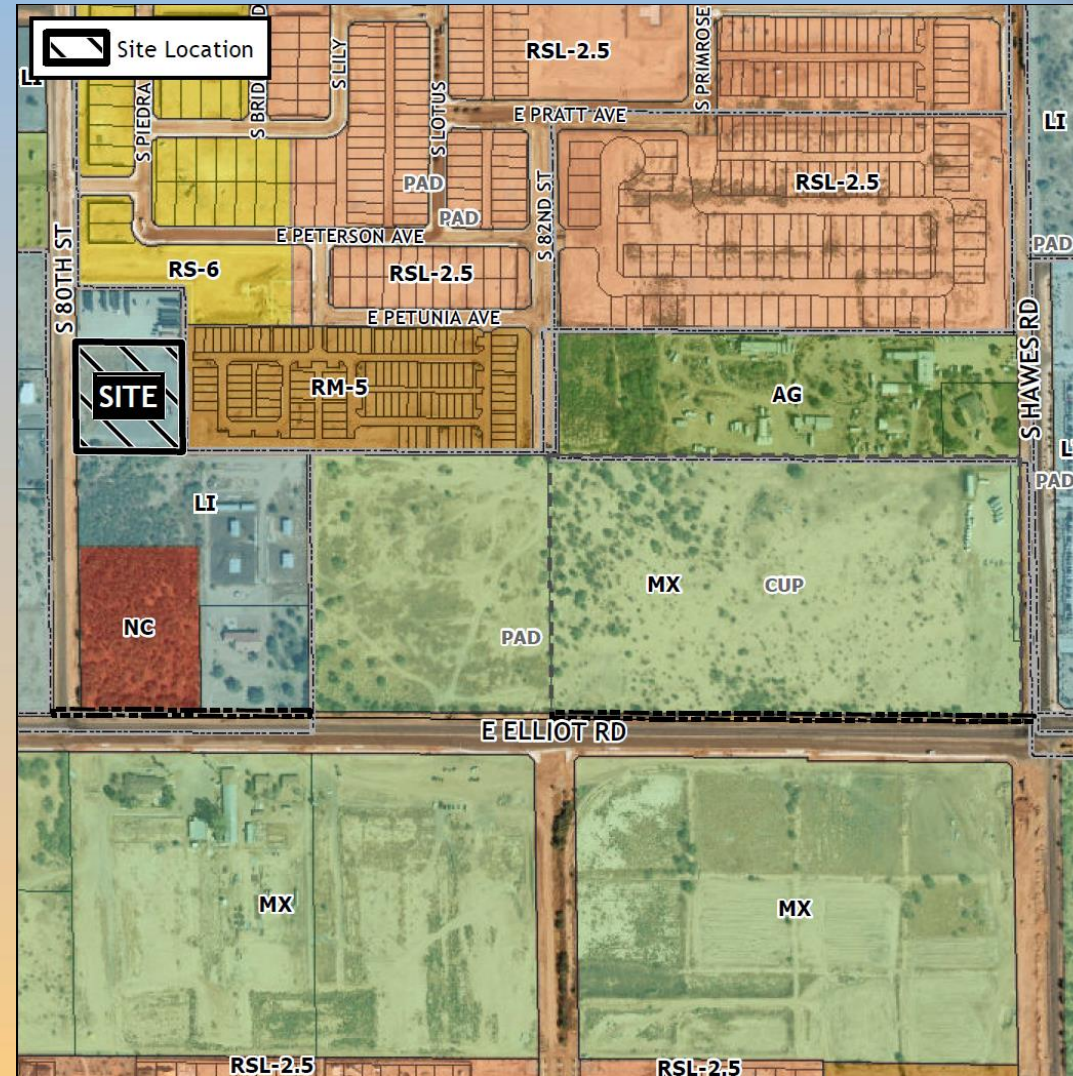
- Design Review
- To allow for a new Fire Station





# Location

- West of Hawes Road
- North of Elliot Road
- East of 80<sup>th</sup> Street





# Site Photo

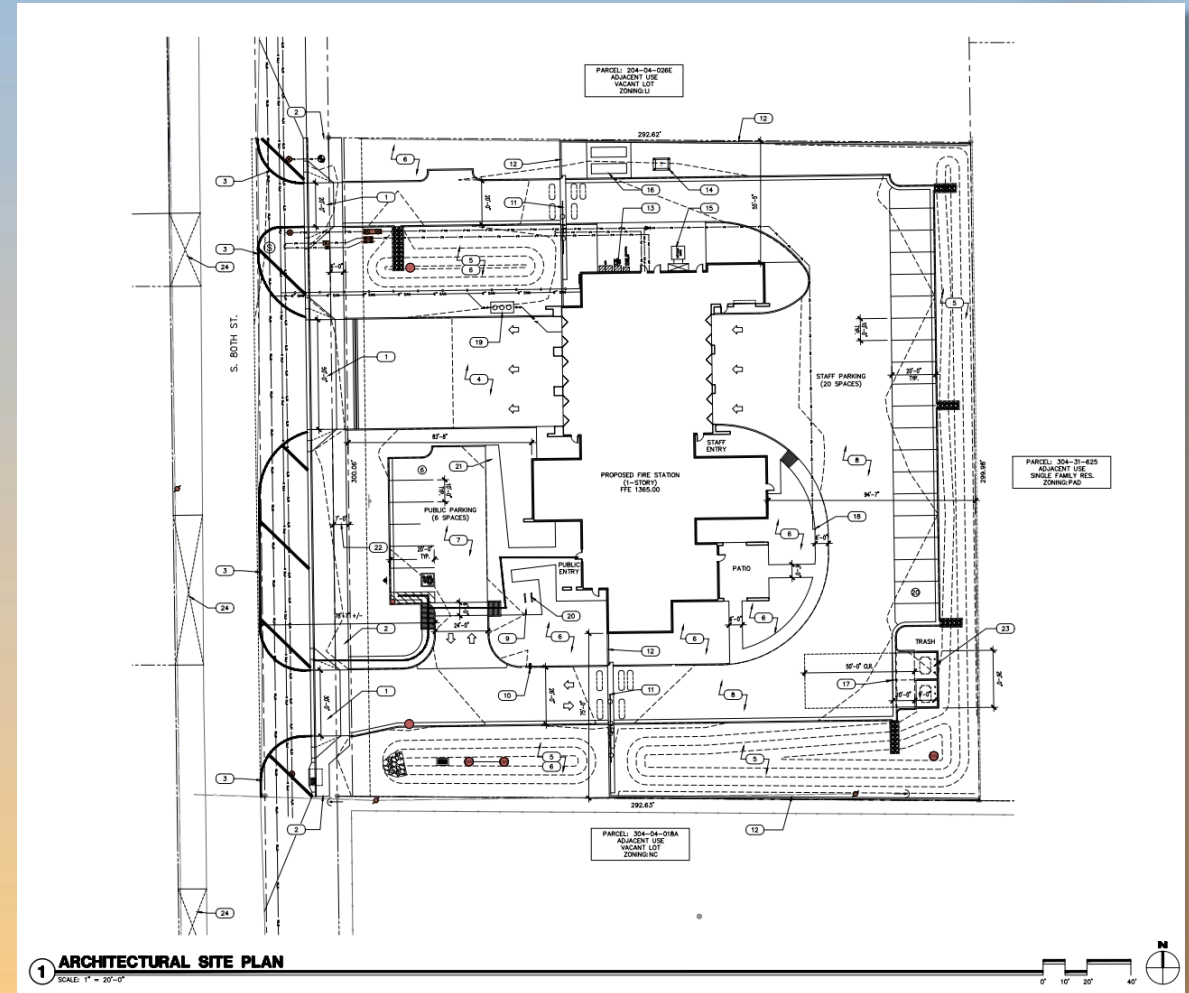


Looking east from 80<sup>th</sup> Street



# Site Plan

- Fire Station with 3 bay doors
- Vehicular access to the site is provided from S 80<sup>th</sup> Street
- 26 parking spaces provided

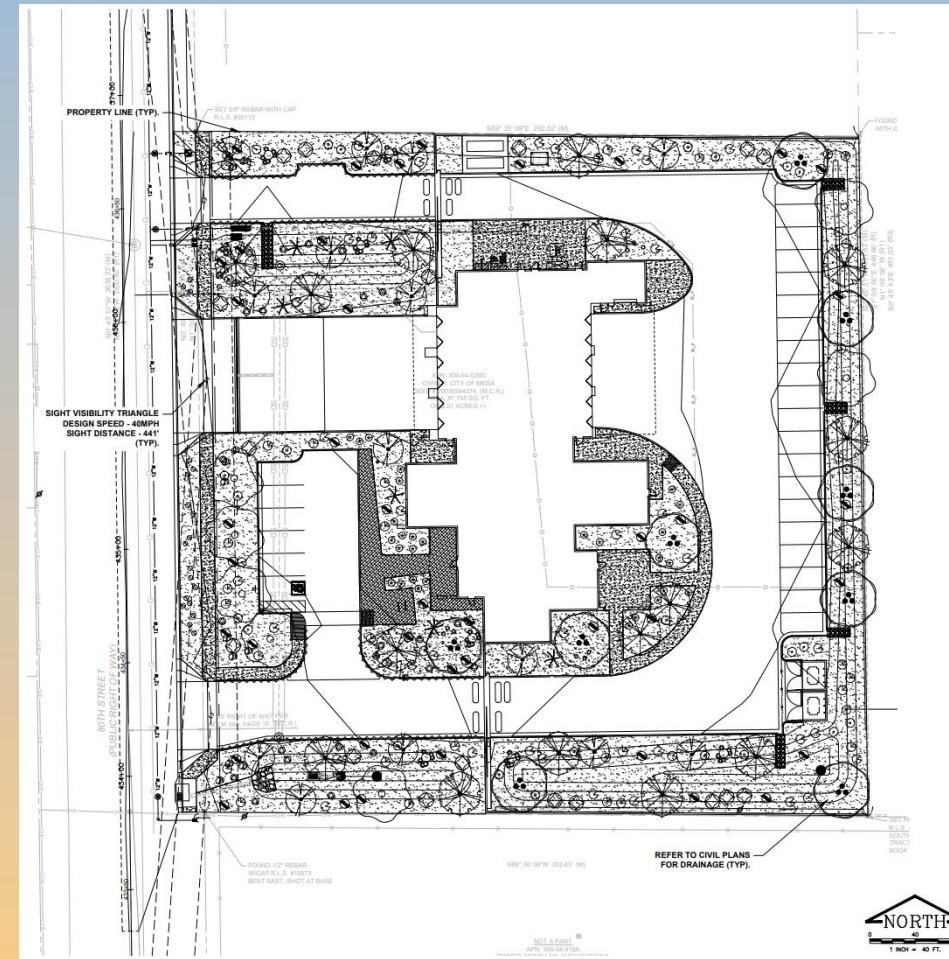




# Landscape Plan

## LANDSCAPE SCHEDULE

SYMBOL	BOTANICAL NAME	COMMON NAME	CONT.	GAL.	QTY.
<b>TREES</b>					
	CAESALPINIA CALALACO 'SMOOTHIE' TM	SMOOTHIE CASCALOTE	24"BOX	1.5" CAL.	13
	CHILOPSIS LINEARIS	DESERT WILLOW	24"BOX	1.5" CAL.	17
	OLNEYA TESOTA	IRONWOOD	24"BOX	MULTI-TRUNK	9
	PARKINSONIA PRAECOX	PALO BREA	24"BOX	1.5" CAL.	7
<b>SHRUBS</b>					
	AMBROSIA DELTOIDEA	TRIANGLELEAF BURSAGE	5 GAL		25
	DALEA PULCHRA	BUSH DALEA	5 GAL		13
	ENCELIA FARINOSA	BRITTLEBUSH	5 GAL		41
	EREMOPHILA HYGROPHANA	EMU BUSH	5 GAL		18
	ERICAMERIA LARICIFOLIA	TURPENTINE BUSH	5 GAL		29
	LARREA TRIDENTATA	CREOSOTE BUSH	5 GAL		18
	SPHAERALCEA AMBIGUA	GLOBEMALLOW	5 GAL		41
<b>ACCENTS</b>					
	FEROCACTUS CYLINDRACEUS	COMPASS BARREL	5 GAL		9
	FOUQUIERIA SPLENDENS	OCOTILLO	8-10 CANES		6
	HESPERALOE PARVIFLORA 'BRAKELIGHTS' TM	BRAKELIGHTS RED HESPERALOE	5 GAL		29
	OPUNTIA ENGELMANNII	ENGELMANN'S PRICKLY PEAR	5 GAL		7
<b>GROUNDCOVERS</b>					
	GLANDULARIA GOODINGII	GOODING'S VERBENA	1 GAL		22
<b>INERT MATERIALS</b>					
	DECOMPOSED GRANITE MADISON DESERT GOLD				32,538 SF.
	SURFACE SELECT BOULDER PER DETAIL X LS300				18 EA.





# Building Elevations



--- T.O. MASONRY 20'-8"

--- T.O. MASONRY 22'-0"

--- FINISH FLOOR 0'-0"

3 EXTERIOR ELEVATION - WEST  
1" = 10'-0"



--- T.O. MASONRY 26'-8"

--- T.O. MASONRY 22'-0"

--- B.O. WINDOW HEADER 8'-8"

--- FINISH FLOOR 0'-0"

4 EXTERIOR ELEVATION - NORTH  
1" = 10'-0"





# Building Elevations



① EXTERIOR ELEVATION - EAST  
1" = 10'-0"



② EXTERIOR ELEVATION - SOUTH  
1" = 10'-0"



# Site Rendering





# Site Rendering





# Site Rendering





# Site Rendering





# Colors and Materials

**Material Legend**

1	M1	METAL ROOFING MANF: ATAS COLOR: 02 BLACK
2	M2	CONCRETE MASONRY UNIT - TRENDSTONE MANF: SUPERLITE COLOR: OPAL
3	M3	CONCRETE MASONRY UNIT - MESASTONE MANF: SUPERLITE COLOR: PEBBLE BEACH
4	M4	METAL CLADDING MANF: ATAS COLOR: 62 CHARCOAL GREY
5	M5	DOOR/WINDOW FRAME MANF: ARCADIA COLOR: CLEAR
6	M6	APPARATUS BAY DOORS MANF: TIGER DRYLAP POWDER COATINGS COLOR: SILVER TO MATCH ALUMINUM
7	M7	GLAZING MANF: PPG COLOR: SOLARBAN 70 SOLARGRAY

M1      M2      M3      M4

M5      M6      M7

FS  
224



# Alternative Compliance

- ✓ Materials. Facades shall incorporate at least 3 different materials
- ✓ Materials. No more than 50% of the façade may be covered with one single material



# Findings

Staff is seeking your approval on the following:

- ✓ Proposed building elevations and landscape design
- ✓ Alternative Compliance for building materials

*Staff recommends Approval with Conditions*





# Design Review Board