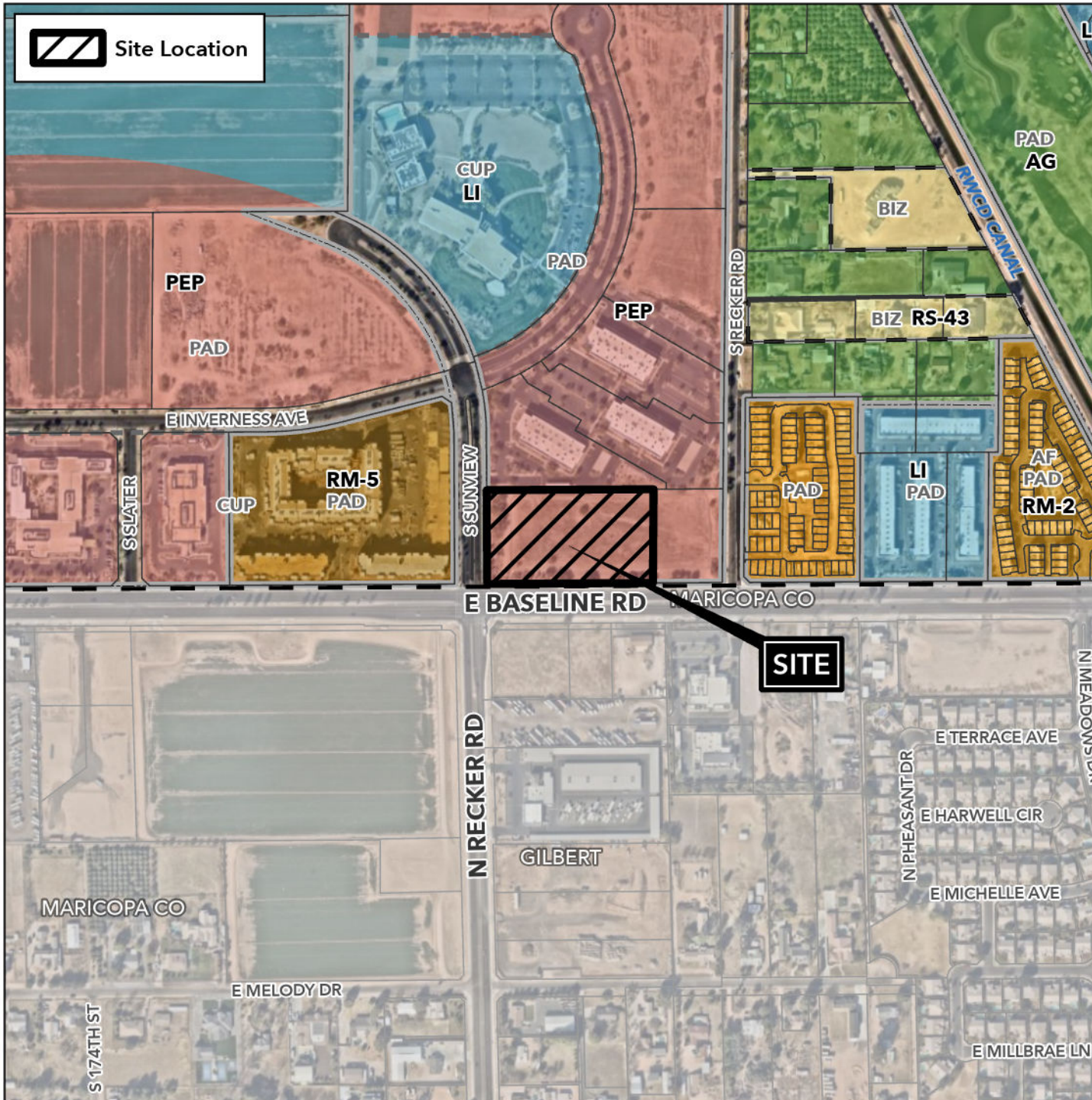


Board of Adjustment Vicinity Map: BOA25-00217

Case Details



Site Location



Case:

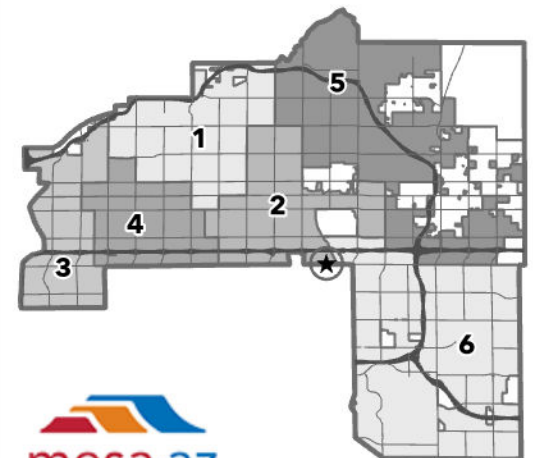
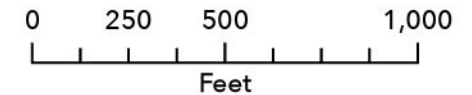
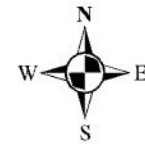
BOA25-00217

Site / Address:

4.1 ± acres located at the northeast corner of South Sunview and East Baseline Road. (District 2)

Request:

Requesting a Special Use Permit (SUP) for a modification to a Comprehensive Sign Plan (CSP).



mesa·az