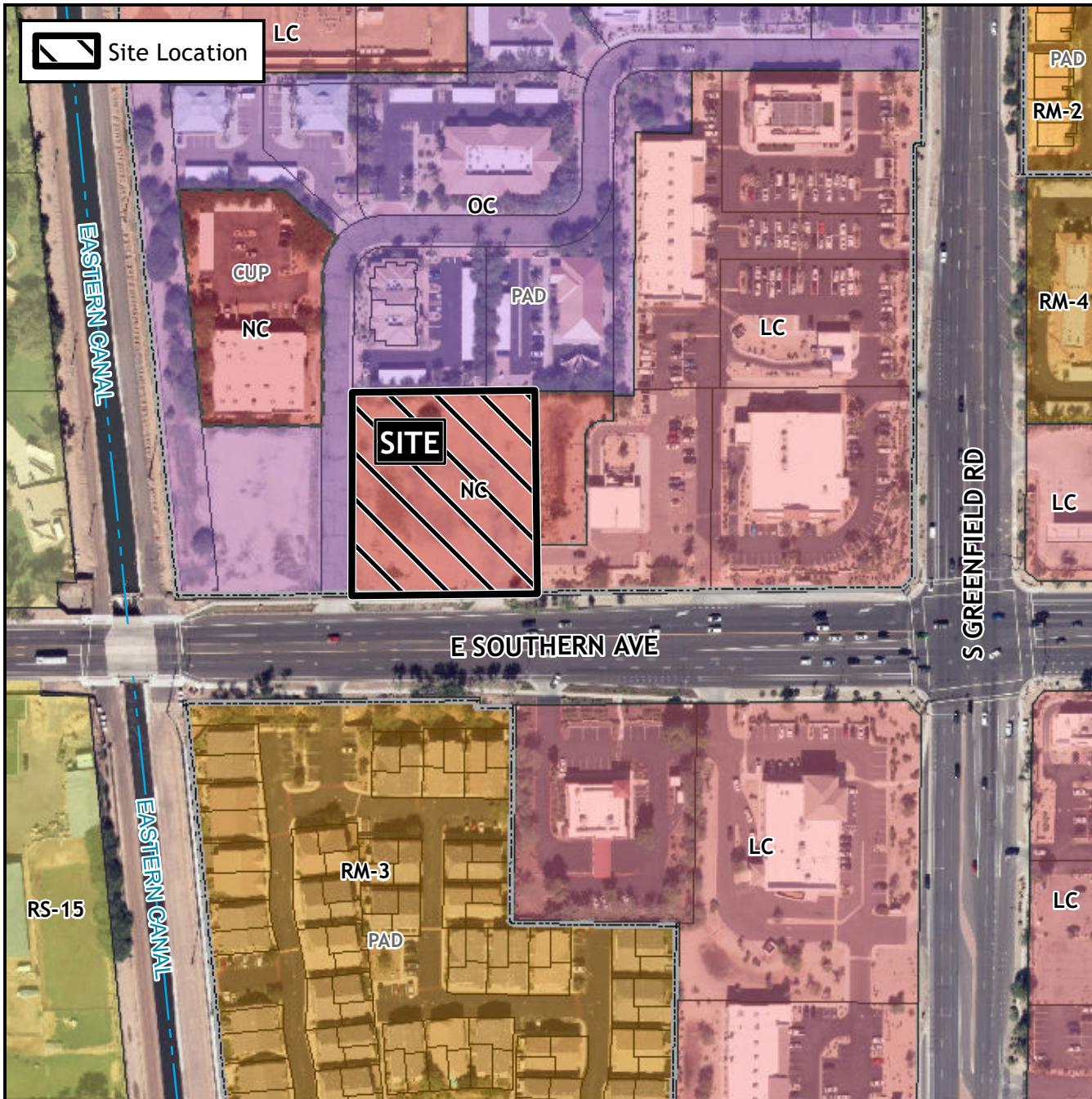


# Planning and Zoning Vicinity Map: ZON22-00610

## Case Details



### CASE:

ZON22-00610

### SITE / ADDRESS:

(District 2). Within the 4200 to 4400 blocks of East Southern Avenue (north side) and within the 1100 block of South Oakland (east side). Located west of Greenfield Road on the north side of Southern Avenue. (1.4± acres).

### REQUEST:

Rezone from Neighborhood Commercial with a Planned Area Development overlay (NC-PAD) to Limited Commercial with a Planned Area Development and Bonus Intensity Zone overlay (LC-PAD-BIZ) and Site Plan Review. This request will allow for a commercial development.

