

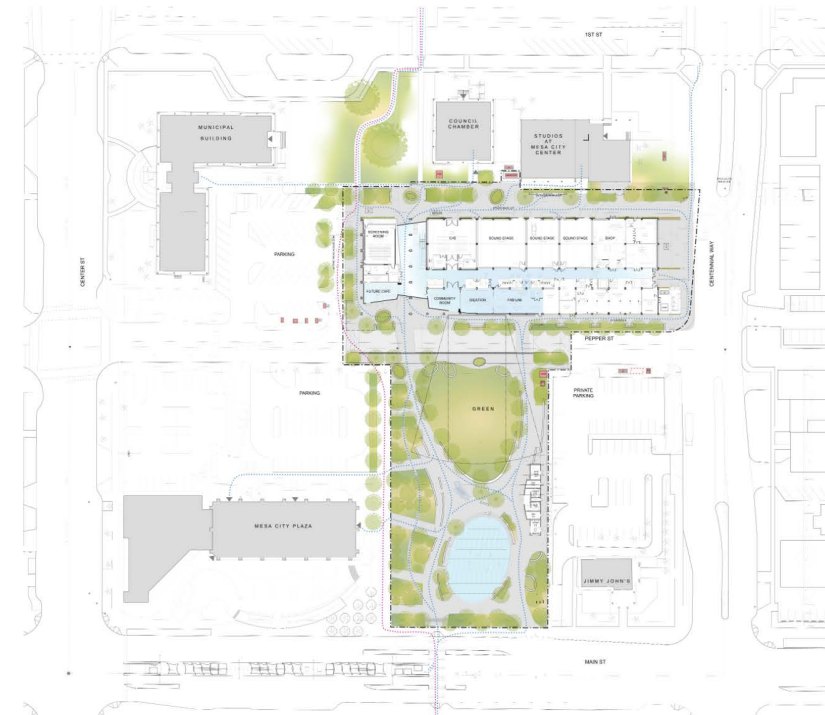
**MESA CITY CENTER**  
*MESA CITY CENTER PROJECT UPDATE  
AND GMP #1 (INFRASTRUCTURE)*

City Council  
Study Session

October 31, 2019

# MESA CITY CENTER UPDATE

- ASU @ Mesa City Center
- The Plaza @ Mesa City Center
- The Studios @ Mesa City Center
- Mesa City Center - GMP No. 1 – Infrastructure Improvements

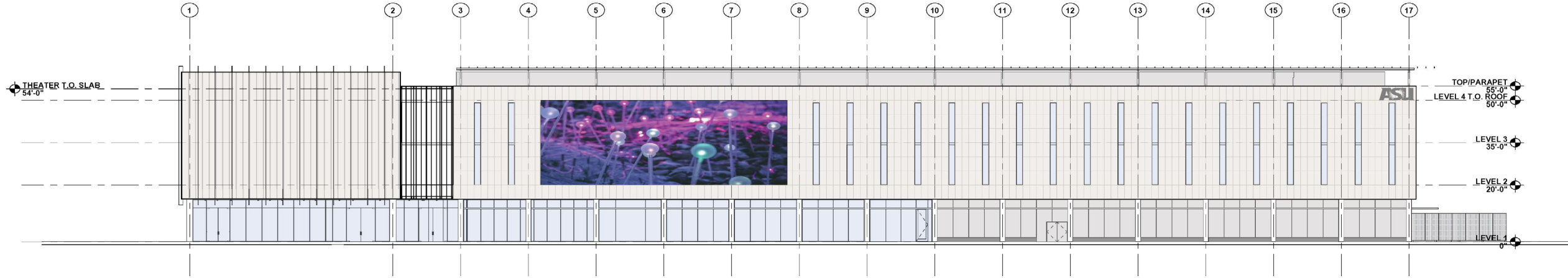


Bohlin Cywinski Jackson  
Architecture Planning Interior Design

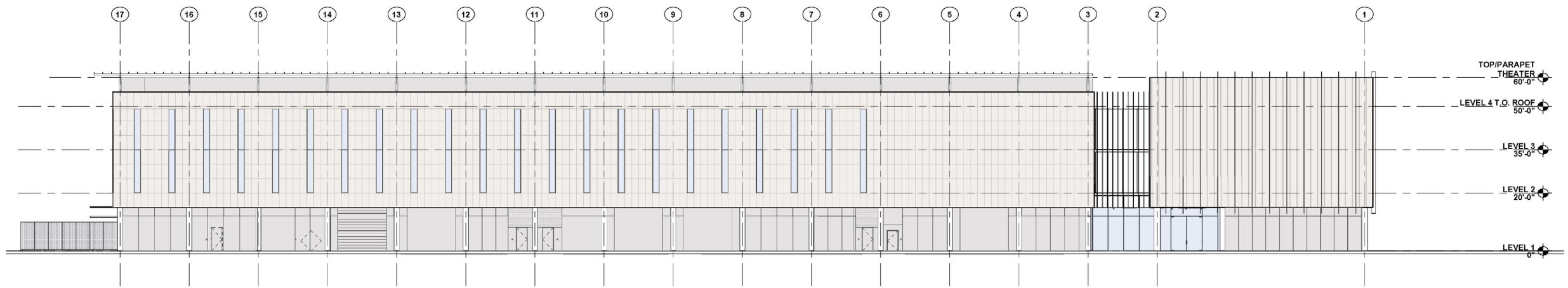
URBAN CONTEXT

ASU + The Plaza at Mesa City Center

**ASU @ MESA CITY CENTER**



**South Elevation**



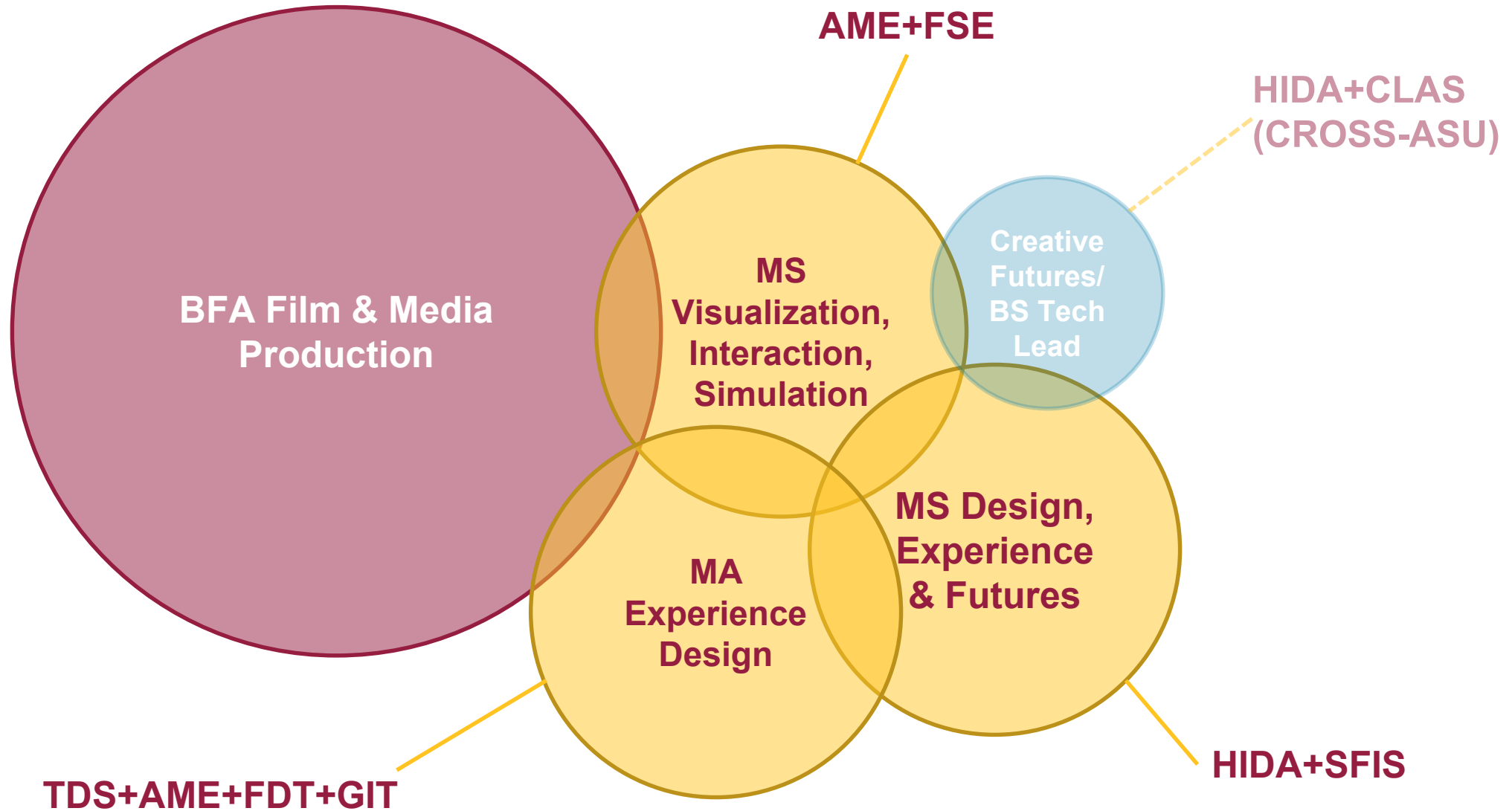
**North Elevation**

# Placeholder for Academic Programming Video

# Mission

To create a world-class center at the leading edge of media technologies and practices that brings students, faculty, community and industry together to design, visualize and explore **transformative, imaginative futures.**

# Curricular Programs



# **Community Engagement**



**Collaborative projects**

**Special events/festivals**

**Youth/continuing education**

**Frequent movie screenings**

**Community space use**

**Venture  
incubation/collaboration**

**Immersive experiences**



# Public Spaces



**Screenings/movie theatres**

**Café**

**Exhibition/gallery**

**Performances**

**Collaboration/Ideation**

**Community Meeting/Education**

**Special Events**

# Engagement

## Industry

Venture development  
Reverse internships  
Corporate sabbaticals  
Sponsored projects  
Consortium laboratory  
FilmSpark/LA connection  
Facility use  
Creative Agency

## Community

Public events  
Community futuring  
Mesa Arts Center  
Natural History Museum  
i.d.e.a. museum  
Mesa Public Schools  
eSports  
Workshops/camps  
EPICS, DAC, NGSC, PSA

## Academy

Cross-university programs  
BS in Tech Leadership  
E+I  
MCCCD/Mesa CC  
EPICS  
Next Gen Service Corps  
Design and Arts Corps  
PLUS Alliance  
University networks

**How do we ensure  
curriculum, research and  
engagement are  
fundamentally integrated?**

# Example Collaborations

[Hypothetical...for now]

**ASU, Mesa Public Schools, LivitLabs and Oculus:  
Laboratory for VR Education**

**Boeing, ASU, Maricopa Community Colleges, NAU and the City of Mesa:  
XR Training for Emergency Response and Preparedness**

**ASU, Intel, RAILMesa, and Mesa Arts Center:  
Smart Art – Aesthetic Sensor Tech**

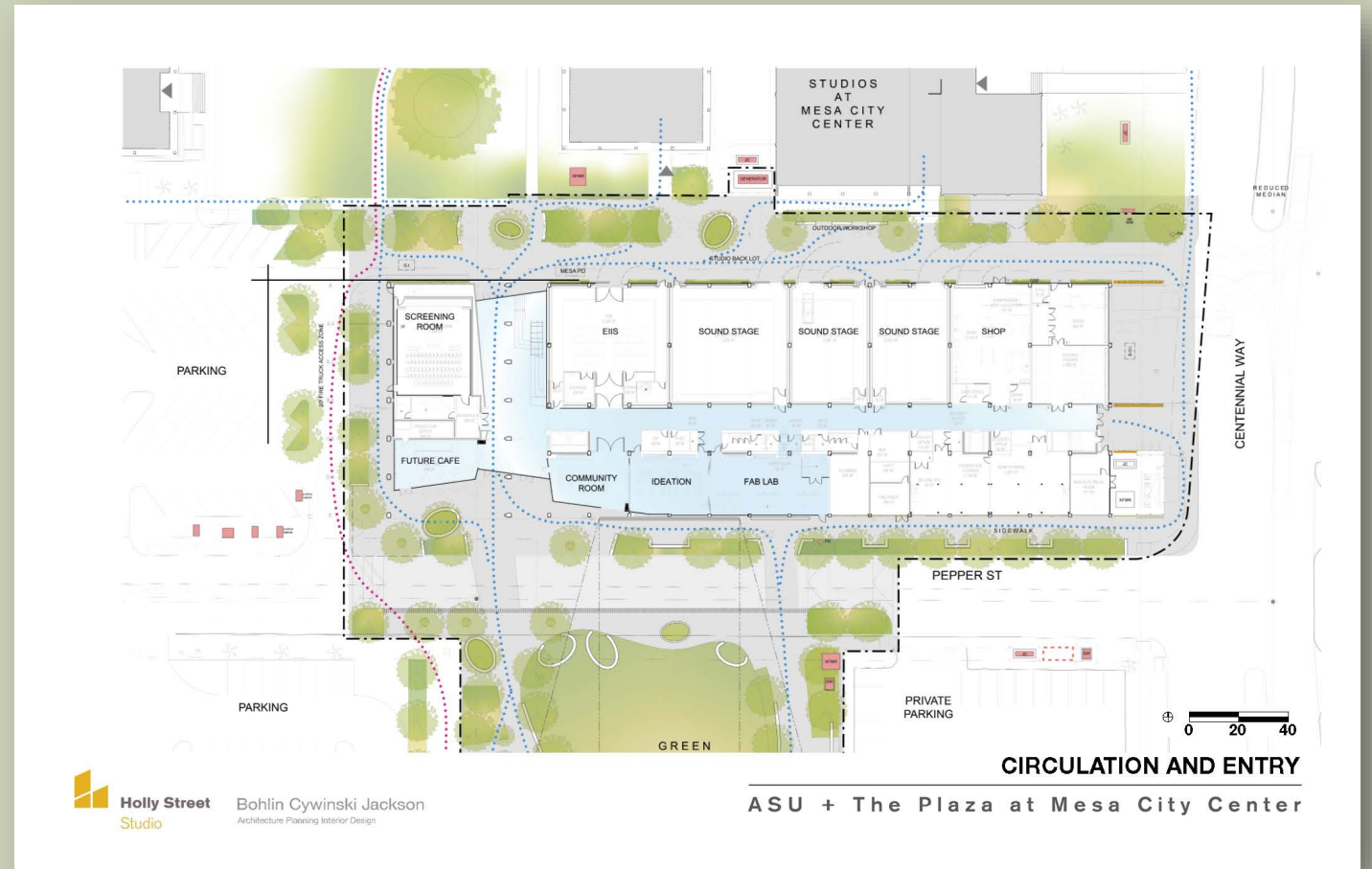


**Thank you.**

# ASU @ MESA CITY CENTER UPDATE

## Timeline Update

- Mid-November: ASU building final design complete
- February 2020: ASU construction start
- October 2021: ASU building construction complete
- January 2022: ASU classes begin



# ASU @ MESA CITY CENTER UPDATE

## ***Budget Update***

- \$73.5M: ASU building budget
  - \$63.5M: City commitment
  - \$10M: ASU commitment
- ASU FF&E commitment: min. \$10M
- \$2.4M: Supporting infrastructure budget



View From Plaza

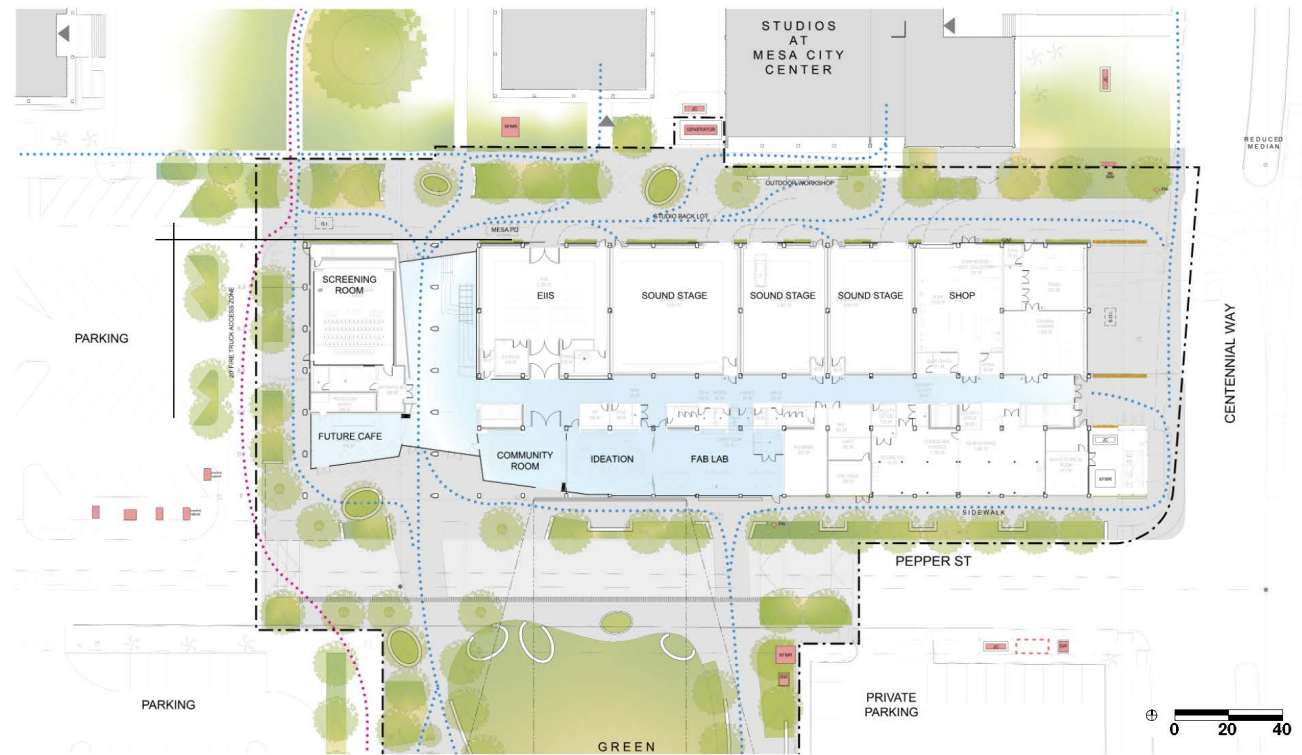
# ASU @ MESA CITY CENTER UPDATE



**BUILDING BLOCKS DIAGRAM**

**Holly Street Studio** Bohlin Cywinski Jackson  
Architecture Planning Interior Design

ASU + The Plaza at Mesa City Center



**CIRCULATION AND ENTRY**

**Holly Street Studio** Bohlin Cywinski Jackson  
Architecture Planning Interior Design

ASU + The Plaza at Mesa City Center



# ASU @ MESA CITY CENTER UPDATE



**View From Promenade**



**Holly Street**

Studio

**Bohlin Cywinski Jackson**

Architecture Planning Interior Design

**ASU + The Plaza at Mesa City Center**

# ASU @ MESA CITY CENTER UPDATE



**View Along Pepper Place**



**Holly Street**

Studio

**Bohlin Cywinski Jackson**

Architecture Planning Interior Design

**ASU + The Plaza at Mesa City Center**

# ASU @ MESA CITY CENTER UPDATE



**View of Cafe and Lobby**

**ASU + The Plaza at Mesa City Center**

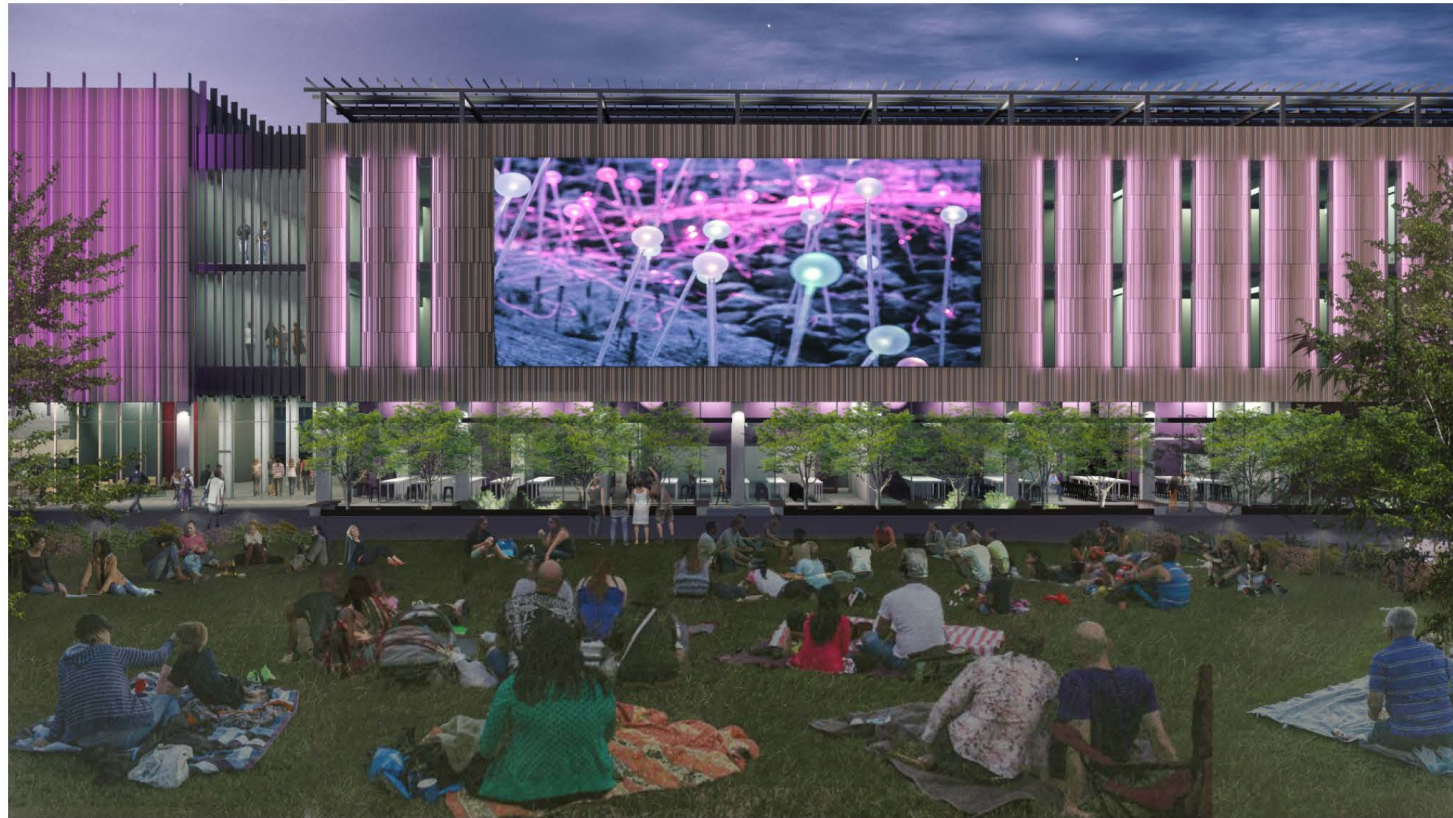


**Bohlin Cywinski Jackson**  
Architecture Planning Interior Design

# ASU @ MESA CITY CENTER UPDATE



# ASU @ MESA CITY CENTER UPDATE



**View From Lawn**



Holly Street

Studio

Bohlin Cywinski Jackson

Architecture Planning Interior Design

ASU + The Plaza at Mesa City Center

**PLAZA @ MESA CITY CENTER**

# PLAZA @ MESA CITY CENTER UPDATE

## ***Timeline***

- Spring 2020: Plaza final design
- Winter 2021: Plaza construction starts
- November 2022: Plaza construction complete

## ***Budget***

- \$8.05M: Plaza budget
- \$940K: Supporting infrastructure budget



# PLAZA @ MESA CITY CENTER UPDATE





**STUDIOS @ MESA CITY CENTER**

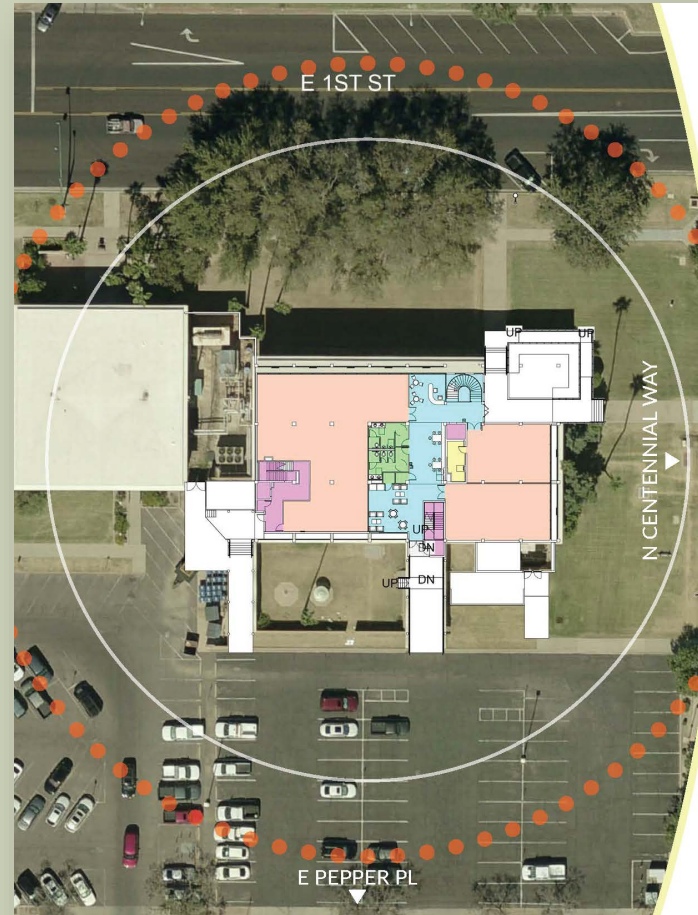
# STUDIOS @ MESA CITY CENTER UPDATE

## Timeline

- November 2019: Design commence
- Spring 2020: CMAR selection
- Summer 2020: Final design complete
- Fall/Winter 2020: Commence construction
- Fall/Winter 2021: Complete construction

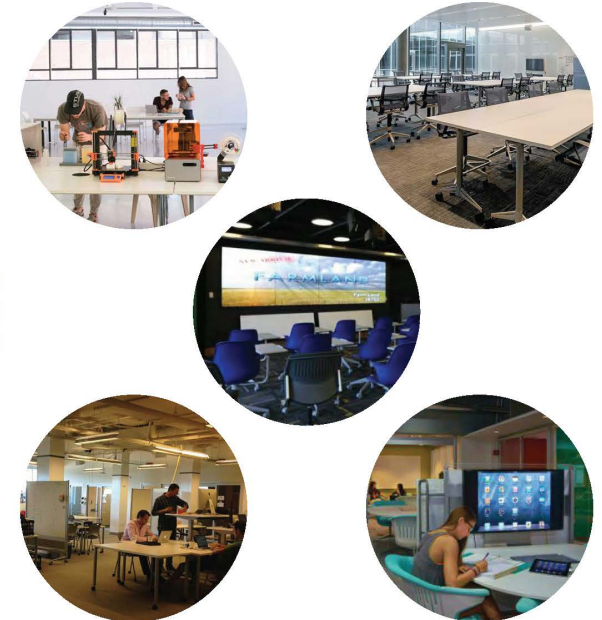
## Budget

- \$8M: Studios building budget  
(potential phasing to be determined during design)
- \$270K: Supporting infrastructure budget



## SITE PLAN

Conceptual Images



City of Mesa, Arizona - IT Building Adaptive Reuse

# GMP #1 SITE INFRASTRUCTURE

# GMP NO. 1 CITY CENTER INFRASTRUCTURE

## Additional Infrastructure Improvements

- \$1.7M: System and reliability upgrades
    - \$1.5M: Electric
    - \$190K: Communications (fiber)
  - \$30K: Future development
  - \$25K: Street resurfacing
  - \$210K: Public Safety (approved bonds)
- 
- \$1.95M: Total Additional Infrastructure

