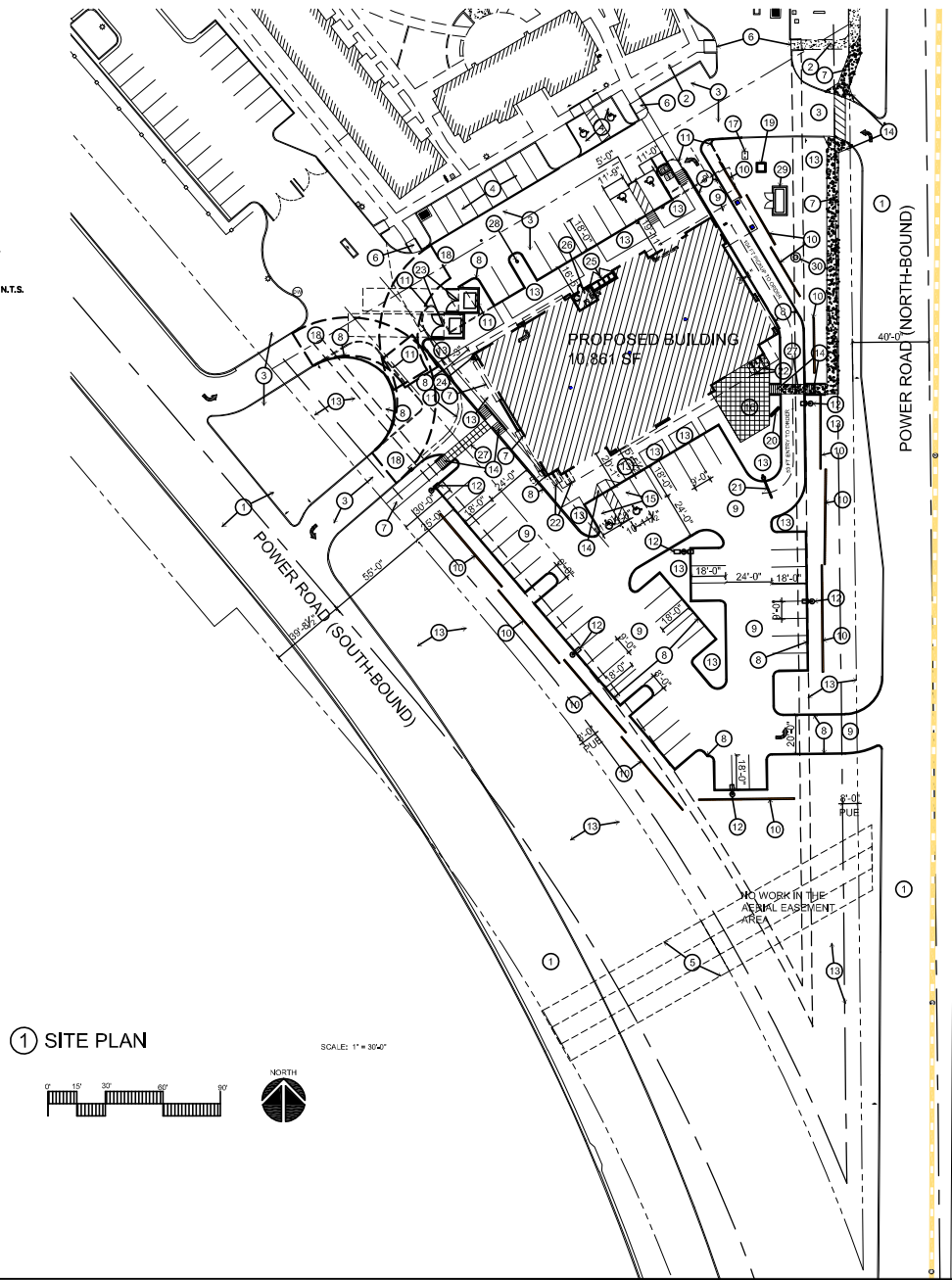


② VICINITY PLAN

N.T.S.



① SITE PLAN



SCALE: 1" = 30'0"

SITE DATA

BUILDING SIZE: 10,881 SF
 BUILDING HEIGHT: 25'4"
 RESTAURANT AREA: 2,892 SF INDOOR
 900 SF OUTDOOR
 RETAIL AREA: 8,169 SF
 PARKING REQUIRED:
 RESTAURANT: 1 SPACE PER 100 SF OF INDOOR PLUS 1 SPACE PER 200 SF OF OUTDOOR AREA
 RETAIL: 1 SPACE PER 375 SF
 RESTAURANT: 2,892 / 100 = 27 SPACES
 900 / 200 = 5 SPACES
 RETAIL: 8,169 / 375 = 22 SPACES
 TOTAL PARKING REQUIRED: 54 SPACES
 TOTAL PARKING PROVIDED: 61 SPACES
 BICYCLE PARKING REQUIRED: 1 SPACE PER 10 VEHICLE SPACES
 61 / 10 = 7 BIKE PARKING REQUIRED
 6 BIKE PARKING SPACES PROVIDED

KEYNOTES

- 1 EXISTING STREET
- 2 EXISTING SIDEWALK
- 3 EXISTING DRIVE TO REMAIN
- 4 EXISTING PARKING TO REMAIN
- 5 OVERHEAD ELECTRICAL EASEMENT
- 6 EXISTING ADA RAMP TO REMAIN
- 7 NEW CONCRETE SIDEWALK, 5'-0" WIDE MIN.
- 8 8" HIGH CONCRETE CURB
- 9 ASPHALT PAVING
- 10 3'-4" TALL CMU SCREEN WALL
- 11 REMOVE EXISTING CURBING AS REQUIRED
- 12 PARKING LOT LIGHT FIXTURE
- 13 LANDSCAPED AREA
- 14 NEW ADA RAMP
- 15 ADA PARKING AND STORAGE
- 16 CONCRETE PAVEMENT AREA
- 17 GREASE INTERCEPTOR LOCATION
- 18 FIRE TRUCK TURNING RADIUS, 30' INSIDE 50' OUTSIDE
- 19 PROPOSED ELECTRICAL TRANSFORMER ON 6" CONCRETE PAD
- 20 MENU BOARD
- 21 CLEARANCE BAR
- 22 BIKE RACK, SEE DETAIL
- 23 TRASH ENCLOSURE PER LOCAL REQUIREMENTS
- 24 FIRE DEPARTMENT CONNECTION (FDC)
- 25 S.E.S. (ELECTRICAL GEAR) WITH FULL WIDTH 6" HIGH STEEL GATES
- 26 FIRE RISER
- 27 CONCRETE CROSSWALK, 30' X 30' SAW CUT JOINTS, GREY CONCRETE, HEAVY BROOM FINISH CROSSWALK TO BE RAISED 3" ABOVE SURROUNDING ASPHALT
- 28 EXISTING FIRE HYDRANT
- 29 EMERGENCY GENERATOR FOR FORCE MAIN PUMP ON 12" CONCRETE PAD, WITH 6" HIGH MASONRY SCREEN WALLS AND PR 4" WIDE STEEL GATES
- 30 LIFT STATION



**CABANA ON POWER ROAD -
 RETAIL CENTER**
 6209 S. POWER ROAD
 MESA, AZ 85212

PROJECT NUMBER: 2468810-01
 PROJECT MANAGER: MDM
 DRAWN BY: MDM
 CHECKED BY: JP

SHEET DESCRIPTION
 SITE PLAN



SHEET NO.
A100
 ISSUE DATE: 24.10.22

FINAL

ZON22-01264