



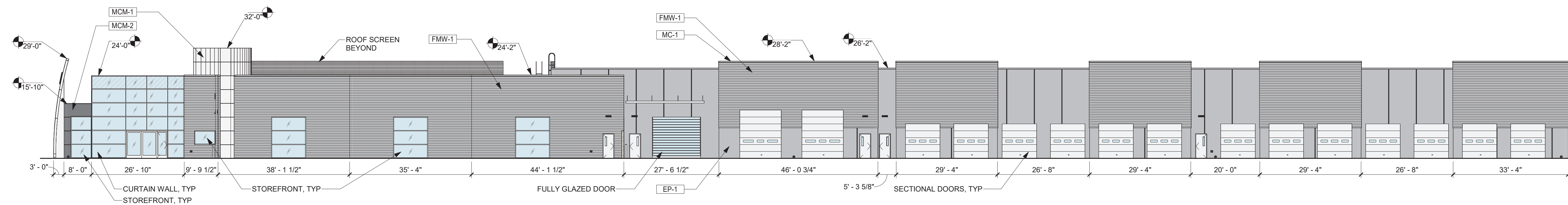
Copyright © 2023 Praxis, LLC
 All reports, plans, specifications, computer files, field data, notes and other documents and instruments prepared by Praxis3 and its affiliates are the property of Praxis3 and its affiliates. No part of this document may be reproduced or transmitted in any form or by any means, electronic, mechanical, photocopying, recording, or by any information storage and retrieval system, without the prior written permission of Praxis3. It is to be returned upon request. Dates as stated are valid on the original drawing.

Rev	Date	Comments
	08.30.23	SD Set
	11.17.23	60% Set

EXTERIOR FINISH LEGEND

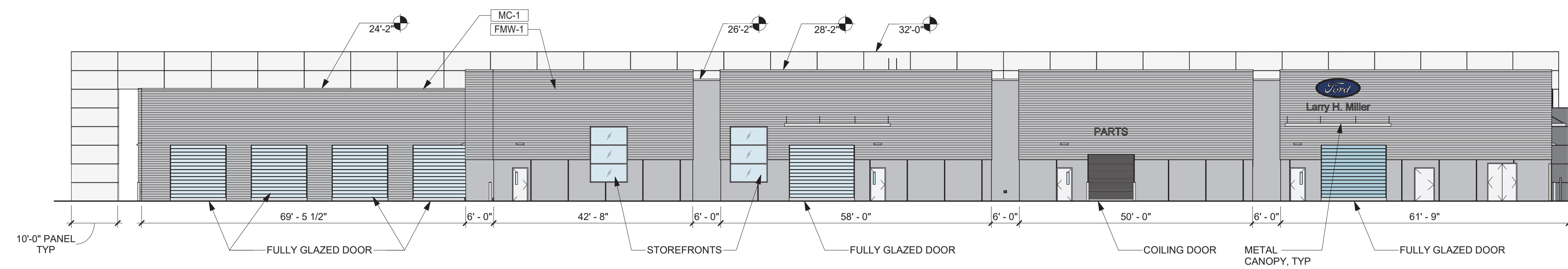
PANELS	CODE	MATERIAL	MANUFACTURER	COLOR	TYPE	REMARKS	CONTACT
PANELS	MCM-1	METAL COMPOSITE MATERIAL	ARCONIC	LONG BRUSHED ALUMINUM	RENOBOND COLORWELD LF	-	ALISA BOLLINGER P: 478-230-3600 E: alisa.bollinger@arconic.com
	MCM-2	METAL COMPOSITE MATERIAL	ARCONIC	PEWTER	RENOBOND COLORWELD 500	-	
	FMW-1	CORRUGATED METAL PANEL	ARCONIC	COLORWELD 500 - SLATE GREY (BNSA179B), 30% GLOSS	7/8" CORRUGATED SIDING	-	
MISC	EP-1	EXTERIOR PAINT	BENJAMIN MOORE	2132-70 MINERAL ICE	ULTRA SPEC EXTERIOR SATIN	SEE PAINT SCHEDULE	BETH MAGUIRE P: 847-372-1854 E: beth.maguire@benjaminmoore.com
	MC-1	METAL COPING	SEE SPEC	TO MATCH ADJACENT WALL	-	-	
	BO-1	BOLLARD	SEE SPEC	PAINT EP-1, UNO	-	-	

NOTES:
 1. PAINT EXTERIOR HOLLOW METAL DOORS, EP-1, UNO.
 2. PAINT ALUMINUM CANOPIES EP-1, UNO.



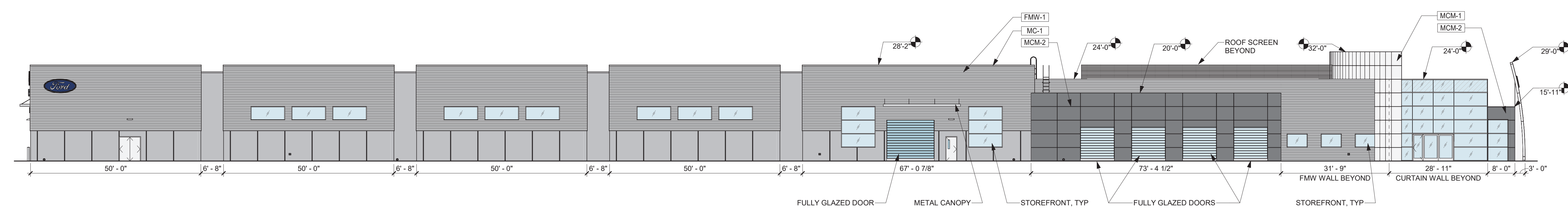
4 Exterior Elevation - East
 A400a 1/16" = 1'-0"

EAST FAÇADE MATERIAL CALCULATION:
 TOTAL AREA: 11,552 SF; 50% = 5,776 SF
 MCM-1: 286 SF; 3% < 50%
 MCM-2: 54 SF; 1% < 50%
 EP-1: 2,562 SF; 22% < 50%
 FMW-1: 5,627 SF; 49% < 50%
 CURTAIN WALL: 717 SF; 6% < 50%
 STOREFRONT: 384 SF; 3% < 50%
 OVERHEAD DOORS: 1,803 SF; 16% < 50%
 PERSONNEL DOORS: 119 SF; 1% < 50%
NOTE: EAST ELEVATION PARTIALLY OBSCURED BY SCREEN



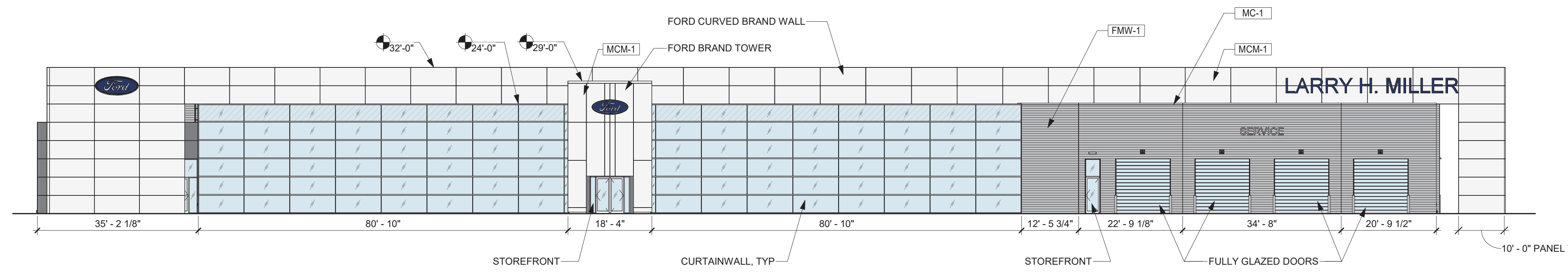
3 Exterior Elevation - North
 A400a 1/16" = 1'-0"

NORTH FAÇADE MATERIAL CALCULATION:
 TOTAL AREA: 10,056 SF; 50% = 5,028 SF
 MCM-1: 1,853 SF; 18% < 50%
 MCM-2: 74 SF; 1% < 50%
 FMW-1: 4,589 SF; 46% < 50%
 EP-1: 1,757 SF; 18% < 50%
 STOREFRONT: 192 SF; 2% < 50%
 OVERHEAD DOORS: 1,004 SF; 10% < 50%
 PERSONNEL DOORS: 178 SF; 2% < 50%
NOTE: NORTH ELEVATION PARTIALLY OBSCURED BY SCREEN



2 Exterior Elevation - West
 A400a 1/16" = 1'-0"

WEST FAÇADE MATERIAL CALCULATION:
 TOTAL AREA: 11,912 SF; 50% = 5,956 SF
 MCM-1: 416 SF; 3% < 50%
 MCM-2: 1,122 SF; 9% < 50%
 FMW-1: 5,548 SF; 47% < 50%
 EP-1: 2,760 SF; 23% < 50%
 CURTAIN WALL: 694 SF; 6% < 50%
 STOREFRONT: 745 SF; 6% < 50%
 OVERHEAD DOORS: 568 SF; 5% < 50%
 PERSONNEL DOORS: 69 SF; 1% < 50%



1 Exterior Elevation - South
 A400a 1/16" = 1'-0"

SOUTH FAÇADE MATERIAL CALCULATION:
 TOTAL AREA: 11,576 SF; 50% = 5,788 SF
 MCM-1: 3,968 SF; 34% < 50%
 MCM-2: 356 SF; 3% < 50%
 FMW-1: 1,818 SF; 16% < 50%
 CURTAIN WALL: 4,028 SF; 35% < 50%
 STOREFRONT: 832 SF; 7% < 50%
 OVERHEAD DOORS: 576 SF; 5% < 50%

Client:
Asbury Automotive Group
 2905 Premiere Parkway, Suite 300
 Duluth, GA 30097
 Project Number: 22131
 Project Name:
Larry H. Miller Mesa Ford

460 E Auto Center Dr,
 Mesa, AZ 85204

Sheet Title:
Exterior Elevations

Sheet Number:
A400a



Ford

Ford

LARRY H. MILLER

SERVICE