

EXTERIOR ELEVATION KEYNOTES

NOTE: NOT ALL KEYNOTES MAY APPLY TO THIS SHEET
1 FIRE RISER / FIRE DEPARTMENT CONNECTION

- 2 KNOX BOX PER CITY OF MESA REQUIREMENTS
- 3 ALUMINUM FRAME WINDOW SYSTEM WITH 1" OFFSET INSULATED GLAZING
- 4 HOSE BIBB
- 5 LED WALL PACK
- 6 3'-0"x8'-0" HOLLOW METAL DOOR
- 7 14'-0"x14'-0" OVERHEAD COILING DOOR
- 8 12'-0"x14'-0" OVERHEAD COILING DOOR
- 9 PAINTED METAL PARAPET CAP
- 10 DASHED LINE INDICATES LINE OF ROOF BEYOND
- 11 DASHED LINE INDICATES FULLY SCREENED MECHANICAL UNIT
- 12 ACM CANOPY
- 13 ROOF DRAIN AND OVERFLOW DRAIN LEADERS DAYLIGHT WITH LAMBS TONGUE SPOUTS

EXTERIOR FINISHES & MATERIALS SCHEDULE

PAINT

- P-1 BEHR "BLACK"
- P-2 BEHR #134-2 "CHIC GRAY"
- P-3 BEHR #100-4 "POLAR BEAR"
- P-4 BEHR #134-3 "GREIGE"
- P-5 BEHR #133-7 "INTELLECTUAL"
- P-6 BEHR #114-6 "ANCESTRAL"

MASONRY

- CMU-1 8"x8"x16" SMOOTH FACE CMU STANDARD GRAY
- CMU-2 12"x8"x16" SMOOTH FACE CMU STANDARD GRAY
- CMU-3 8"x8"x16" SPLIT FACE CMU STANDARD GRAY
- CMU-4 12"x8"x16" SPLIT FACE CMU STANDARD GRAY

GLASS

- GL-1 1" INSULATED GLAZING UNIT VITRO SOLARBAN 90 (2) CLEAR + CLEAR MULLION FINISH: ARCADIA SYSTEMS- DARK BRONZE FINISH AB7

STUCCO

- STUC-1 7/8" STUCCO OVER CMU
- STUC-2 7/8" STUCCO OVER METAL STUD FRAMING

METAL

- MTL-1 ALUMINUM COMPOSITE PANEL: DARK BRONZE

BUILDING A ELEVATION MATERIAL PERCENTAGES

NORTH (SIDE):

RUNNING BOND CMU:	CMU-1, P-4	516 SF	15.9%
STACK BOND CMU:	CMU-1/ CMU-2, P-2	1401 SF	43.2%
SPLIT FACE CMU:	CMU-3/ CMU-4, P-5 CMU-3/ CMU-4, P-6	79 SF 79 SF	2.4%
MISCELLANEOUS:	GLASS METAL PAINT STUCCO	282 SF 200 SF 95 SF 590 SF	8.7% 6.2% 2.9% 18.2%
TOTAL:		3,242 SF	

EAST (REAR):

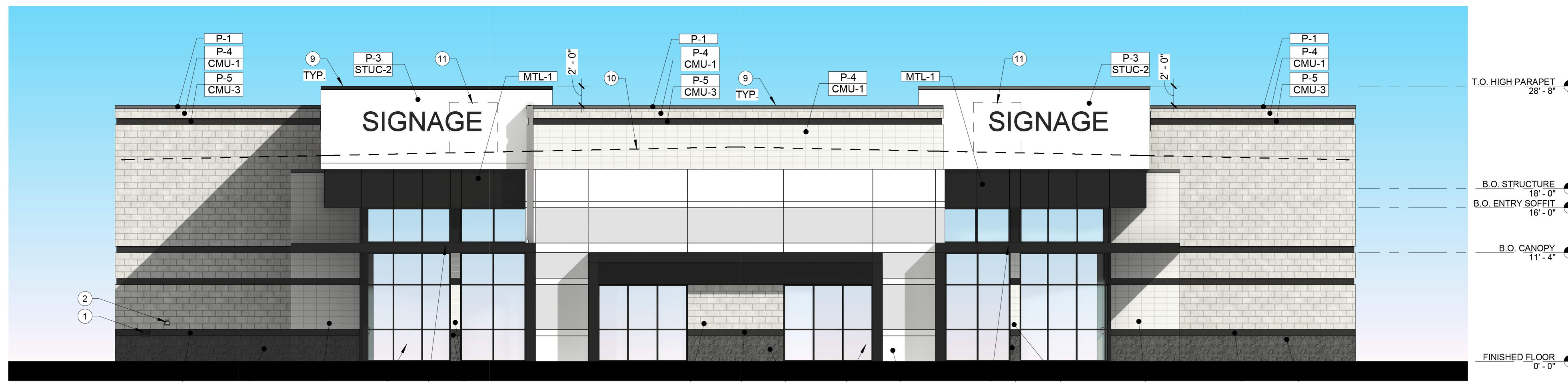
RUNNING BOND CMU:	CMU-1, P-4	850 SF	23.5%
STACK BOND CMU:	CMU-1, P-2	670 SF	18.5%
SPLIT FACE CMU:	CMU-3, P-5 CMU-3, P-6	110 SF 110 SF	3.1%
MISCELLANEOUS:	GLASS METAL PAINT STUCCO	0 SF 0 SF 389 SF 1484 SF	0% 0% 10.7% 41%
TOTAL:		3,612 SF	

SOUTH (SIDE):

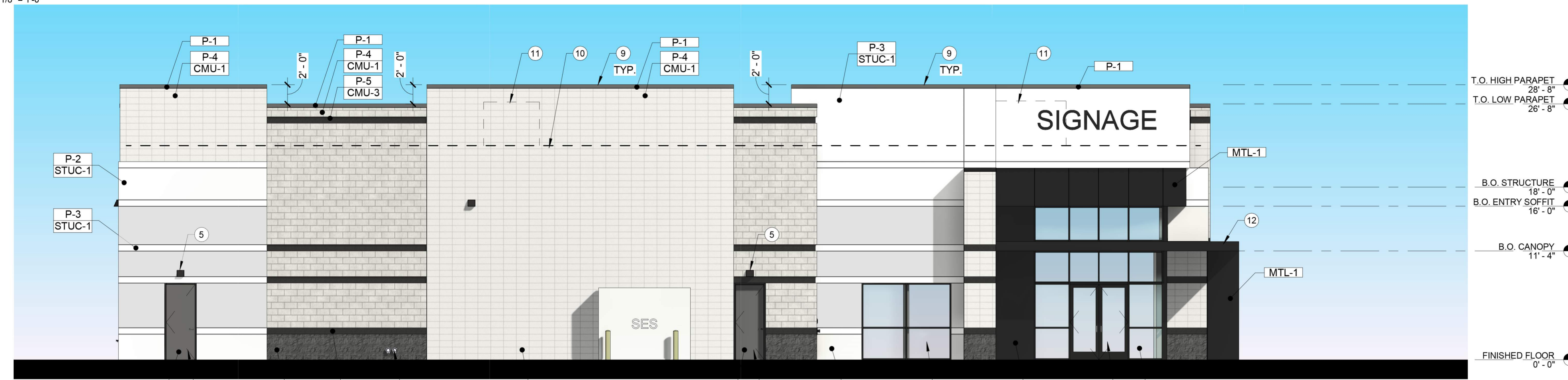
RUNNING BOND CMU:	CMU-1, P-4	1031 SF	31.8%
STACK BOND CMU:	CMU-1/ CMU-2, P-2	361 SF	11.1%
SPLIT FACE CMU:	CMU-3/ CMU-4, P-5 CMU-3/ CMU-4, P-6	11 SF 23 SF	0.3%
MISCELLANEOUS:	GLASS METAL PAINT STUCCO	282 SF 200 SF 68 SF 1571 SF	8.7% 6.2% 2.1% 48.4%
TOTAL:		3,242 SF	

WEST (FRONT):

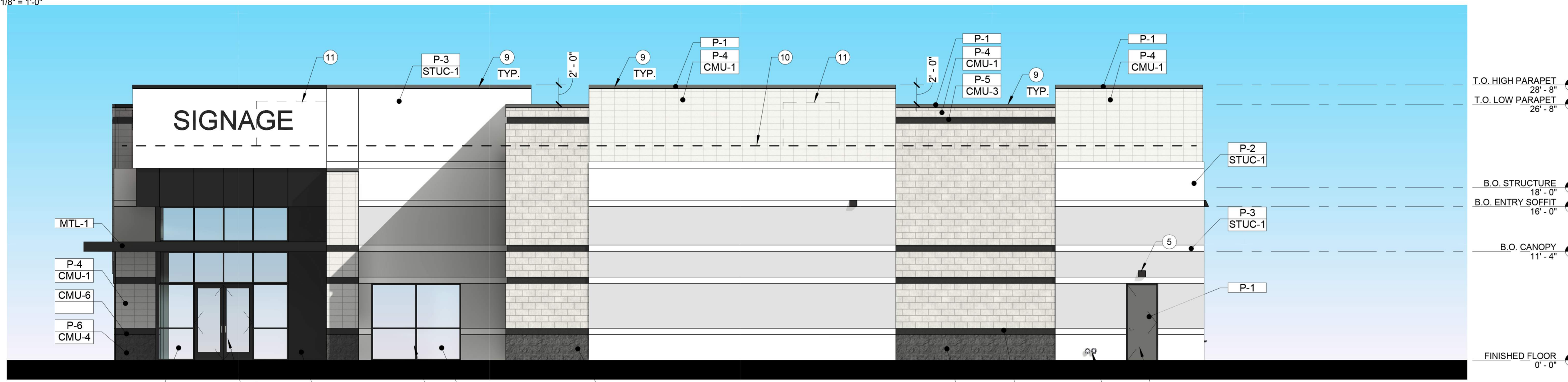
RUNNING BOND CMU:	CMU-1, P-4	890 SF	25.1%
STACK BOND CMU:	CMU-1/ CMU-2, P-2	400 SF	11.3%
SPLIT FACE CMU:	CMU-3/ CMU-4, P-5 CMU-3/ CMU-4, P-6	168 SF 158 SF	4.9%
MISCELLANEOUS:	GLASS METAL PAINT STUCCO	634 SF 364 SF 67 SF 865 SF	17.9% 10.0% 2.0% 24.5%
TOTAL:		3646 SF	



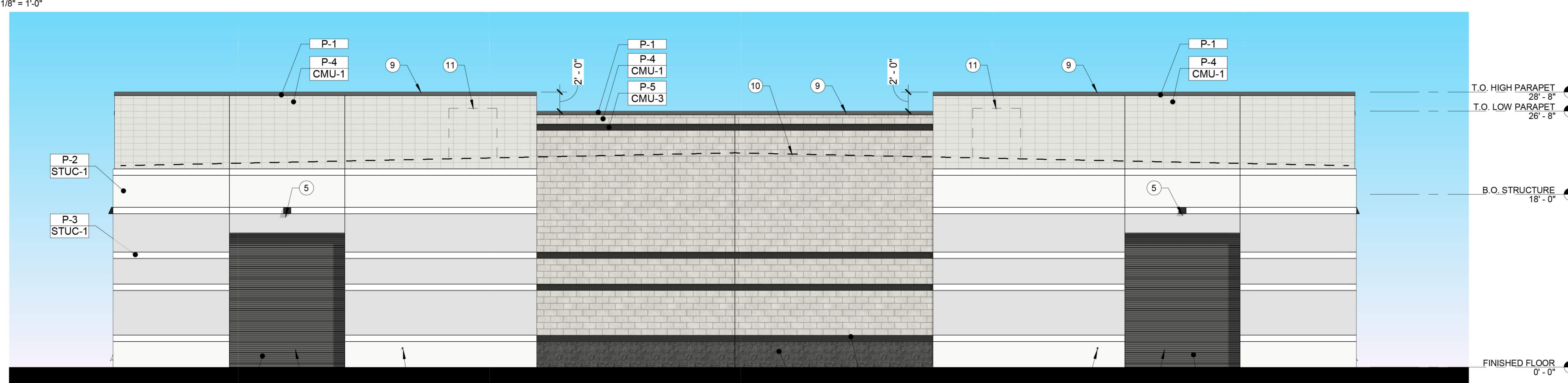
1 BUILDING A - WEST
1/8" = 1'-0"



2 BUILDING A - NORTH
1/8" = 1'-0"



3 BUILDING A - SOUTH
1/8" = 1'-0"



4 BUILDING A - EAST
1/8" = 1'-0"

EXTERIOR ELEVATION KEYNOTES

NOTE: NOT ALL KEYNOTES MAY APPLY TO THIS SHEET
1 FIRE RISER / FIRE DEPARTMENT CONNECTION

- 2 KNOX BOX PER CITY OF MESA REQUIREMENTS
- 3 ALUMINUM FRAME WINDOW SYSTEM WITH 1" OFFSET INSULATED GLAZING
- 4 HOSE BIBB
- 5 LED WALL PACK
- 6 3'-0"x8'-0" HOLLOW METAL DOOR
- 7 14'-0"x14'-0" OVERHEAD COILING DOOR
- 8 12'-0"x14'-0" OVERHEAD COILING DOOR
- 9 PAINTED METAL PARAPET CAP
- 10 DASHED LINE INDICATES LINE OF ROOF BEYOND
- 11 DASHED LINE INDICATES FULLY SCREENED MECHANICAL UNIT
- 12 ACM CANOPY
- 13 ROOF DRAIN AND OVERFLOW DRAIN LEADERS DAYLIGHT WITH LAMBS TONGUE SPOUTS

EXTERIOR FINISHES & MATERIALS SCHEDULE

PAINT

- P-1 BEHR "BLACK"
- P-2 BEHR #134-2 "CHIC GRAY"
- P-3 BEHR #100-4 "POLAR BEAR"
- P-4 BEHR #134-3 "GREIGE"
- P-5 BEHR #133-7 "INTELLECTUAL"
- P-6 BEHR #114-6 "ANCESTRAL"

MASONRY

- CMU-1 8"x8"x16" SMOOTH FACE CMU STANDARD GRAY
- CMU-2 12"x8"x16" SMOOTH FACE CMU STANDARD GRAY
- CMU-3 8"x8"x16" SPLIT FACE CMU STANDARD GRAY
- CMU-4 12"x8"x16" SPLIT FACE CMU STANDARD GRAY

GLASS

- GL-1 1" INSULATED GLAZING UNIT VITRO SOLARBAN 90 (2) CLEAR + CLEAR MULLION FINISH: ARCADIA SYSTEMS- DARK BRONZE FINISH AB7

STUCCO

- STUC-1 7/8" STUCCO OVER CMU
- STUC-2 7/8" STUCCO OVER METAL STUD FRAMING

METAL

- MTL-1 ALUMINUM COMPOSITE PANEL: DARK BRONZE

BUILDING B ELEVATION MATERIAL PERCENTAGES

SOUTH (SIDE):

RUNNING BOND CMU:
CMU-1, P-4
RUNNING BOND CMU TOTAL: 516 SF 15.9%

STACK BOND CMU:
CMU-1/CMU-2, P-2
STACK BOND CMU TOTAL: 1401 SF 43.2%

SPLIT FACE CMU:
CMU-3/CMU-4, P-5
CMU-3/CMU-4, P-6
SPLIT FACE CMU TOTAL: 158 SF 4.9%

MISCELLANEOUS:

GLASS	282 SF	8.7%
METAL	200 SF	6.2%
PAINT	95 SF	2.9%
STUCCO	590 SF	18.2%
TOTAL:	3,242 SF	

EAST (REAR):

RUNNING BOND CMU:
CMU-1, P-4
RUNNING BOND CMU TOTAL: 1005 SF 27.9%

STACK BOND CMU:
CMU-1, P-2
STACK BOND CMU TOTAL: 1963 SF 54.3%

SPLIT FACE CMU:
CMU-3, P-5
CMU-3, P-6
SPLIT FACE CMU TOTAL: 256 SF 7.1%

MISCELLANEOUS:

GLASS	0 SF	0%
METAL	0 SF	0%
PAINT	388 SF	0%
STUCCO	0 SF	10.7%
TOTAL:	3,612 SF	

NORTH (SIDE):

RUNNING BOND CMU:
CMU-1, P-4
RUNNING BOND CMU TOTAL: 532 SF 16.4%

STACK BOND CMU:
CMU-1/CMU-2, P-2
STACK BOND CMU TOTAL: 1401 SF 43.2%

SPLIT FACE CMU:
CMU-3/CMU-4, P-5
CMU-3/CMU-4, P-6
SPLIT FACE CMU TOTAL: 169 SF 5.2%

MISCELLANEOUS:

GLASS	282 SF	8.7%
METAL	200 SF	6.2%
PAINT	68 SF	2.1%
STUCCO	590 SF	18.2%
TOTAL:	3,242 SF	

WEST (FRONT):

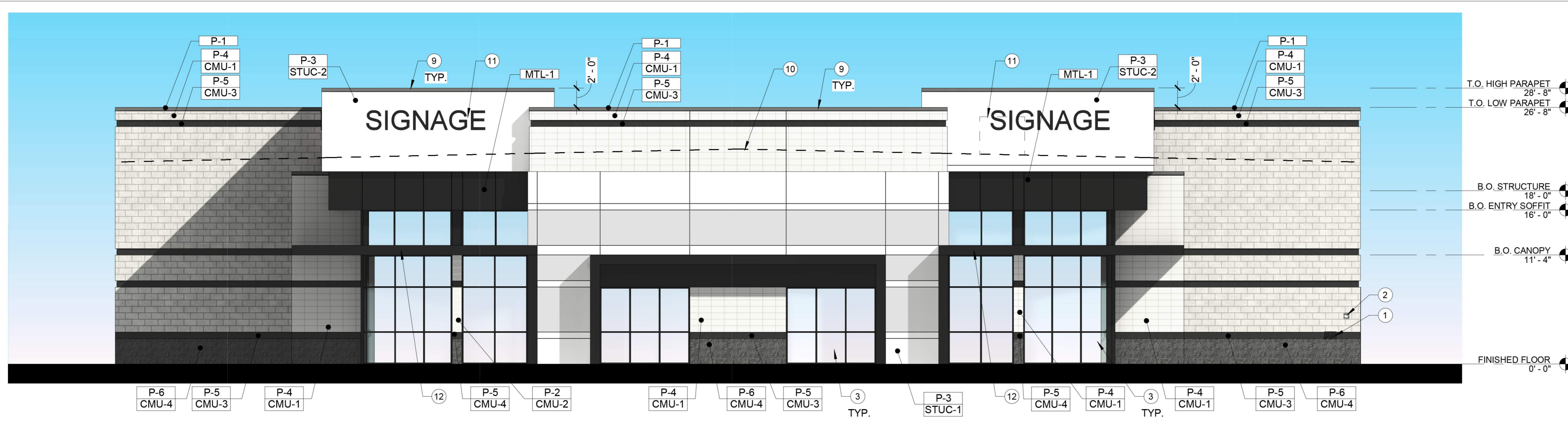
RUNNING BOND CMU:
CMU-1, P-4
RUNNING BOND CMU TOTAL: 890 SF 25.1%

STACK BOND CMU:
CMU-1/CMU-2, P-2
STACK BOND CMU TOTAL: 400 SF 11.3%

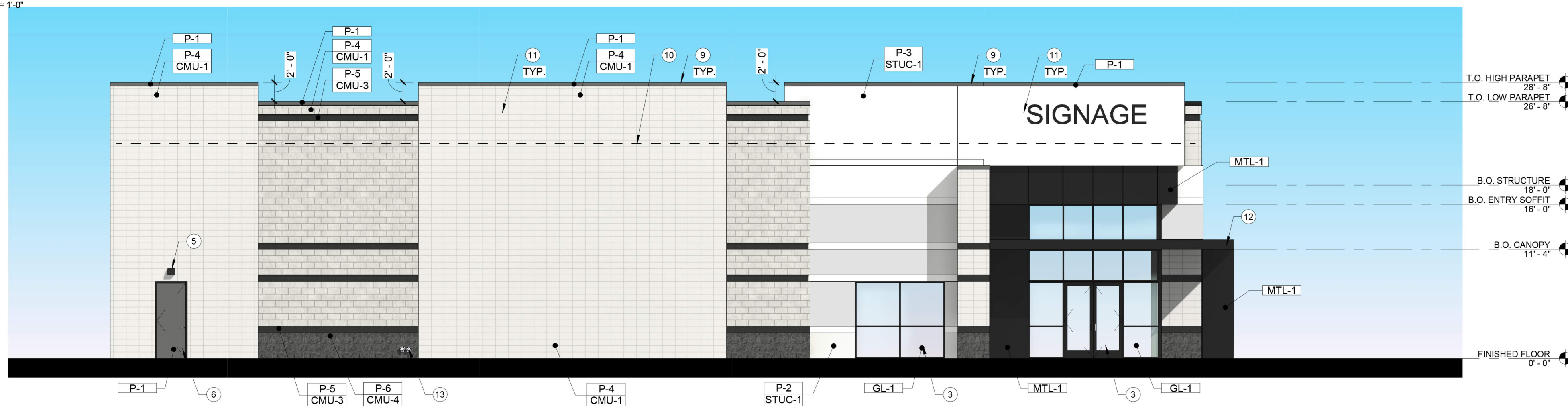
SPLIT FACE CMU:
CMU-3/CMU-4, P-5
CMU-3/CMU-4, P-6
SPLIT FACE CMU TOTAL: 328 SF 9.2%

MISCELLANEOUS:

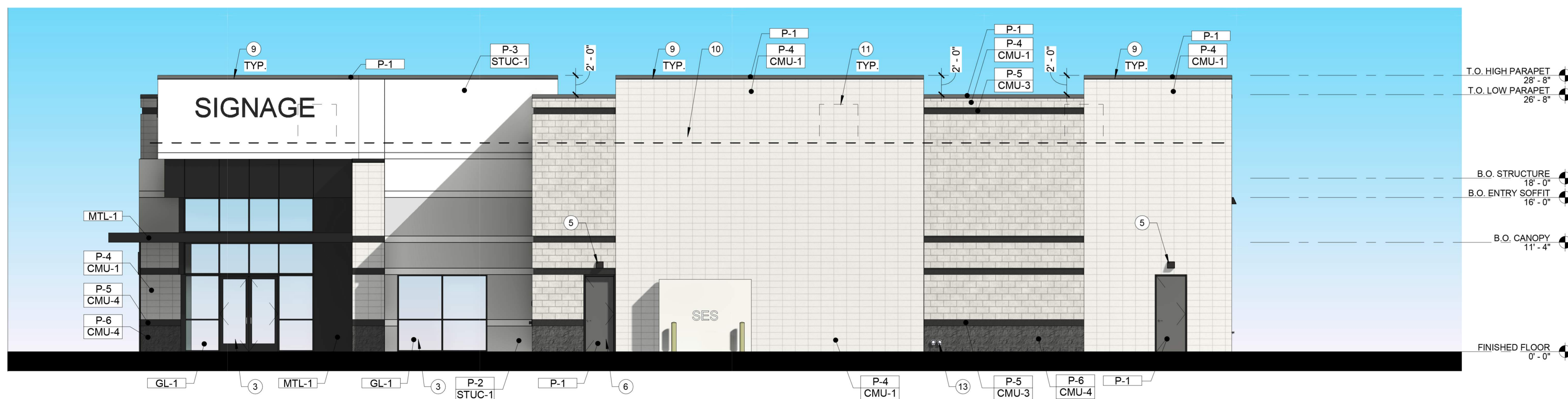
GLASS	634 SF	17.9%
METAL	364 SF	10.0%
PAINT	67 SF	2.0%
STUCCO	865 SF	24.5%
TOTAL:	3,546 SF	



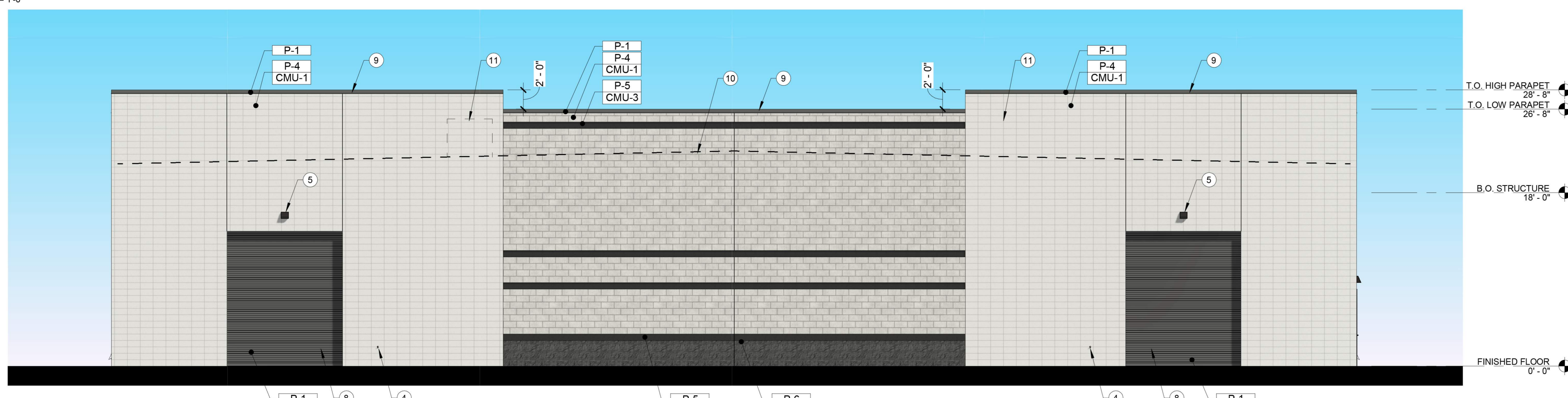
1 BUILDING B - WEST
1/8" = 1'-0"



2 BUILDING B - NORTH
1/8" = 1'-0"



3 BUILDING B - SOUTH
1/8" = 1'-0"



4 BUILDING B - EAST
1/8" = 1'-0"

EXTERIOR ELEVATION KEYNOTES

NOTE: NOT ALL KEYNOTES MAY APPLY TO THIS SHEET

- FIRE RISER / FIRE DEPARTMENT CONNECTION
- KNOX BOX PER CITY OF MESA REQUIREMENTS
- ALUMINUM FRAME WINDOW SYSTEM WITH 1" OFFSET INSULATED GLAZING
- HOSE BIBB
- LED WALL PACK
- 3'-0"x8'-0" HOLLOW METAL DOOR
- 14'-0"x14'-0" OVERHEAD COILING DOOR
- 12'-0"x14'-0" OVERHEAD COILING DOOR
- PAINTED METAL PARAPET CAP
- DASHED LINE INDICATES LINE OF ROOF BEYOND
- DASHED LINE INDICATES FULLY SCREENED MECHANICAL UNIT
- ACM CANOPY
- ROOF DRAIN AND OVERFLOW DRAIN LEADERS DAYLIGHT WITH LAMBS TONGUE SPOUTS

EXTERIOR FINISHES & MATERIALS SCHEDULE

PAINT

- P-1 BEHR "BLACK"
- P-2 BEHR #134-2 "CHIC GRAY"
- P-3 BEHR #100-4 "POLAR BEAR"
- P-4 BEHR #134-3 "GREIGE"
- P-5 BEHR #133-7 "INTELLECTUAL"
- P-6 BEHR #114-6 "ANCESTRAL"

MASONRY

- CMU-1 8"x8"x16" SMOOTH FACE CMU STANDARD GRAY
- CMU-2 12"x8"x16" SMOOTH FACE CMU STANDARD GRAY
- CMU-3 8"x8"x16" SPLIT FACE CMU STANDARD GRAY
- CMU-4 12"x8"x16" SPLIT FACE CMU STANDARD GRAY

GLASS

- GL-1 1" INSULATED GLAZING UNIT VITRO SOLARBAN 90 (2) CLEAR + CLEAR MULLION FINISH: ARCADIA SYSTEMS- DARK BRONZE FINISH AB7

STUCCO

- STUC-1 7/8" STUCCO OVER CMU
- STUC-2 7/8" STUCCO OVER METAL STUD FRAMING

METAL

- MTL-1 ALUMINUM COMPOSITE PANEL: DARK BRONZE

BUILDING C ELEVATION MATERIAL PERCENTAGES

NORTH (SIDE):

RUNNING BOND CMU: CMU-1, P-4	516 SF	15.9%
STACK BOND CMU: CMU-1/ CMU-2, P-2	1401 SF	43.2%
SPLIT FACE CMU: CMU-3/ CMU-4, P-5	79 SF	2.4%
SPLIT FACE CMU: CMU-3/ CMU-4, P-6	79 SF	2.4%
MISCELLANEOUS: GLASS	282 SF	8.7%
MISCELLANEOUS: METAL	200 SF	6.2%
MISCELLANEOUS: PAINT	95 SF	2.9%
MISCELLANEOUS: STUCCO	590 SF	18.2%
TOTAL:	3,242 SF	

EAST (REAR):

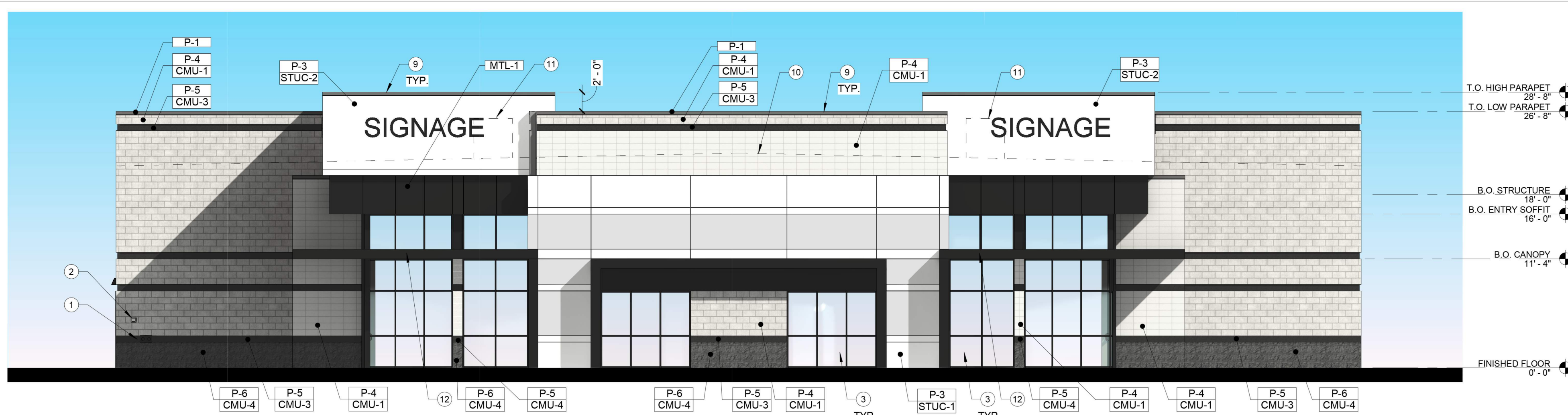
RUNNING BOND CMU: CMU-1, P-4	1005 SF	27.9%
STACK BOND CMU: CMU-1, P-2	1963 SF	54.3%
SPLIT FACE CMU: CMU-3, P-5	128 SF	3.6%
SPLIT FACE CMU: CMU-3, P-6	128 SF	3.6%
MISCELLANEOUS: GLASS	0 SF	0%
MISCELLANEOUS: METAL	0 SF	0%
MISCELLANEOUS: PAINT	368 SF	10.7%
MISCELLANEOUS: STUCCO	0 SF	0%
TOTAL:	3,612 SF	

SOUTH (SIDE):

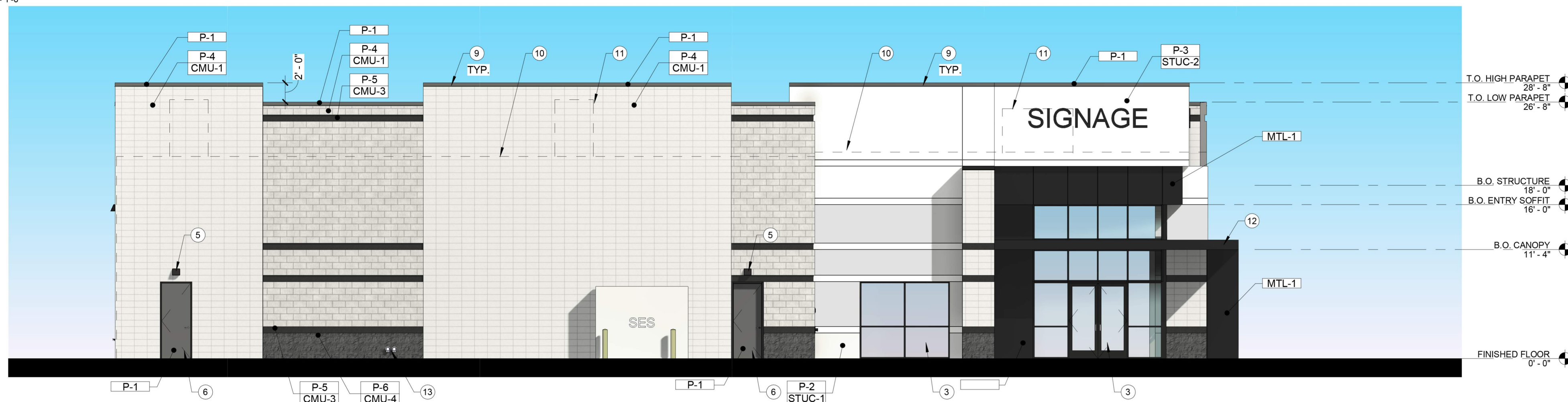
RUNNING BOND CMU: CMU-1, P-4	532 SF	16.4%
STACK BOND CMU: CMU-1/ CMU-2, P-2	1401 SF	43.2%
SPLIT FACE CMU: CMU-3/ CMU-4, P-5	88 SF	2.7%
SPLIT FACE CMU: CMU-3/ CMU-4, P-6	81 SF	2.5%
MISCELLANEOUS: GLASS	282 SF	8.7%
MISCELLANEOUS: METAL	200 SF	6.2%
MISCELLANEOUS: PAINT	68 SF	2.1%
MISCELLANEOUS: STUCCO	590 SF	18.2%
TOTAL:	3,242 SF	

WEST (FRONT):

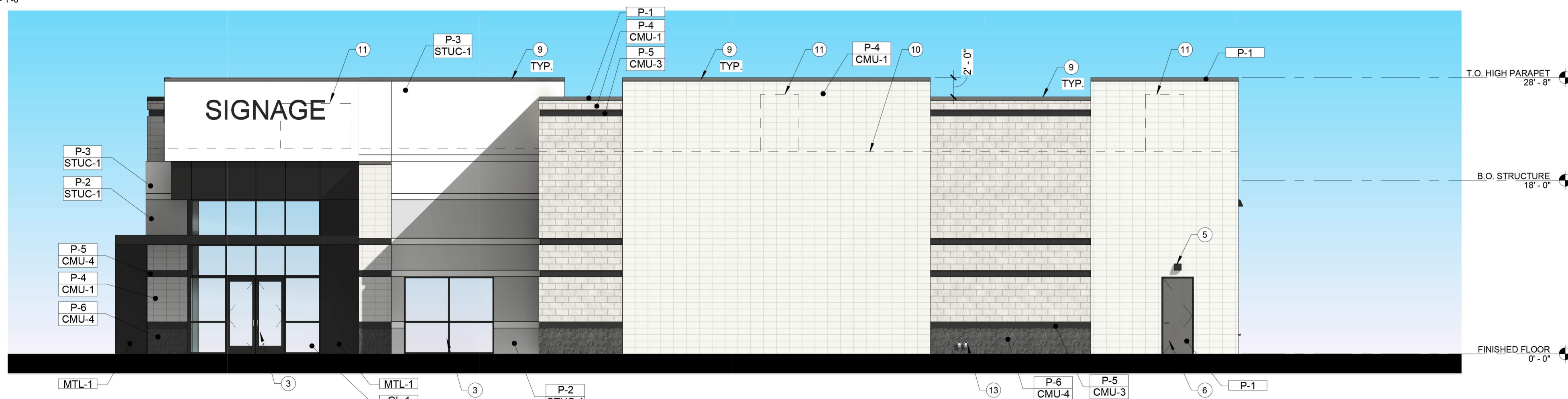
RUNNING BOND CMU: CMU-1, P-4	890 SF	25.1%
STACK BOND CMU: CMU-1/ CMU-2, P-2	400 SF	11.3%
SPLIT FACE CMU: CMU-3/ CMU-4, P-5	168 SF	4.9%
SPLIT FACE CMU: CMU-3/ CMU-4, P-6	158 SF	4.6%
MISCELLANEOUS: GLASS	634 SF	17.9%
MISCELLANEOUS: METAL	364 SF	10.0%
MISCELLANEOUS: PAINT	67 SF	2.0%
MISCELLANEOUS: STUCCO	865 SF	24.5%
TOTAL:	3,646 SF	



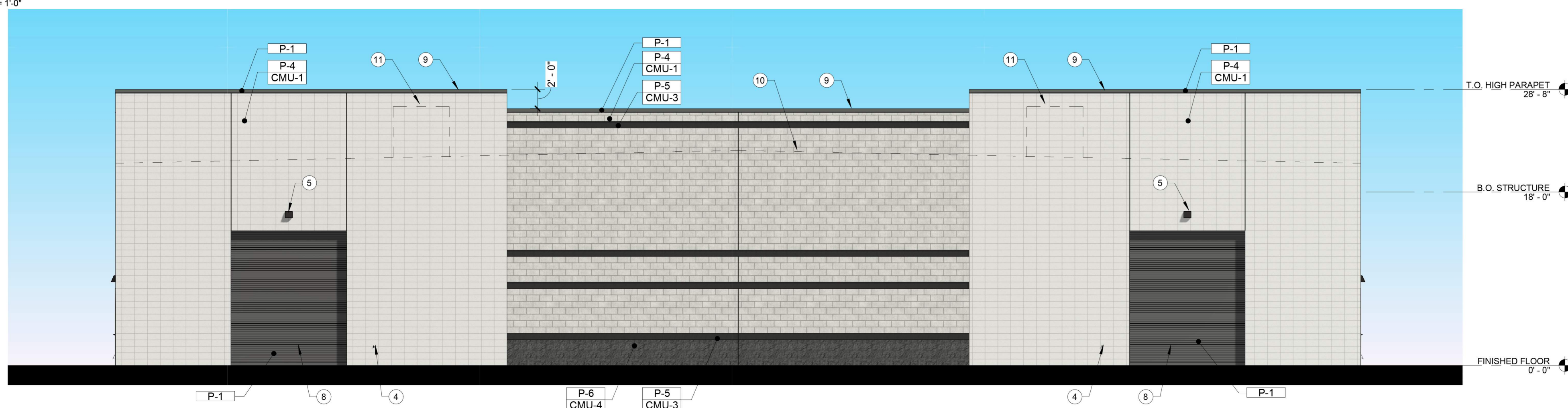
1 BUILDING C - WEST
1/8" = 1'-0"



2 BUILDING C - NORTH
1/8" = 1'-0"



3 BUILDING C - SOUTH
1/8" = 1'-0"



4 BUILDING C - EAST
1/8" = 1'-0"

EXTERIOR ELEVATION KEYNOTES

NOTE: NOT ALL KEYNOTES MAY APPLY TO THIS SHEET

- FIRE RISER / FIRE DEPARTMENT CONNECTION
- KNOX BOX PER CITY OF MESA REQUIREMENTS
- ALUMINUM FRAME WINDOW SYSTEM WITH 1" OFFSET INSULATED GLAZING
- HOSE BIBB
- LED WALL PACK
- 3'-0"x8'-0" HOLLOW METAL DOOR
- 14'-0"x14'-0" OVERHEAD COILING DOOR
- 12'-0"x14'-0" OVERHEAD COILING DOOR
- PAINTED METAL PARAPET CAP
- DASHED LINE INDICATES LINE OF ROOF BEYOND
- DASHED LINE INDICATES FULLY SCREENED MECHANICAL UNIT
- ACM CANOPY
- ROOF DRAIN AND OVERFLOW DRAIN LEADERS DAYLIGHT WITH LAMBS TONGUE SPOUTS

EXTERIOR FINISHES & MATERIALS SCHEDULE

PAINT

- P-1 BEHR "BLACK"
- P-2 BEHR #134-2 "CHIC GRAY"
- P-3 BEHR #130-4 "POLAR BEAR"
- P-4 BEHR #134-3 "GREIGE"
- P-5 BEHR #133-7 "INTELLECTUAL"
- P-6 BEHR #114-6 "ANCESTRAL"

MASONRY

- CMU-1 8"x8"x16" SMOOTH FACE CMU STANDARD GRAY
- CMU-2 12"x8"x16" SMOOTH FACE CMU STANDARD GRAY
- CMU-3 8"x8"x16" SPLIT FACE CMU STANDARD GRAY
- CMU-4 12"x8"x16" SPLIT FACE CMU STANDARD GRAY

GLASS

- GL-1 1" INSULATED GLAZING UNIT VITRO SOLARBAN 90 (2) CLEAR + CLEAR MULLION FINISH: ARCADIA SYSTEMS- DARK BRONZE FINISH AB7

STUCCO

- STUC-1 7/8" STUCCO OVER CMU
- STUC-2 7/8" STUCCO OVER METAL STUD FRAMING

METAL

- MTL-1 ALUMINUM COMPOSITE PANEL: DARK BRONZE

BUILDING D ELEVATION MATERIAL PERCENTAGES

SOUTH (SIDE):

RUNNING BOND CMU:			
CMU-1, P-4			
RUNNING BOND CMU TOTAL:	516 SF	13.1%	
STACK BOND CMU:			
CMU-1, CMU-2, P-2			
STACK BOND CMU TOTAL:	2080 SF	52.9%	
SPLIT FACE CMU:			
CMU-3, CMU-4, P-5	79 SF		
CMU-3, CMU-4, P-6	79 SF		
SPLIT FACE CMU TOTAL:	158 SF	4.0%	
MISCELLANEOUS:			
GLASS	282 SF	7.2%	
METAL	200 SF	5.1%	
PAINT	104 SF	2.7%	
STUCCO	590 SF	15.0%	
TOTAL:	3,930 SF		

WEST (REAR):

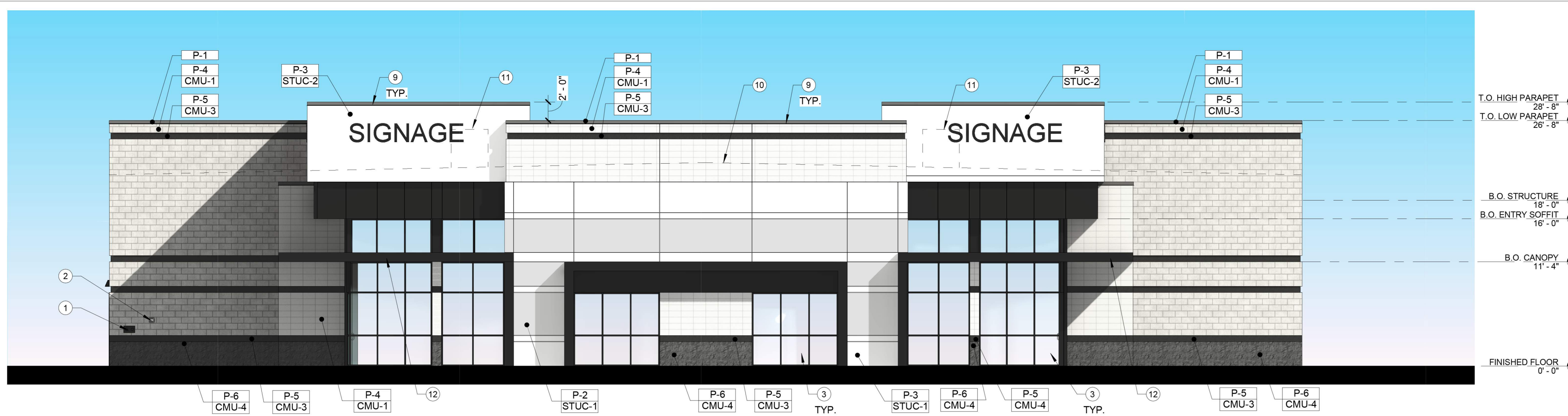
RUNNING BOND CMU:			
CMU-1, P-4			
RUNNING BOND CMU TOTAL:	1005 SF	27.9%	
STACK BOND CMU:			
CMU-1, P-2			
STACK BOND CMU TOTAL:	1963 SF	54.3%	
SPLIT FACE CMU:			
CMU-3, P-5	128 SF		
CMU-3, P-6	128 SF		
SPLIT FACE CMU TOTAL:	256 SF	7.1%	
MISCELLANEOUS:			
GLASS	0 SF	0%	
METAL	0 SF	0%	
PAINT	388 SF	0%	
STUCCO	0 SF	10.7%	
TOTAL:	3,612 SF		

NORTH (SIDE):

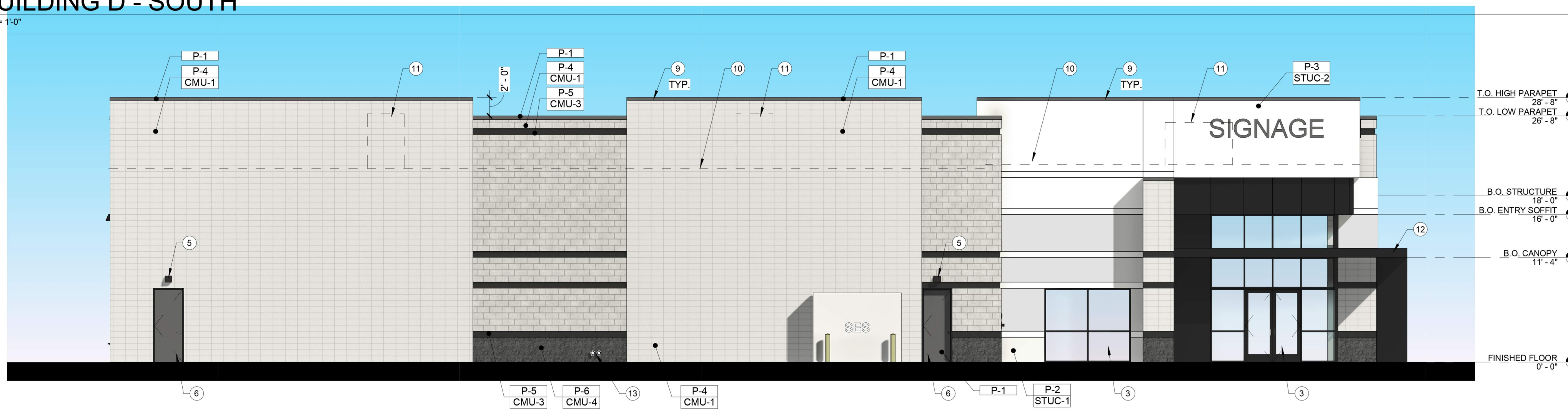
RUNNING BOND CMU:			
CMU-1, P-4			
RUNNING BOND CMU TOTAL:	532 SF	13.5%	
STACK BOND CMU:			
CMU-1, CMU-2, P-2			
STACK BOND CMU TOTAL:	2,080 SF	52.9%	
SPLIT FACE CMU:			
CMU-3, CMU-4, P-5	88 SF		
CMU-3, CMU-4, P-6	81 SF		
SPLIT FACE CMU TOTAL:	169 SF	4.3%	
MISCELLANEOUS:			
GLASS	282 SF	7.2%	
METAL	200 SF	5.1%	
PAINT	77 SF	2.0%	
STUCCO	590 SF	15.0%	
TOTAL:	3,930 SF		

EAST (FRONT):

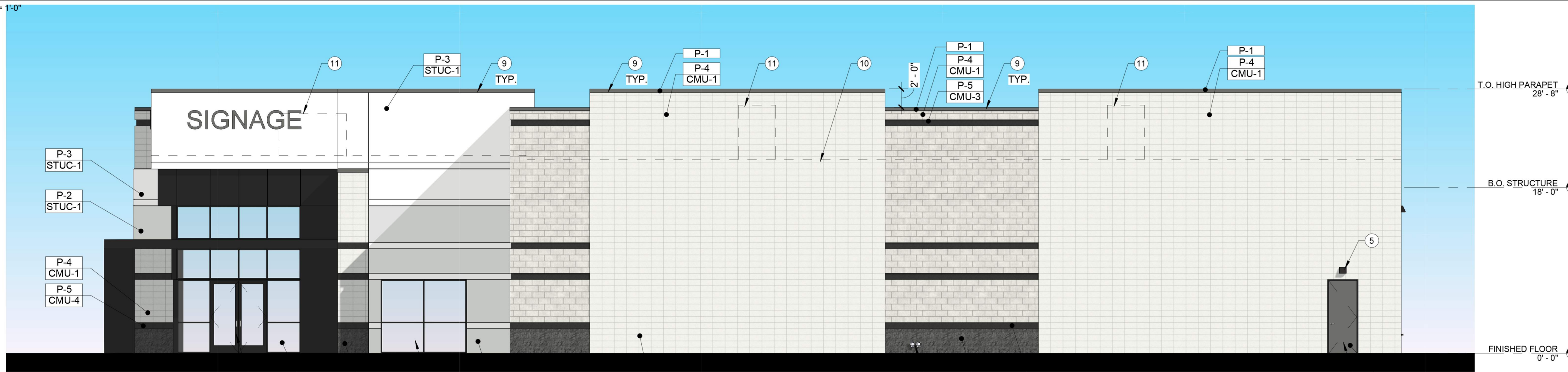
RUNNING BOND CMU:			
CMU-1, P-4			
RUNNING BOND CMU TOTAL:	890 SF	25.1%	
STACK BOND CMU:			
CMU-1, CMU-2, P-2			
STACK BOND CMU TOTAL:	400 SF	11.3%	
SPLIT FACE CMU:			
CMU-3, CMU-4, P-5	168 SF		
CMU-3, CMU-4, P-6	158 SF		
SPLIT FACE CMU TOTAL:	326 SF	9.2%	
MISCELLANEOUS:			
GLASS	634 SF	17.9%	
METAL	364 SF	10.0%	
PAINT	67 SF	2.0%	
STUCCO	865 SF	24.5%	
TOTAL:	3,646 SF		



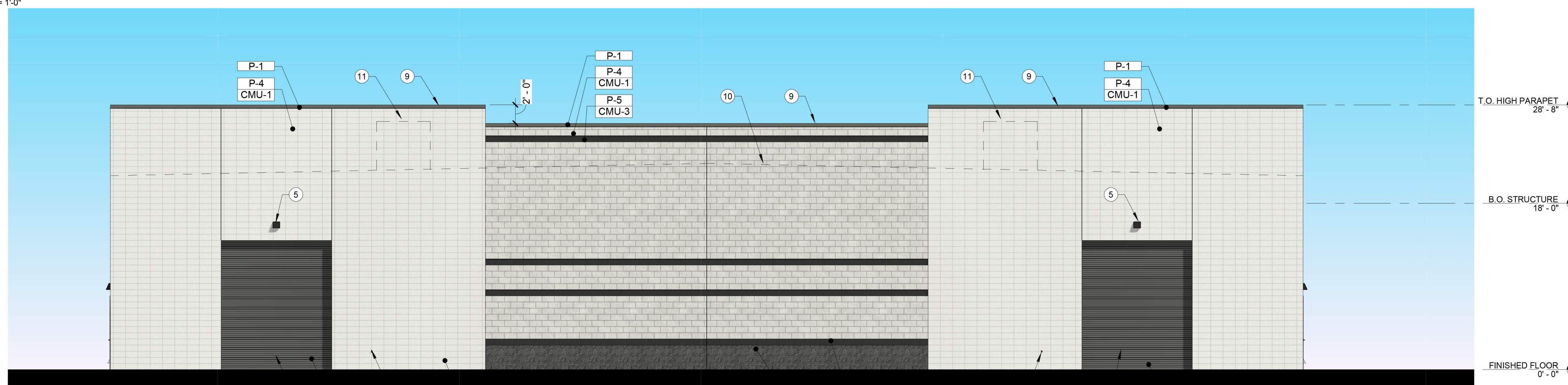
1 BUILDING D - SOUTH
1/8" = 1'-0"



2 BUILDING D - WEST
1/8" = 1'-0"



3 BUILDING D - EAST
1/8" = 1'-0"



4 BUILDING D - NORTH
1/8" = 1'-0"

EXTERIOR ELEVATION KEYNOTES

NOTE: NOT ALL KEYNOTES MAY APPLY TO THIS SHEET

- FIRE RISER / FIRE DEPARTMENT CONNECTION
- KNOX BOX PER CITY OF MESA REQUIREMENTS
- ALUMINUM FRAME WINDOW SYSTEM WITH 1" OFFSET INSULATED GLAZING
- HOSE BIBB
- LED WALL PACK
- 3'-0"x8'-0" HOLLOW METAL DOOR
- 14'-0"x14'-0" OVERHEAD COILING DOOR
- 12'-0"x14'-0" OVERHEAD COILING DOOR
- PAINTED METAL PARAPET CAP
- DASHED LINE INDICATES LINE OF ROOF BEYOND
- DASHED LINE INDICATES FULLY SCREENED MECHANICAL UNIT
- ACM CANOPY
- ROOF DRAIN AND OVERFLOW DRAIN LEADERS DAYLIGHT WITH LAMBS TONGUE SPOUTS

EXTERIOR FINISHES & MATERIALS SCHEDULE

PAINT	
P-1	BEHR "BLACK"
P-2	BEHR #134-2 "CHIC GRAY"
P-3	BEHR #100-4 "POLAR BEAR"
P-4	BEHR #134-3 "GREIGE"
P-5	BEHR #133-7 "INTELLECTUAL"
P-6	BEHR #114-6 "ANCESTRAL"

MASONRY	
CMU-1	8"x8"x16" SMOOTH FACE CMU STANDARD GRAY
CMU-2	12"x8"x16" SMOOTH FACE CMU STANDARD GRAY
CMU-3	8"x8"x16" SPLIT FACE CMU STANDARD GRAY
CMU-4	12"x8"x16" SPLIT FACE CMU STANDARD GRAY

GLASS	
GL-1	1" INSULATED GLAZING UNIT VITRO SOLARBAN 90 (2) CLEAR + CLEAR MULLION FINISH: ARCADIA SYSTEMS- DARK BRONZE FINISH AB7

STUCCO	
STUC-1	7/8" STUCCO OVER CMU
STUC-2	7/8" STUCCO OVER METAL STUD FRAMING

METAL	
MTL-1	ALUMINUM COMPOSITE PANEL: DARK BRONZE

BUILDING E ELEVATION MATERIAL PERCENTAGES

NORTH (SIDE):

RUNNING BOND CMU:		
CMU-1, P-4		
RUNNING BOND CMU TOTAL:	516 SF	13.1%
STACK BOND CMU:		
CMU-1/ CMU-2, P-2		
STACK BOND CMU TOTAL:	1291 SF	32.9%
SPLIT FACE CMU:		
CMU-3/ CMU-4, P-6	79 SF	
CMU-3/ CMU-4, P-6	79 SF	
SPLIT FACE CMU TOTAL:	158 SF	4.0%
MISCELLANEOUS:		
GLASS	282 SF	7.2%
METAL	200 SF	5.1%
PAINT	104 SF	2.7%
STUCCO	1379 SF	35.0%
TOTAL:	3,930 SF	

WEST (REAR):

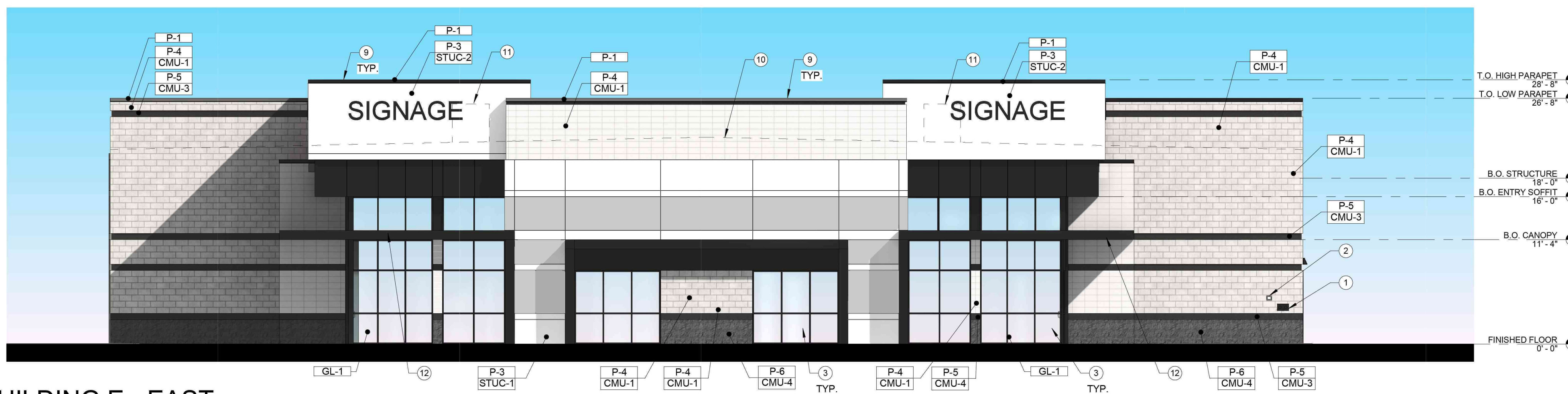
RUNNING BOND CMU:		
CMU-1, P-4		
RUNNING BOND CMU TOTAL:	864 SF	23.8%
STACK BOND CMU:		
CMU-1, P-2		
STACK BOND CMU TOTAL:	729 SF	20.2%
SPLIT FACE CMU:		
CMU-3, P-5	112 SF	
CMU-3, P-6	112 SF	
SPLIT FACE CMU TOTAL:	224 SF	6.2%
MISCELLANEOUS:		
GLASS	0 SF	0%
METAL	0 SF	0%
PAINT	390 SF	10.7%
STUCCO	1427 SF	39.1%
TOTAL:	3,630 SF	

SOUTH (SIDE):

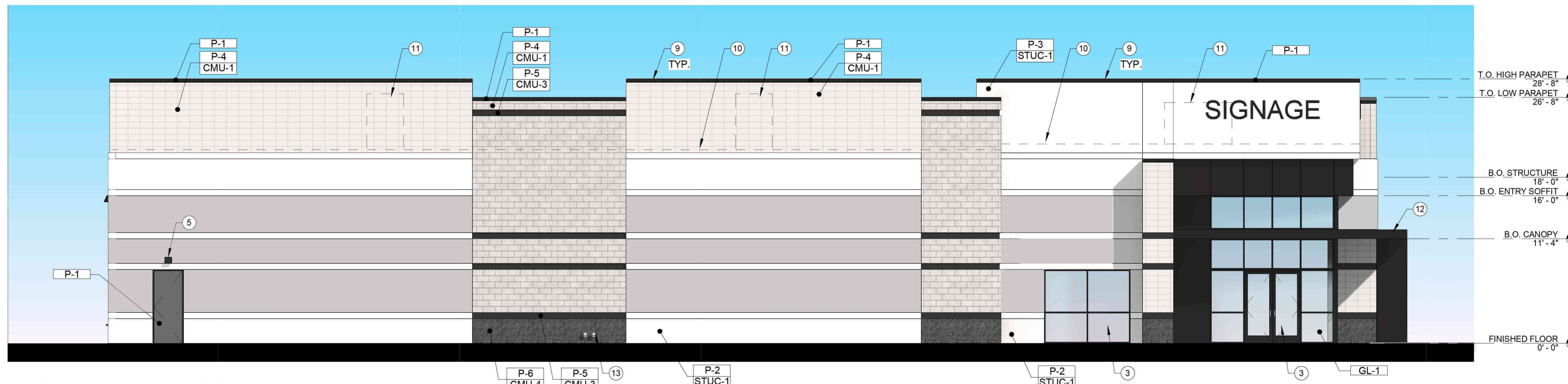
RUNNING BOND CMU:		
CMU-1, P-4		
RUNNING BOND CMU TOTAL:	532 SF	13.5%
STACK BOND CMU:		
CMU-1/ CMU-2, P-2		
STACK BOND CMU TOTAL:	2,080 SF	52.9%
SPLIT FACE CMU:		
CMU-3/ CMU-4, P-6	88 SF	
CMU-3/ CMU-4, P-6	81 SF	
SPLIT FACE CMU TOTAL:	169 SF	4.3%
MISCELLANEOUS:		
GLASS	282 SF	7.2%
METAL	200 SF	5.1%
PAINT	77 SF	2.0%
STUCCO	590 SF	15.0%
TOTAL:	3,930 SF	

EAST (FRONT):

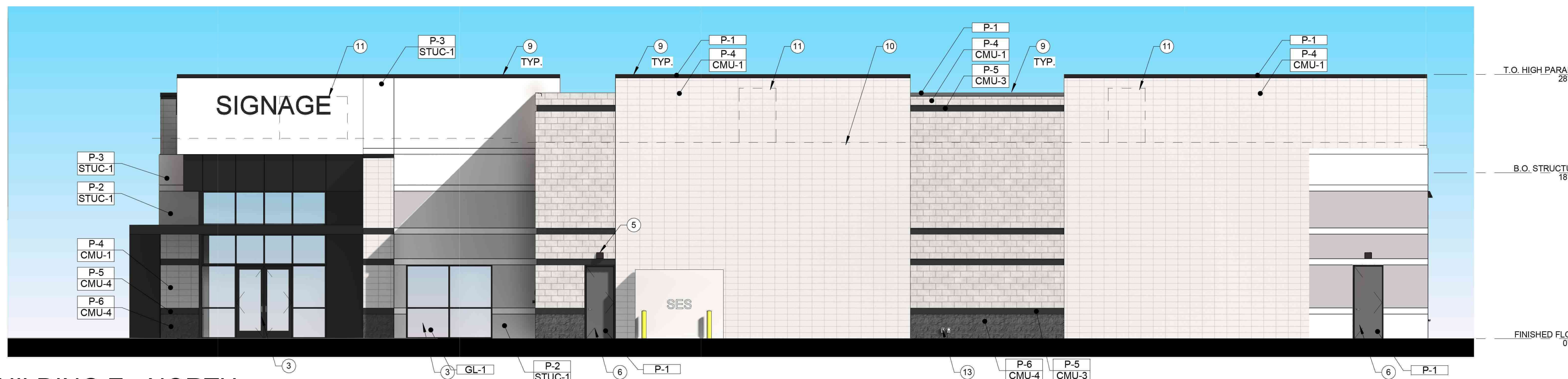
RUNNING BOND CMU:		
CMU-1, P-4		
RUNNING BOND CMU TOTAL:	890 SF	25.1%
STACK BOND CMU:		
CMU-1/ CMU-2, P-2		
STACK BOND CMU TOTAL:	400 SF	11.3%
SPLIT FACE CMU:		
CMU-3/ CMU-4, P-6	168 SF	
CMU-3/ CMU-4, P-6	158 SF	
SPLIT FACE CMU TOTAL:	326 SF	9.2%
MISCELLANEOUS:		
GLASS	634 SF	17.9%
METAL	364 SF	10.0%
PAINT	67 SF	2.0%
STUCCO	865 SF	24.5%
TOTAL:	3,646 SF	



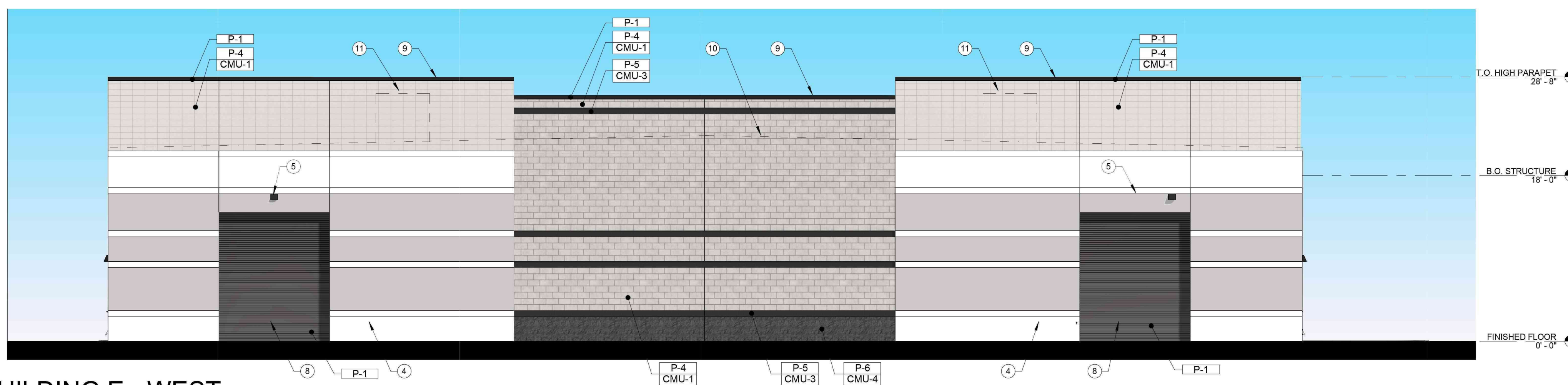
1 BUILDING E - EAST
1/8" = 1'-0"



2 BUILDING E - SOUTH
1/8" = 1'-0"



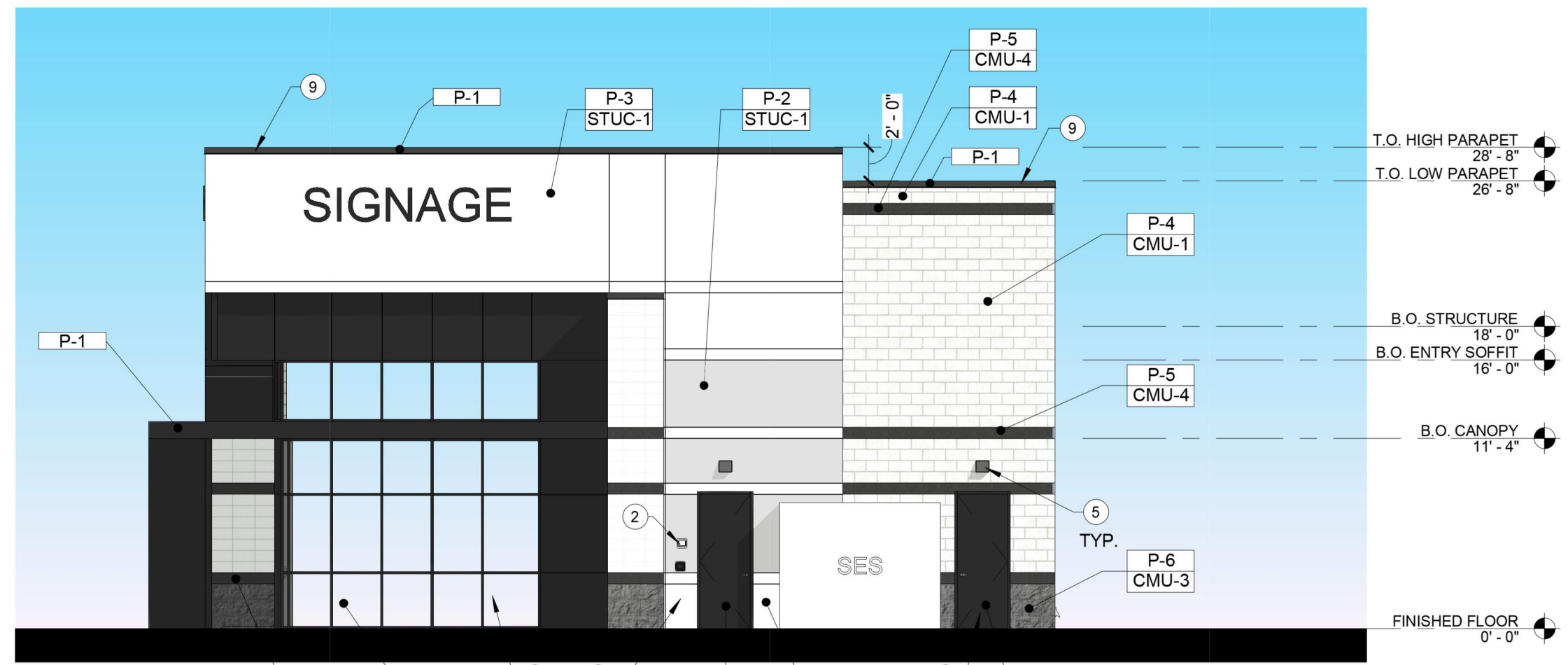
3 BUILDING E - NORTH
1/8" = 1'-0"



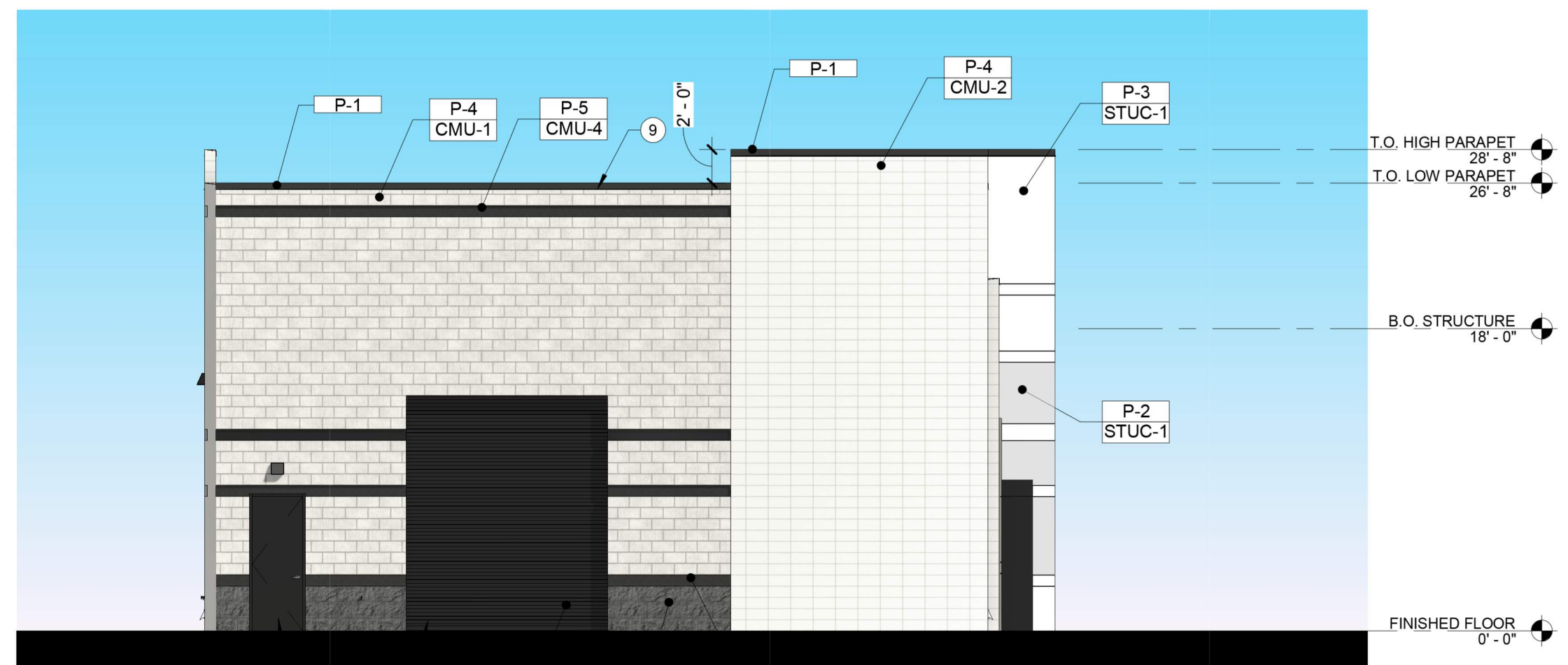
4 BUILDING E - WEST
1/8" = 1'-0"



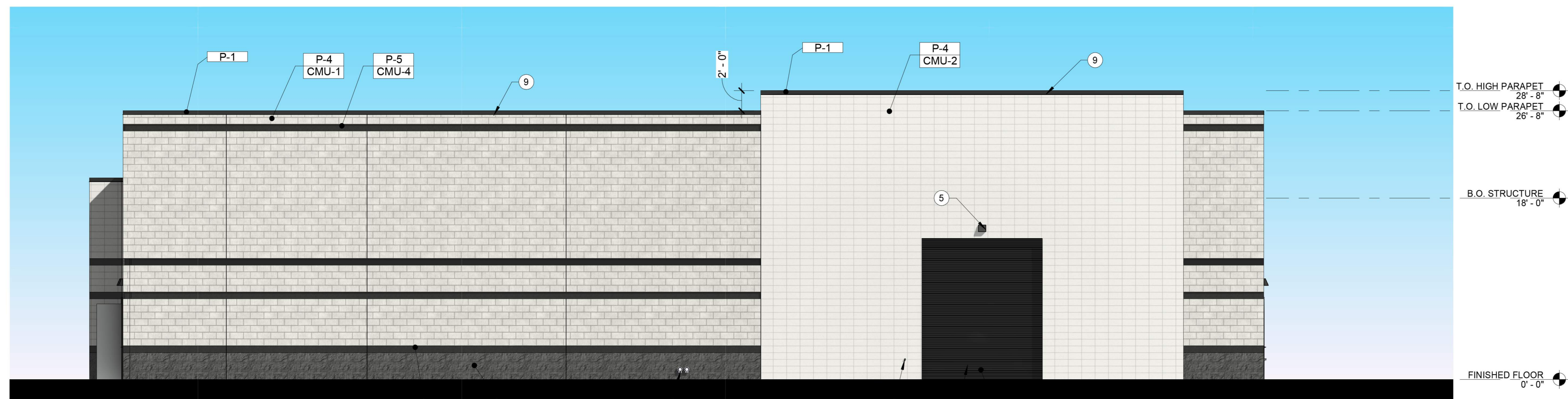
1 BUILDING H - SOUTH
1/8" = 1'-0"



2 BUILDING H - EAST
1/8" = 1'-0"



3 BUILDING H - WEST
1/8" = 1'-0"



4 BUILDING H - NORTH
1/8" = 1'-0"

EXTERIOR ELEVATION KEYNOTES

NOTE: NOT ALL KEYNOTES MAY APPLY TO THIS SHEET
1 FIRE RISER / FIRE DEPARTMENT CONNECTION

- 2 KNOX BOX PER CITY OF MESA REQUIREMENTS
- 3 ALUMINUM FRAME WINDOW SYSTEM WITH 1" OFFSET INSULATED GLAZING
- 4 HOSE BIBB
- 5 LED WALL PACK
- 6 3'-0"x8'-0" HOLLOW METAL DOOR
- 7 14'-0"x14'-0" OVERHEAD COILING DOOR
- 8 12'-0"x14'-0" OVERHEAD COILING DOOR
- 9 PAINTED METAL PARAPET CAP
- 10 DASHED LINE INDICATES LINE OF ROOF BEYOND
- 11 DASHED LINE INDICATES FULLY SCREENED MECHANICAL UNIT
- 12 ACM CANOPY
- 13 ROOF DRAIN AND OVERFLOW DRAIN LEADERS DAYLIGHT WITH LAMBS TONGUE SPOUTS

EXTERIOR FINISHES & MATERIALS SCHEDULE

PAINT

P-1	BEHR "BLACK"
P-2	BEHR #134-2 "CHIC GRAY"
P-3	BEHR #100-4 "POLAR BEAR"
P-4	BEHR #134-3 "GREIGE"
P-5	BEHR #133-7 "INTELLECTUAL"
P-6	BEHR #114-6 "ANCESTRAL"

MASONRY

CMU-1	8"x8"x16" SMOOTH FACE CMU STANDARD GRAY
CMU-2	12"x8"x16" SMOOTH FACE CMU STANDARD GRAY
CMU-3	8"x8"x16" SPLIT FACE CMU STANDARD GRAY
CMU-4	12"x8"x16" SPLIT FACE CMU STANDARD GRAY

GLASS

GL-1	1" INSULATED GLAZING UNIT VITRO SOLARBAN 90 (2) CLEAR + CLEAR MULLION FINISH: ARCADIA SYSTEMS- DARK BRONZE FINISH AB7
------	---

STUCCO

STUC-1	7/8" STUCCO OVER CMU
STUC-2	7/8" STUCCO OVER METAL STUD FRAMING

METAL

MTL-1	ALUMINUM COMPOSITE PANEL: DARK BRONZE
-------	---------------------------------------

