



Design Review Board



DRB22-00978

Sunflower Cremation & Burial



Request

- Design Review
- To allow an accessory crematorium





Location

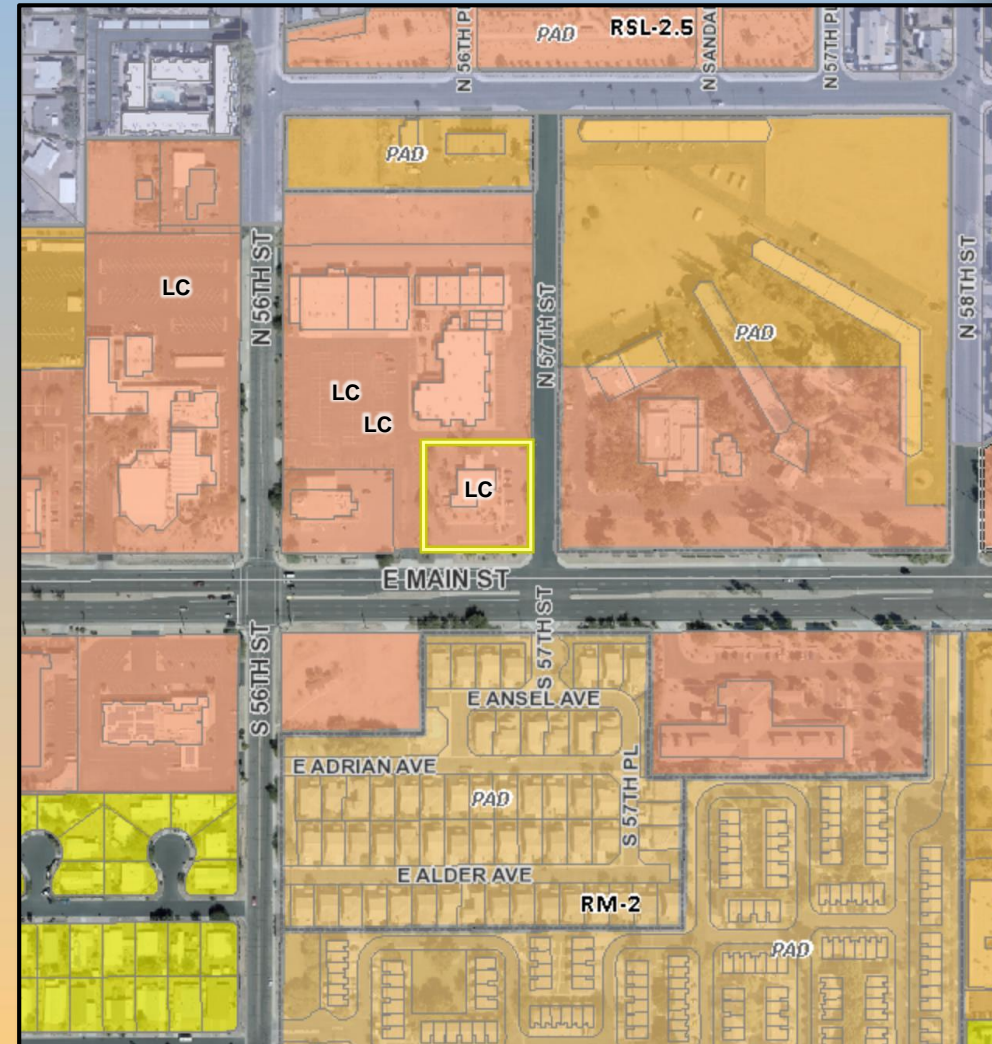
- 5650 East Main Street
- East of Recker Road
- North side of Main Street





Zoning

- Limited Commercial (LC)
- Funeral Parlor and Mortuary is a permitted use
- Accessory Crematorium requires approval of a Special Use Permit





Site Photo



Looking north from Main Street



Site Photo

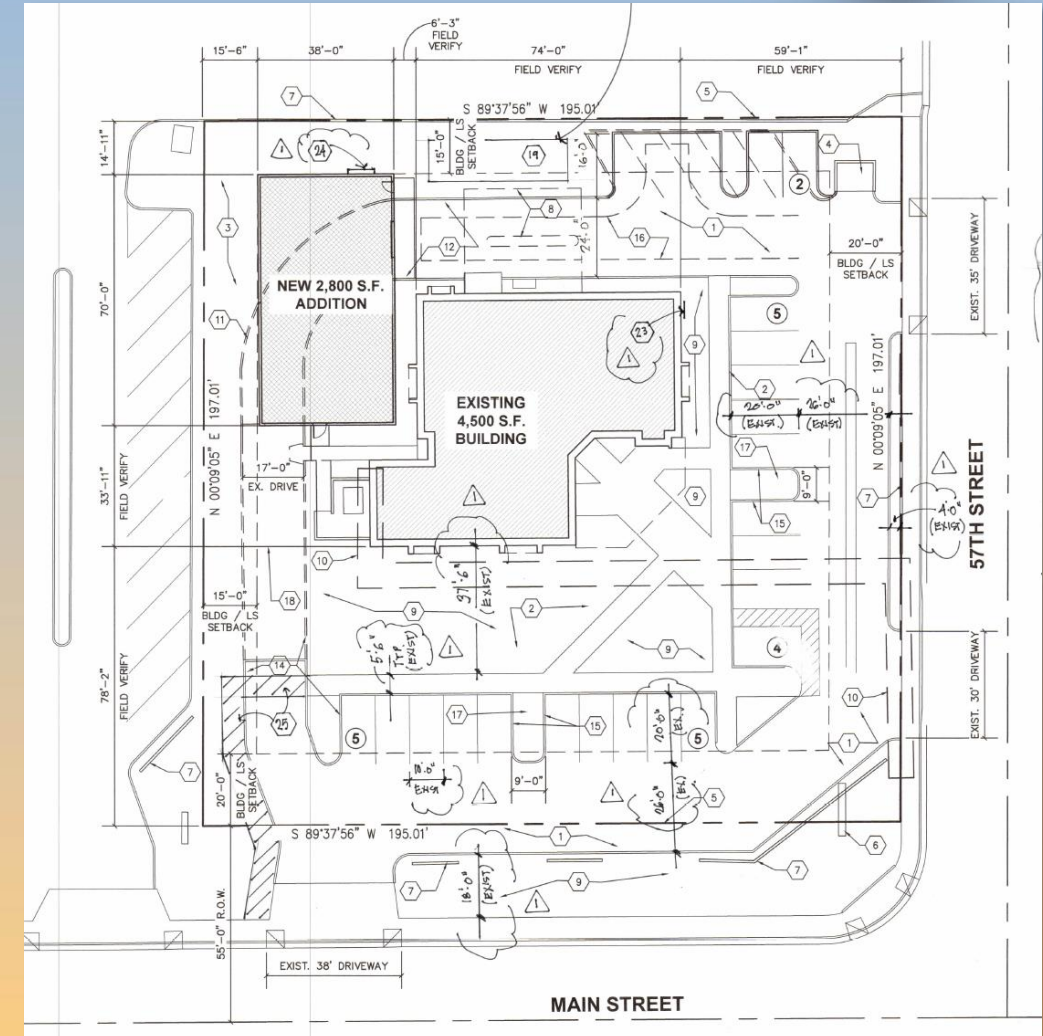


Looking west from 57th Street



Site Plan

- Existing 4,500 SF Funeral Home
- New 2,800 SF accessory crematorium
- Vehicular access from Main and 57th Street
- 21 parking spaces

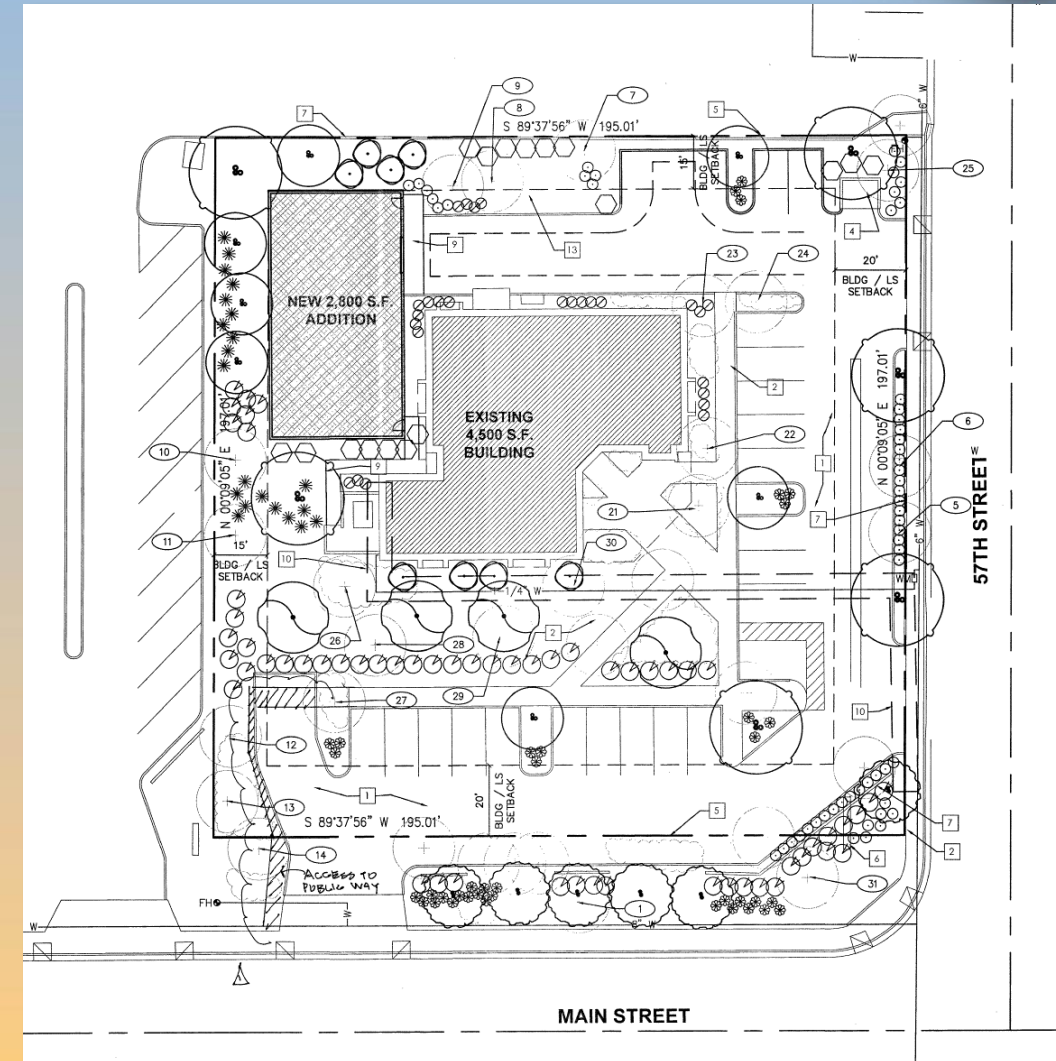




Landscape Plan

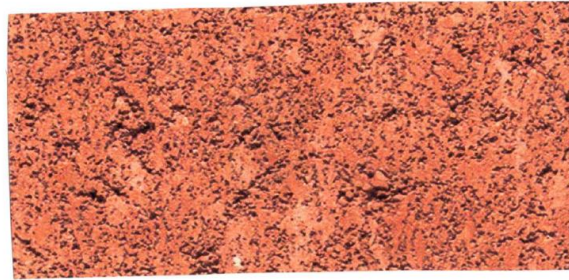
PLANT LEGEND

SYM.	BOTANICAL NAME COMMON NAME	SIZE	QTY/EQUIV.	NOTES/DETAILS
	Aloe vera Medicinal Aloe	5 GAL.	21 7	
	Colisa grandiflora "tuffa" Creeping Natal plum	5 GAL.	24 28	
	Chilopsis linearis "Ice Adams" Desert Willow	24" BOX	8 32	MULSTEM
	Convolvulus cneorum Bush Morning glory	1 GAL.	54 34	
	Brembofilia pygmaea Aussie Bluebell	5 GAL.	36 35	
	Leucophyllum frutescens "Compact" Pink Texas Sage	5 GAL.	17 30	
	Olea europaea Swan Hill Fruitful Olive	36" BOX	4 100	STANDARD
	Ebonopsis ebano Texas Ebony	36" BOX	4 150	
	Prosopis chilensis Chilean Mesquite	15 GAL.	5 125	MULSTEM
	Buzellia squibbiformis Coral Fountain	5 GAL.	39 35	
	Tecoma stans Yellow bells	5 GAL.	8 100	
	EXISTING SHRUBS TO REMAIN OLEANDER, CARISSA, PRICKLY PEAR, CASSIA			





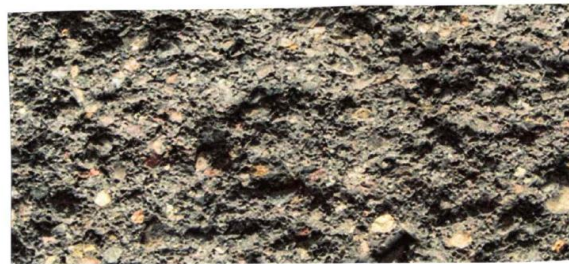
Material Board



SCORED "MATEO RED" CMU



"LIGHT GRAY" SPLIT FACE CMU



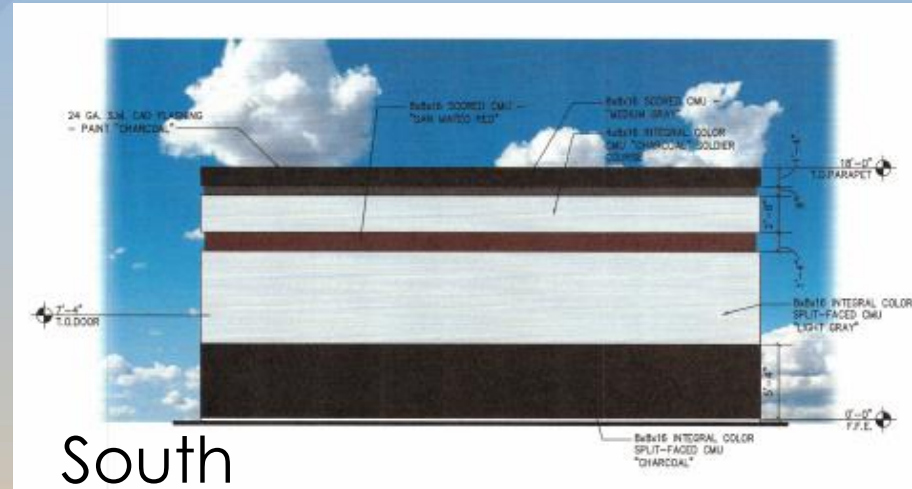
INTEGRAL COLOR "CHARCOAL" CMU



"MEDIUM GRAY" SCORED CMU



Elevations



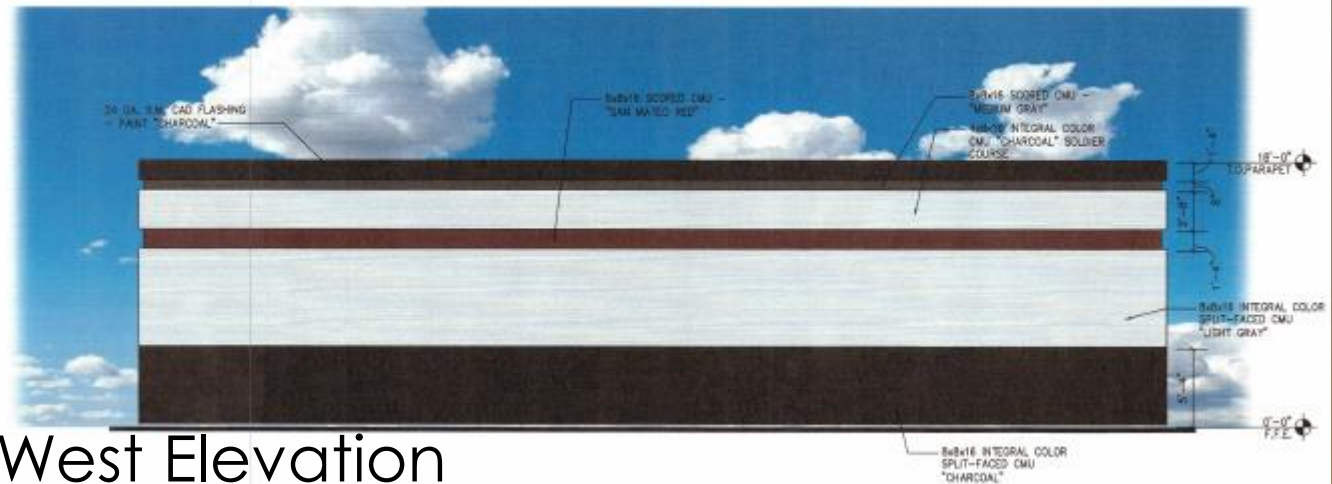
South
Elevation

SOUTH ELEVATION 696 SQUARE FEET OF SURFACE AREA

CHARCOAL BASE (5'-4") 206 S.F./31%
LIGHT GRAY FIELD BAND (6'-8") 258 S.F./37%
RED ACCENT BAND (1'-4") 52 S.F./7%
LIGHT GRAY ACCENT (2'-8") 102 S.F./14%
MEDIUM GRAY ACCENT (8") 26 S.F./4%
CHARCOAL TOP BAND (1'-4") 52 S.F./7%
 (INCLUDES PAINTED METAL EDGE TRIM)

WEST ELEVATION 1260 SQUARE FEET OF SURFACE AREA

CHARCOAL BASE (5'-4") 373 S.F./29%
LIGHT GRAY FIELD BAND (6'-8") 467 S.F./37%
RED ACCENT BAND (1'-4") 94 S.F./7%
LIGHT GRAY ACCENT (2'-8") 186 S.F./16%
MEDIUM GRAY ACCENT (8") 46 S.F./4%
CHARCOAL TOP BAND (1'-4") 94 S.F./7%
 (INCLUDES PAINTED METAL EDGE TRIM)



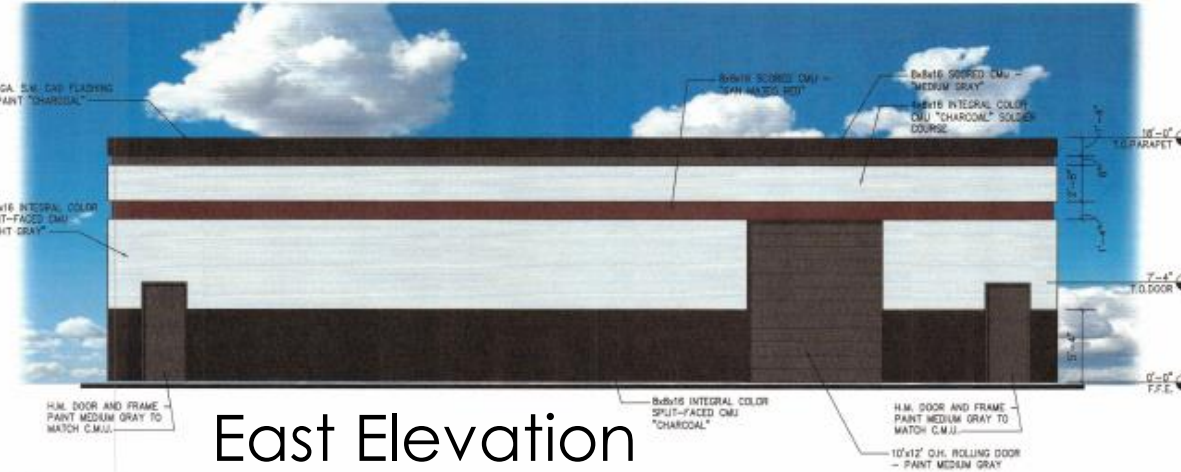
West Elevation



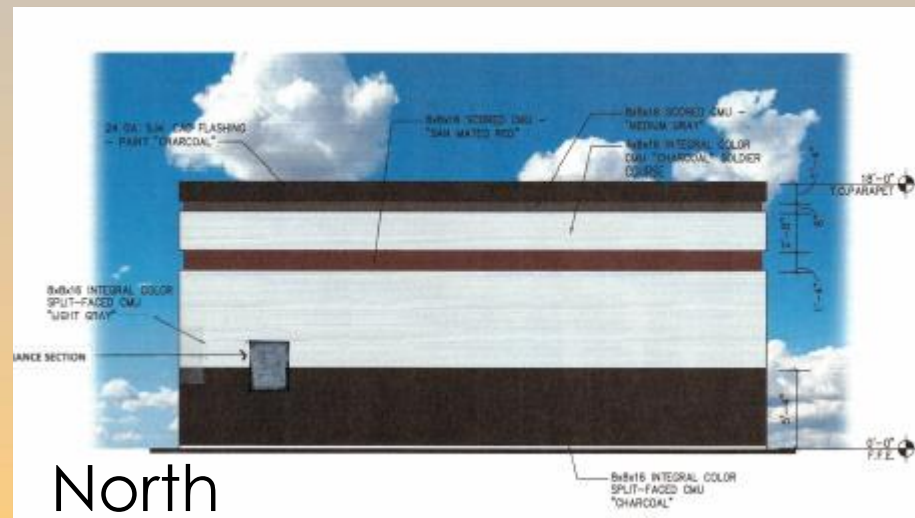
Elevations

EAST ELEVATION 1260 SQUARE FEET OF SURFACE AREA

CHARCOAL BASE (5'-4") 286 S.F./23%
 LIGHT GRAY FIELD BAND (6'-8") 386 S.F./31%
 RED ACCENT BAND (1'-4") 94 S.F./7%
 LIGHT GRAY ACCENT (2'-8") 186 S.F./14%
 MEDIUM GRAY ACCENT (8") 46 S.F./4%
 CHARCOAL TOP BAND (1'-4") 94 S.F./7%
 (INCLUDES PAINTED METAL EDGE TRIM)
 OVERHEAD DOOR 120 S.F./10%
 MAN DOOR AND FRAME 24 S.F./2%
 MAN DOOR AND FRAME 24 S.F./2%



East Elevation



North

NORTH ELEVATION 696 SQUARE FEET OF SURFACE AREA

CHARCOAL BASE (5'-4") 206 S.F./31%
 LIGHT GRAY FIELD BAND (6'-8") 258 S.F./37%
 RED ACCENT BAND (1'-4") 52 S.F./7%
 LIGHT GRAY ACCENT (2'-8") 102 S.F./14%
 MEDIUM GRAY ACCENT (8") 26 S.F. 4%
 CHARCOAL TOP BAND (1'-4") 52 S.F. 7%
 (INCLUDES PAINTED METAL EDGE TRIM)



Renderings



PROPOSED SOUTH WEST ELEVATION

SCALE: 1/4"=1'-0"



PROPOSED NORTH WEST ELEVATION

SCALE: 1/4"=1'-0"



Alternative Compliance

- ✓ Materials. Facades shall incorporate at least 3 different materials
- ✓ Materials. No more than 50% of the façade may be covered with one single material



Findings

Staff is seeking your review and recommendation on the following:

- ✓ Proposed building elevations and landscape design
- ✓ Alternative compliance requests

Staff welcomes any feedback

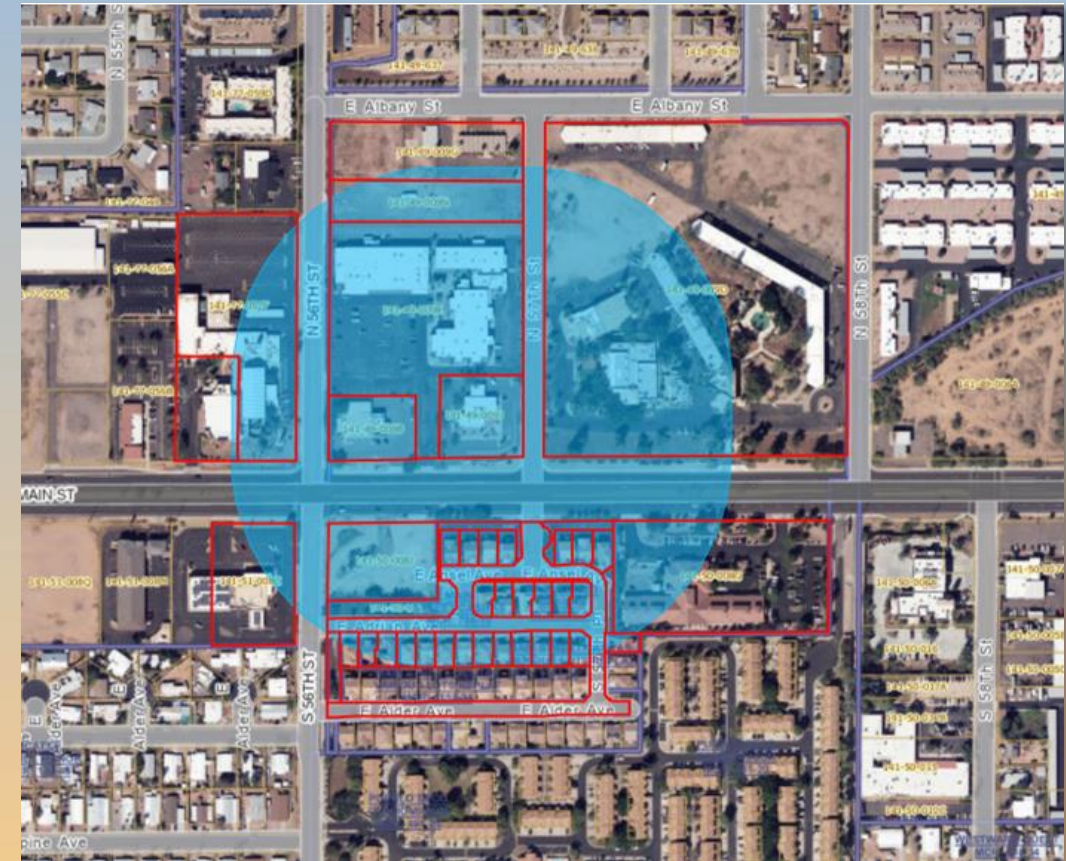


Design Review Board



Citizen Participation

- Notified property owners within 500 feet
- Staff and applicant have received no comments or concerns regarding the proposed elevations





General Plan

Neighborhood with Transit Corridor Overlay

- Safe places for people to live and enjoy the surrounding community
- Often have associated nonresidential uses

