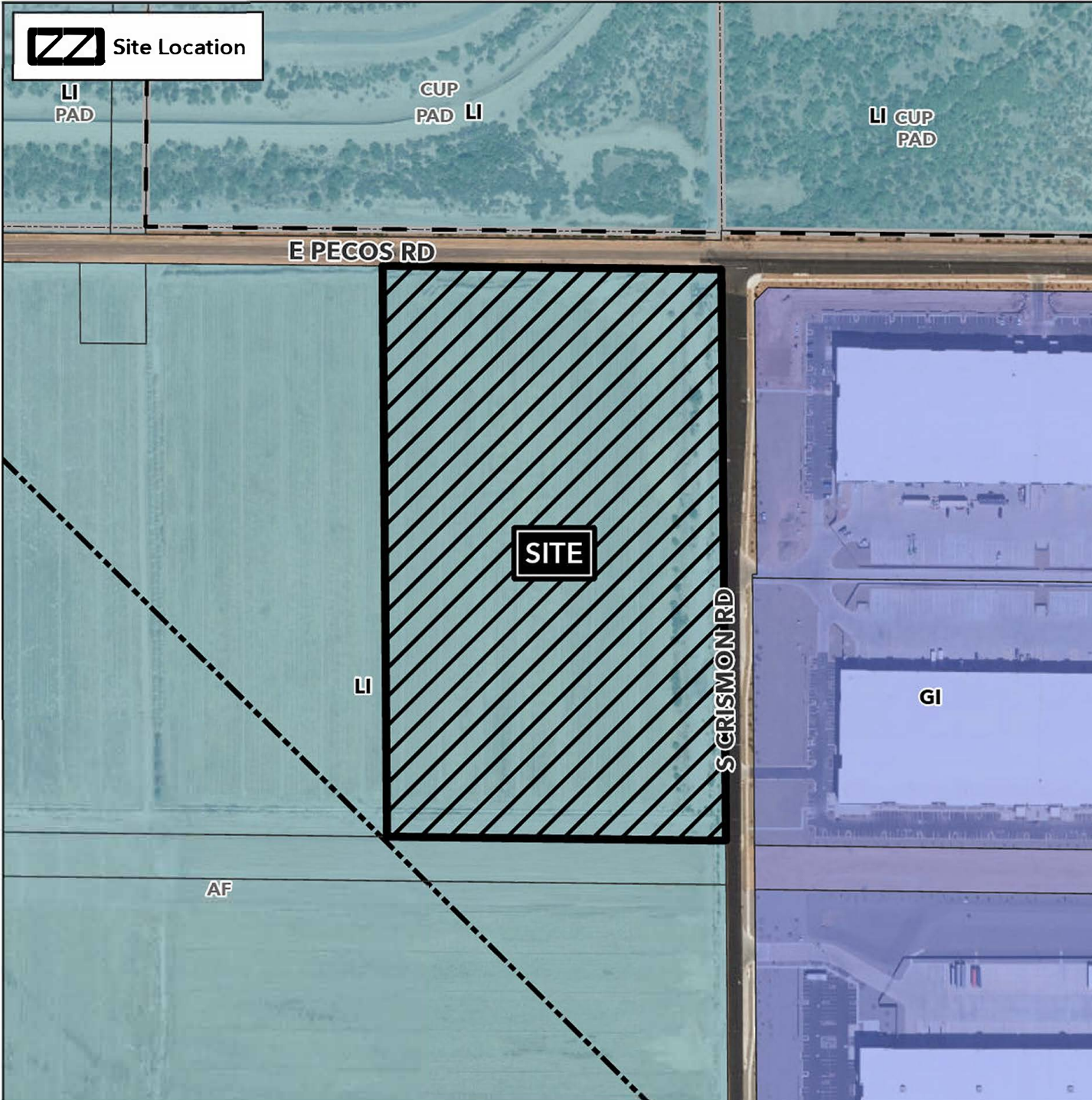


Planning and Zoning Vicinity Map: ZON24-00474

Case Details



Case:

ZON24-00474

Site / Address:

(District 6). Within the 9900 block of East Pecos Road (south side) and within the 6800 to 7200 blocks of South Crismon Road (west side). Located south of Pecos Road and west of Crismon Road. (22.4+ acres).

Request:

Rezone from Light Industrial (LI) to Light Industrial with a Planned Area Development overlay (LI-PAD) and Site Plan Review. This request will allow for an industrial development.

