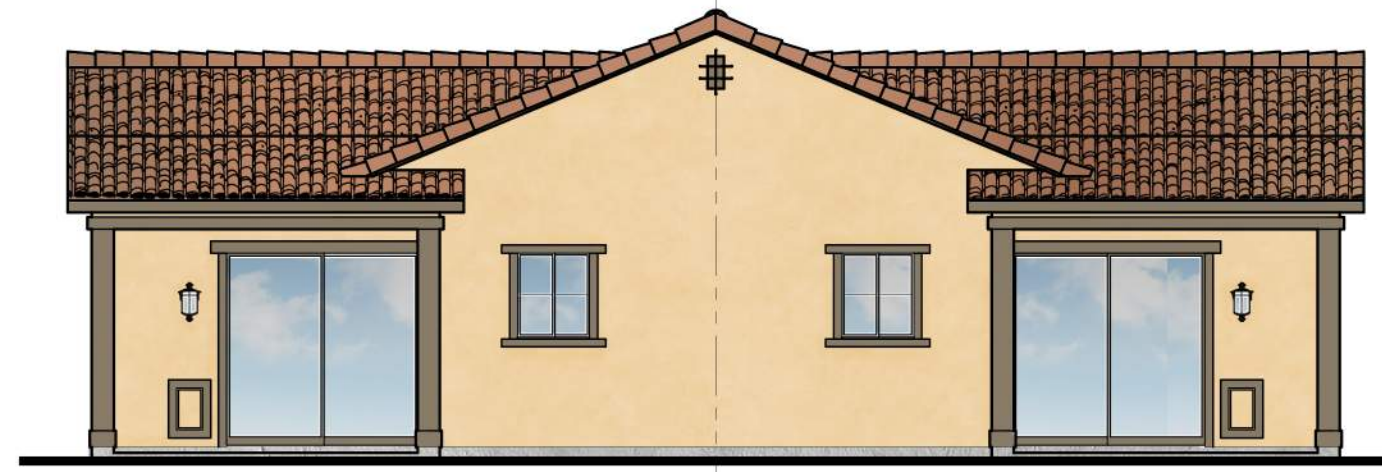


ALT LEFT / RIGHT ELEVATION
ELEVATION A - SANTA BARBARA 1/8" = 1'-0"



RIGHT ELEVATION
ELEVATION A - SANTA BARBARA 1/8" = 1'-0"



REAR ELEVATION
ELEVATION A - SANTA BARBARA 1/8" = 1'-0"



LEFT ELEVATION
ELEVATION A - SANTA BARBARA 1/8" = 1'-0"



FRONT ELEVATION
ELEVATION A - SANTA BARBARA 1/4" = 1'-0"

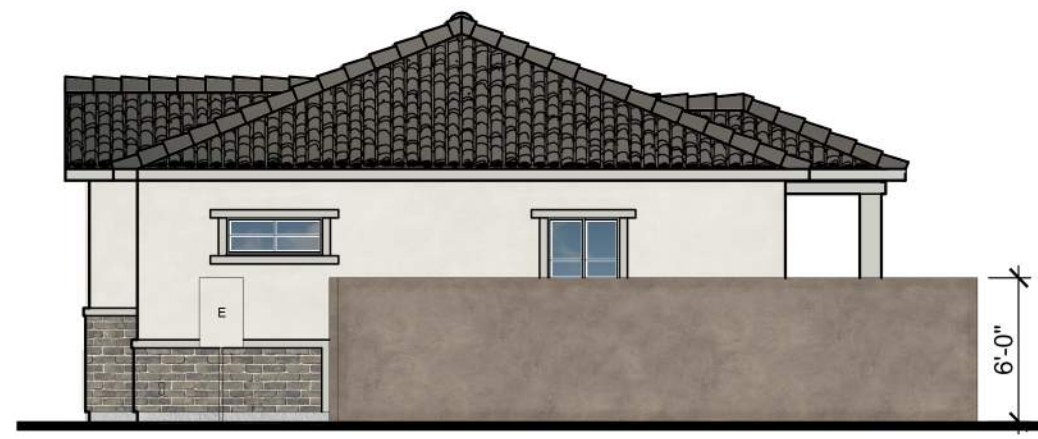
- DECORATIVE METAL
- CONCRETE ROOF TILE
- DECORATIVE SHUTTERS
- WOOD FASCIA
- STUCCO BODY
- COACH LIGHT
- ADDRESS MARKER
- STUCCO POPOUT
- BRICK VENEER

MATERIAL CALCULATION	
FRONT FACADE =	458 SQ. FT.
PRIMARY 1 MATERIAL = (STUCCO)	338 SQ. FT. = 74%
PRIMARY 2 MATERIAL = (BRICK VENEER)	123 SQ. FT. = 26%

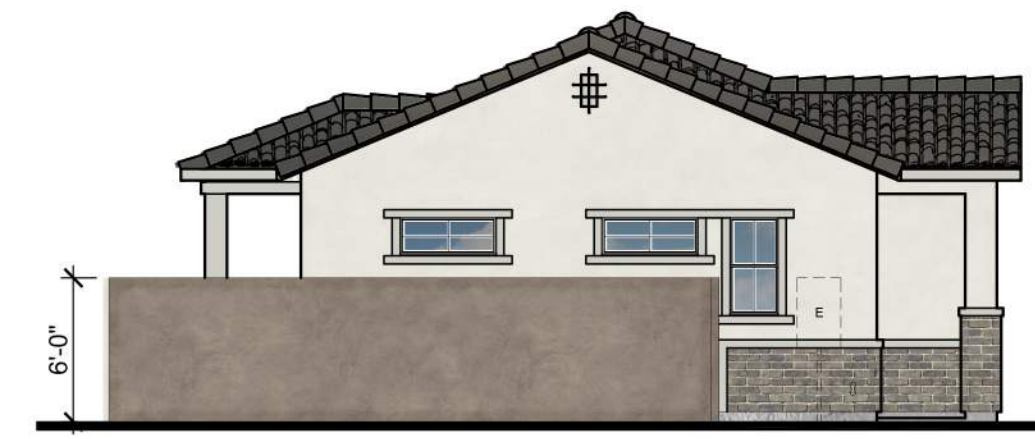
MATERIAL CALCULATION	
LEFT / RIGHT FACADE =	401 SQ. FT.
PRIMARY 1 MATERIAL = (STUCCO)	340 SQ. FT. = 85%
PRIMARY 2 MATERIAL = (BRICK VENEER)	61 SQ. FT. = 15%

COLOR SCHEME 3
BUILDING 1-1 | UNIT 1 | EVERGREEN AT HAWES | MESA, ARIZONA

1-10-2023



ALT RIGHT ELEVATION
ELEVATION A - SANTA BARBARA 1/8" = 1'-0"



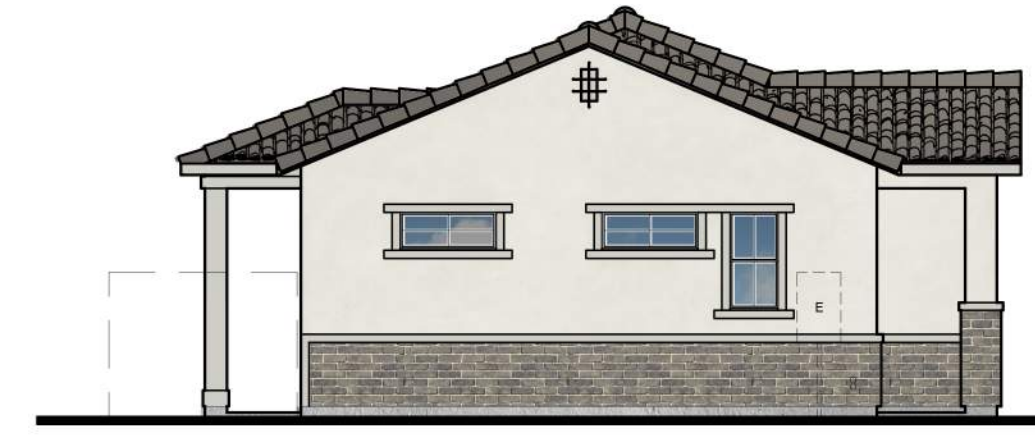
ALT LEFT ELEVATION
ELEVATION A - SANTA BARBARA 1/8" = 1'-0"



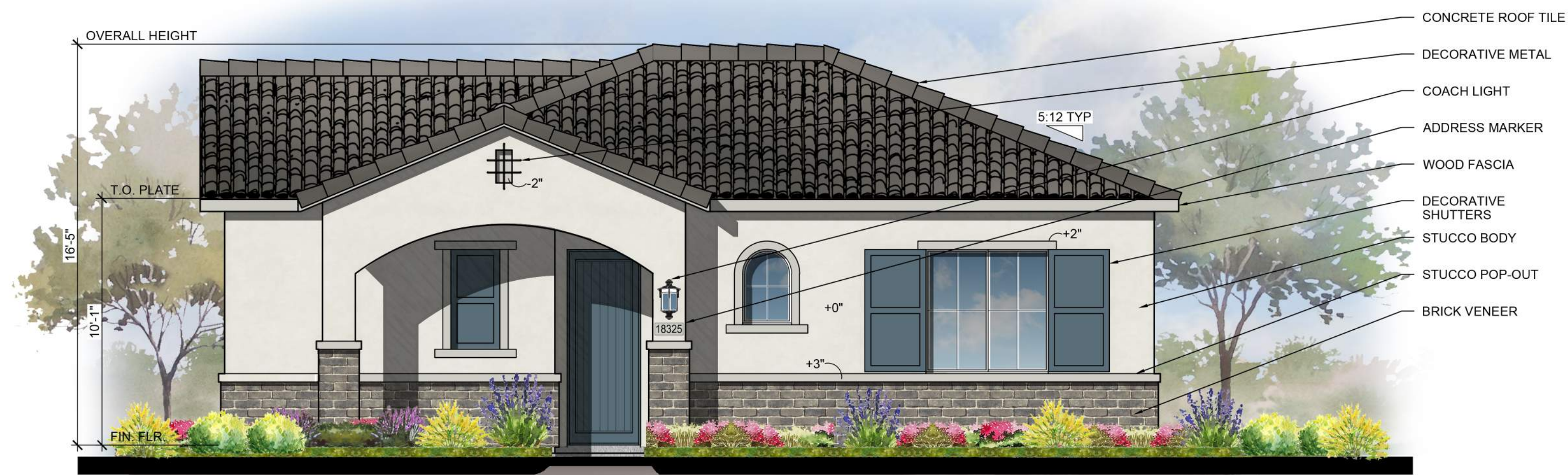
RIGHT ELEVATION
ELEVATION A - SANTA BARBARA 1/8" = 1'-0"



REAR ELEVATION
ELEVATION A - SANTA BARBARA 1/8" = 1'-0"



LEFT ELEVATION
ELEVATION A - SANTA BARBARA 1/8" = 1'-0"



FRONT ELEVATION
ELEVATION A - SANTA BARBARA 1/4" = 1'-0"

MATERIAL CALCULATION	
FRONT FACADE =	328 SQ. FT.
PRIMARY 1 MATERIAL = (STUCCO)	231 SQ. FT. = 70%
PRIMARY 2 MATERIAL = (BRICK VENEER)	97 SQ. FT. = 30%

MATERIAL CALCULATION	
LEFT FACADE =	357 SQ. FT.
PRIMARY 1 MATERIAL = (STUCCO)	279 SQ. FT. = 79%
PRIMARY 2 MATERIAL = (BRICK VENEER)	78 SQ. FT. = 21%

MATERIAL CALCULATION	
RIGHT FACADE =	292 SQ. FT.
PRIMARY 1 MATERIAL = (STUCCO)	212 SQ. FT. = 73%
PRIMARY 2 MATERIAL = (BRICK VENEER)	80 SQ. FT. = 27%

COLOR SCHEME 2

BUILDING 2 | UNIT 2 | EVERGREEN AT HAWES | MESA, ARIZONA

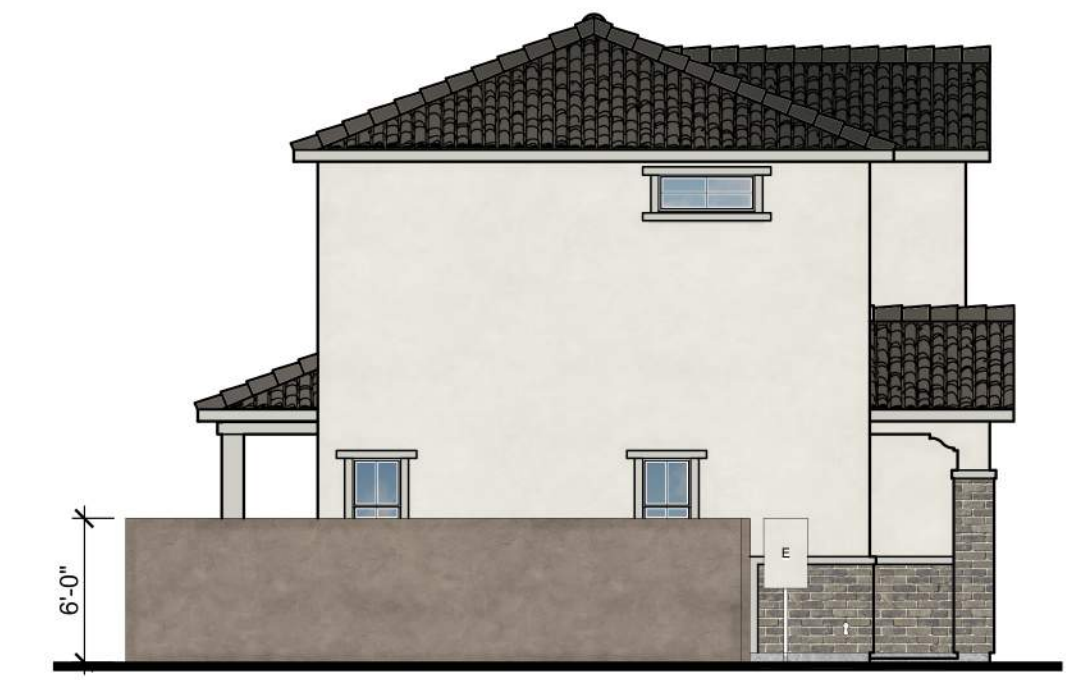
1-10-2023



RIGHT ELEVATION
ELEVATION A - SANTA BARBARA 1/8" = 1'-0"



REAR ELEVATION
ELEVATION A - SANTA BARBARA 1/8" = 1'-0"



ALT LEFT ELEVATION
ELEVATION A - SANTA BARBARA 1/8" = 1'-0"



LEFT ELEVATION
ELEVATION A - SANTA BARBARA 1/8" = 1'-0"



FRONT ELEVATION
ELEVATION A - SANTA BARBARA 1/4" = 1'-0"

- CONCRETE ROOF TILE
- WOOD FASCIA
- DECORATIVE SHUTTERS
- DECORATIVE METAL
- STUCCO BODY
- DECORATIVE CORBEL
- COACH LIGHT
- ADDRESS MARKER
- STUCCO POP-OUT
- BRICK VENEER

MATERIAL CALCULATION	
FRONT FACADE =	882 SQ. FT.
PRIMARY 1 MATERIAL = (STUCCO)	670 SQ. FT. = 76%
PRIMARY 2 MATERIAL = (BRICK VENEER)	212 SQ. FT. = 24%

MATERIAL CALCULATION	
LEFT / RIGHT FACADE =	550 SQ. FT.
PRIMARY 1 MATERIAL = (STUCCO)	442 SQ. FT. = 80%
PRIMARY 2 MATERIAL = (BRICK VENEER)	108 SQ. FT. = 20%

COLOR SCHEME 2

BUILDING 5-5 | UNIT 4 | EVERGREEN AT HAWES | MESA, ARIZONA

1-10-2023



ALT LEFT ELEVATION
ELEVATION A - SANTA BARBARA 1/8" = 1'-0"



RIGHT ELEVATION
ELEVATION A - SANTA BARBARA 1/8" = 1'-0"



REAR ELEVATION
ELEVATION A - SANTA BARBARA 1/8" = 1'-0"



LEFT ELEVATION
ELEVATION A - SANTA BARBARA 1/8" = 1'-0"



MATERIAL CALCULATION	
FRONT FACADE =	1011 SQ. FT.
PRIMARY 1 MATERIAL = (STUCCO)	763 SQ. FT. = 75%
PRIMARY 2 MATERIAL = (BRICK VENEER)	248 SQ. FT. = 25%

MATERIAL CALCULATION	
LEFT / RIGHT FACADE =	568 SQ. FT.
PRIMARY 1 MATERIAL = (STUCCO)	456 SQ. FT. = 80%
PRIMARY 2 MATERIAL = (BRICK VENEER)	112 SQ. FT. = 20%

COLOR SCHEME 1
BUILDING 6-6 | UNIT 5 | EVERGREEN AT HAWES | MESA, ARIZONA

1-10-2023



RIGHT ELEVATION
ELEVATION A - SANTA BARBARA 1/8" = 1'-0"



REAR ELEVATION
ELEVATION A - SANTA BARBARA 1/8" = 1'-0"



ALT LEFT ELEVATION
ELEVATION A - SANTA BARBARA 1/8" = 1'-0"



LEFT ELEVATION
ELEVATION A - SANTA BARBARA 1/8" = 1'-0"



FRONT ELEVATION
ELEVATION A - SANTA BARBARA 1/4" = 1'-0"

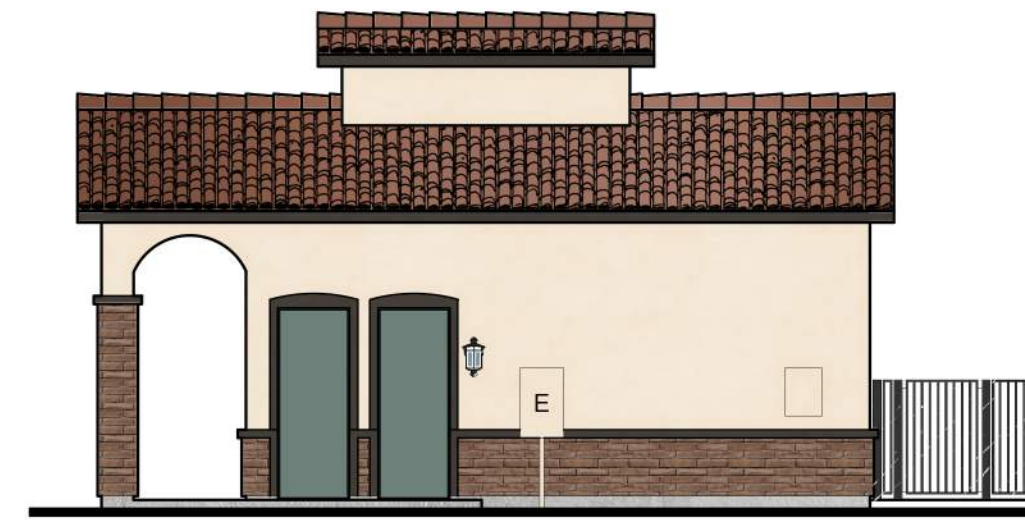
MATERIAL CALCULATION	
FRONT FACADE =	545 SQ. FT.
PRIMARY 1 MATERIAL = (STUCCO)	416 SQ. FT. = 76%
PRIMARY 2 MATERIAL = (BRICK VENEER)	129 SQ. FT. = 24%

MATERIAL CALCULATION	
LEFT / RIGHT FACADE =	597 SQ. FT.
PRIMARY 1 MATERIAL = (STUCCO)	449 SQ. FT. = 75%
PRIMARY 2 MATERIAL = (BRICK VENEER)	148 SQ. FT. = 25%

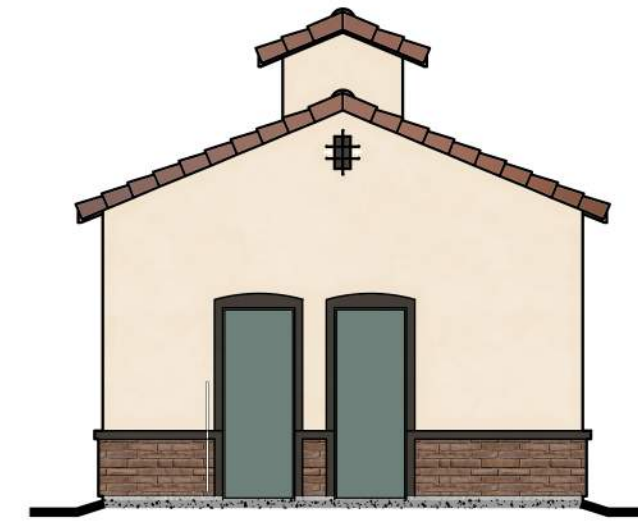
COLOR SCHEME 3

BUILDING 7-7 | UNIT 6 | EVERGREEN AT HAWES | MESA, ARIZONA

1-10-2023



RIGHT ELEVATION
ELEVATION A - SANTA BARBARA 1/8" = 1'-0"



REAR ELEVATION
ELEVATION A - SANTA BARBARA 1/8" = 1'-0"



LEFT ELEVATION
ELEVATION A - SANTA BARBARA 1/8" = 1'-0"



FRONT ELEVATION
ELEVATION A - SANTA BARBARA 1/4" = 1'-0"

MATERIAL CALCULATION	
FRONT FACADE =	232 SQ. FT.
PRIMARY 1 MATERIAL = (STUCCO)	173 SQ. FT. = 75%
PRIMARY 2 MATERIAL = (BRICK VENEER)	59 SQ. FT. = 25%

MATERIAL CALCULATION	
LEFT FACADE =	302 SQ. FT.
PRIMARY 1 MATERIAL = (STUCCO)	184 SQ. FT. = 61%
PRIMARY 2 MATERIAL = (BRICK VENEER AND TILE)	118 SQ. FT. = 39%

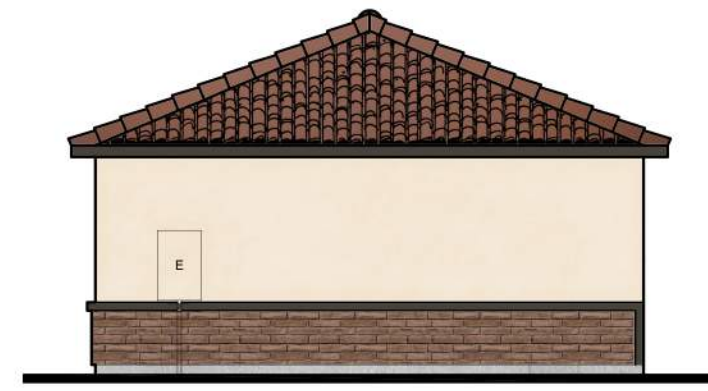
MATERIAL CALCULATION	
RIGHT FACADE =	289 SQ. FT.
PRIMARY 1 MATERIAL = (STUCCO)	230 SQ. FT. = 80%
PRIMARY 2 MATERIAL = (BRICK VENEER)	59 SQ. FT. = 20%

MATERIAL CALCULATION	
REAR FACADE =	242 SQ. FT.
PRIMARY 1 MATERIAL = (STUCCO)	211 SQ. FT. = 87%
PRIMARY 2 MATERIAL = (BRICK VENEER)	31 SQ. FT. = 13%

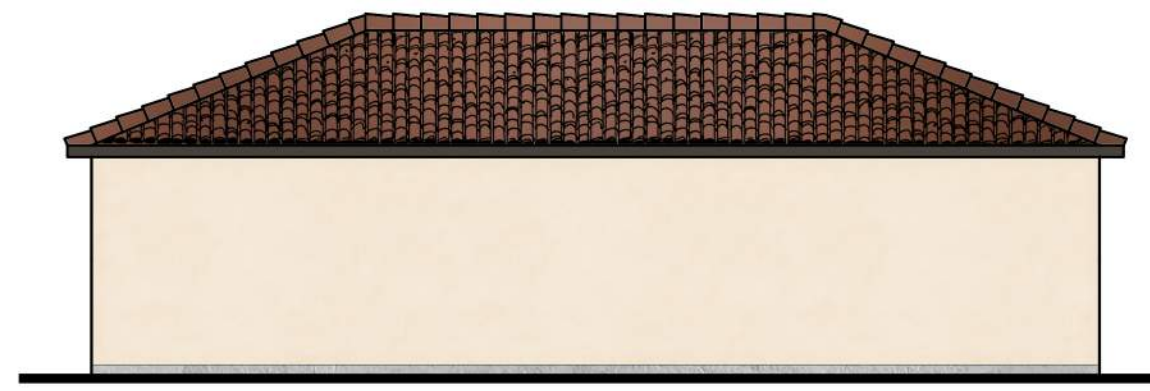
COLOR SCHEME 1

LEASING OFFICE | EVERGREEN AT HAWES | MESA, ARIZONA

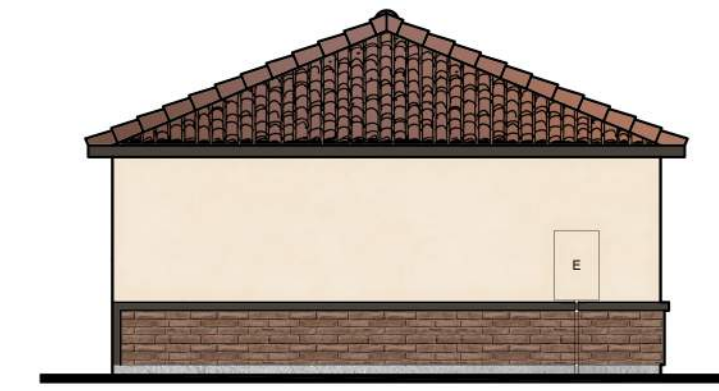
1-10-2023



ALT RIGHT ELEVATION
ELEVATION A - SANTA BARBARA 1/8" = 1'-0"



ALT REAR ELEVATION
ELEVATION A - SANTA BARBARA 1/8" = 1'-0"
(COMMON WALL AT RESIDENCE)



ALT LEFT ELEVATION
ELEVATION A - SANTA BARBARA 1/8" = 1'-0"



RIGHT ELEVATION
ELEVATION A - SANTA BARBARA 1/8" = 1'-0"



REAR ELEVATION
ELEVATION A - SANTA BARBARA 1/8" = 1'-0"



LEFT ELEVATION
ELEVATION A - SANTA BARBARA 1/8" = 1'-0"



FRONT ELEVATION
ELEVATION A - SANTA BARBARA 1/4" = 1'-0"

MATERIAL CALCULATION	
FRONT FACADE =	402 SQ. FT.
PRIMARY 1 MATERIAL = (STUCCO)	152 SQ. FT. = 39%
PRIMARY 2 MATERIAL = (BRICK VENEER AND GARAGE DOORS)	251 SQ. FT. = 61%

MATERIAL CALCULATION	
LEFT / RIGHT FACADE =	210 SQ. FT.
PRIMARY 1 MATERIAL = (STUCCO)	158 SQ. FT. = 75%
PRIMARY 2 MATERIAL = (BRICK VENEER)	52 SQ. FT. = 25%

MATERIAL CALCULATION	
REAR FACADE =	386 SQ. FT.
PRIMARY 1 MATERIAL = (STUCCO)	291 SQ. FT. = 75%
PRIMARY 2 MATERIAL = (BRICK VENEER)	95 SQ. FT. = 25%

COLOR SCHEME 1
GARAGE | EVERGREEN AT HAWES | MESA, ARIZONA

1-10-2023



EVERGREEN
INVESTMENT COMPANY

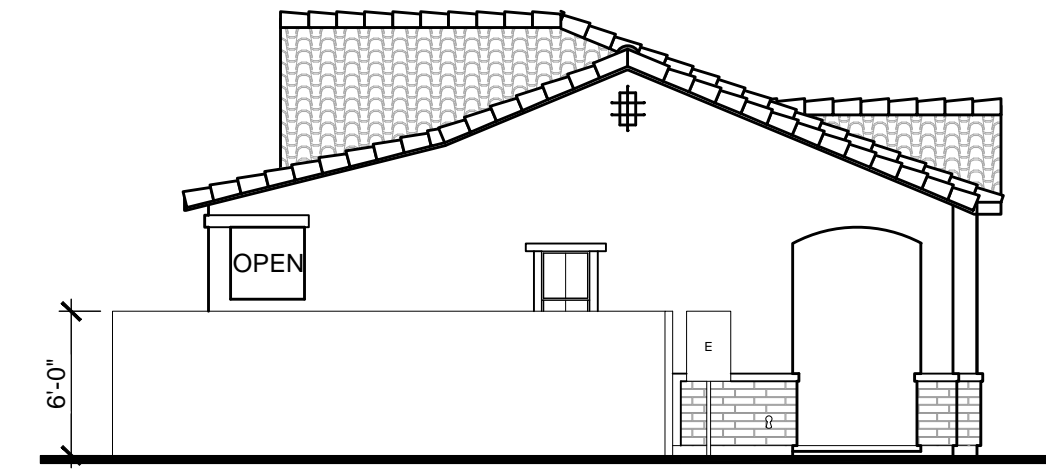
600 Wission Way East Suite C-247 Bunkerside Island, WA 98110
(206) 297-5000 info@evergreeninvest.com

FELTENGROUP

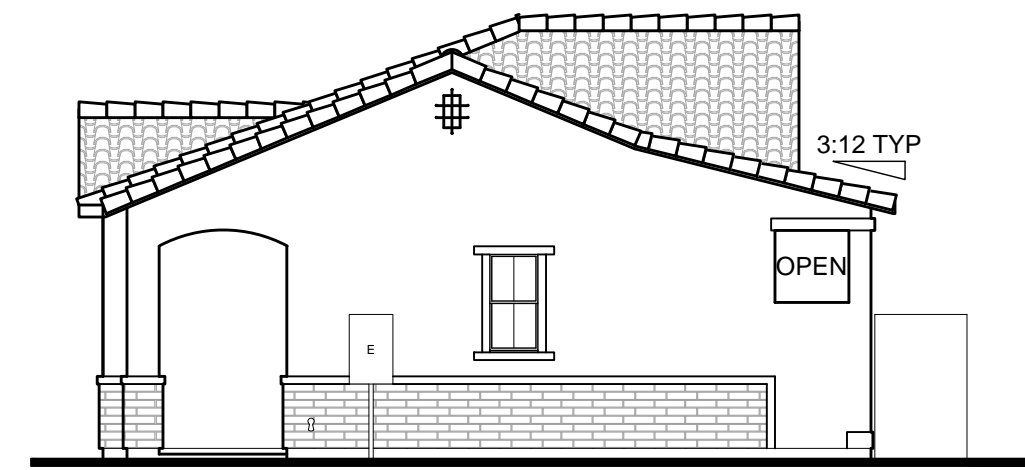
PHONE: 602.867.2500 WWW.FELTENGROUP.COM

www.feltengroup.com

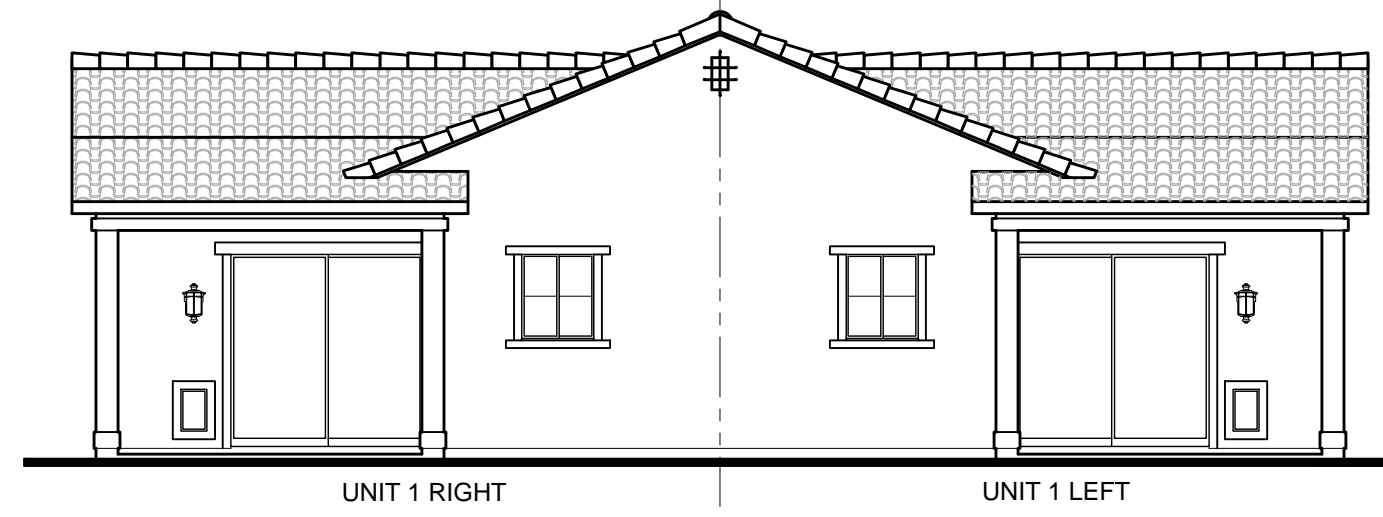
copyright 2023



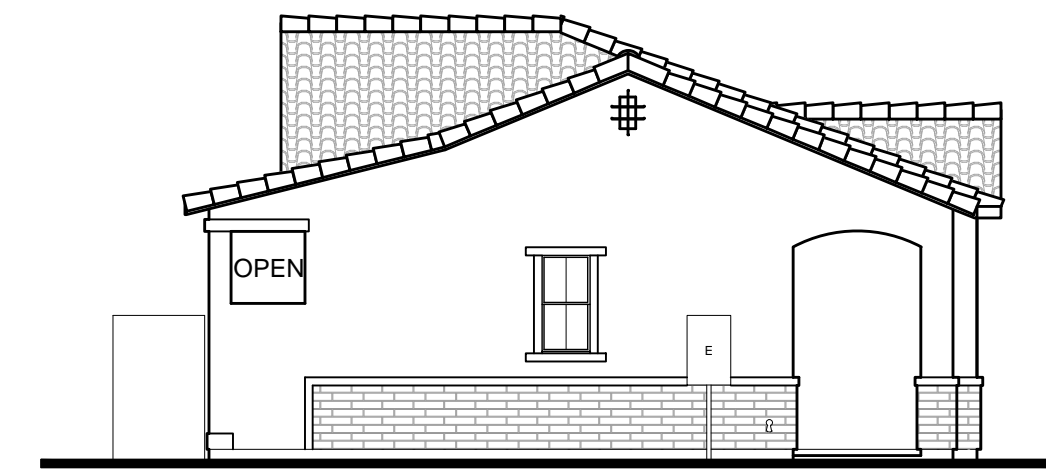
ALT LEFT / RIGHT ELEVATION
ELEVATION A - SANTA BARBARA 1/8" = 1'-0"



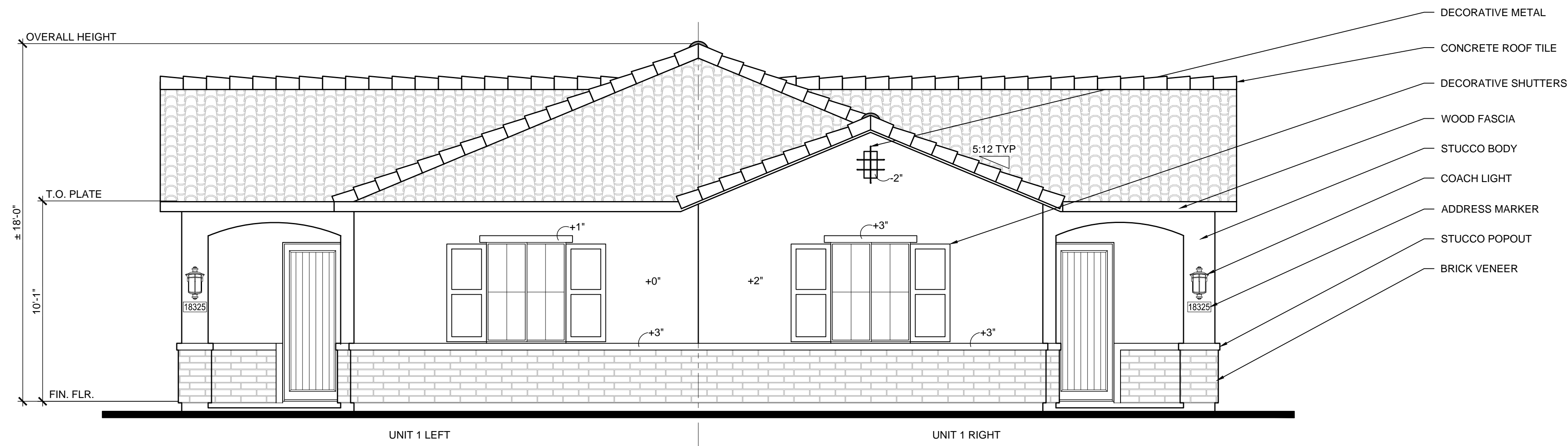
RIGHT ELEVATION
ELEVATION A - SANTA BARBARA 1/8" = 1'-0"



REAR ELEVATION
ELEVATION A - SANTA BARBARA 1/8" = 1'-0"



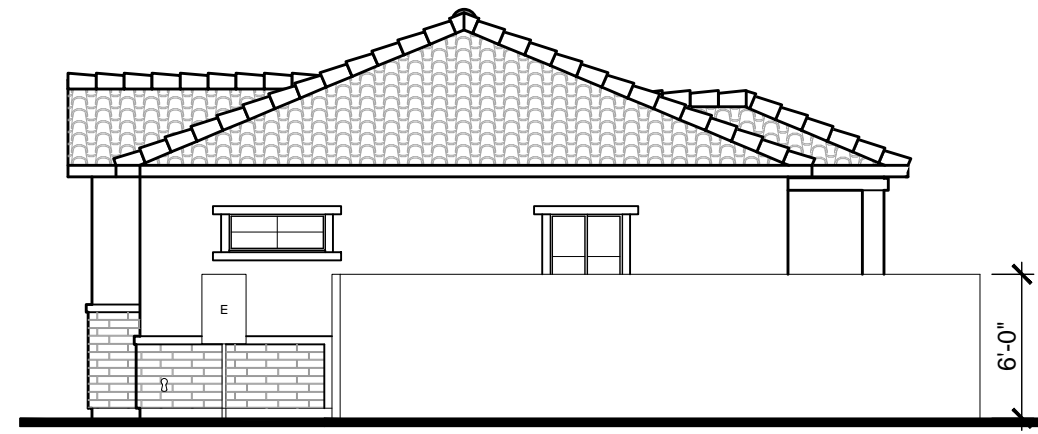
LEFT ELEVATION
ELEVATION A - SANTA BARBARA 1/8" = 1'-0"



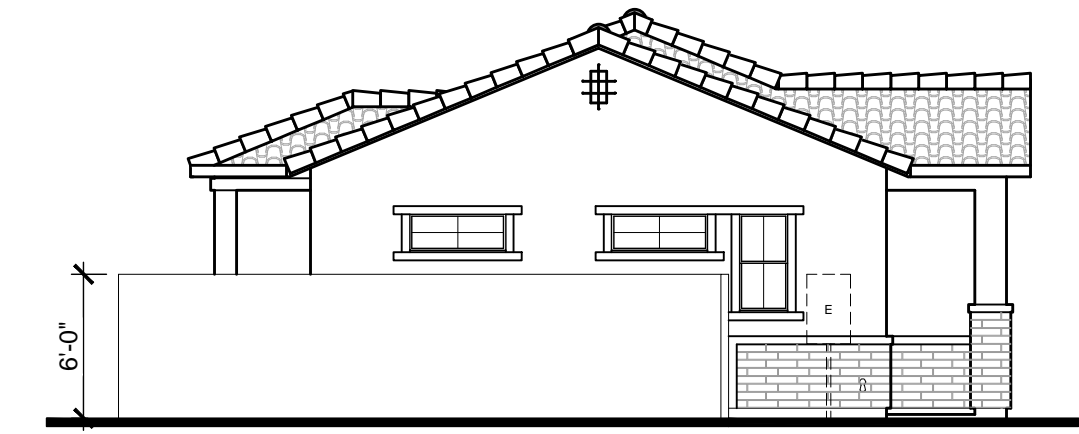
FRONT ELEVATION
ELEVATION A - SANTA BARBARA 1/4" = 1'-0"

MATERIAL CALCULATION	
FRONT FACADE =	458 SQ. FT.
PRIMARY 1 MATERIAL = (STUCCO)	338 SQ. FT. = 74%
PRIMARY 2 MATERIAL = (BRICK VENEER)	123 SQ. FT. = 26%

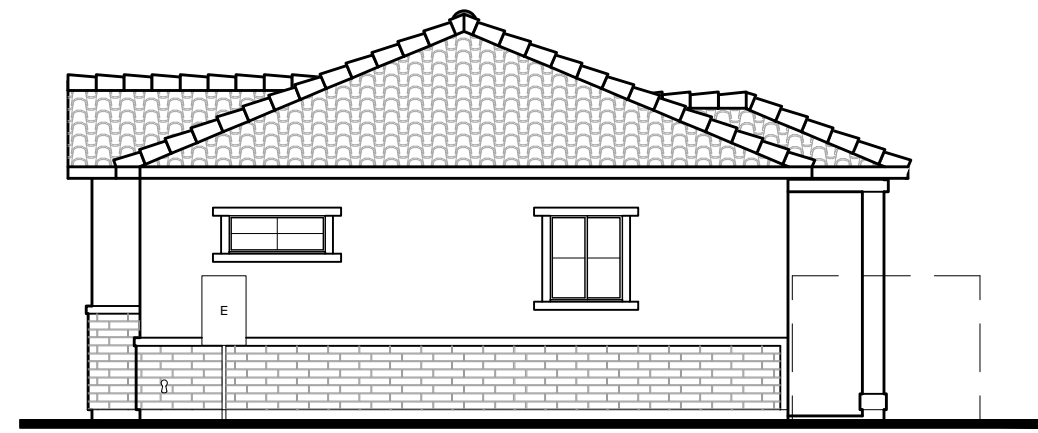
MATERIAL CALCULATION	
LEFT / RIGHT FACADE =	401 SQ. FT.
PRIMARY 1 MATERIAL = (STUCCO)	340 SQ. FT. = 85%
PRIMARY 2 MATERIAL = (BRICK VENEER)	61 SQ. FT. = 15%



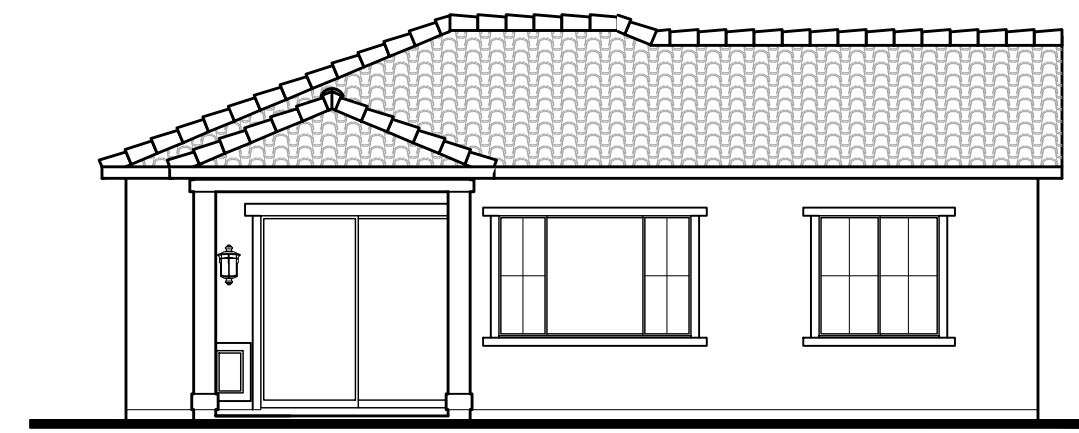
ALT RIGHT ELEVATION
ELEVATION A - SANTA BARBARA 1/8" = 1'-0"



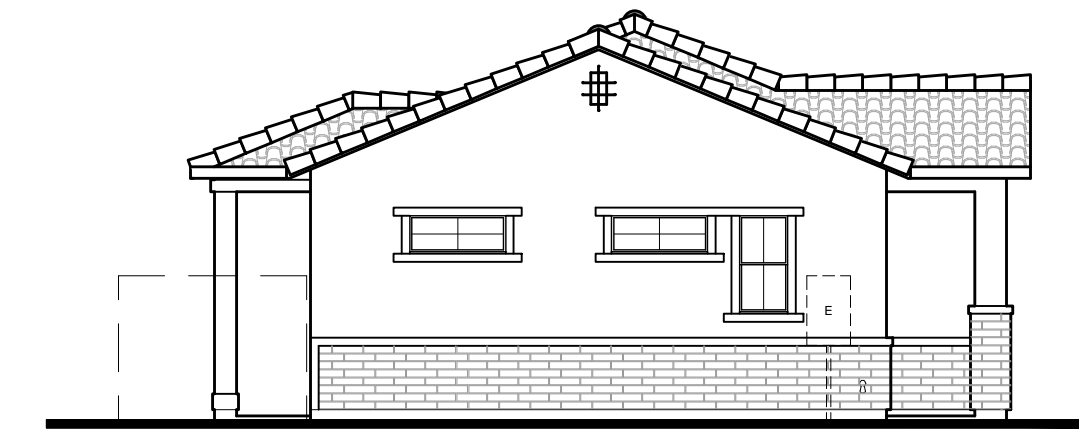
ALT LEFT ELEVATION
ELEVATION A - SANTA BARBARA 1/8" = 1'-0"



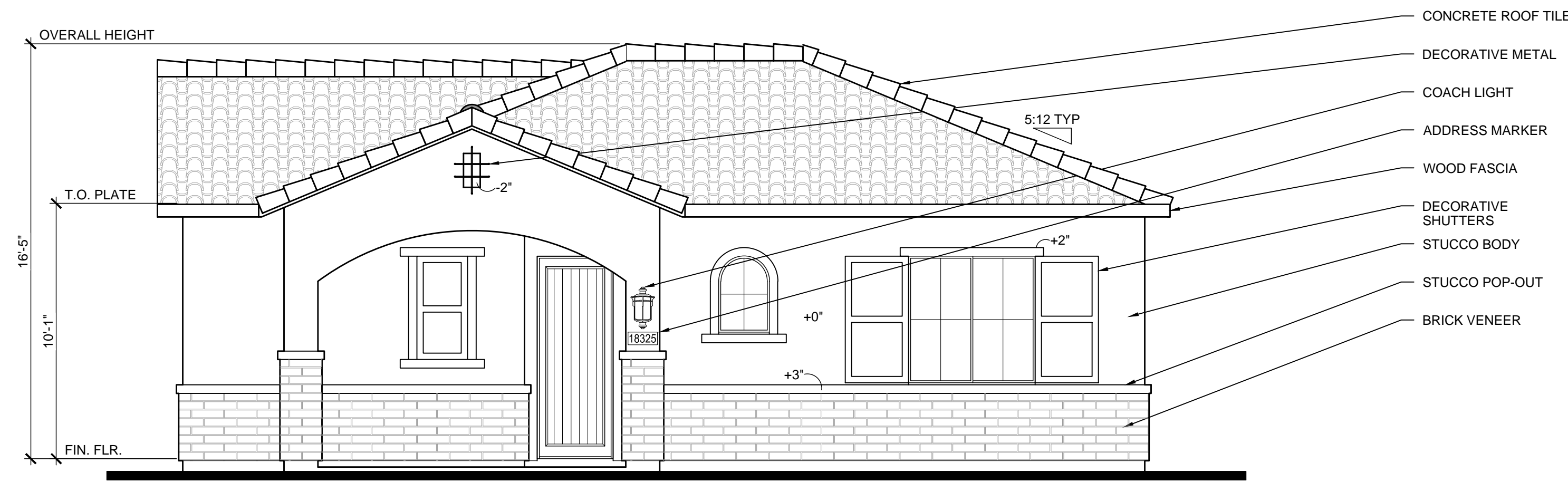
RIGHT ELEVATION
ELEVATION A - SANTA BARBARA 1/8" = 1'-0"



REAR ELEVATION
ELEVATION A - SANTA BARBARA 1/8" = 1'-0"



LEFT ELEVATION
ELEVATION A - SANTA BARBARA 1/8" = 1'-0"



FRONT ELEVATION
ELEVATION A - SANTA BARBARA 1/4" = 1'-0"

MATERIAL CALCULATION	
FRONT FACADE =	328 SQ. FT.
PRIMARY 1 MATERIAL = (STUCCO)	231 SQ. FT. = 70%
PRIMARY 2 MATERIAL = (BRICK VENEER)	97 SQ. FT. = 30%

MATERIAL CALCULATION	
LEFT FACADE =	357 SQ. FT.
PRIMARY 1 MATERIAL = (STUCCO)	279 SQ. FT. = 79%
PRIMARY 2 MATERIAL = (BRICK VENEER)	79 SQ. FT. = 21%

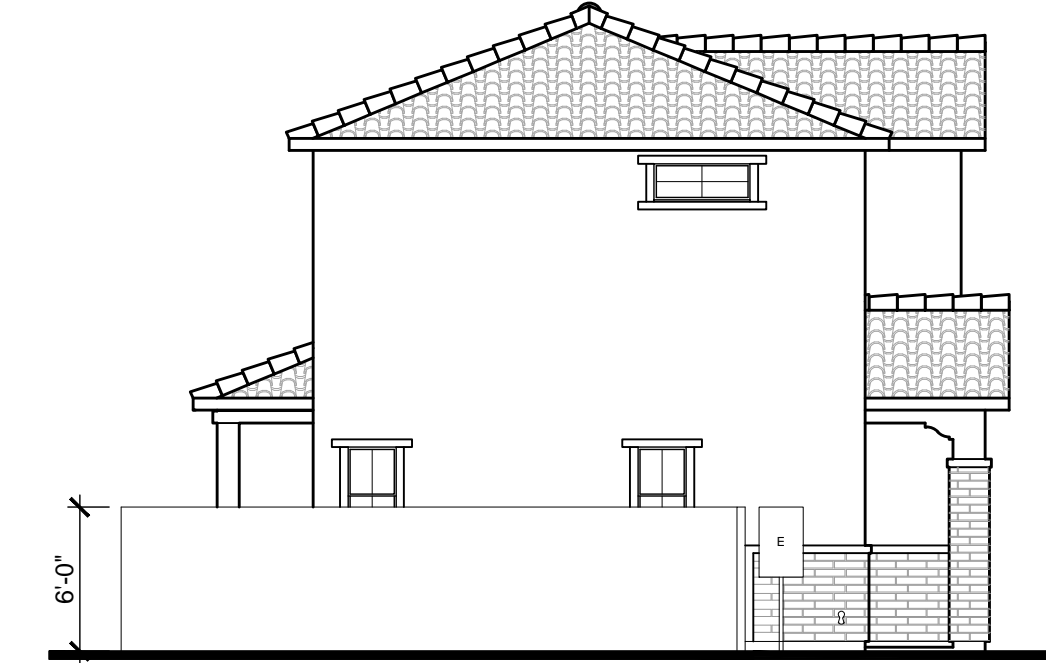
MATERIAL CALCULATION	
RIGHT FACADE =	292 SQ. FT.
PRIMARY 1 MATERIAL = (STUCCO)	212 SQ. FT. = 73%
PRIMARY 2 MATERIAL = (BRICK VENEER)	80 SQ. FT. = 27%



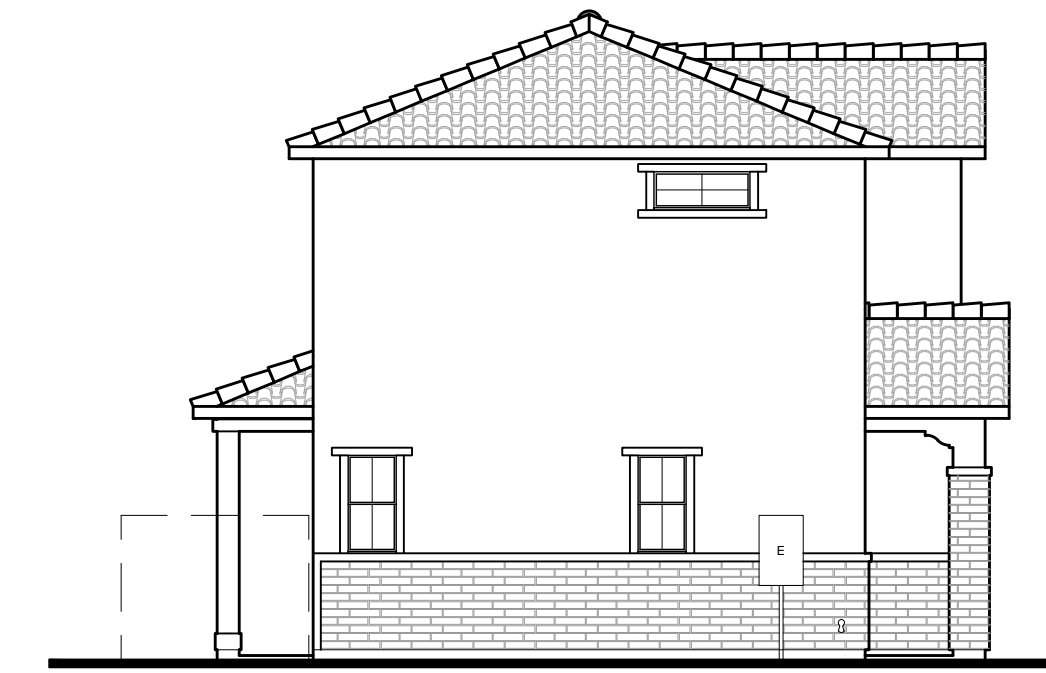
RIGHT ELEVATION
ELEVATION A - SANTA BARBARA 1/8" = 1'-0"



REAR ELEVATION
ELEVATION A - SANTA BARBARA 1/8" = 1'-0"



ALT LEFT ELEVATION
ELEVATION A - SANTA BARBARA 1/8" = 1'-0"



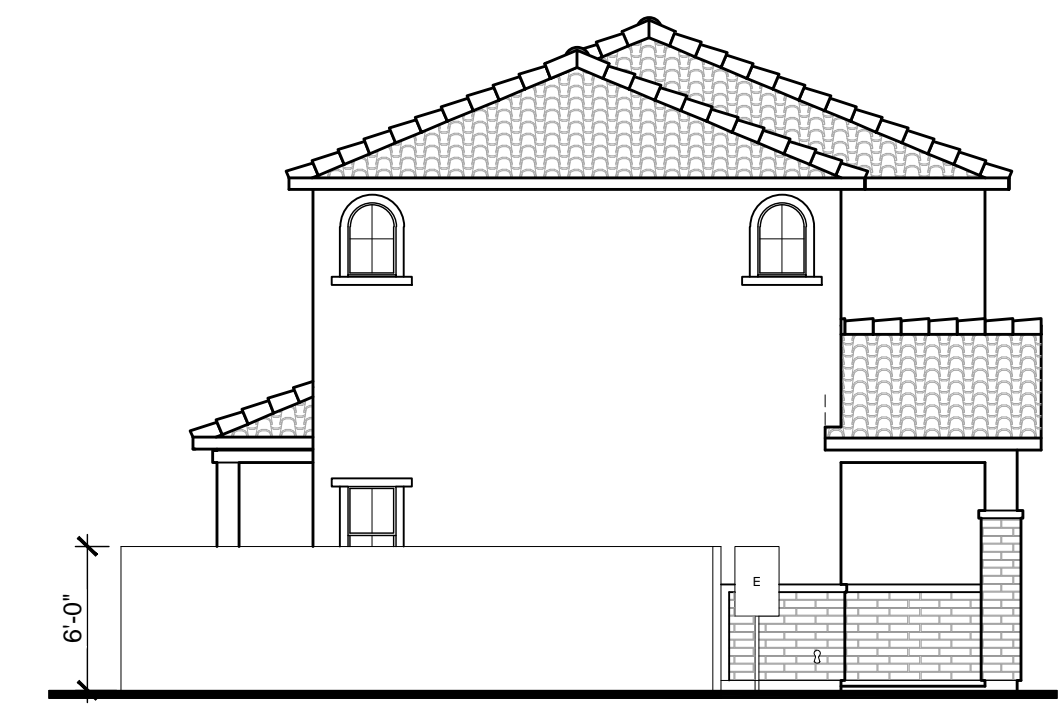
LEFT ELEVATION
ELEVATION A - SANTA BARBARA 1/8" = 1'-0"



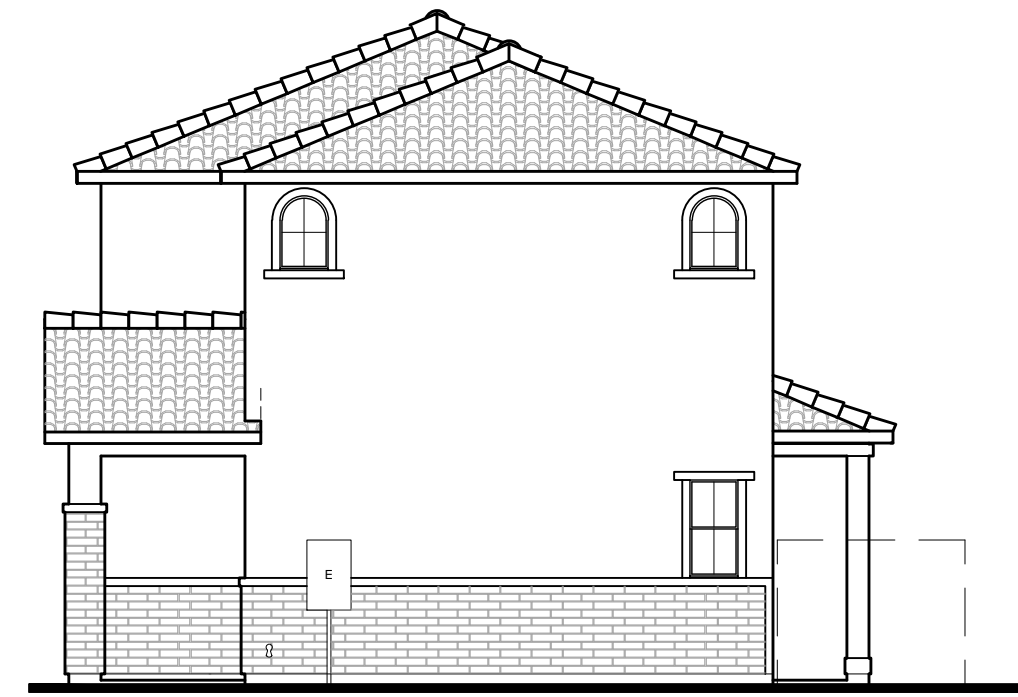
FRONT ELEVATION
ELEVATION A - SANTA BARBARA 1/4" = 1'-0"

MATERIAL CALCULATION	
FRONT FACADE =	882 SQ. FT.
PRIMARY 1 MATERIAL = (STUCCO)	670 SQ. FT. = 76%
PRIMARY 2 MATERIAL = (BRICK VENEER)	212 SQ. FT. = 24%

MATERIAL CALCULATION	
LEFT / RIGHT FACADE =	550 SQ. FT.
PRIMARY 1 MATERIAL = (STUCCO)	442 SQ. FT. = 80%
PRIMARY 2 MATERIAL = (BRICK VENEER)	108 SQ. FT. = 20%



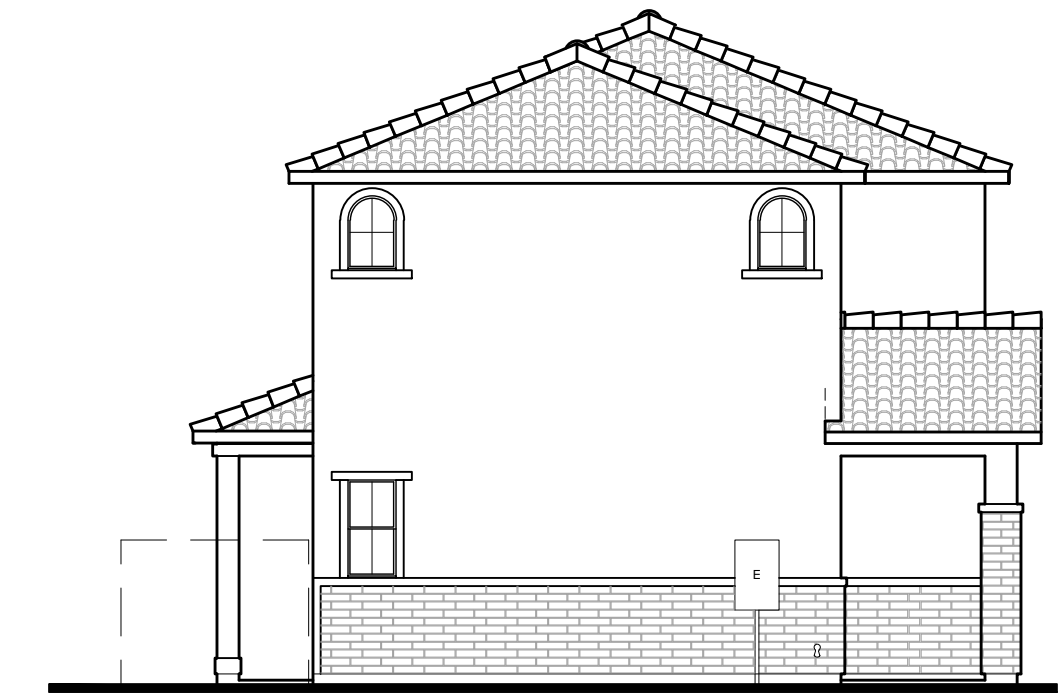
ALT LEFT ELEVATION
ELEVATION A - SANTA BARBARA 1/8" = 1'-0"



RIGHT ELEVATION
ELEVATION A - SANTA BARBARA 1/8" = 1'-0"



REAR ELEVATION
ELEVATION A - SANTA BARBARA 1/8" = 1'-0"



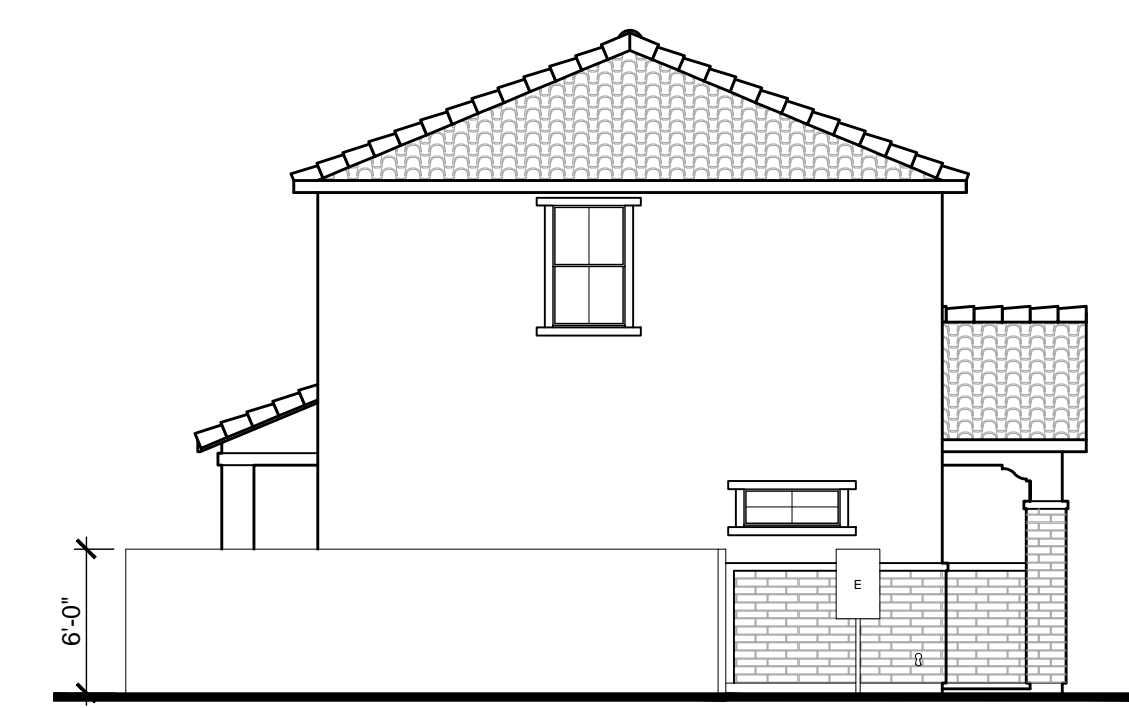
LEFT ELEVATION
ELEVATION A - SANTA BARBARA 1/8" = 1'-0"



FRONT ELEVATION
ELEVATION A - SANTA BARBARA 1/4" = 1'-0"

MATERIAL CALCULATION	
FRONT FACADE =	1011 SQ. FT.
PRIMARY 1 MATERIAL = (STUCCO)	763 SQ. FT. = 75%
PRIMARY 2 MATERIAL = (BRICK VENEER)	248 SQ. FT. = 25%

MATERIAL CALCULATION	
LEFT / RIGHT FACADE =	568 SQ. FT.
PRIMARY 1 MATERIAL = (STUCCO)	456 SQ. FT. = 80%
PRIMARY 2 MATERIAL = (BRICK VENEER)	112 SQ. FT. = 20%



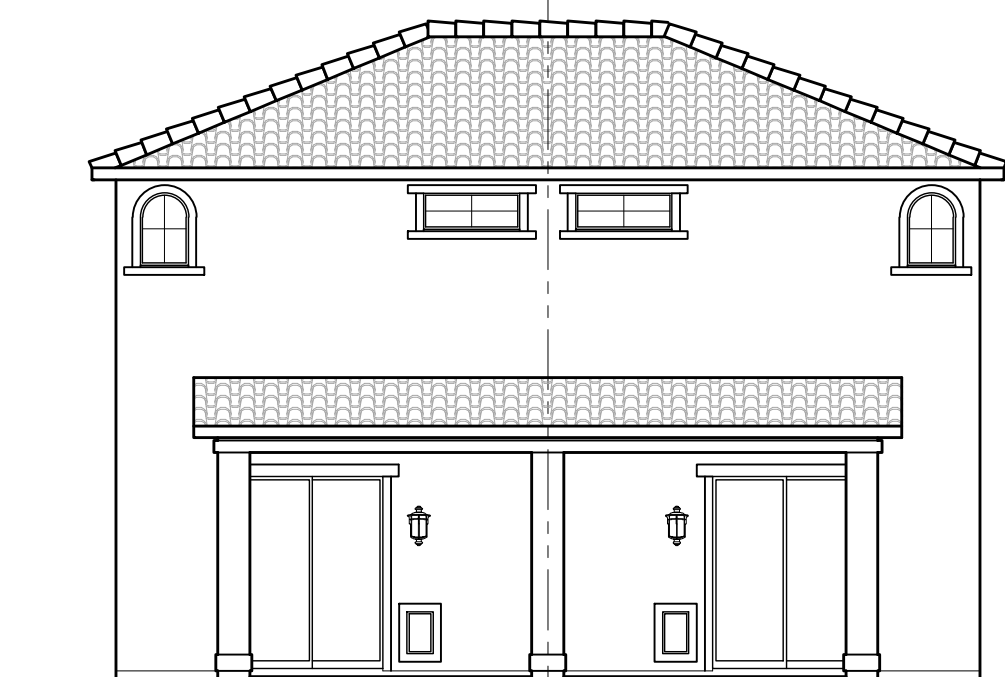
ALT LEFT ELEVATION
ELEVATION A - SANTA BARBARA 1/8" = 1'-0"



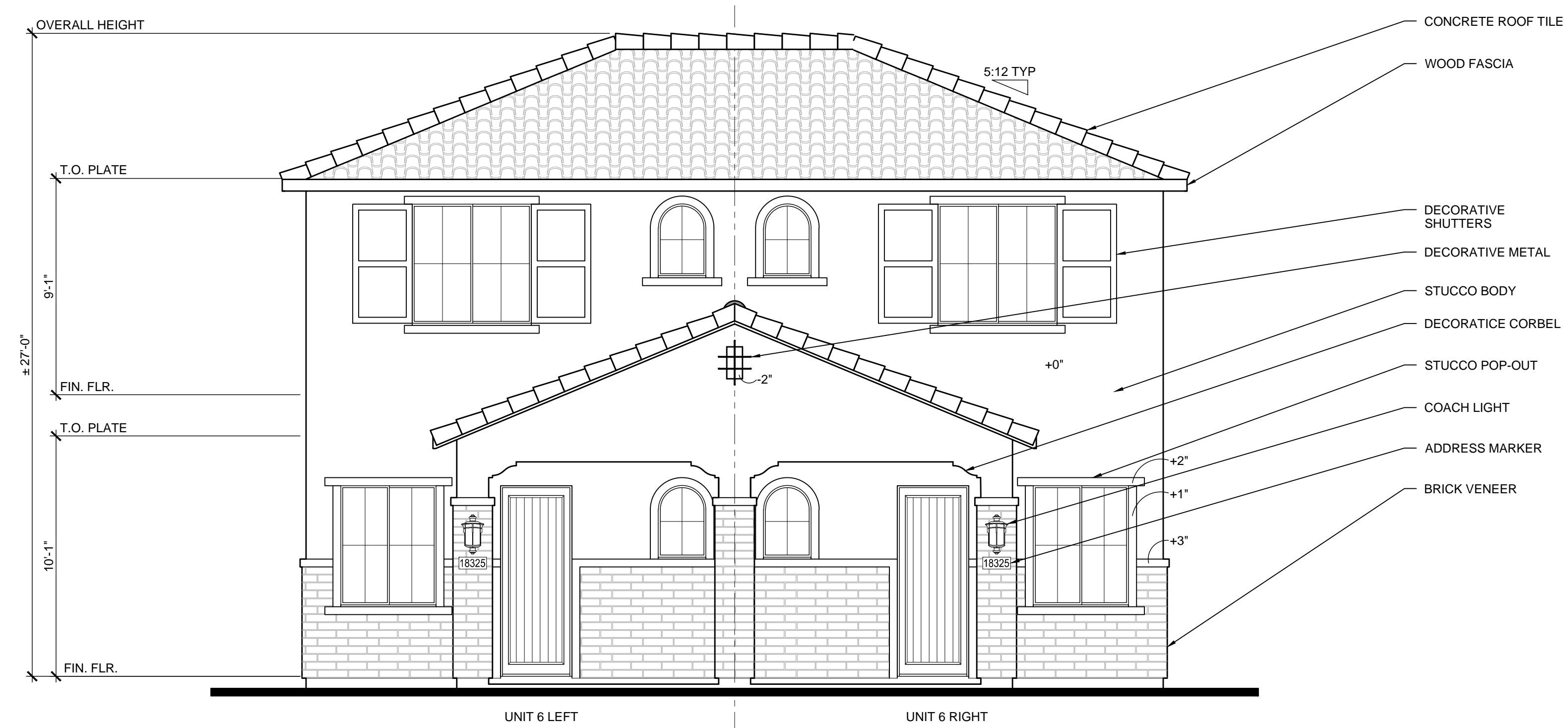
LEFT ELEVATION
ELEVATION A - SANTA BARBARA 1/8" = 1'-0"



RIGHT ELEVATION
ELEVATION A - SANTA BARBARA 1/8" = 1'-0"



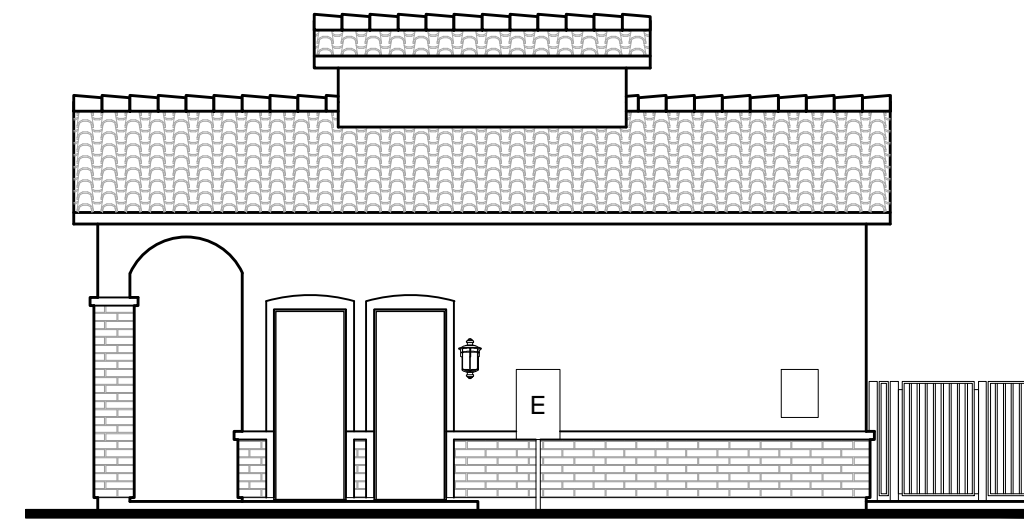
REAR ELEVATION
ELEVATION A - SANTA BARBARA 1/8" = 1'-0"



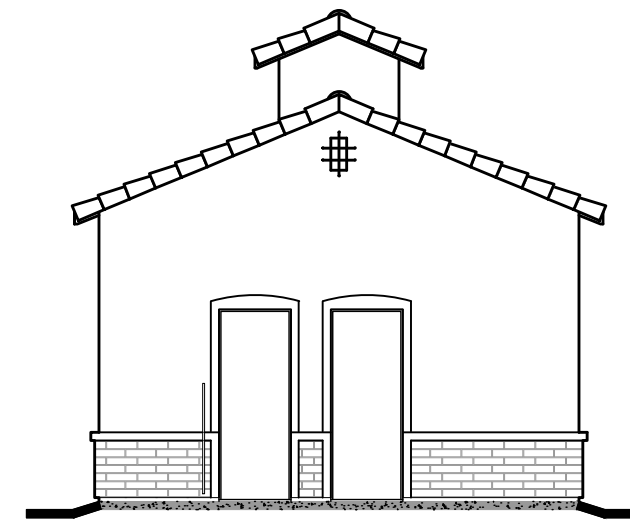
FRONT ELEVATION
ELEVATION A - SANTA BARBARA 1/4" = 1'-0"

MATERIAL CALCULATION	
FRONT FACADE =	545 SQ. FT.
PRIMARY 1 MATERIAL = (STUCCO)	416 SQ. FT. = 76%
PRIMARY 2 MATERIAL = (BRICK VENEER)	129 SQ. FT. = 24%

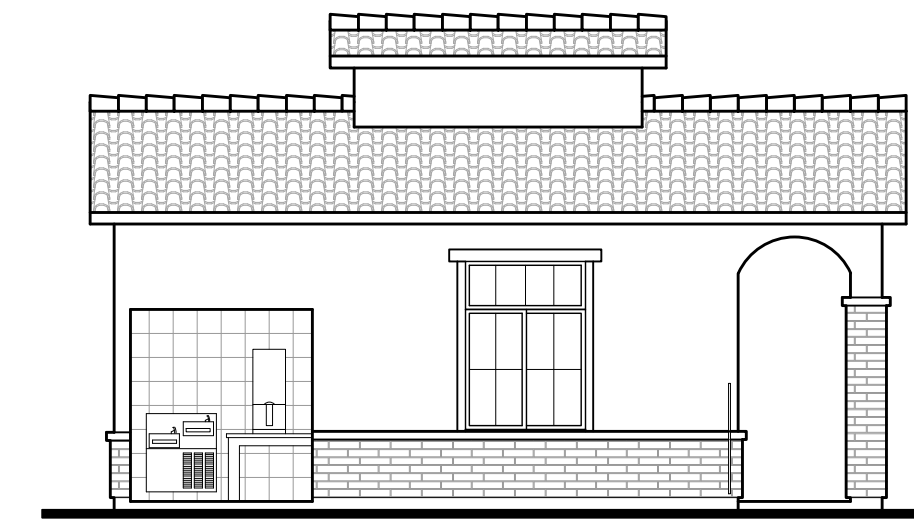
MATERIAL CALCULATION	
LEFT / RIGHT FACADE =	597 SQ. FT.
PRIMARY 1 MATERIAL = (STUCCO)	449 SQ. FT. = 75%
PRIMARY 2 MATERIAL = (BRICK VENEER)	148 SQ. FT. = 25%



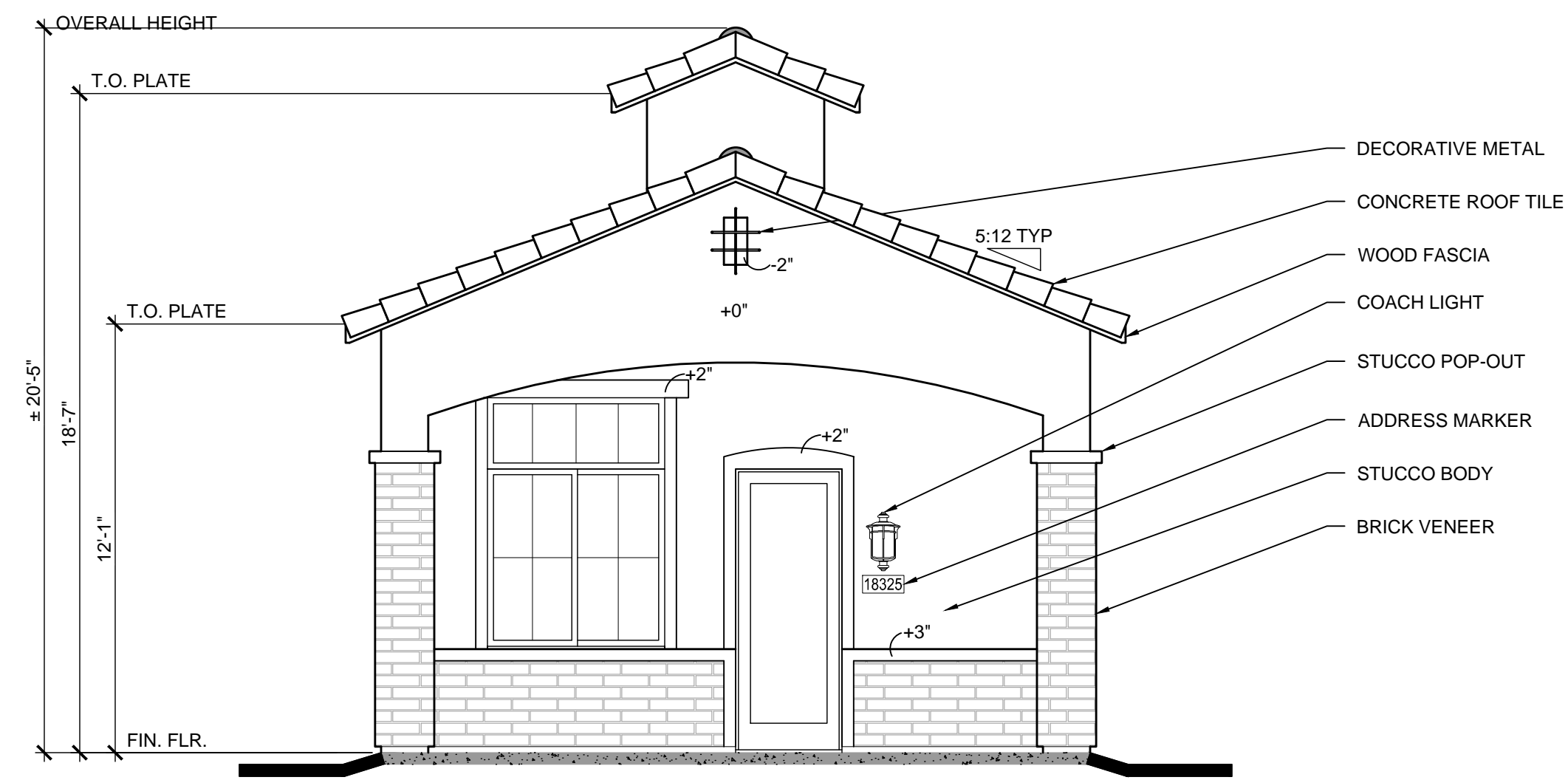
RIGHT ELEVATION
ELEVATION A - SANTA BARBARA 1/8" = 1'-0"



REAR ELEVATION
ELEVATION A - SANTA BARBARA 1/8" = 1'-0"



LEFT ELEVATION
ELEVATION A - SANTA BARBARA 1/8" = 1'-0"



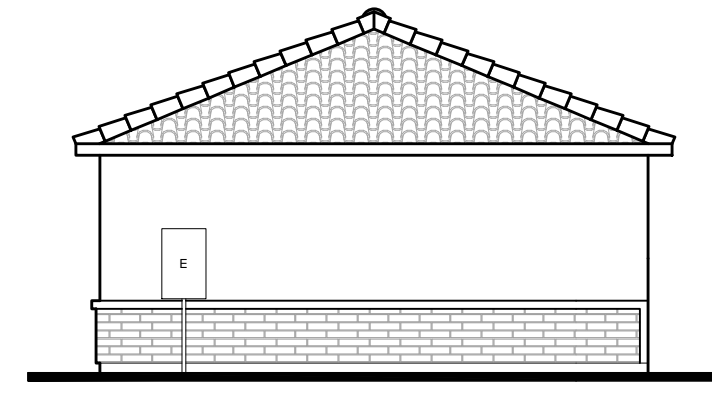
FRONT ELEVATION
ELEVATION A - SANTA BARBARA 1/4" = 1'-0"

MATERIAL CALCULATION	
FRONT FACADE =	232 SQ. FT.
PRIMARY 1 MATERIAL = (STUCCO)	173 SQ. FT. = 75%
PRIMARY 2 MATERIAL = (BRICK VENEER)	59 SQ. FT. = 25%

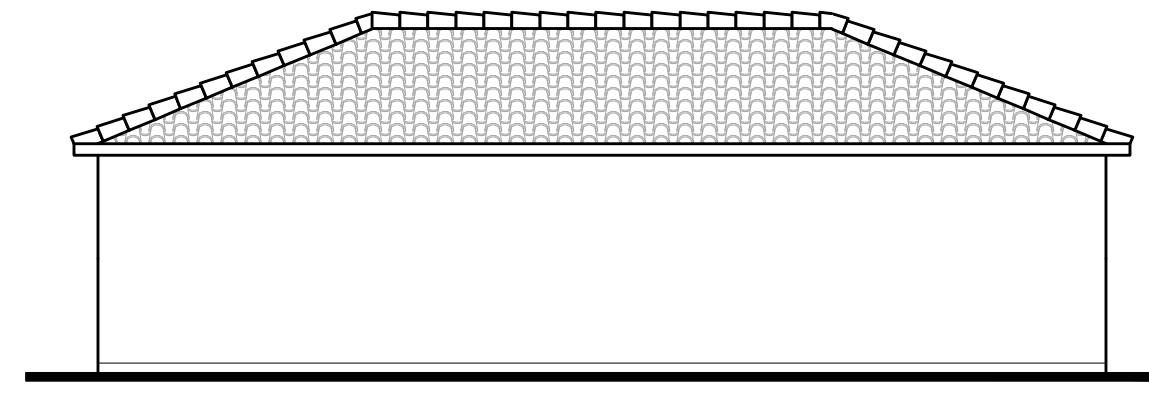
MATERIAL CALCULATION	
LEFT FACADE =	302 SQ. FT.
PRIMARY 1 MATERIAL = (STUCCO)	184 SQ. FT. = 61%
PRIMARY 2 MATERIAL = (BRICK VENEER AND TILE)	118 SQ. FT. = 39%

MATERIAL CALCULATION	
RIGHT FACADE =	289 SQ. FT.
PRIMARY 1 MATERIAL = (STUCCO)	230 SQ. FT. = 80%
PRIMARY 2 MATERIAL = (BRICK VENEER)	59 SQ. FT. = 20%

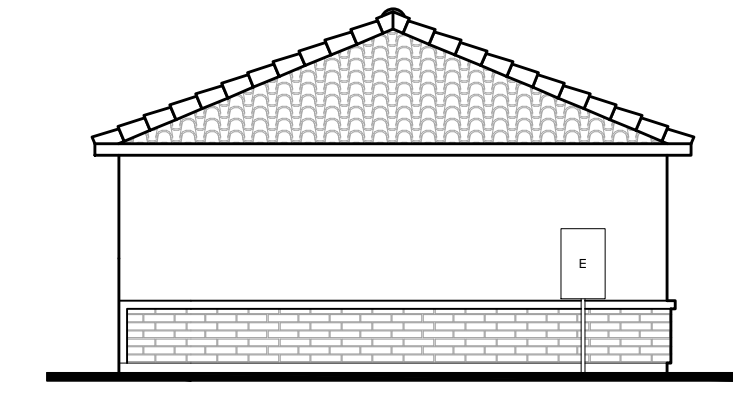
MATERIAL CALCULATION	
REAR FACADE =	242 SQ. FT.
PRIMARY 1 MATERIAL = (STUCCO)	211 SQ. FT. = 87%
PRIMARY 2 MATERIAL = (BRICK VENEER)	31 SQ. FT. = 13%



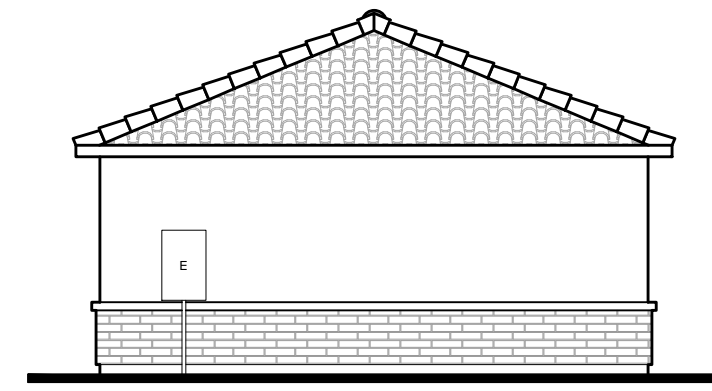
ALT RIGHT ELEVATION
ELEVATION A - SANTA BARBARA 1/8" = 1'-0"



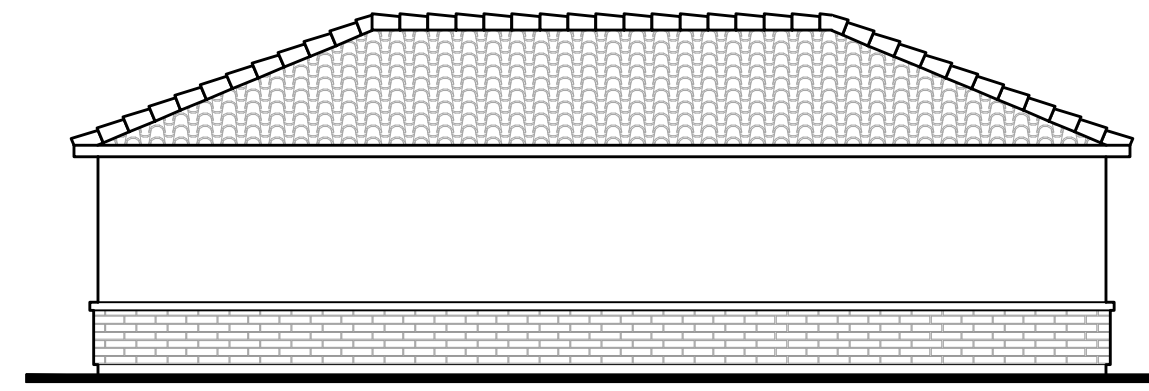
ALT REAR ELEVATION
ELEVATION A - SANTA BARBARA
(COMMON WALL AT RESIDENCE) 1/8" = 1'-0"



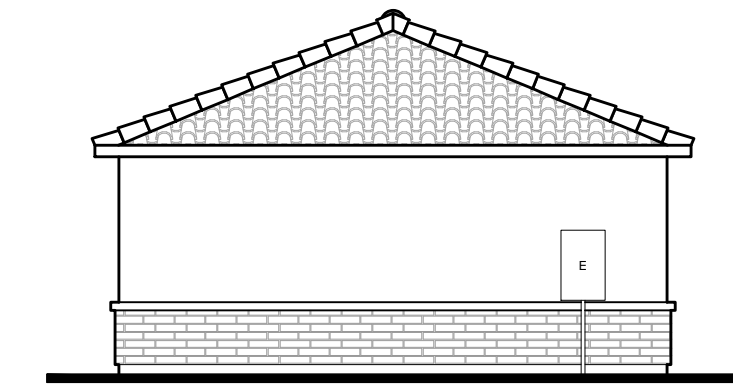
ALT LEFT ELEVATION
ELEVATION A - SANTA BARBARA 1/8" = 1'-0"



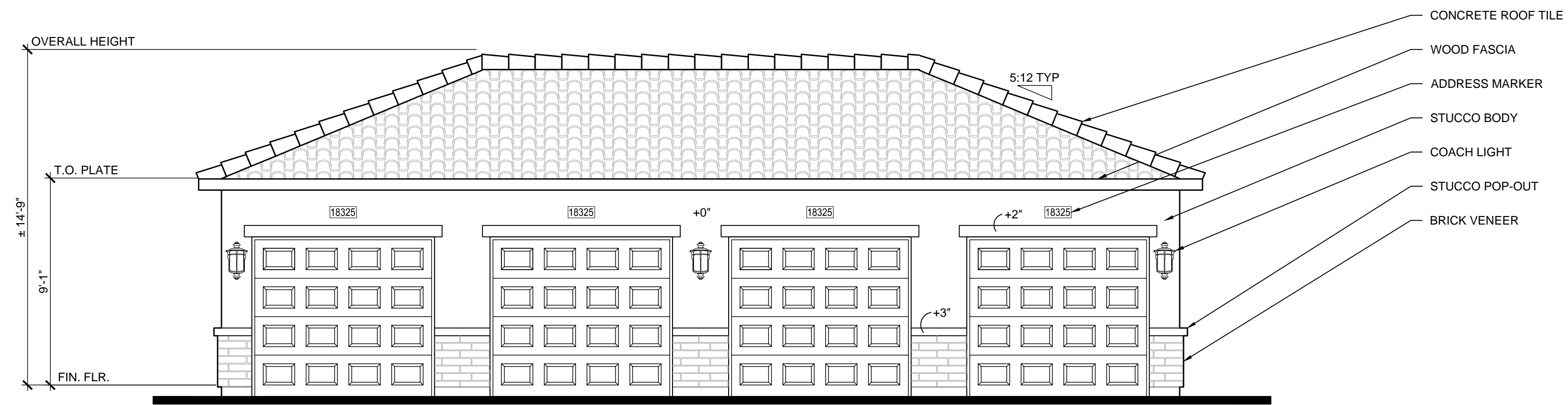
RIGHT ELEVATION
ELEVATION A - SANTA BARBARA 1/8" = 1'-0"



REAR ELEVATION
ELEVATION A - SANTA BARBARA 1/8" = 1'-0"



LEFT ELEVATION
ELEVATION A - SANTA BARBARA 1/8" = 1'-0"



FRONT ELEVATION
ELEVATION A - SANTA BARBARA 1/4" = 1'-0"

- CONCRETE ROOF TILE
- WOOD FASCIA
- ADDRESS MARKER
- STUCCO BODY
- COACH LIGHT
- STUCCO POP-OUT
- BRICK VENEER

MATERIAL CALCULATION	
FRONT FACADE =	402 SQ. FT.
PRIMARY 1 MATERIAL = (STUCCO)	152 SQ. FT. = 39%
PRIMARY 2 MATERIAL = (BRICK VENEER AND GARAGE DOORS)	251 SQ. FT. = 61%

MATERIAL CALCULATION	
LEFT / RIGHT FACADE =	210 SQ. FT.
PRIMARY 1 MATERIAL = (STUCCO)	158 SQ. FT. = 75%
PRIMARY 2 MATERIAL = (BRICK VENEER)	52 SQ. FT. = 25%

MATERIAL CALCULATION	
REAR FACADE =	386 SQ. FT.
PRIMARY 1 MATERIAL = (STUCCO)	291 SQ. FT. = 75%
PRIMARY 2 MATERIAL = (BRICK VENEER)	95 SQ. FT. = 25%

GARAGE | EVERGREEN AT HAWES | MESA, ARIZONA

1-10-2023