

FRONT ELEVATION

COLOR / MATERIAL SCHEDULE

COLOR MATERIAL NUMBER	LOCATION	MATERIAL	COLOR	COLOR MATERIAL % OF 3,440 ⌘	COLOR MATERIAL NUMBER	LOCATION	MATERIAL	COLOR	COLOR MATERIAL % OF 3,440 ⌘
01	MAIN BODY -	EIFS STUCCO SYSTEM	MEGA GREIGE (SW 7031)	1,714 ⌘ (50%)	04	FASCIA, BEAMS -	WOOD	IRON ORE (SW 7069)	267 ⌘ (8%)
02	ACCENT -	STUCCO SYSTEM	BRAINSTORM BRONZE (SW 7033)	760 ⌘ (22%)		PATIO COVER -	STEEL/ALUMA-WOOD		192 ⌘ (6%)
	POP-OUTS -	STUCCO SYSTEM OVER FOAM POP-OUT EIFS STUCCO SYSTEM				DOORS -	WOOD/GLASS		*57 ⌘
03	ACCENT -	SHIP-LAP ENGINEERED WOOD SIDING	LIGHT ASH	201 ⌘ (7%)		05	WINDOWS -	VINYL WINDOW SYSTEM	BLACK
					06	ROOFING -	OWENS CORNING ARCH. SHINGLES	OAKRIDGE ESTATE GRAY	* 3,000 ⌘
* REMOVED FROM SQ. FT./PERCENTAGE OF COLORS/MATERIAL FINISHES									

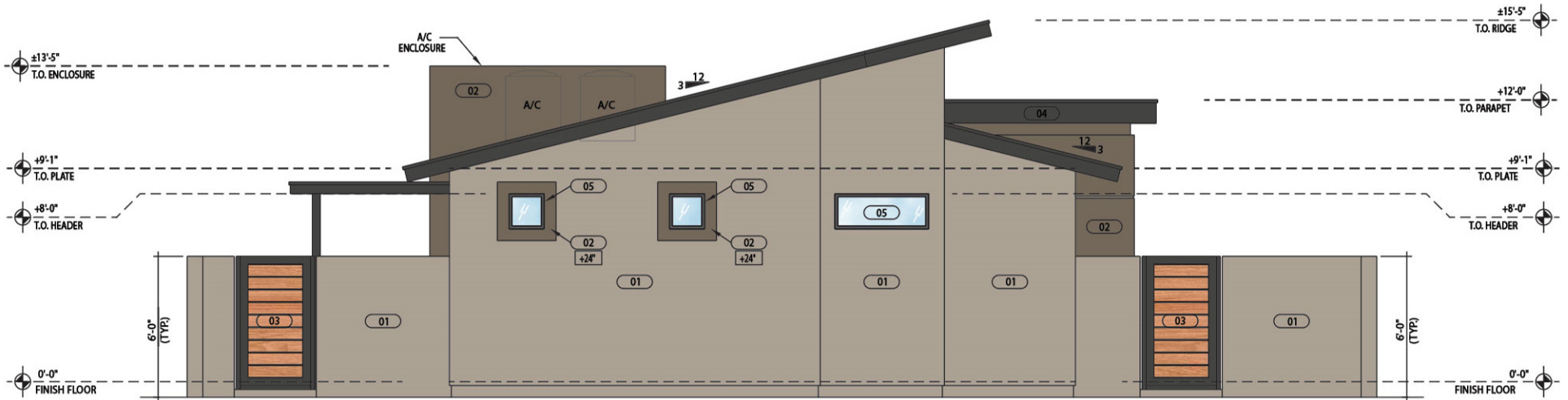


LEFT ELEVATION

COLOR / MATERIAL SCHEDULE

COLOR MATERIAL NUMBER	LOCATION	MATERIAL	COLOR	COLOR MATERIAL % OF 3,440	COLOR MATERIAL NUMBER	LOCATION	MATERIAL	COLOR	COLOR MATERIAL % OF 3,440
01	MAIN BODY -	EIFS STUCCO SYSTEM	MEGA GREIGE (SW 7031)	1,714 (50%)	04	FASCIA, BEAMS -	WOOD	IRON ORE (SW 7069)	267 (8%)
02	ACCENT -	STUCCO SYSTEM	BRAINSTORM BRONZE (SW 7033)	760 (22%)		PATIO COVER -	STEEL/ALUMA-WOOD		192 (6%)
	POP-OUTS -	STUCCO SYSTEM OVER FOAM POP-OUT EIFS STUCCO SYSTEM				DOORS -	WOOD/GLASS		57 (2%)
03	ACCENT -	SHIP-LAP ENGINEERED WOOD SIDING	LIGHT ASH	201 (7%)		GATES -	STEEL/WOOD		234 (7%)
					05	WINDOWS -	VINYL WINDOW SYSTEM	BLACK	* 3,000
					06	ROOFING -	OWENS CORNING ARCH. SHINGLES	OKBRIDGE ESTATE GRAY	

* REMOVED FROM SQ. FT./PERCENTAGE OF COLORS/MATERIAL FINISHES



REAR ELEVATION

COLOR / MATERIAL SCHEDULE

COLOR MATERIAL NUMBER	LOCATION	MATERIAL	COLOR	COLOR MATERIAL % OF 3,440 ⌘	COLOR MATERIAL NUMBER	LOCATION	MATERIAL	COLOR	COLOR MATERIAL % OF 3,440 ⌘
01	MAIN BODY -	EIFS STUCCO SYSTEM	MEGA GREIGE (SW 7031)	1,714 ⌘ (50%)	04	FASCIA, BEAMS -	WOOD	IRON ORE (SW 7069)	267 ⌘ (8%)
02	ACCENT -	STUCCO SYSTEM	BRAINSTORM BRONZE (SW 7033)	760 ⌘ (22%)		PATIO COVER -	STEEL/ALUMA-WOOD		192 ⌘ (6%)
	POP-OUTS -	STUCCO SYSTEM OVER FOAM POP-OUT EIFS STUCCO SYSTEM				DOORS -	WOOD/GLASS		*57 ⌘
03	ACCENT -	SHIP-LAP ENGINEERED WOOD SIDING	LIGHT ASH	201 ⌘ (7%)		05	WINDOWS -	VINYL WINDOW SYSTEM	BLACK
					06	ROOFING -	OWENS CORNING ARCH. SHINGLES	OAKRIDGE ESTATE GRAY	* 3,000 ⌘
* REMOVED FROM SQ. FT./PERCENTAGE OF COLORS/MATERIAL FINISHES									



RIGHT ELEVATION

COLOR / MATERIAL SCHEDULE

COLOR MATERIAL NUMBER	LOCATION	MATERIAL	COLOR	COLOR MATERIAL % OF 3,440	COLOR MATERIAL NUMBER	LOCATION	MATERIAL	COLOR	COLOR MATERIAL % OF 3,440
01	MAIN BODY -	EFS STUCCO SYSTEM	MEGA GREIGE (SW 7031)	1,714 (50%)	04	FASCIA, BEAMS -	WOOD	IRON ORE (SW 7069)	267 (8%)
02	ACCENT -	STUCCO SYSTEM	BRAINSTORM BRONZE (SW 7033)	760 (22%)		PATIO COVER -	STEEL/ALUMA-WOOD		192 (6%)
	POP-OUTS -	STUCCO SYSTEM OVER FOAM POP-OUT EFS STUCCO SYSTEM				DOORS -	WOOD/GLASS		*57 (2%)
03	ACCENT -	SHIP-LAP ENGINEERED WOOD SIDING	LIGHT ASH	201 (7%)		GATES -	STEEL/WOOD		234 (7%)
					05	WINDOWS -	VINYL WINDOW SYSTEM	BLACK	*3,000 (87%)
					06	ROOFING -	OWENS CORNING ARCH SHINGLES	ONKRIE ESTATE GRAY	

* REMOVED FROM SQ. FT./PERCENTAGE OF COLORS/MATERIAL FINISHES