

MATERIAL SCHEDULE

MATERIAL
COLOR

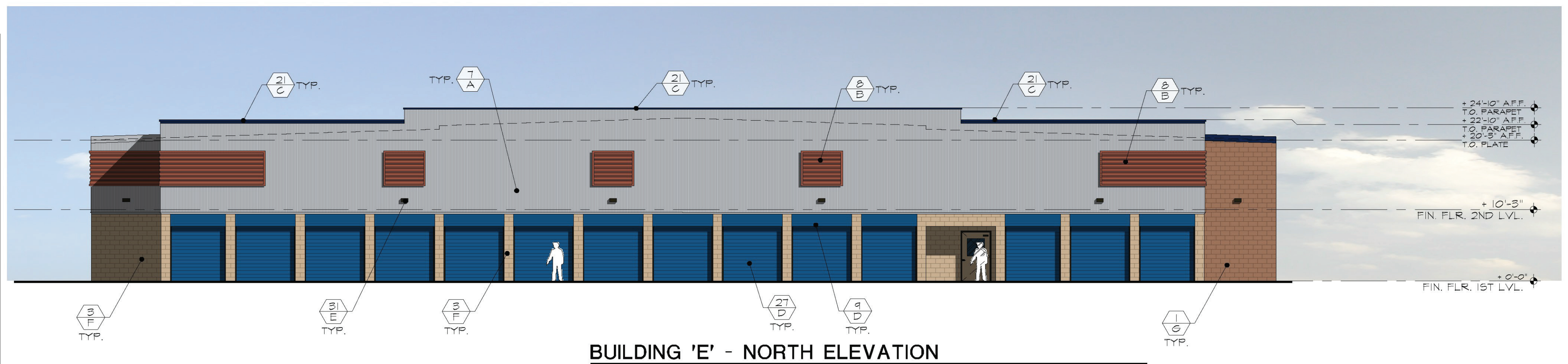
MATERIALS

1. 12 x 8 x 16 SPLIT FACE SMOOTH CMU
2. 8 x 8 x 16 SMOOTH CMU
- 3.
- 4.
- 5.
- 6.
7. 'McELROY METAL' CORRUGATED MULTI-COR PANEL
8. 'McELROY METAL' MEGA-RIB PANEL (HORIZONTAL)
9. METAL CLOSURE PANEL
10. 'McELROY METAL' MARQUEE-LOK SOFFIT PANEL
- 11.
- 12.
- 13.
14. 'McELROY METAL' CONTINUOUS METAL BASE TRIM
15. DRIP EDGE FLASHING
16. 'McELROY METAL' HIGH-SIDE TRIM FLASHING
- 17.
18. 'McELROY METAL' STANDING SEAM METAL ROOF PANELS NOT VISIBLE
19. METAL FASCIA
- 20.
21. METAL PARAPET COPING
22. CONTINUOUS METAL GUTTER (FACTORY PAINTED)
23. DOWNSPOUT GUTTER W/ OVERFLOW PER MFR.
24. ELEVATOR DOOR
25. 4'-0" x 7'-0" H.M. DOOR
26. 3'-0" x 7'-0" H.M. DOOR
27. 'JANUS' ROLL-UP DOOR (SIZE PER SCHEDULE)
- 28.
- 29.
- 30.
31. WALL PACK LIGHT FIXTURE
32. CONCRETE-FILLED STEEL BOLLARD
33. GABION STONE WALL (MATCH EXISTING)
- 34.

COLORS

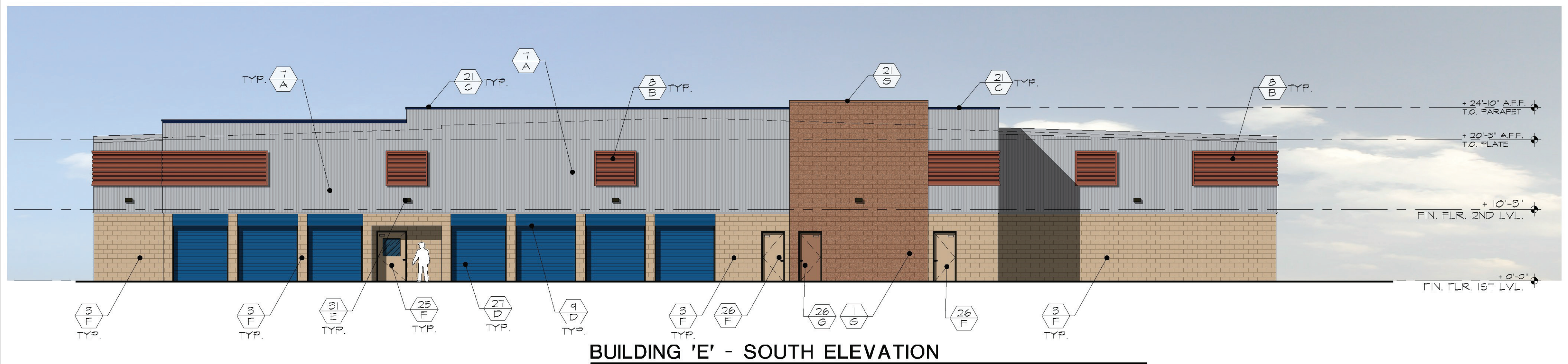
- A. GALVALUME (McELROY METAL)
- B. COOL TERRA-COTTA (McELROY METAL)
- C. COOL REGAL BLUE (McELROY METAL)
- D. ROYAL BLUE (JANUS) or PAINT TO MATCH
- E. DARK BRONZE
- F. HIGH NOON #9P 2550 (DUNN EDWARDS)
- G. AUTUMN CLIFF #9P 2710 (DUNN EDWARDS)
- H. COYOTE PAW #9P 2830 (DUNN EDWARDS)
- I. VIN-L-STRIPE YELLOW (DUNN EDWARDS)
- J. UNFINISHED CLEAR COAT DEAL
- K. UNFINISHED CLEAR COAT DEAL
- L. MANUFACTURER FINISH
- M. SILVER METALLIC

ALL PAINTS AND FINISHES PER MANUFACTURER UNLESS NOTED OTHERWISE



BUILDING 'E' - NORTH ELEVATION

SCALE: 3/32" = 1'-0"



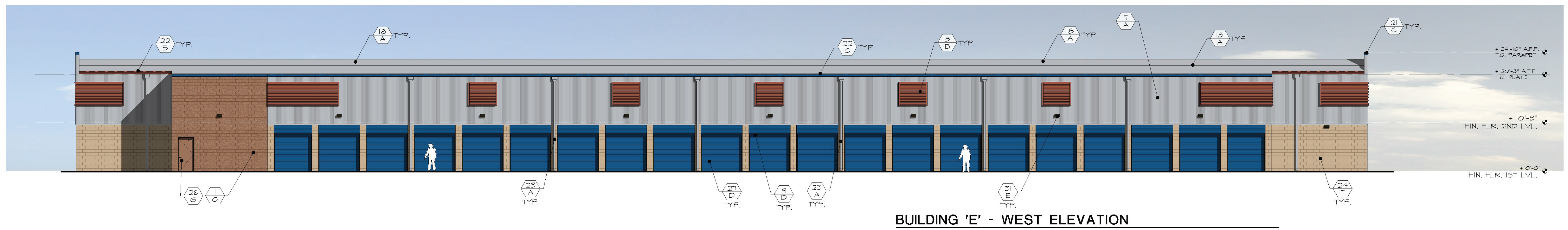
BUILDING 'E' - SOUTH ELEVATION

SCALE: 3/32" = 1'-0"



BUILDING 'E' - EAST ELEVATION

SCALE: 3/32" = 1'-0"



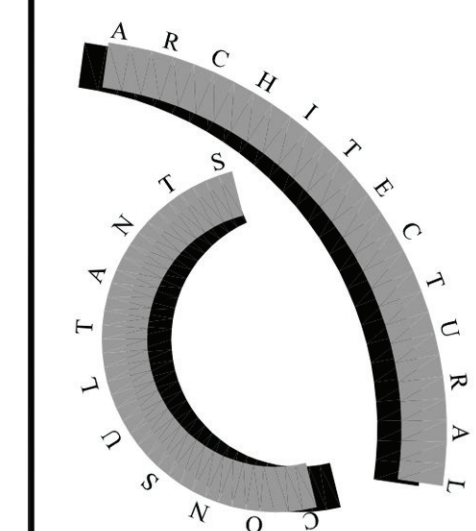
BUILDING 'E' - WEST ELEVATION

SCALE: 3/32" = 1'-0"

*Architectural
Concepts*

68851 Calle Monforte
Cathedral City, California
92234

Phone (480) 734-1687
Em arconcepts52@gmail.com

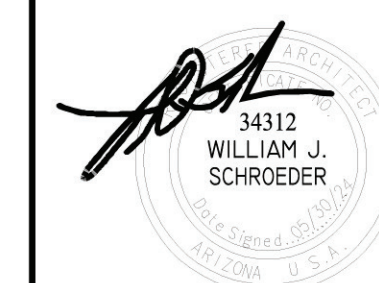


ARC Services Inc.
14010 N. SUSSEX PLACE
Fountain Hills, Arizona 85268

phone (480)-837-0761
em.pgollon@arcservicesinc.com

All reports, plans, specifications, computer files, field data, notes and other documents and instruments prepared by the design professional as instruments of service shall remain the property of the design professional. The design professional shall retain all common law, statutory and other reserved rights, including the copyright therein.

seal



EXP. 12.31.26

**RED MOUNTAIN
SELF STORAGE AND RV
EXPANSION OF EXIST. FACILITY**
5612 E. McDOWELL ROAD
MESA, ARIZONA 85215

Title:
Date: 05/30/24
Project number: RMSE
Drawn by:
Checked by: PG
CAD file:

- Design Development
- Progress Const. Docs.
- City Submittal
- Bid Package
- Construction Issue
- Record Drawings

Sheet Number:

EL1







EXISTING BUILDING INTERNAL YARD VIEW



EXISTING LOADING BAY NEW TO MATCH