



# Design Review Board



# DRB22-01218



# Request

- Design Review
- To allow a public library

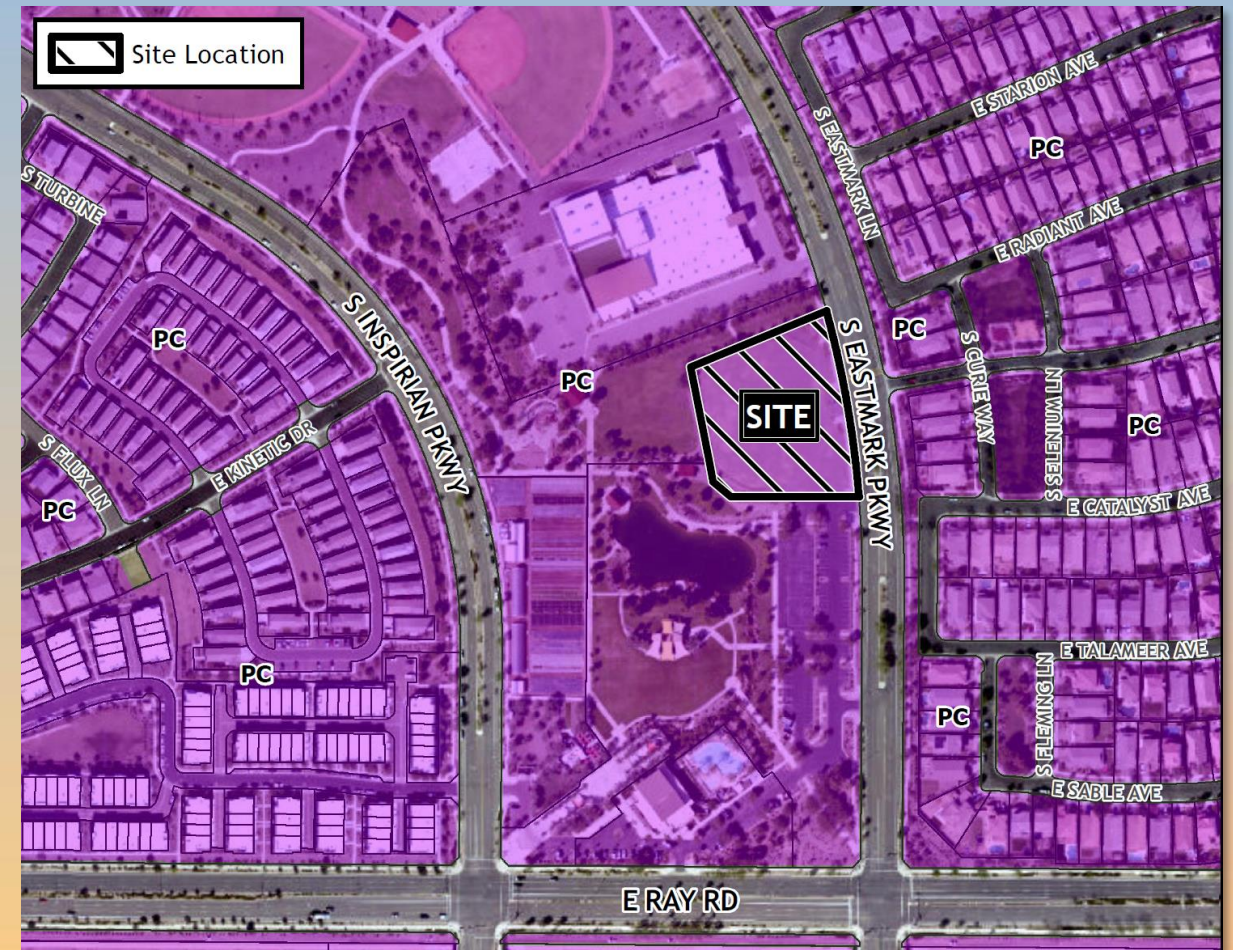






# Location

- North of Ray Road
- East of Crismon Road
- West side of Eastmark Pkwy
- Within the Great Park

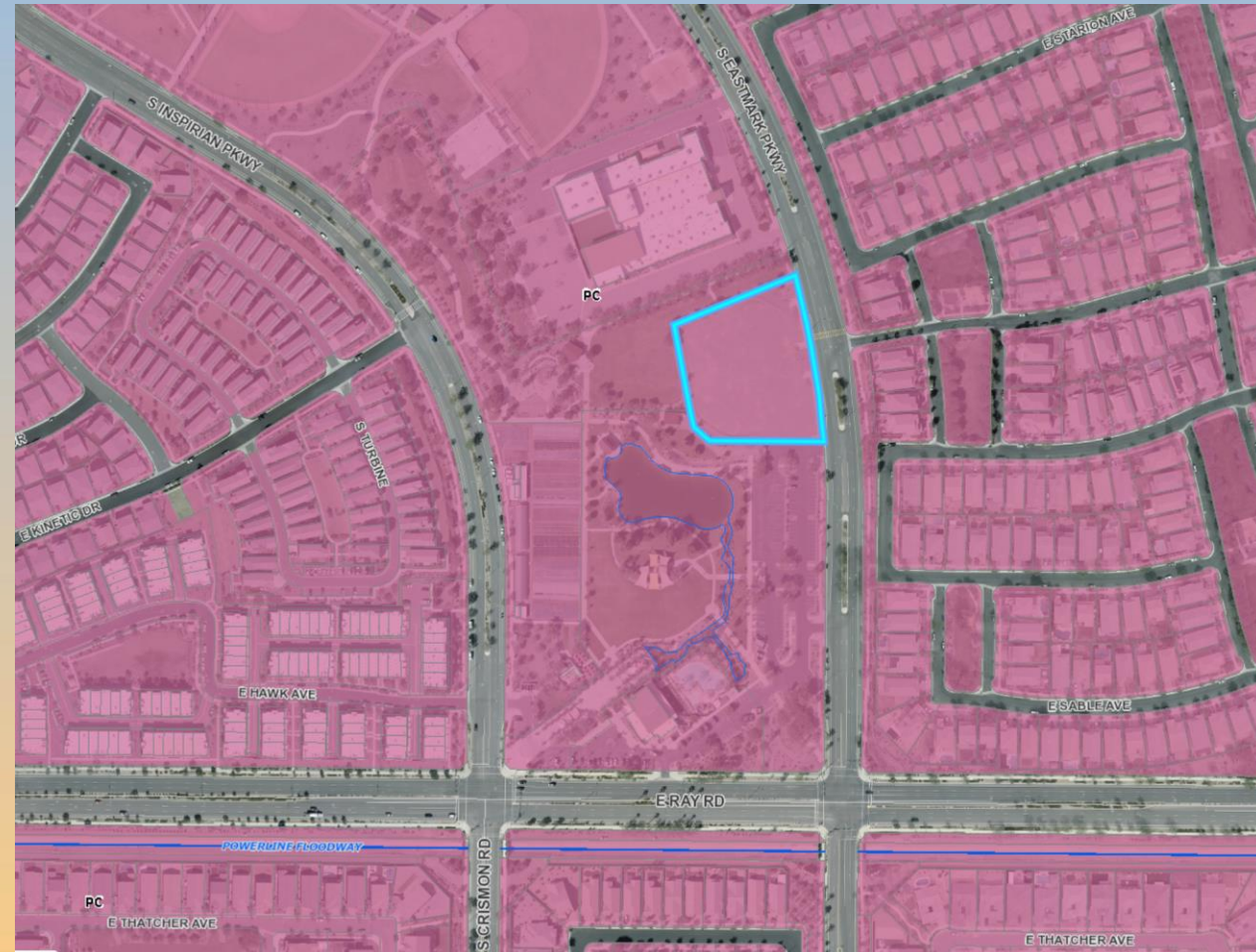






# Zoning

- Planned Community (PC)
- Development Unit 7 in Eastmark
- Civic Space Land Use Group







# Site Photos



Looking southwest from Eastmark Parkway





# Site Photos



Looking northwest from Eastmark Parkway





# Site Plan

- 28,250 sf building
- 3 main entrances
- Patios
- Employee parking lot
- Public parking plaza







# Site Plan

- Employee parking lot

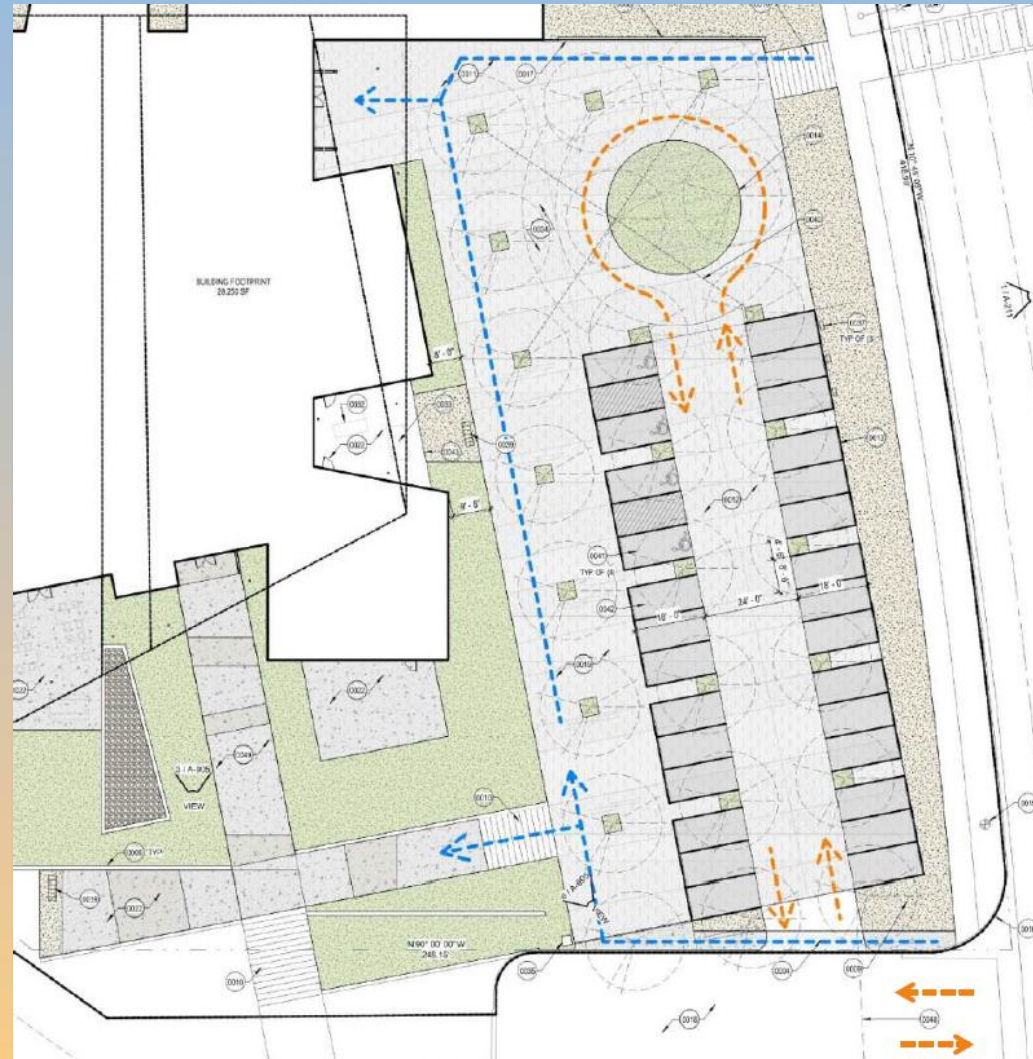






# Site Plan

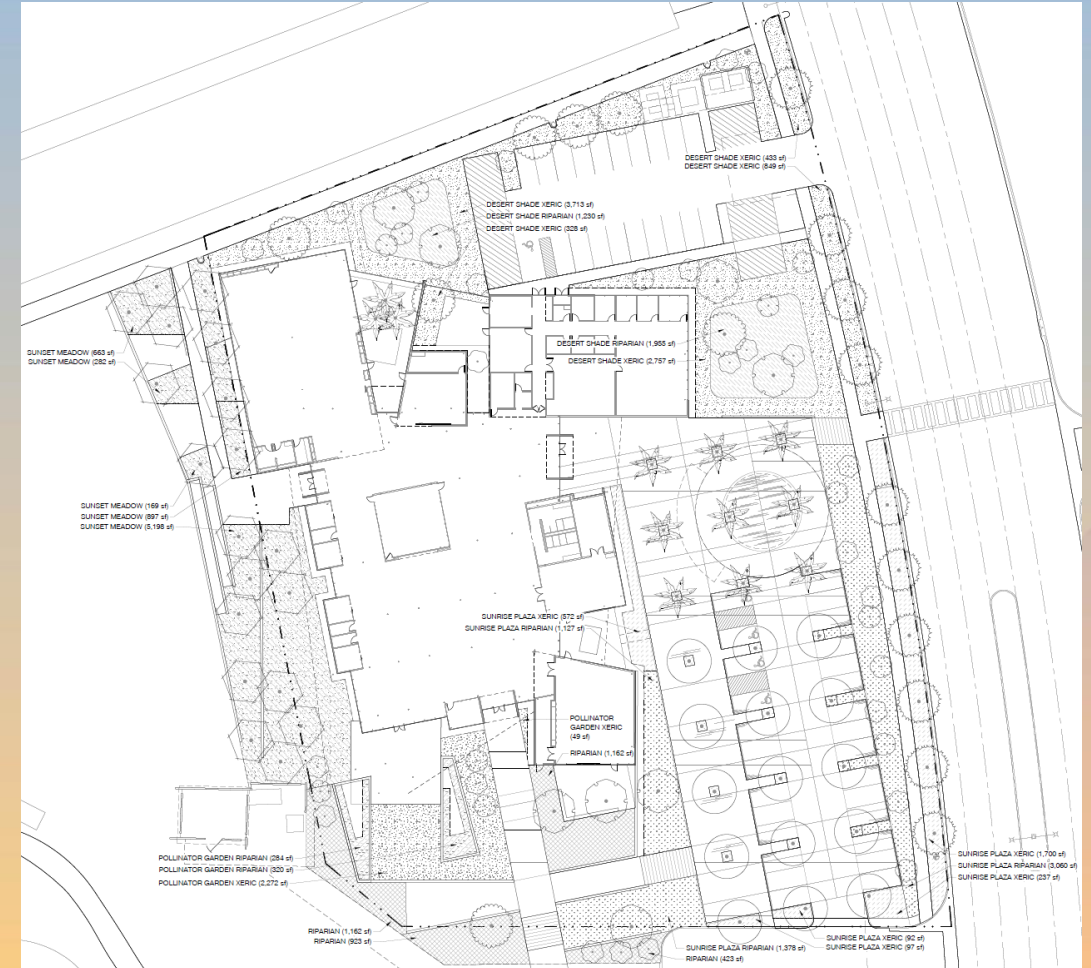
- Parking plaza







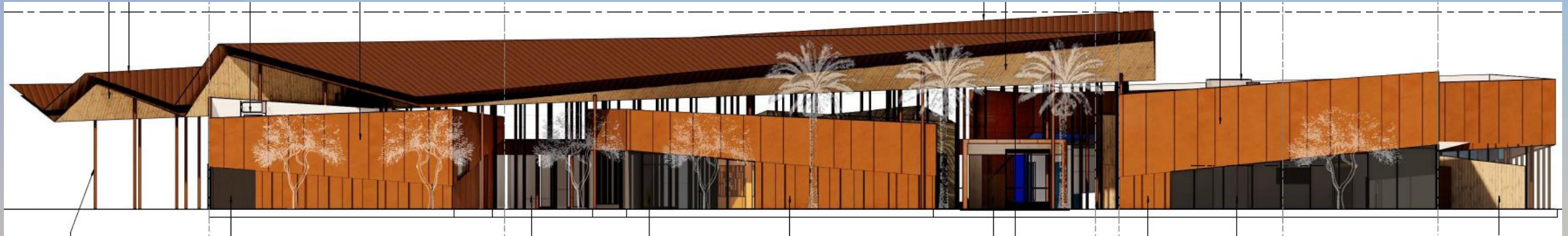
# Landscape Plan



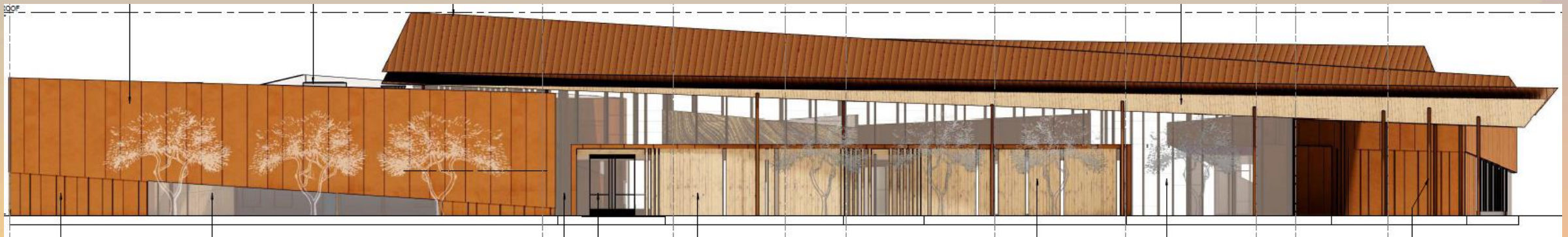




# Elevations



EAST - OVERALL

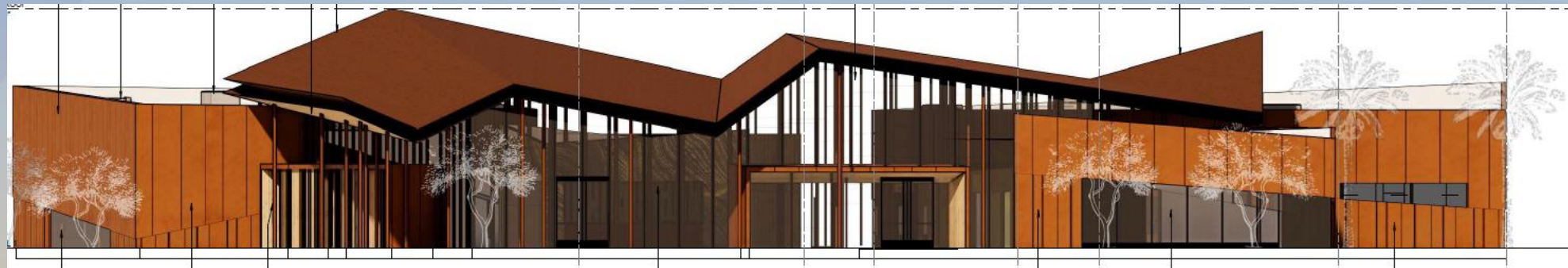


WEST - OVERALL

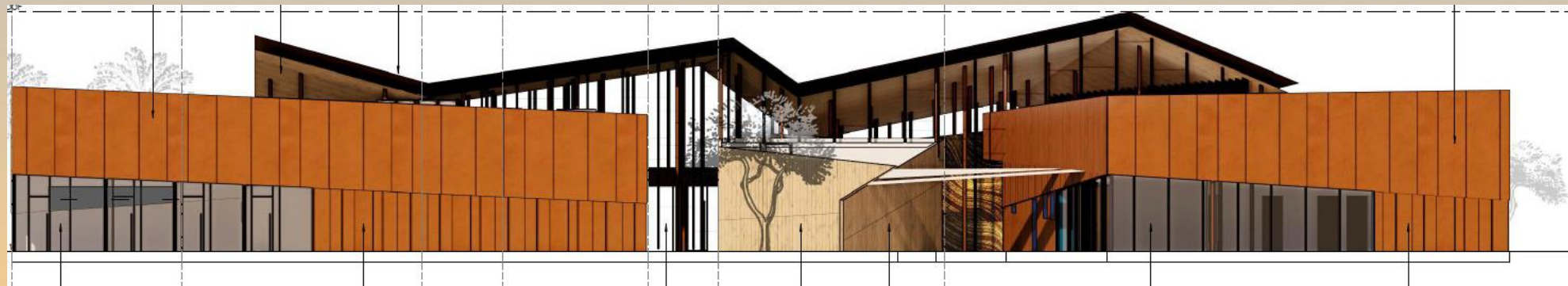




# Elevations



SOUTH - OVERALL



NORTH - OVERALL





# Perspective from East







# Perspective from South







# Perspective from West







# Perspective from North







# Main Entry







# West Entry







# South Entry







# Reading Patio







# Southeast Approach







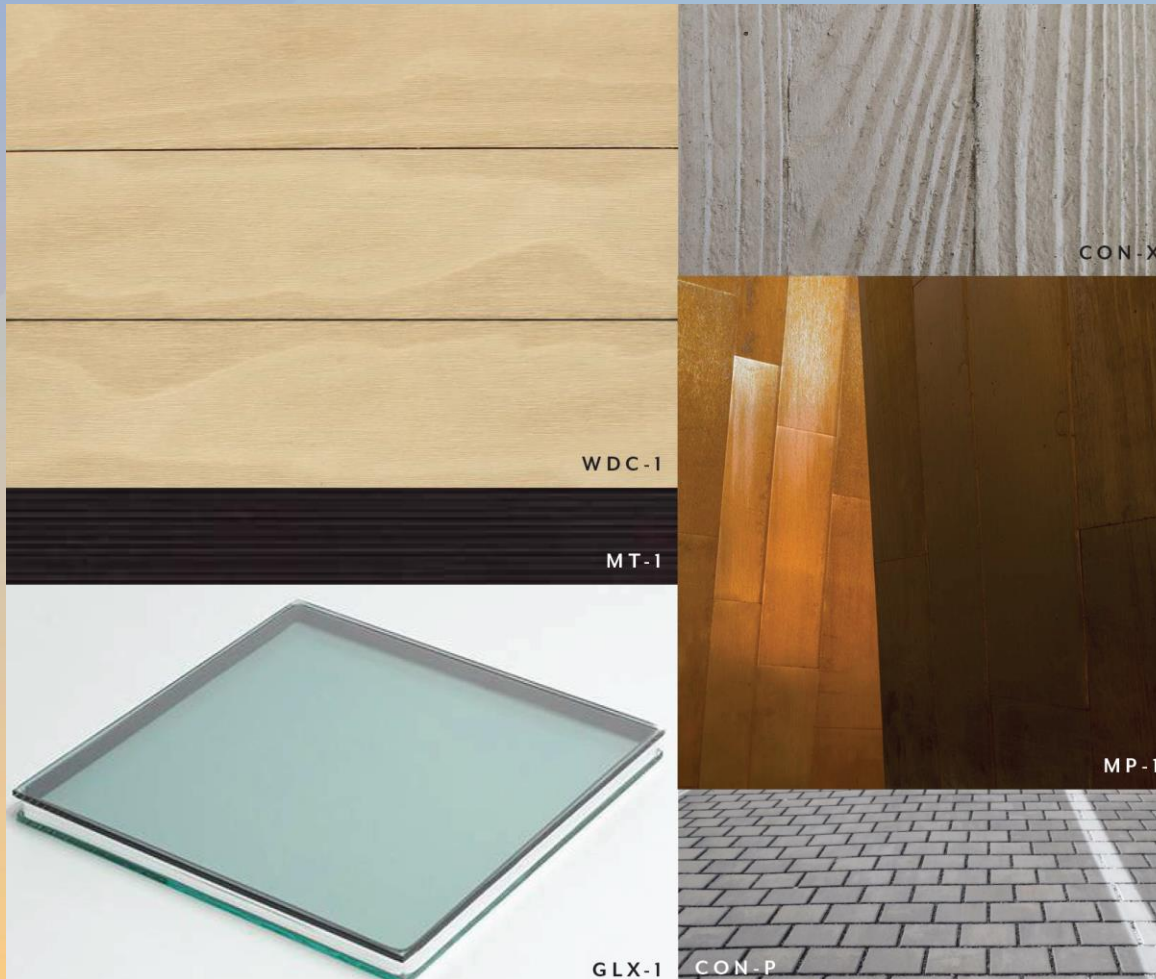
# Thinkspot Patio







# Colors and Materials



CODE	DESCRIPTION
CON-P	CONCRETE PAVERS
CON-X	EXPOSED CONCRETE
GLX-1	EXTERIOR GLAZING
MP-1	EXTERIOR METAL PANEL
MT-1	ALUMINUM WINDOW WALL
WDC-1	WOOD CLADDING





# Findings

- ✓ Staff is seeking your review and recommendation on the following:
  - ✓ Proposed building and landscape architecture
  - ✓ Materials - wood and metal

*Staff welcomes any feedback*





# Design Review Board