



Planning & Zoning Board



ZON25-00301

Mesa Padel Club



Request

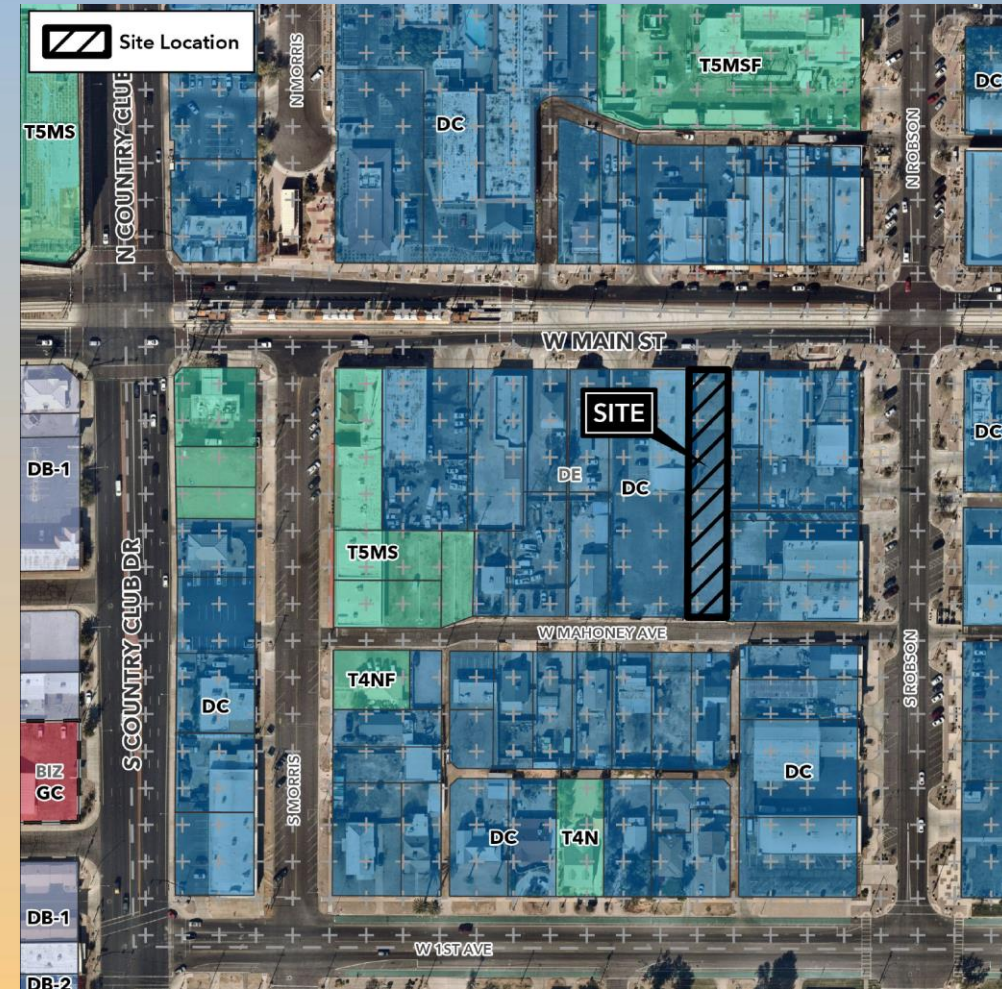
- Site plan review for a Small-Scale Commercial Recreation Facility





Location

- Located on the south side of Main Street
- East of Country Club Drive





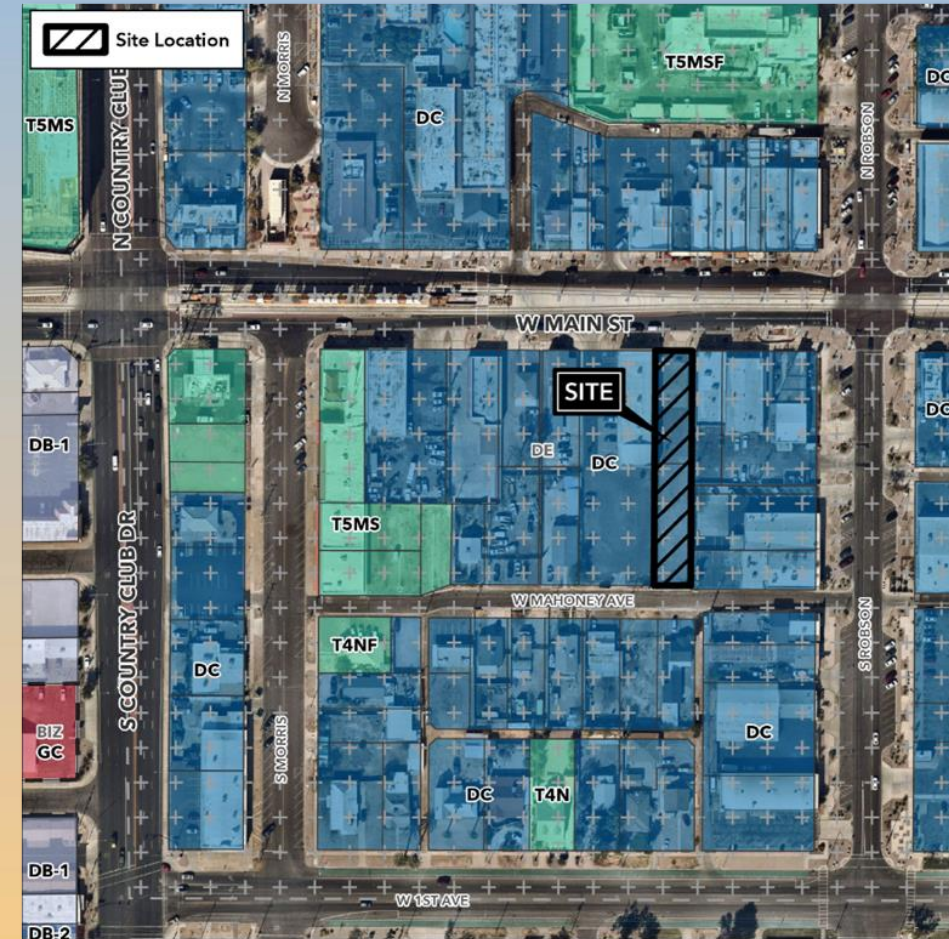
General Plan

- N2: Promote adaptive reuse and infill
- LU3: Encourage infill and redevelopment
- LU5: Encourage development of vibrant activity centers
- Principal Land Use



Zoning

- Existing: Downtown Commercial with a Downtown Events Overlay





Site Photos

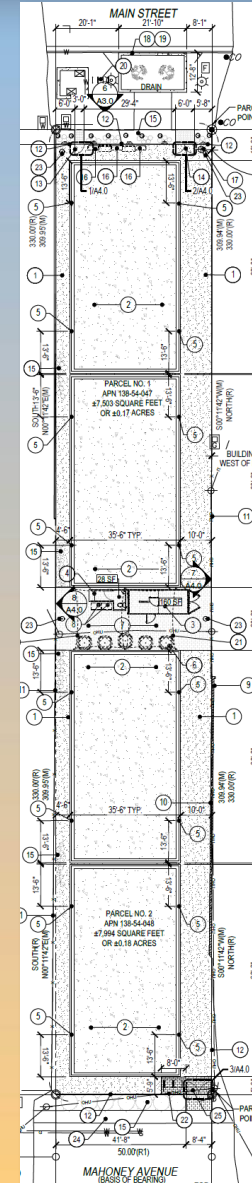


Looking south from Main Street



Site Plan

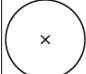









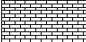
- Four padel ball courts
- Spectator and gathering areas along Main St and centrally between courts
- Converted shipping container to serve as office and rental facility
- Street and public parking

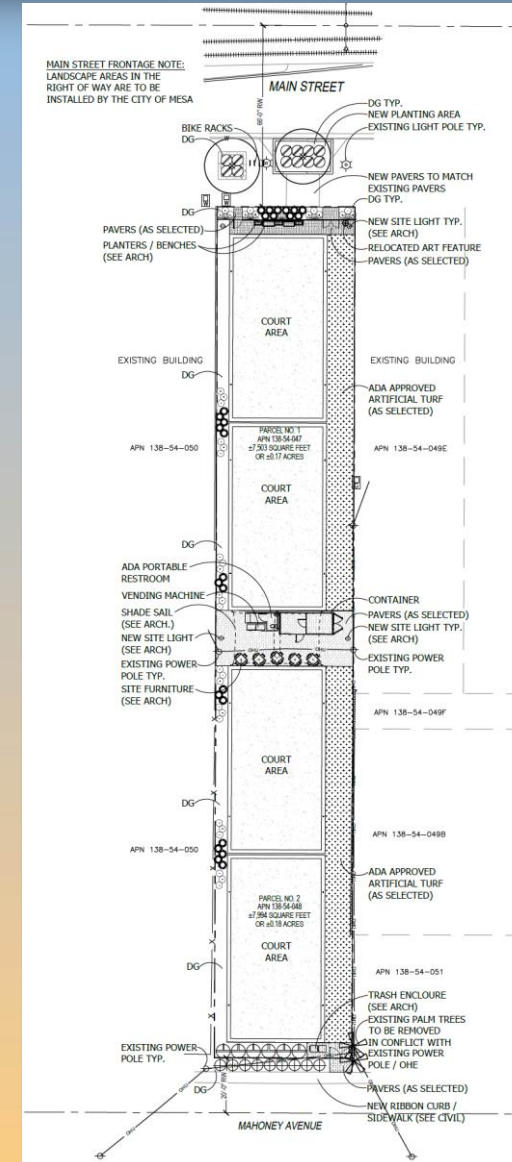




Landscape Plan

PLANTING LEGEND

SYMBOL	TREES	SIZE / QTY
	PARKINSONIA 'DESERT MUSEUM' DESERT MUSEUM PALO VERDE	36" BOX / 2 QTY / LOW-BREAKING
	EXISTING MEXICAN FAN PALM TO BE REMOVED	2 QTY
SYMBOL	SHRUBS	SIZE/ QTY
	HESPERALOE PARVIFLORA 'LITTLE GIANT' LITTLE GIANT RED YUCCA	15 GAL, 26 QTY
	DODONAEA VISCOSA 'EMERALD ICE' HOPSEED	5 GAL, 6 QTY
	JUSTICIA CALIFORNICA CHUPAROSA	5 GAL, 12 QTY
	LEUCOPHYLLUM 'SAN ANTONIO ROSE' COMPACT TEXAS SAGE	5 GAL, 9 QTY
	RUSELLIA EQUISETIFORMIS 'JASPER' CORAL FOUNTAIN GRASS	5 GAL, 6 QTY
	EREMOPHILA GLABRA OUTBACK SUNRISE EMU	5 GAL, 36 QTY
	FICUS PUMILA CREEPING FIG VINE	5 GAL, 5 QTY
SYMBOL	INERT MATERIAL	SIZE/ COMMENTS
DG	DECOMPOSED GRANITE MADISON GOLD	1/2" SCREENED, 2" DEPTH TYP.
	ARTIFICIAL GRASS / SPORT TURF - AS SELECTED ADA COMPLIANT	SEE ARCHITECT FOR DETAILS
	PAVERS - AS SELECTED ACKERSTONE OR EQUAL	SEE ARCHITECT FOR DETAILS





1 WEST ELEVATION
SCALE: 1/8"=1'-0"

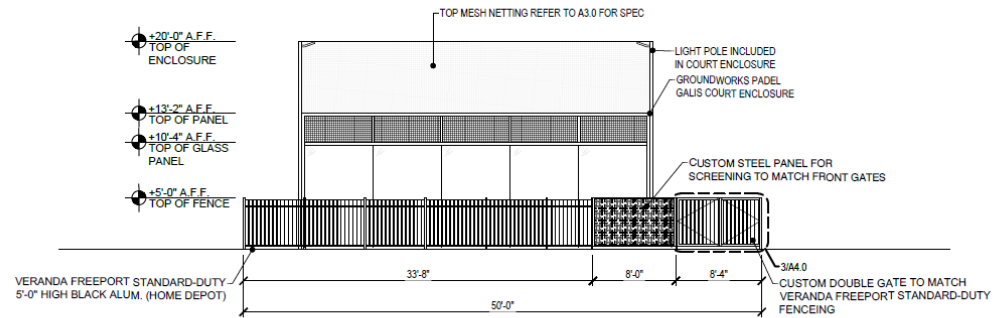
2 WEST ELEVATION
SCALE: 1/8"=1'-0"

3 EAST ELEVATION
SCALE: 1/8"=1'-0"

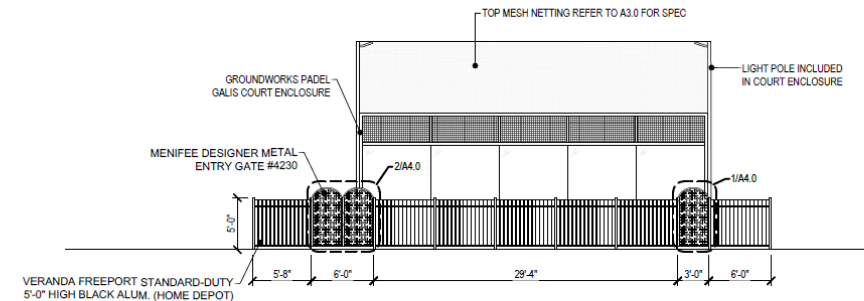
4 NORTH ELEVATION
SCALE: 1/8"=1'-0"



Elevations



5 SOUTH ELEVATION
 SCALE: 1/8"=1'-0"

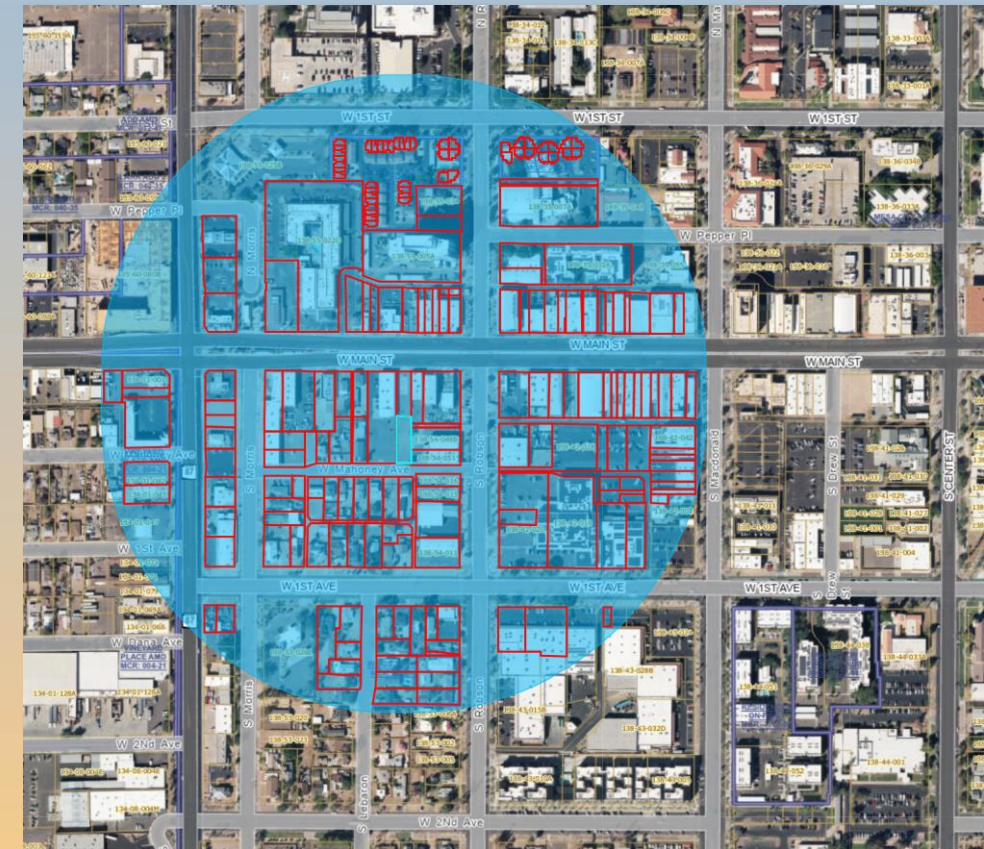


6 NORTH ELEVATION
 SCALE: 1/8"=1'-0"



Citizen Participation

- Notified property owners within 1,000', HOAs, and registered neighborhoods
- Neighborhood meeting was held June 30, 2025, with three neighbors in attendance
- No additional feedback has been received





Findings

- ✓ Complies with the 2050 Mesa General Plan
- ✓ Criteria in Chapter 69 for Site Plan Review

Staff recommend Approval with Conditions



Planning & Zoning Board