

valmont® | Larson™

STRUCTURES

ELM & BROADLEAF PRODUCT INFORMATION



LARSON MONO-TREES



- **Larson** created the very first mono-pine cellular tower in 1992
- The shortest mono-tree **Larson** has produced is 9ft, the tallest is 198ft
- **Larson** branches have been wind tunnel tested up to 140 mph



- Standard Elm branch lengths are: 4ft, 6ft, 8ft, 10ft and 12ft
- 14' and 16' branches are also available



LARSON MONO-ELM / BROADLEAF FOLIAGE OPTIONS



All foliage is available in different colors to achieve the best match to native trees in an area.



Larson foliage contains realistic design elements such as insect damage, veins and texture.

ELM / BROADLEAF
FOLIAGE



A mixture of two different foliage colors is used on each tree to provide a natural appearance.



LARSON MONO-TREE BARK & FINISH OPTIONS



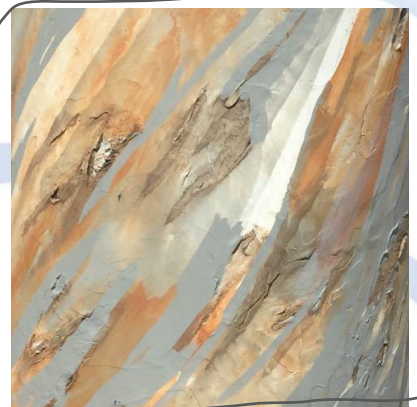
STANDARD PINE BARK



STANDARD BROADLEAF
(MAGNOLIA / ELM) BARK



PREMIUM PINE /
REDWOOD BARK



EUCALYPTUS
BARK

- Trees can be finished with realistic bark, painted brown, or camouflage painted.
- Bark textures are painted with multiple colors and washes to create a natural bark appearance.
- Bark is applied wet, directly to the pole and textured.
- Poles are etched prior to application of bark to ensure a strong bond between bark and the galvanized pole.



LARSON MONO-ELM / BROADLEAF X PROFILES



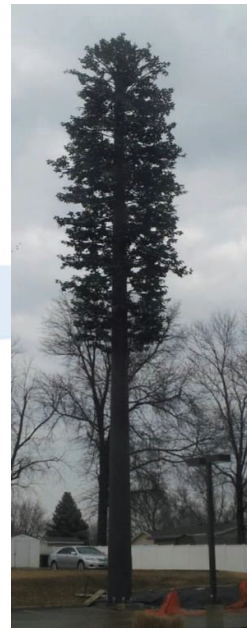
65' CONICAL PINE
TAPER



47' BROADLEAF
STANDARD TAPER



20' BROADLEAF
LOLLIPOP TAPER



95' BROADLEAF
STANDARD TAPER



60' BROADLEAF
INVERTED TAPER

Larson mono-trees can be designed with different profile tapers in order to customize their appearance to satisfy jurisdictional requirements.



LARSON ANTENNA SOCKS AND SPECIALTY BRANCHES

ANTENNA + SOCK + BRANCHES



RF-friendly **Larson Antenna Socks** are vital to camouflage antennas within the canopy of the tree & the addition of **Larson Antenna Branches** can create complete concealment.

MONO-ELM WITH AND WITHOUT ANTENNA BRANCHES



Microwave & RRU Socks & Branches are also available to help all equipment blend into the canopy.

