

**FINISH CALCS:**

EIFS:	886 S.F.	31.1%
CONC. BLK:	768 S.F.	26.9%
AWNING:	73 S.F.	2.6%
FLASHING:	45 S.F.	1.6%
O.H. DOORS:	960 S.F.	33.7%
STOREFRONT:	118 S.F.	4.1%
<b>TOTALS:</b>	<b>2850 S.F.</b>	<b>100%</b>

NOTE:  
AWNINGS PROJECT 3'-0"  
ALL LOCATIONS (TYP.)

**FINISH CALCS:**

EIFS:	886 S.F.	50.0%
CONC. BLK:	768 S.F.	43.3%
STOREFRONT:	118 S.F.	6.7%
<b>TOTALS:</b>	<b>1772 S.F.</b>	<b>100%</b>

NOTE:  
ROOF TOP EQUIPMENT SHALL  
SHALL BE SHIELDED FROM  
THE GROUND BY THE  
PARAPET

**1 SOUTH ELEVATION**  
A3-1 3/16"=1'-0"

**FINISH CALCS:**

WOOD FIN.	323 S.F.	28.3%
EIFS:	563 S.F.	49.3%
CONC. BLK:	35 S.F.	3.1%
STOREFRONT:	220 S.F.	19.3%
<b>TOTALS:</b>	<b>1141 S.F.</b>	<b>100%</b>

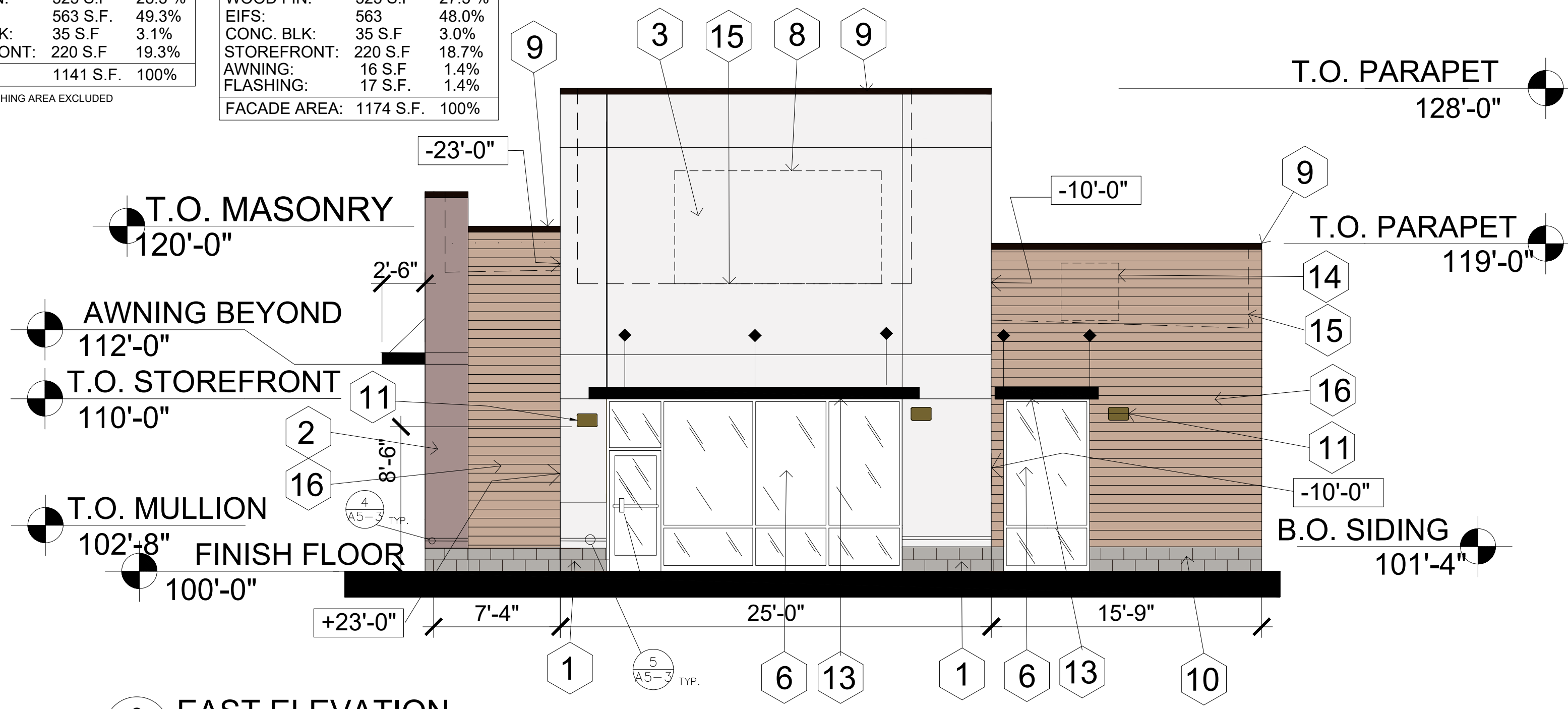
AWNING & FLASHING AREA EXCLUDED

**FINISH CALCS:**

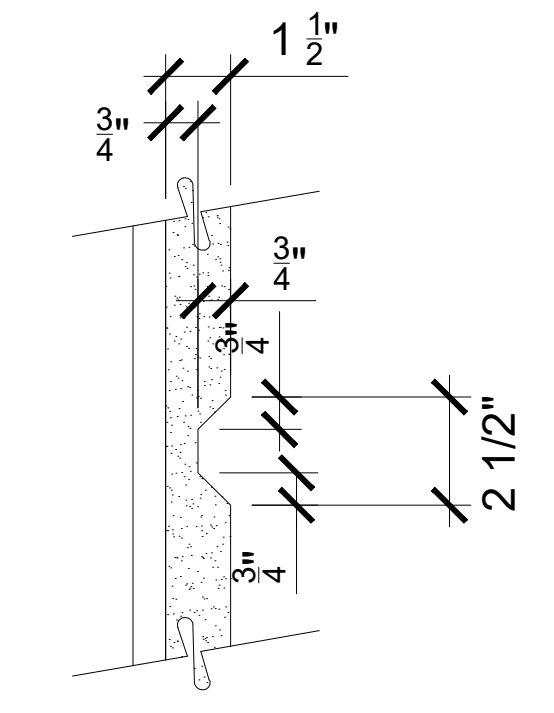
WOOD FIN.	323 S.F.	27.5%
EIFS:	563 S.F.	48.0%
CONC. BLK:	35 S.F.	3.0%
STOREFRONT:	220 S.F.	18.7%
AWNING:	16 S.F.	1.4%
FLASHING:	17 S.F.	1.4%
<b>TOTALS:</b>	<b>1174 S.F.</b>	<b>100%</b>

**KEY NOTES:**

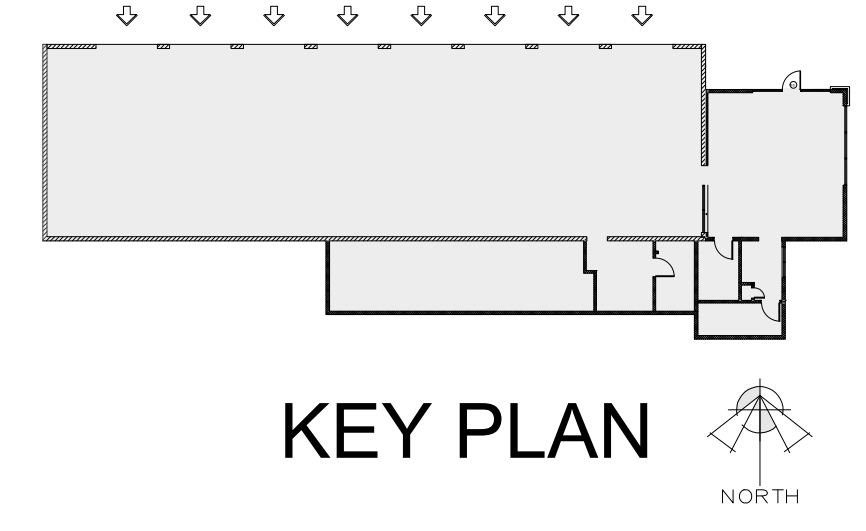
1. OLD CASTLE CONC. BLOCK - SMOOTH FINISH #8816 MW (PEPPERCORN) WITH IWR
2. EIFS - MATCH SHERWIN-WILLIAMS #SW-7642 PAVESTONE
3. EIFS - MATCH SHERWIN-WILLIAMS #SW-7666 FLEUR de SEL
4. EIFS - MATCH SHERWIN-WILLIAMS #SW -9173 SHIITAKE
5. METAL DOOR - PAINT COLOR TO MATCH ADJACENT MATERIAL
6. ALUMINUM/GLASS STOREFRONT BLACK ANODIZED ALUMINUM FINISH
7. ALUMINUM SECTIONAL OVERHEAD DOORS - BLACK ANODIZED ALUMINUM FINISH
8. SIGN AREA - UNDER SEPARATE CONTRACT
9. METAL FLASHING TO MATCH STOREFRONT COLOR
10. NOT USED
11. EXTERIOR LIGHT - BLACK ANODIZED FINISH
12. NOT USED
13. METAL AWNING - BERRIDGE BLACK
14. HVAC BEHIND PARAPET
15. LINE OF ROOF
16. NICHHA WOOD SIMULATED FIBER SIDING - COLOR: VINTAGEWOOD -POPLAR INSULATED BLACK SPANDREL GLASS IN BLACK ANODIZED FRAME



**2 EAST ELEVATION**  
A3-1 3/16"=1'-0"



**1 EIFS REVEAL DETAIL**  
NO SCALE



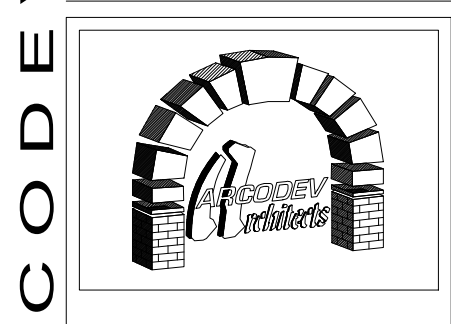
**KEY PLAN**

**BRAKES PLUS**  
3508 ELLSWORTH ROAD  
MESA, ARIZONA 85212

ARCHITECT OF RECORD

REVISION	DATE	COMMENTS
	02.11.26	SUBMITTED TO PLANNING DEPT.

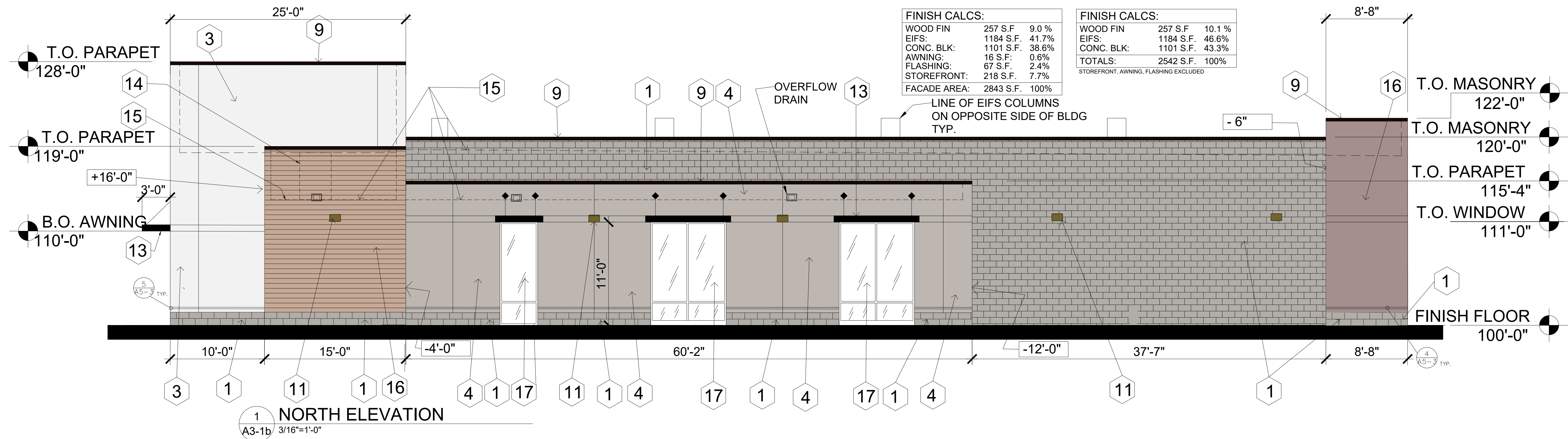
ARCOCODEV JOB #:  
CLIENT JOB #:  
DRAWN BY: NLH  
CHECKED BY: NLH  
DATE OF ISSUE: 02.21.26



45 SPYGLASS DRIVE  
LITTLETON, CO 80123  
VOICE: 303.881-8925

SHEET

**A3-1a**  
EXTERIOR ELEVATIONS



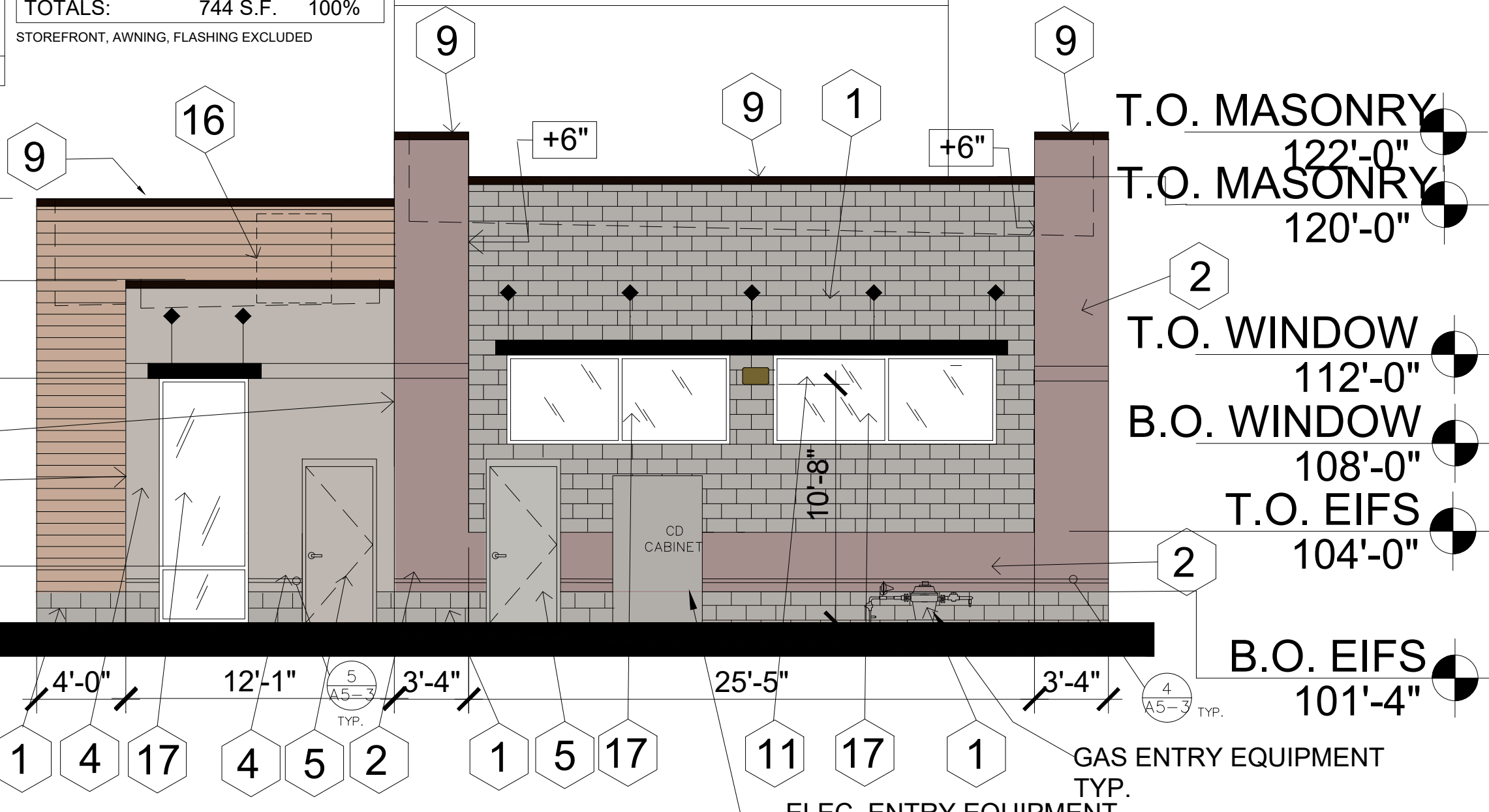
FINISH CALCS:		
WOOD FIN	257 S.F.	9.0 %
EIFS	1184 S.F.	41.7%
CONC. BLK.	1101 S.F.	38.6%
AWNING	16 S.F.	0.6%
FLASHING	67 S.F.	2.4%
STOREFRONT	218 S.F.	7.7%
<b>TOTALS:</b>	<b>2843 S.F.</b>	<b>100%</b>

FINISH CALCS:		
WOOD FIN	257 S.F.	10.1 %
EIFS	1184 S.F.	46.6%
CONC. BLK.	1101 S.F.	43.3%
<b>TOTALS:</b>	<b>2542 S.F.</b>	<b>100%</b>

1 NORTH ELEVATION  
A3-1b 3/16"=1'-0"

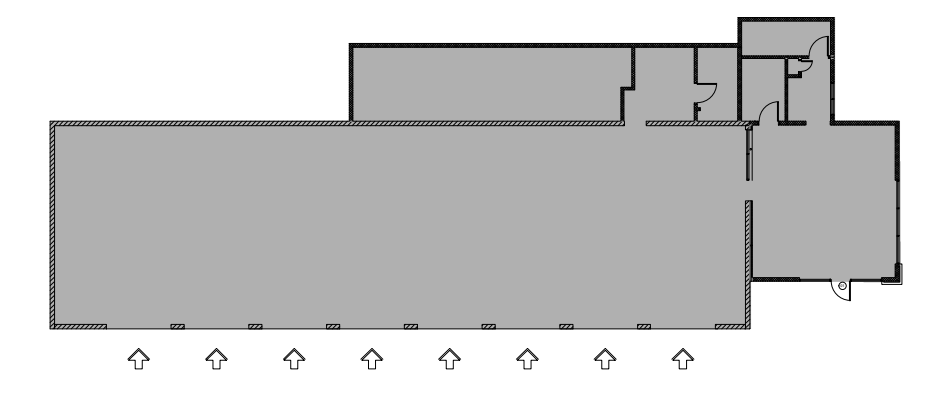
- KEY NOTES:**
1. OLD CASTLE CONC. BLOCK - SMOOTH FINISH #8816 MW (PEPPERCORN) WITH
  2. EIFS - MATCH SHERWIN-WILLIAMS #SW-7642 PAVESTONE
  3. EIFS - MATCH SHERWIN-WILLIAMS #SW-7666 FLEUR de SEL
  4. EIFS - MATCH SHERWIN-WILLIAMS #SW-9173 SHIITAKE
  5. METAL DOOR - PAINT COLOR TO MATCH ADJACENT MATERIAL
  6. ALUMINUM/GLASS STOREFRONT BLACK ANODIZED ALUMINUM FINISH
  7. ALUMINUM SECTIONAL OVERHEAD DOORS - BLACK ANODIZED ALUMINUM FINISH
  8. SIGN AREA - UNDER SEPARATE CONTRACT
  9. METAL FLASHING TO MATCH STOREFRONT COLOR
  10. NOT USED
  11. EXTERIOR LIGHT - BLACK ANODIZED FINISH
  12. NOT USED
  13. METAL AWNING - BERRIDGE BLACK
  14. HVAC BEHIND PARAPET
  15. LINE OF ROOF
  16. NICHIIA WOOD SIMULATED FIBER SIDING - COLOR
  17. VINTAGEWOOD -POPLAR INSULATED BLACK SPANDREL GLASS IN BLACK ANODIZED FRAME

FINISH CALCS:		
WOOD FIN	108 S.F.	11.3%
EIFS	237 S.F.	24.7%
CONC. BLK.	399 S.F.	41.6%
AWNING	20 S.F.	2.1%
FLASHING	22 S.F.	2.3%
MAN DOORS	49 S.F.	5.1%
STOREFRONT	123 S.F.	12.8%
<b>TOTAL FACADE:</b>	<b>958 S.F.</b>	<b>100%</b>

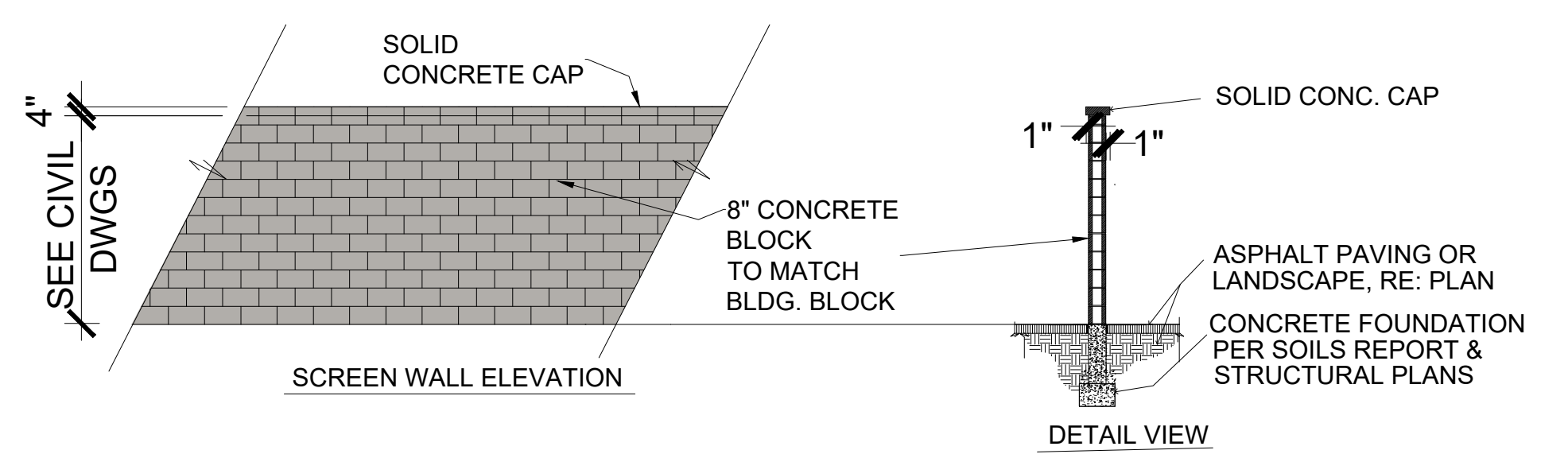


2 WEST ELEVATION  
A3-1b 3/16"=1'-0"

**NOTE:**  
AWNINGS PROJECT 6" ALL LOCATIONS (TYP.)



KEY PLAN

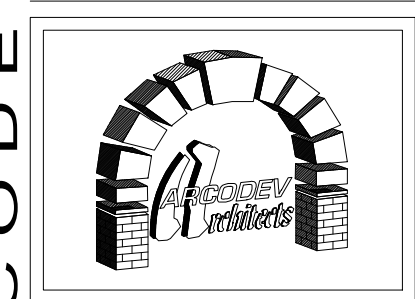


3 SITE SCREEN WALL DETAIL  
NO SCALE

**BRAKES PLUS**  
3508 ELLSWORTH ROAD  
MESA, ARIZONA 85212

ARCHITECT OF RECORD

REVISION	DATE	COMMENTS
1	02.11.26	SUBMITTED TO PLANNING DEPT.



ARCODEV SHEET

A3-1b

EXTERIOR ELEVATIONS