

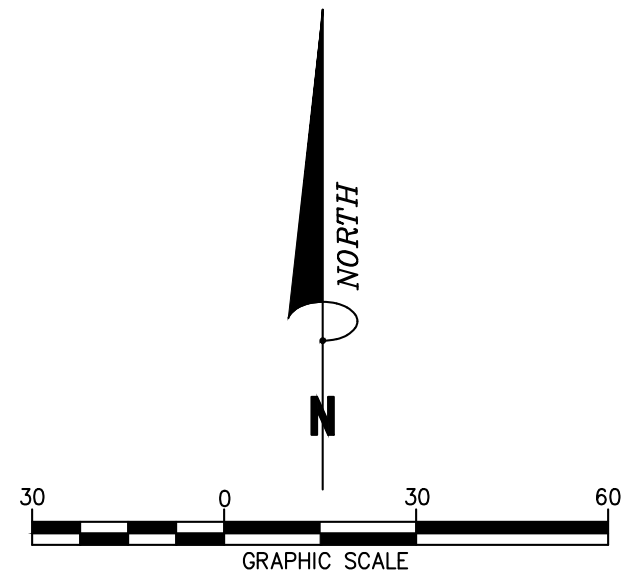




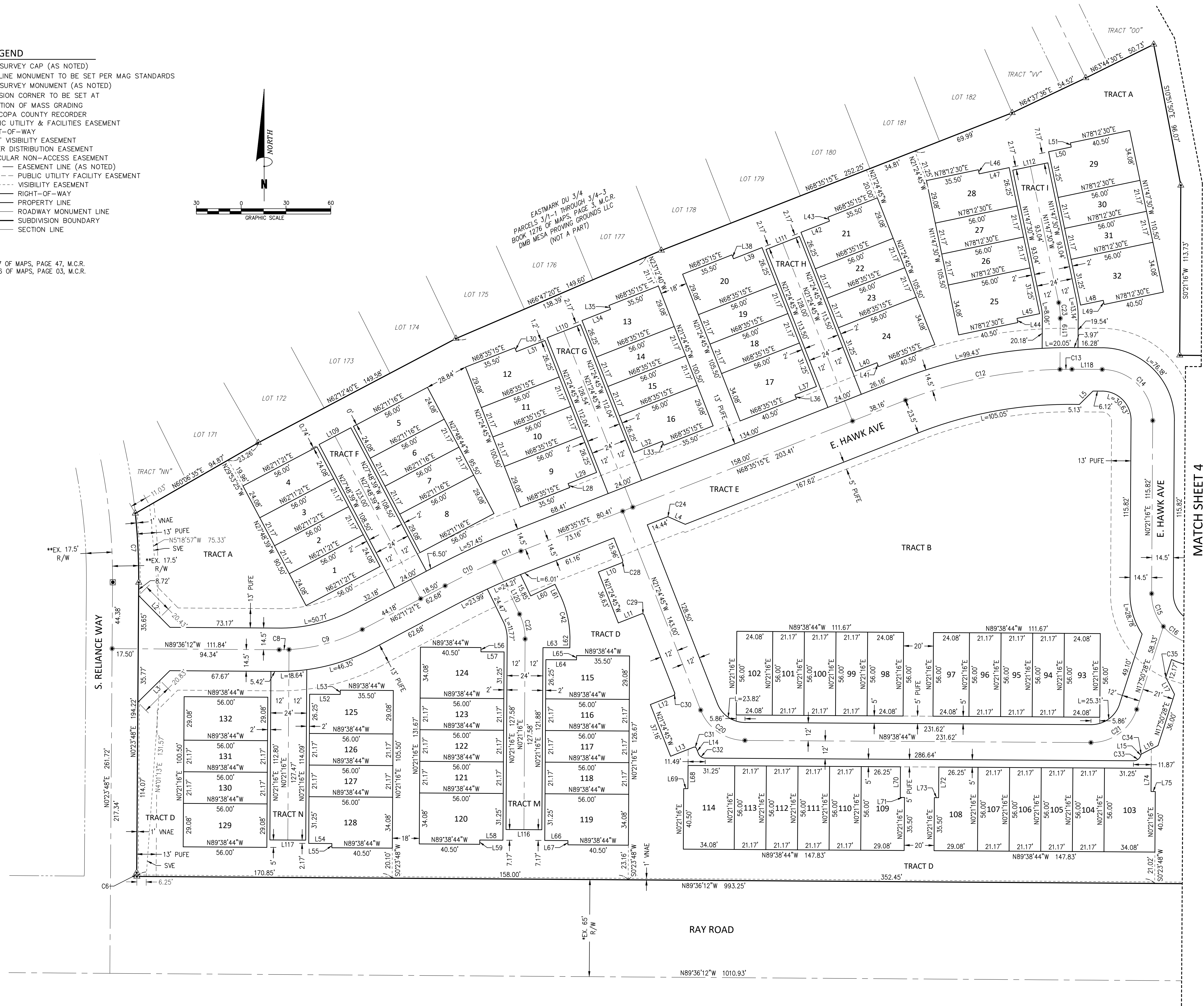


**LEGEND**

- ◻ FOUND SURVEY CAP (AS NOTED)
- CENTERLINE MONUMENT TO BE SET PER MAG STANDARDS
- FOUND SURVEY MONUMENT (AS NOTED)
- ▲ SUBDIVISION CORNER TO BE SET AT COMPLETION OF MASS GRADING
- M.C.R. MARICOPA COUNTY RECORDER
- PUFE PUBLIC UTILITY & FACILITIES EASEMENT
- R/W RIGHT-OF-WAY
- SVE SIGHT VISIBILITY EASEMENT
- PDE POWER DISTRIBUTION EASEMENT
- VNAE VEHICULAR NON-ACCESS EASEMENT
- EASEMENT LINE (AS NOTED)
- PUBLIC UTILITY FACILITY EASEMENT
- VISIBILITY EASEMENT
- RIGHT-OF-WAY
- PROPERTY LINE
- ROADWAY MONUMENT LINE
- SUBDIVISION BOUNDARY
- SECTION LINE



\* PER BOOK 1117 OF MAPS, PAGE 47, M.C.R.  
 \*\* PER BOOK 1276 OF MAPS, PAGE 03, M.C.R.



MATCH SHEET 4

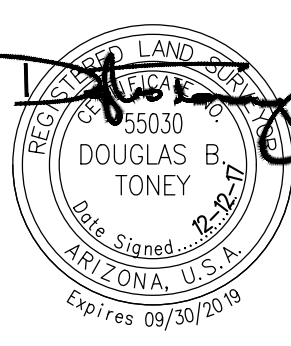
**FINAL PLAT FOR  
 EASTMARK DEVELOPMENT UNIT DU 3/4 - PARCEL 4  
 MESA, ARIZONA**

DATE	REVISION

DATE: 12/12/2017  
 PROJ NO: 050209-01  
 TASK NUM: 003  
 DRAWN BY: DT  
 CHECKED BY: KG  
 QUALITY: CW  
 CLIENT NO:  

SCALE  
 1" = 30'  
 3 OF 5

**Bowman**  
 CONSULTING  
 Group, Ltd.  
 1255 W. Warington Street, #108  
 Tempe, AZ 85281  
 Phone: (480) 629-8830  
 Fax: (480) 629-8841  
 www.bowmanconsulting.com







LINE #	LENGTH	DIRECTION
L1	21.21'	N45°21'16"E
L2	29.93'	N44°37'28"W
L3	30.06'	N45°22'32"E
L4	12.27'	N66°12'51"W
L5	12.73'	N45°21'16"E
L6	12.73'	N45°21'47"E
L7	11.54'	N38°07'18"W
L8	27.14'	N45°21'28"E
L9	22.57'	N44°34'59"W
L10	16.50'	N68°35'15"E
L11	16.50'	N68°35'15"E
L12	16.50'	N68°35'15"E
L13	16.50'	N68°35'15"E
L14	3.50'	N21°24'45"W
L15	0.55'	N17°50'28"E
L16	12.31'	N62°50'28"E
L17	12.31'	N27°09'32"W
L18	2.42'	N89°38'13"W
L19	18.00'	N00°21'47"E
L20	19.16'	N89°38'13"W
L21	18.00'	N00°21'47"E
L22	2.42'	N89°38'13"W
L23	16.00'	N89°38'13"W
L24	16.00'	N89°38'13"W
L25	20.00'	N89°38'13"W
L26	16.00'	N89°38'13"W
L27	16.00'	N89°38'13"W
L28	2.83'	N21°24'45"W
L29	20.50'	N68°35'15"E
L30	2.83'	N21°24'45"W
L31	20.50'	N68°35'15"E
L32	20.50'	N68°35'15"E
L33	2.83'	N21°24'45"W
L34	20.50'	N68°35'15"E
L35	2.83'	N21°24'45"W
L36	2.83'	N21°24'45"W
L37	15.50'	N68°35'15"E
L38	2.83'	N21°24'45"W
L39	20.50'	N68°35'15"E
L40	15.50'	N68°35'15"E

LINE #	LENGTH	DIRECTION
L41	2.83'	N21°24'45"W
L42	20.50'	N68°35'15"E
L43	2.83'	N21°24'45"W
L44	2.83'	N11°47'30"W
L45	15.50'	N78°12'30"E
L46	2.83'	N11°47'30"W
L47	20.50'	N78°12'30"E
L48	15.50'	N78°12'30"E
L49	2.83'	N11°47'30"W
L50	15.50'	N78°12'30"E
L51	2.83'	N11°47'30"W
L52	20.50'	N89°38'44"W
L53	2.83'	N00°21'16"E
L54	15.50'	N89°38'44"W
L55	2.83'	N00°21'16"E
L56	2.83'	N00°21'16"E
L57	15.50'	N89°38'44"W
L58	15.50'	N89°38'44"W
L59	2.83'	N00°21'16"E
L60	18.00'	N64°25'18"E
L61	7.76'	N25°34'42"W
L62	5.70'	N00°21'16"E
L63	18.00'	N89°38'44"W
L64	20.50'	N89°38'44"W
L65	2.83'	N00°21'16"E
L66	15.50'	N89°38'44"W
L67	2.83'	N00°21'16"E
L68	15.50'	N00°21'16"E
L69	2.83'	N89°38'44"W
L70	20.50'	N00°21'16"E
L71	2.83'	N89°38'44"W
L72	20.50'	N00°21'16"E
L73	2.83'	N89°38'44"W
L74	15.50'	N00°21'16"E
L75	2.83'	N89°38'44"W
L76	2.83'	N00°21'47"E
L77	15.50'	N89°38'13"W
L78	2.83'	N00°21'47"E
L79	20.50'	N89°38'13"W
L80	20.50'	N00°21'16"E

LINE #	LENGTH	DIRECTION
L81	2.83'	N89°38'44"W
L82	20.50'	N00°21'16"E
L83	2.83'	N89°38'44"W
L84	2.83'	N89°38'44"W
L85	20.50'	N00°21'16"E
L86	2.83'	N89°38'44"W
L87	20.50'	N00°21'16"E
L88	15.50'	N89°38'13"W
L89	2.83'	N00°21'47"E
L90	15.50'	N89°38'13"W
L91	2.83'	N00°21'47"E
L92	15.50'	N89°38'13"W
L93	2.83'	N00°21'47"E
L94	15.50'	N89°38'13"W
L95	2.83'	N00°21'47"E
L96	2.83'	N00°21'47"E
L97	15.50'	N89°38'13"W
L98	2.83'	N00°21'47"E
L99	15.50'	N89°38'13"W
L100	15.50'	N89°38'13"W
L101	2.83'	N00°21'47"E
L102	15.50'	N89°38'13"W
L103	2.83'	N00°21'47"E
L104	2.83'	N00°21'47"E
L105	20.50'	N89°38'13"W
L106	2.83'	N00°21'47"E
L107	15.50'	N89°38'13"W
L108	5.15'	N89°38'13"W
L109	24.00'	N62°11'21"E
L110	24.00'	N68°35'15"E
L111	24.00'	N68°35'15"E
L112	24.00'	N78°12'30"E
L113	24.00'	N89°38'13"W
L114	24.00'	N89°38'13"W
L115	24.00'	N89°38'13"W
L116	24.00'	N89°38'44"W
L117	24.00'	N89°38'44"W
L118	20.25'	N89°38'44"W
L119	34.15'	N00°21'16"E
L120	38.70'	N25°34'42"W

CURVE #	LENGTH	RADIUS	DELTA
C1	142.83'	400.00'	020°27'32"
C2	70.30'	600.00'	006°42'47"
C3	312.12'	2000.00'	008°56'30"
C4	215.92'	1200.00'	010°18'34"
C5	559.84'	1000.00'	032°04'35"
C6	2.51'	20.00'	007°10'51"
C7	46.33'	417.50'	006°21'28"
C8	6.57'	117.50'	003°12'12"
C9	51.28'	117.50'	025°00'14"
C10	36.76'	500.00'	004°12'43"
C11	19.08'	500.00'	002°11'11"
C12	105.94'	300.00'	020°13'57"
C13	8.03'	300.00'	001°32'04"
C14	53.41'	34.00'	090°00'00"
C15	23.82'	34.00'	040°08'45"
C16	29.58'	34.00'	049°50'45"
C17	13.45'	400.00'	001°55'36"
C18	32.04'	400.00'	004°35'19"
C19	45.49'	400.00'	006°30'56"
C20	38.11'	32.00'	068°13'59"
C21	40.50'	32.00'	072°30'48"
C22	17.20'	38.00'	025°55'59"
C23	10.60'	50.00'	012°08'46"
C24	0.79'	1.00'	045°11'54"
C25	1.25'	1.50'	047°37'02"
C26	0.79'	20.00'	002°16'08"
C27	0.96'	20.00'	002°44'49"
C28	2.36'	1.50'	090°00'00"
C29	2.36'	1.50'	090°00'00"
C30	2.36'	1.50'	090°00'00"
C31	2.36'	1.50'	090°00'00"
C32	5.95'	5.00'	068°13'59"
C33	6.33'	5.00'	072°30'48"
C34	0.79'	1.00'	045°00'00"
C35	0.79'	1.00'	045°00'00"
C36	3.14'	2.00'	090°00'00"
C37	3.14'	2.00'	090°00'00"
C38	3.14'	2.00'	090°00'00"
C39	3.14'	2.00'	090°00'00"
C40	3.14'	2.00'	090°00'00"
C41	3.14'	2.00'	090°00'00"
C42	30.78'	68.00'	025°55'59"
C43	31.41'	20.00'	089°59'30"
C44	31.42'	20.00'	090°00'30"
C45	31.42'	20.00'	090°00'30"
C46	31.41'	20.00'	089°59'30"

LOT	SQ. FT.	ACRES
1	1,349	0.0310
2	1,185	0.0272
3	1,185	0.0272
4	1,349	0.0310
5	1,349	0.0310
6	1,185	0.0272
7	1,185	0.0272
8	1,629	0.0374
9	1,571	0.0361
10	1,185	0.0272
11	1,185	0.0272
12	1,571	0.0361
13	1,571	0.0361
14	1,185	0.0272
15	1,185	0.0272
16	1,571	0.0361
17	1,865	0.0428
18	1,185	0.0272
19	1,185	0.0272
20	1,571	0.0361
21	1,571	0.0361
22	1,185	0.0272
23	1,185	0.0272
24	1,865	0.0428
25	1,865	0.0428
26	1,185	0.0272
27	1,185	0.0272
28	1,571	0.0361
29	1,865	0.0428
30	1,185	0.0272
31	1,185	0.0272
32	1,865	0.0428
33	1,865	0.0428

LOT	SQ. FT.	ACRES
34	1,185	0.0272
35	1,185	0.0272
36	1,185	0.0272
37	1,185	0.0272
38	1,571	0.0361
39	1,571	0.0361
40	1,185	0.0272
41	1,185	0.0272
42	1,185	0.0272
43	1,185	0.0272
44	1,349	0.0310
45	1,349	0.0310
46	1,185	0.0272
47	1,185	0.0272
48	1,185	0.0272
49	1,185	0.0272
50	1,571	0.0361
51	1,571	0.0361
52	1,185	0.0272
53	1,185	0.0272
54	1,185	0.0272
55	1,185	0.0272
56	1,349	0.0310
57	1,349	0.0310
58	1,185	0.0272
59	1,185	0.0272
60	1,185	0.0272
61	1,185	0.0272
62	1,571	0.0361
63	1,865	0.0428
64	1,185	0.0272
65	1,185	0.0272
66	1,185	0.0272

LOT	SQ. FT.	ACRES
67	1,185	0.0272
68	1,865	0.0428
69	1,349	0.0310
70	1,185	0.0272
71	1,185	0.0272
72	1,629	0.0374
73	1,629	0.0374
74	1,185	0.0272
75	1,185	0.0272
76	1,349	0.0310
77	1,571	0.0361
78	1,185	0.0272
79	1,185	0.0272
80	1,865	0.0428
81	1,865	0.0428
82	1,185	0.0272
83	1,185	0.0272
84	1,865	0.0428
85	1,865	0.0428
86	1,185	0.0272
87	1,185	0.0272
88	1,865	0.0428
89	1,865	0.0428
90	1,185	0.0272
91	1,185	0.0272
92	1,865	0.0428
93	1,349	0.0310
94	1,185	0.0272
95	1,185	0.0272
96	1,185	0.0272
97	1,349	0.0310
98	1,349	0.0310
99	1,185	0.0272

LOT	SQ. FT.	ACRES
100	1,185	0.0272
101	1,185	0.0272
102	1,349	0.0310
103	1,865	0.0428
104	1,185	0.0272
105	1,185	0.0272
106	1,185	0.0272
107	1,185	0.0272
108	1,571	0.0361
109	1,571	0.0361
110	1,185	0.0272
111	1,185	0.0272
112	1,185	0.0272
113	1,185	0.0272
114	1,865	0.0428
115	1,571	0.0361
116	1,185	0.0272
117	1,185	0.0272
118	1,185	0.0272
119	1,865	0.0428
120	1,865	0.0428
121	1,185	0.0272
122	1,185	0.0272
123	1,185	0.0272
124	1,865	0.0428
125	1,571	0.0361
126	1,185	0.0272
127	1,185	0.0272
128	1,865	0.0428
129	1,629	0.0374
130	1,185	0.0272
131	1,185	0.0272
132	1,629	0.0374

TRACT	SQ. FT.	ACRES	DESCRIPTION
TRACT A	77,275	1.7740	COMMON AREA OPEN SPACE, LANDSCAPE, RETENTION, PUF
TRACT B	42,826	0.9831	COMMON AREA OPEN SPACE, LANDSCAPE, RETENTION, PUF
TRACT C	10,358	0.2378	COMMON AREA OPEN SPACE, LANDSCAPE, RETENTION, PUF
TRACT D	71,345	1.6378	COMMON AREA OPEN SPACE, LANDSCAPE, RETENTION, PUF
TRACT E	81,125	1.8624	PRIVATE STREET, UTILITY ACCESS, PUF, EMERGENCY & SANITATION VEHICLE ACCESS
TRACT F	2,604	0.0598	PRIVATE SHARED DRIVE, UTILITY ACCESS, PUF
TRACT G	2,689	0.0617	PRIVATE SHARED DRIVE, UTILITY ACCESS, PUF
TRACT H	2,724	0.0625	PRIVATE SHARED DRIVE, UTILITY ACCESS, PUF
TRACT I	2,961	0.0680	PRIVATE SHARED DRIVE, UTILITY ACCESS, PUF
TRACT J	2,497	0.0573	PRIVATE SHARED DRIVE, UTILITY ACCESS, PUF
TRACT K	2,765	0.0635	PRIVATE SHARED DRIVE, UTILITY ACCESS, PUF
TRACT L	2,772	0.0636	PRIVATE SHARED DRIVE, UTILITY ACCESS, PUF
TRACT M	4,779	0.1097	PRIVATE SHARED DRIVE, UTILITY ACCESS, PUF
TRACT N	2,715	0.0623	PRIVATE SHARED DRIVE, UTILITY ACCESS, PUF