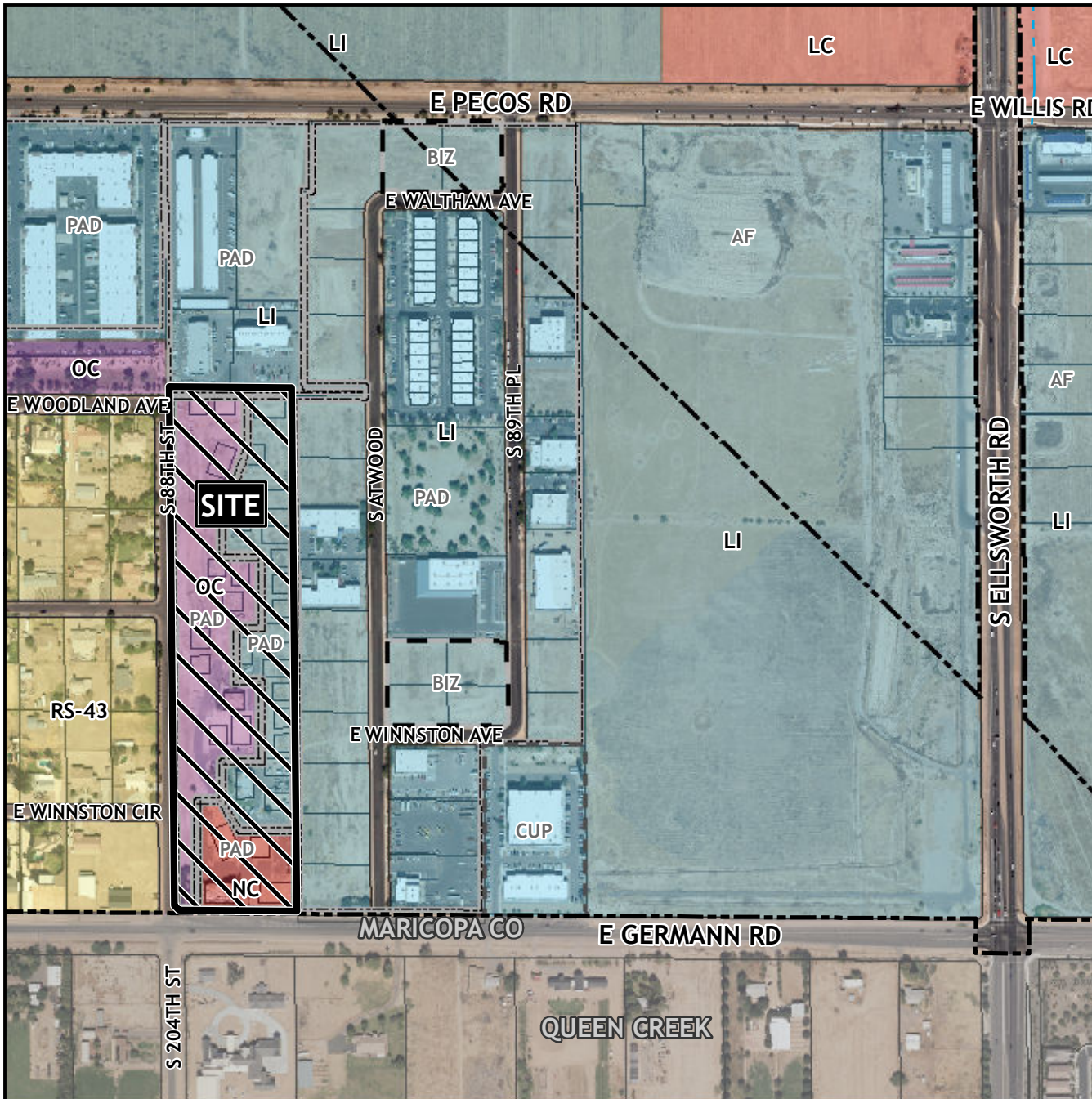


Planning and Zoning Vicinity Map: ZON24-00030



Case Details

CASE:

ZON24-00030

SITE / ADDRESS:

(District 6). Within the 8800 block of East Germann Road (north side) and the 7300 to 7600 blocks of South 88th Street (east side). Located north of Germann Road and west of Ellsworth Road. (16± acres).

REQUEST:

Rezone from Office Commercial with a Planned Area Development Overlay (OC-PAD), Neighborhood Commercial with a Planned Area Development Overlay (NC-PAD) and Light Industrial with a Planned Area Development Overlay (LI-PAD) to OC-PAD, NC-PAD and LI-PAD to modify the existing PAD to allow for phasing of the proposed business park.

