

PROJECT INFORMATION

PROPOSED BUILDING RENOVATION
STINE - HAWAIIAN BROS - STR: 95
1440 WEST SOUTHERN AVENUE • MESA, AZ 85202

PROFESSIONAL SEAL

PRELIMINARY DATES

JUNE 27, 2024
JULY 9, 2024
AUG. 5, 2024
SEPT. 6, 2024
OCT. 8, 2024
OCT. 15, 2024

NOT FOR CONSTRUCTION

JOB NUMBER
240135500

SHEET NUMBER
X2.0

EXTERIOR MATERIAL KEY

- THIN BRICK**
MFR: GLEN-GERY
STYLE: EXTRUDED
TEXTURE: SMOOTH
COLOR: ROMERO (GROUT COLOR: G-501)
- THIN BRICK**
MFR: GLEN-GERY
STYLE: EXTRUDED
TEXTURE: SMOOTH
COLOR: ASPEN WHITE (GROUT COLOR: G-501)
- WOOD LOOK ALUMINUM SIDING & SOFFIT (LONGBOARD)**
PRODUCT: LONGBOARD 6" - V-GROOVE SIDING PANEL
MATERIAL: HEAVY GAUGE ALUMINUM
COLOR: DARK NATIONAL WALNUT
- EFS**
MFR: STOCAS
TEXTURE: SANDBLAST (SEE DETAIL ON SHEET FOR REVEALS)
COLOR: PAINTED SW6767 AQUARIUM
- VINYL SCREEN**
PATTERN: WAVE GRAPHIC
FRAME AND SIGNAGE PROVIDED BY SIGNAGE VENDOR
COLOR: WHITE/GRAY
- METAL STRUCTURE**
COLOR: PAINTED SW7674 PEPPERCORN
- METAL COPING**
MATERIAL: PAC CLAD 24 GAUGE STEEL
COLOR: CHARCOAL
- EFS SWEEP**
MFR: STOCAS
TEXTURE: SANDBLAST (2"X12" SWEEP)
COLOR: SW7005 PURE WHITE

MATERIALS

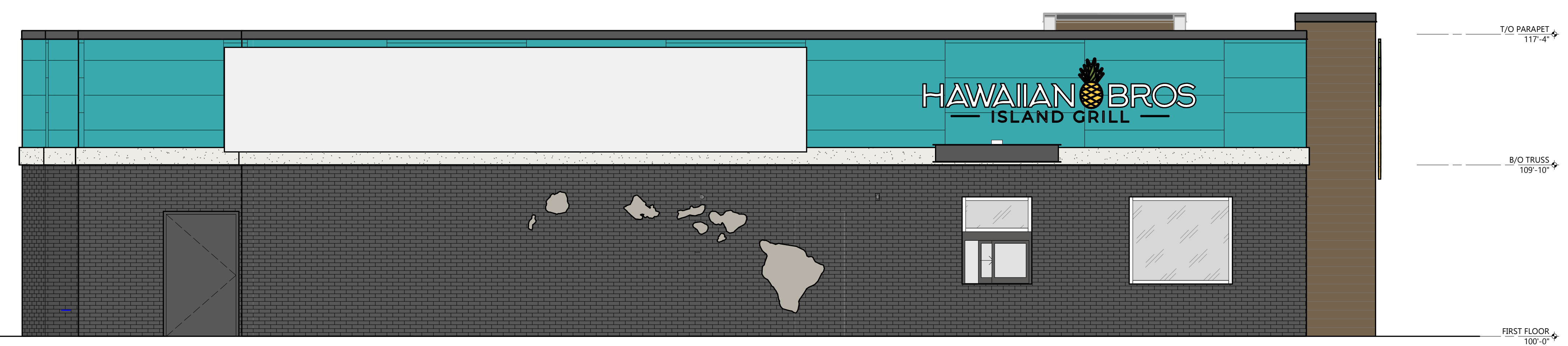
THIN BRICK - ROMERO	376 S.F. - 27.4%
THIN BRICK - ASPEN WHITE	157 S.F. - 11.5%
LONGBOARD SIDING	173 S.F. - 12.6%
EFS - AQUARIUM	407 S.F. - 29.7%
METAL COPING/TRIM	49 S.F. - 3.5%
EFS SWEEP - WHITE	66 S.F. - 4.8%
GLAZING/STOREFRONT	143 S.F. - 10.5%
TOTAL WALL AREA:	1,371 S.F.



EAST ELEVATION
SCALE: 1/4" = 1'-0"

MATERIALS

THIN BRICK - ROMERO	643 S.F. - 47.2%
LONGBOARD SIDING	71 S.F. - 5.2%
EFS - AQUARIUM	457 S.F. - 33.6%
METAL COPING/TRIM	68 S.F. - 5.0%
EFS SWEEP - WHITE	74 S.F. - 5.4%
GLAZING/STOREFRONT	49 S.F. - 3.6%
TOTAL WALL AREA:	1,362 S.F.



(MCDONALDS) WEST ELEVATION
SCALE: 1/4" = 1'-0"

MATERIALS

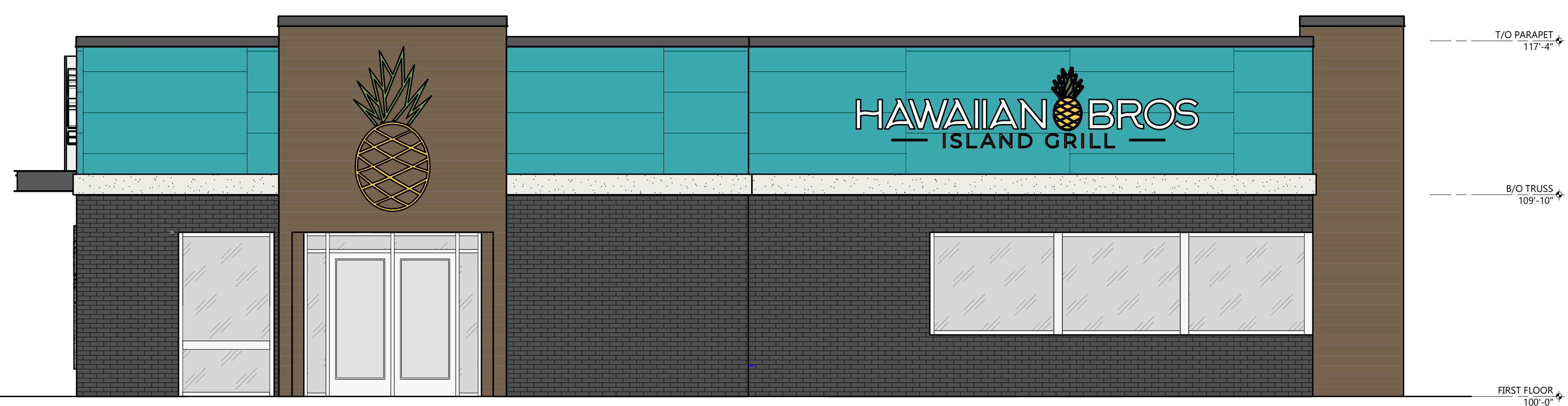
THIN BRICK - ROMERO	524 S.F. - 46.0%
LONGBOARD SIDING	78 S.F. - 6.8%
EFS - AQUARIUM	374 S.F. - 32.7%
METAL COPING/TRIM	104 S.F. - 9.1%
EFS SWEEP - WHITE	61 S.F. - 5.3%
TOTAL WALL AREA:	1,141 S.F.



NORTH ELEVATION
SCALE: 1/4" = 1'-0"

MATERIALS

THIN BRICK - ROMERO	353 S.F. - 30.6%
LONGBOARD SIDING	210 S.F. - 18.2%
EFS - AQUARIUM	305 S.F. - 26.5%
METAL COPING/TRIM	34 S.F. - 3.0%
EFS SWEEP - WHITE	50 S.F. - 4.2%
GLAZING/STOREFRONT	200 S.F. - 17.4%
TOTAL WALL AREA:	1,152 S.F.



(W SOUTHERN AVE) SOUTH ELEVATION
SCALE: 1/4" = 1'-0"

© 2024 EXCEL ENGINEERING, INC. All Rights Reserved. EXCEL ENGINEERING, INC. 10/15/2024 14:18:18 AM