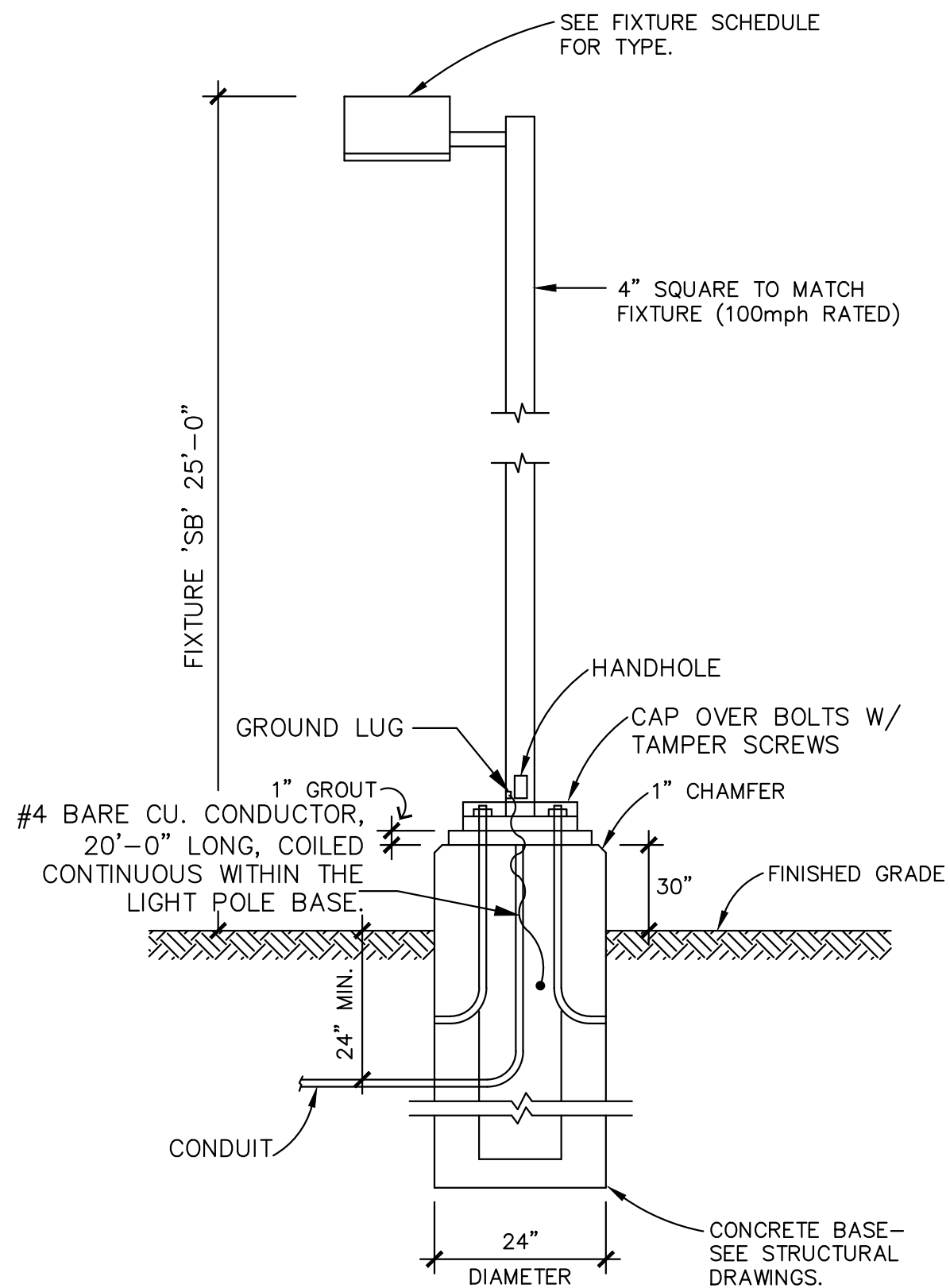


**LIGHT POLE AND FIXTURE 'SD'**

NOTE:  
CONTRACTOR SHALL PROVIDE NEW POLE BASES WHERE INDICATED ON PLANS.  
LIGHTING FIXTURE POLE DETAILS AND DESCRIPTIONS ARE FOR ELECTRICAL  
REFERENCES ONLY. PLEASE REFER TO ARCHITECTURAL SHEETS FOR POLE  
BASE DETAILS.

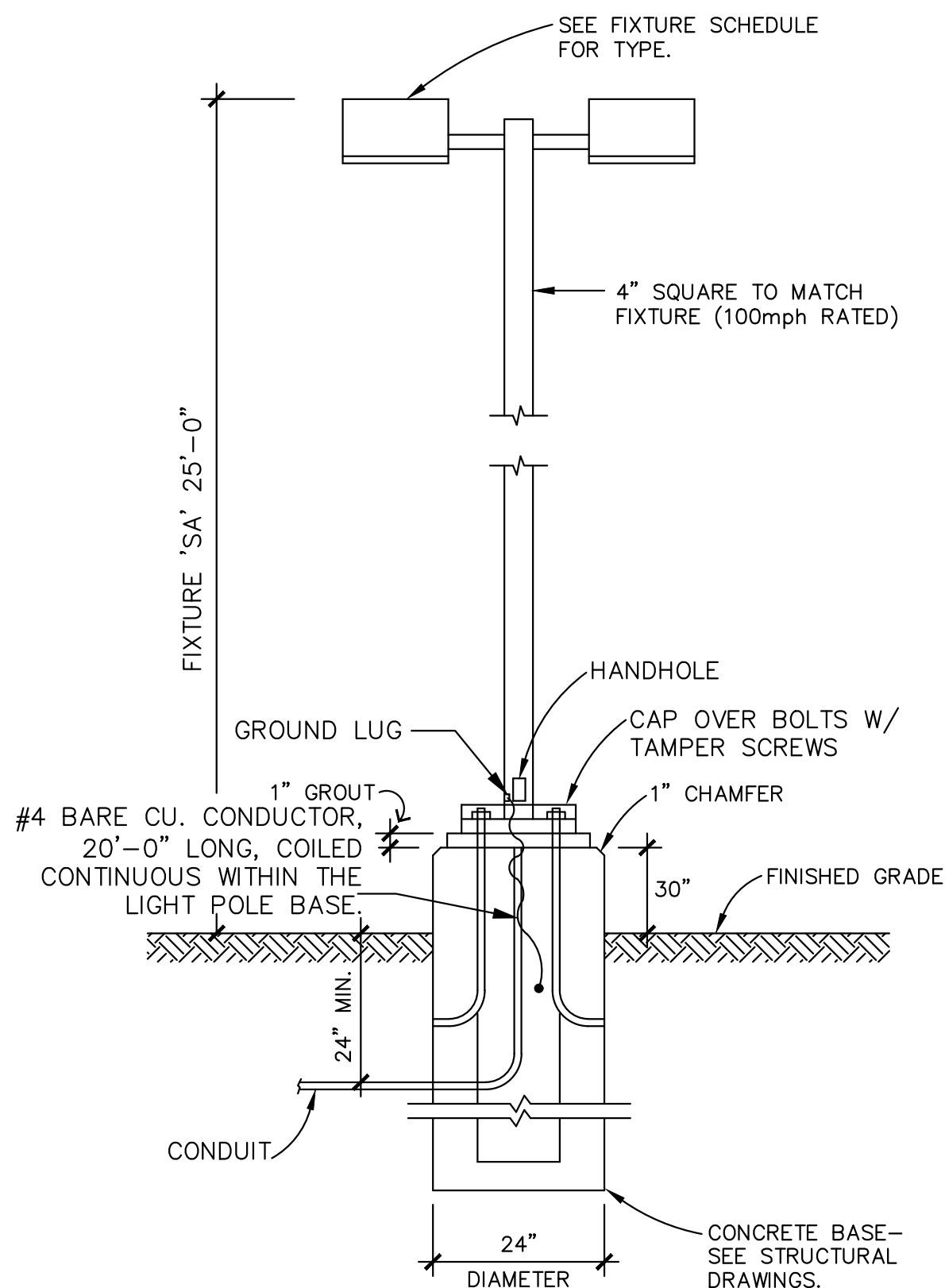
N.T.S.



**LIGHT POLE AND FIXTURE 'SB'**

NOTE:  
CONTRACTOR SHALL PROVIDE NEW POLE BASES WHERE INDICATED ON PLANS.  
LIGHTING FIXTURE POLE DETAILS AND DESCRIPTIONS ARE FOR ELECTRICAL  
REFERENCES ONLY. PLEASE REFER TO ARCHITECTURAL SHEETS FOR POLE  
BASE DETAILS.

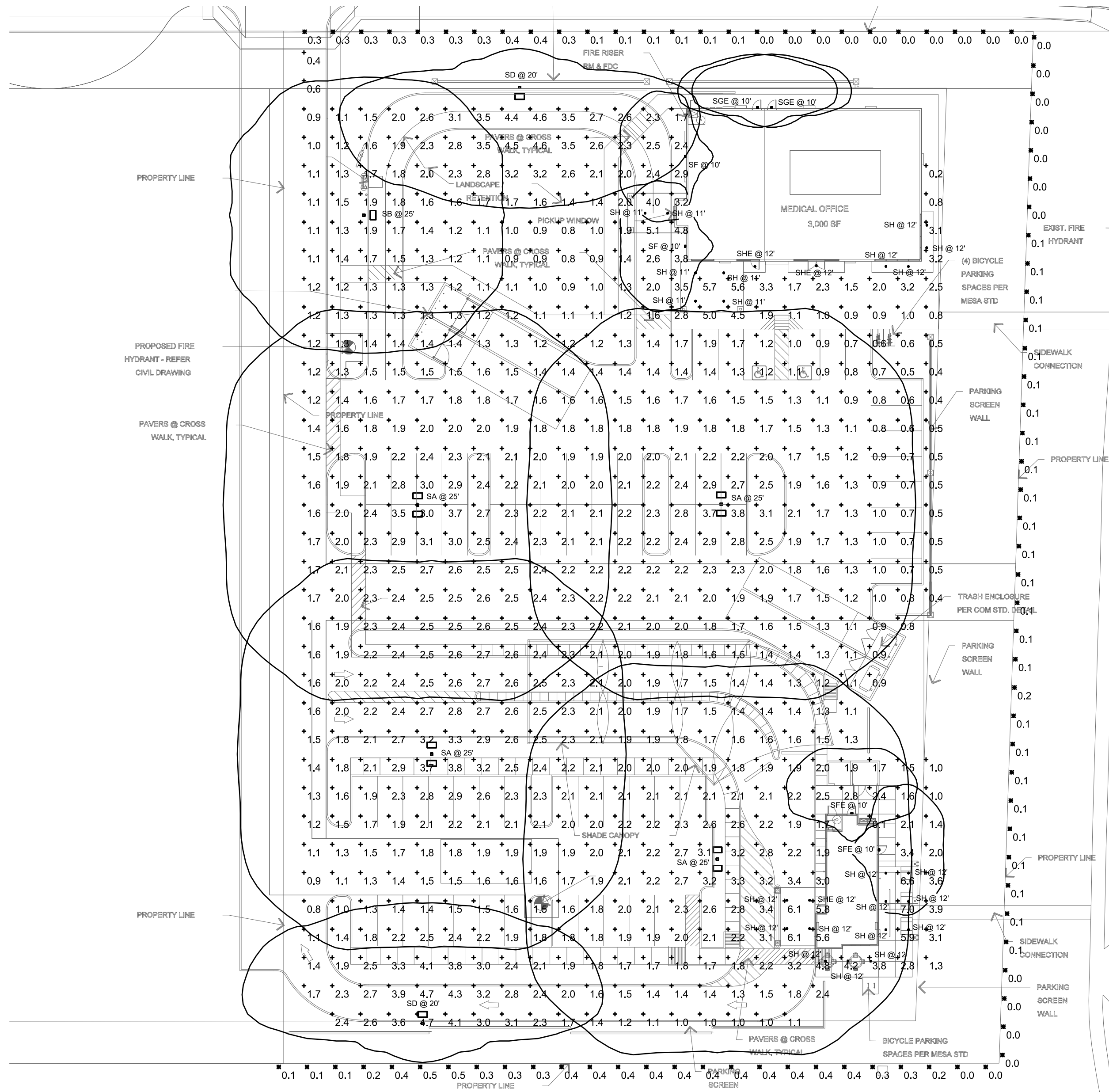
N.T.S.



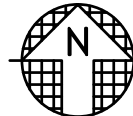
**LIGHT POLE AND FIXTURE 'SA'**

NOTE:  
CONTRACTOR SHALL PROVIDE NEW POLE BASES WHERE INDICATED ON PLANS.  
LIGHTING FIXTURE POLE DETAILS AND DESCRIPTIONS ARE FOR ELECTRICAL  
REFERENCES ONLY. PLEASE REFER TO ARCHITECTURAL SHEETS FOR POLE  
BASE DETAILS.

N.T.S.



**1 EXTERIOR PHOTOMETRIC**  
SCALE: 1/4"=1'-0"



Schedule								
Symbol	Label	Quantity	Manufacturer	Catalog Number	Description	Lamp	Filename	Lumens Per Lamp
	SA	4	Lithonia Lighting	(2) DSX0 LED P6 30K TSW MVOLT SPA (FINISH) / SSS 22.5' W/2.5' BASE	TWIN-HEAD DSX0 LED P6 30K TSW MVOLT	LED - 3000K	DSX0_LED_P6_30K_TS_W_MVOLT.ies	15285
	SB	1	Lithonia Lighting	DSX0 LED P6 30K TSW MVOLT SPA (FINISH) / SSS 22.5' W/2.5' BASE	DSX0 LED P6 30K TSW MVOLT	LED - 3000K	DSX0_LED_P6_30K_TS_W_MVOLT.ies	15285
	SD	2	Lithonia Lighting	DSX0 LED P6 30K T2M MVOLT SPA HS (FINISH) / SSS 17.5' W/2.5' BASE	DSX0 LED P6 30K T2M MVOLT with housesside shield	LED - 3000K	DSX0_LED_P6_30K_T2_M_MVOLT_HS.ies	12118
	SF	2	Lithonia Lighting	WDG2 LED P2 30K 80CRI T4M MVOLT (FINISH)	WDG2 LED WITH P2 - PERFORMANCE PACKAGE, 3000K, 80CRI, TYPE 4 MEDIUM OPTIC	LED - 3000K	WDG2_LED_P2_30K_80CRI_T4M.ies	1922
	SFE	2	Lithonia Lighting	WDG2 LED P2 30K 80CRI T4M MVOLT E20WC (FINISH)	WDG2 LED WITH P2 - PERFORMANCE PACKAGE, 3000K, 80CRI, TYPE 4 MEDIUM OPTIC W/EM BATTERY PACK	LED - 3000K	WDG2_LED_P2_30K_80CRI_T4M.ies	1922
	SGE	2	Lithonia Lighting	WDG2 LED P2 30K 80CRI T2M MVOLT E20WC (FINISH)	WDG2 LED WITH P2 - PERFORMANCE PACKAGE, 3000K, 80CRI, TYPE 2 MEDIUM OPTIC W/EM BATTERY PACK	LED - 3000K	WDG2_LED_P2_30K_80CRI_T2M.ies	1963
	SH	22	DMF LIGHTING	DRDH N JO / DRDSS 4 R 10 9 3	4IN SURFACE MOUNTED DOWNLIGHT	LED - 3000K	DRDSS-4R-10930.ies	1015
	SHE	3	DMF LIGHTING	DRDH N JO 100SEM / DRDSS 4 R 10 9 3 EM	4IN SURFACE MOUNTED DOWNLIGHT W/EM BATTERY PACK	LED - 3000K	DRDSS-4R-10930.ies	1015

Statistics					
Description	Symbol	Avg	Max	Min	Max/Min
SITE - FC @ GRADE	+	2.0 fc	7.0 fc	0.1 fc	70.0:1
PROPERTY LINE - FC @ 3' AFG	X	0.2 fc	0.5 fc	0.0 fc	N/A

## RECKER AND 202 RETAIL

NWC OF RECKER ROAD AND LOOP 202  
3358 N RECKER ROAD MESA AZ 85215

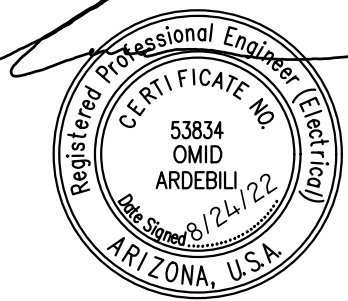
copyright 2018, all rights reserved. this drawing is an instrument of service. it is the property of irka architects, inc. and may not be reproduced or reprinted without written permission of the corporation.

design by: JO  
drawn by: FK  
checked by: PC

**EO.1**  
project: 21065  
DATE: xx-xx-19

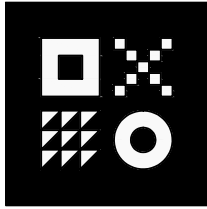


**IRKA**  
ARCHITECTS  
2333 EAST THOMAS ROAD, PHOENIX, ARIZONA 85016  
602-955-3900



1 / 2018 Application for  
EXTERIOR PHOTOMETRIC

NOTICE OF ALTERNATE BILLING OR PAYMENT CYCLE:  
THIS CONTRACT MAY ALLOW THE OWNER TO REQUIRE THE SUBMISSION OF BILLING OR ESTIMATES IN BILLING CYCLES OTHER THAN THIRTY DAYS. THIS CONTRACT MAY ALLOW OWNER TO MAKE PAYMENT CERTIFICATION AND APPROVAL OF BILLING AND ESTIMATES. A WRITTEN DESCRIPTION OF SUCH OTHER BILLING CYCLE APPLICABLE TO THE PROJECT IS AVAILABLE FROM OWNER OR DESIGNATED AGENT.



**ARDEBILI**  
Engineering

Project Number: 22315 | Project Manager: PC  
7328 E Stetson Dr., Scottsdale, AZ 85251  
P: 480.626.7072 | ardebilieng.com



