



Bridge to Success Housing at EVMC

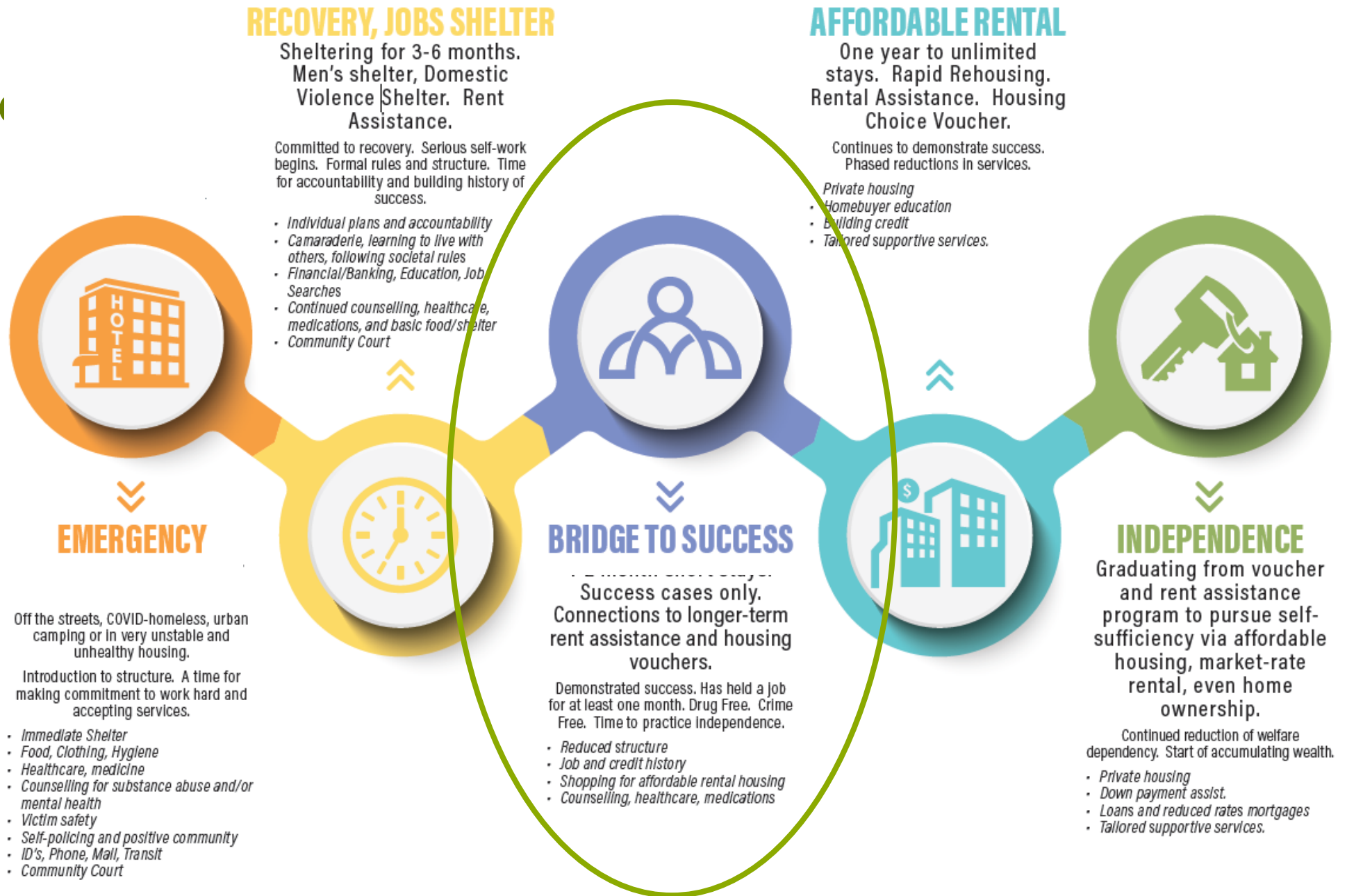
City Council Study Session

October 12, 2023

Presented by: Natalie Lewis, Deputy
City Manager



Mesa's Pathway to Housing

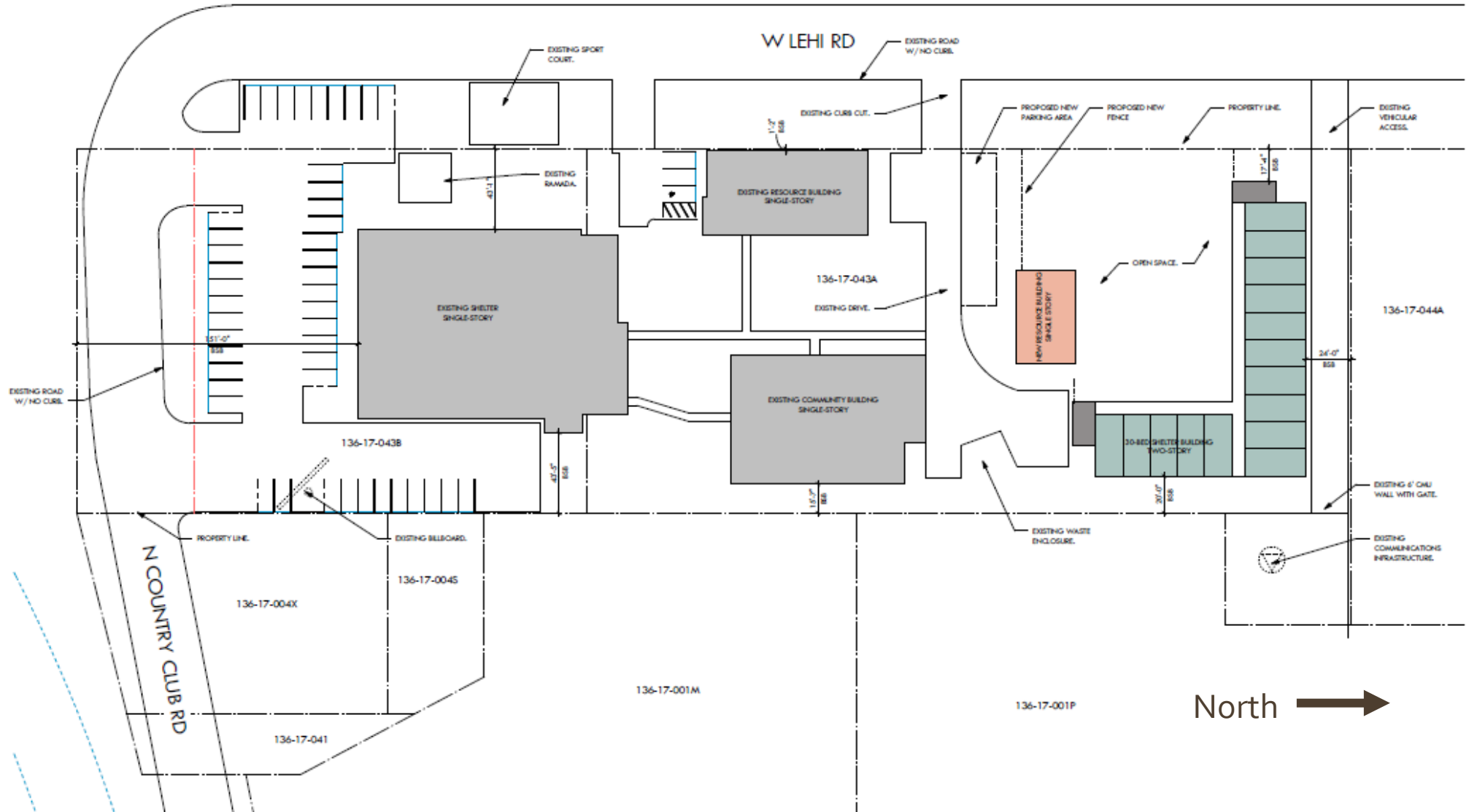


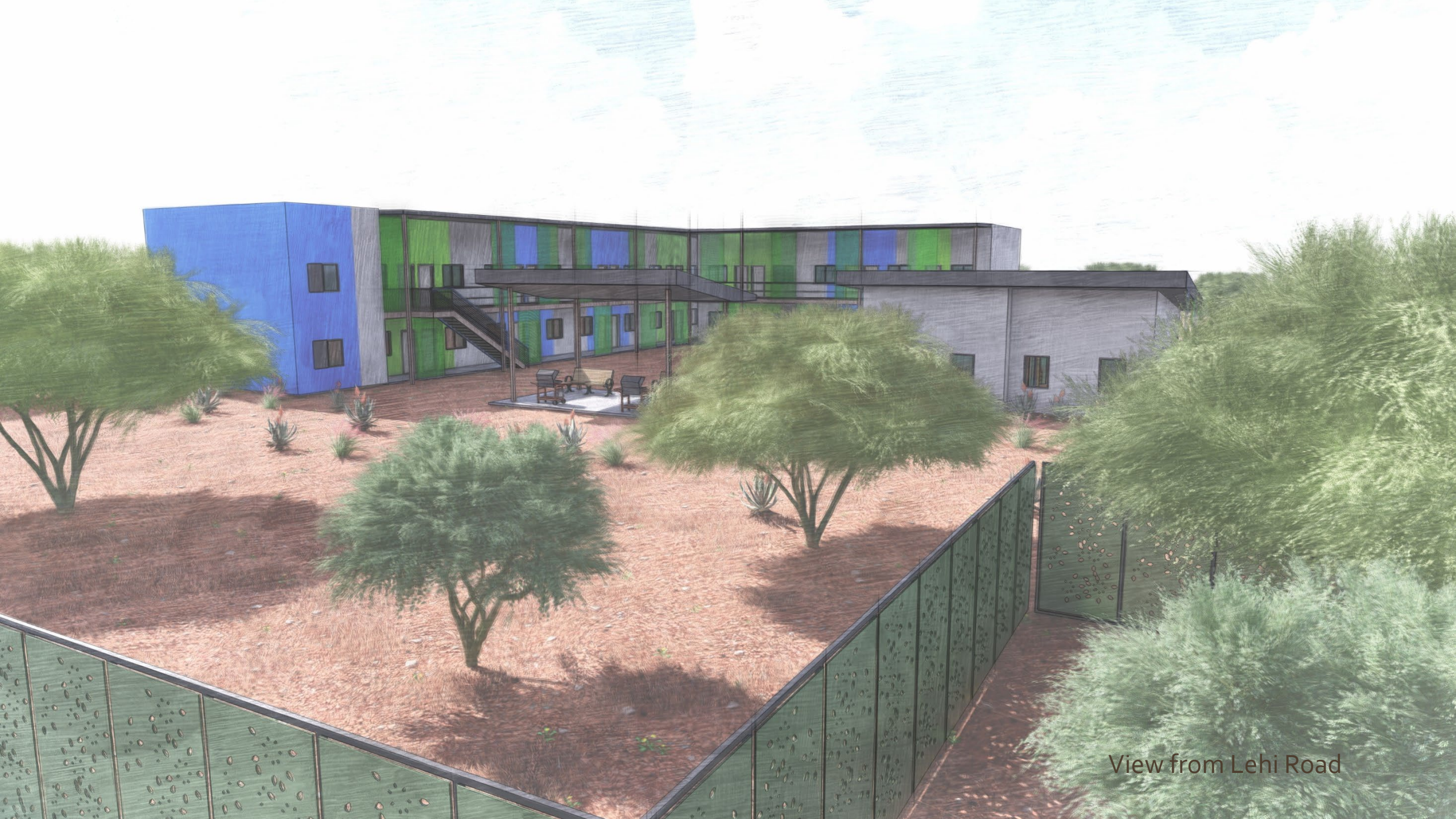
REQUEST OF COUNCIL

- Approve up to \$9.5m in Coronavirus State and Local Recovery Funds (ARPA) to fund A New Leaf's entitlement process, design, construction, development, and related costs of the following improvements and related services at the EVMC to support new bridge housing program:
 - 30 studio bridge housing units,
 - update landscaping and fencing,
 - upgrade existing building facades and other improvements to existing building(s), parking, fencing, and landscaping, and
 - initial start-up costs.

Proposed Site Plan

2 CONCEPT ARCH





View from Lehi Road



View from Lehi Road



View from Lehi Road



View from Country Club Drive



View from Country Club Drive

Other Commitments by A New Leaf

- Bridge Housing fills gap in Mesa's Pathway to Housing
- New definition of Mesa residency:
 - Direct referral from Mesa police officer or park ranger or OTS non-profit partner
 - Last known address and zip code for a minimum of one year is in Mesa
- Minimum annual average of 50% use of both emergency housing AND proposed bridge housing for Mesa residents.
- No level 2 or 3 sex offenders.
- Upgraded, master-planned campus that adds to the neighborhood.
- New model— participants remain onsite during the day.
- Onsite, basic healthcare— to minimize impacts to Mesa Fire and Medical Department.
- Unsuccessful participants transferred back to emergency housing, to Off the Streets or to another facility that best meets his needs.

REQUEST OF COUNCIL

- Approve up to \$9.5m in Coronavirus State and Local Recovery Funds (ARPA) to fund A New Leaf's entitlement process, design, construction, development, and related eligible costs of the new bridge housing program.



Bridge to Success Housing at EVMC

Questions?





mesa·az