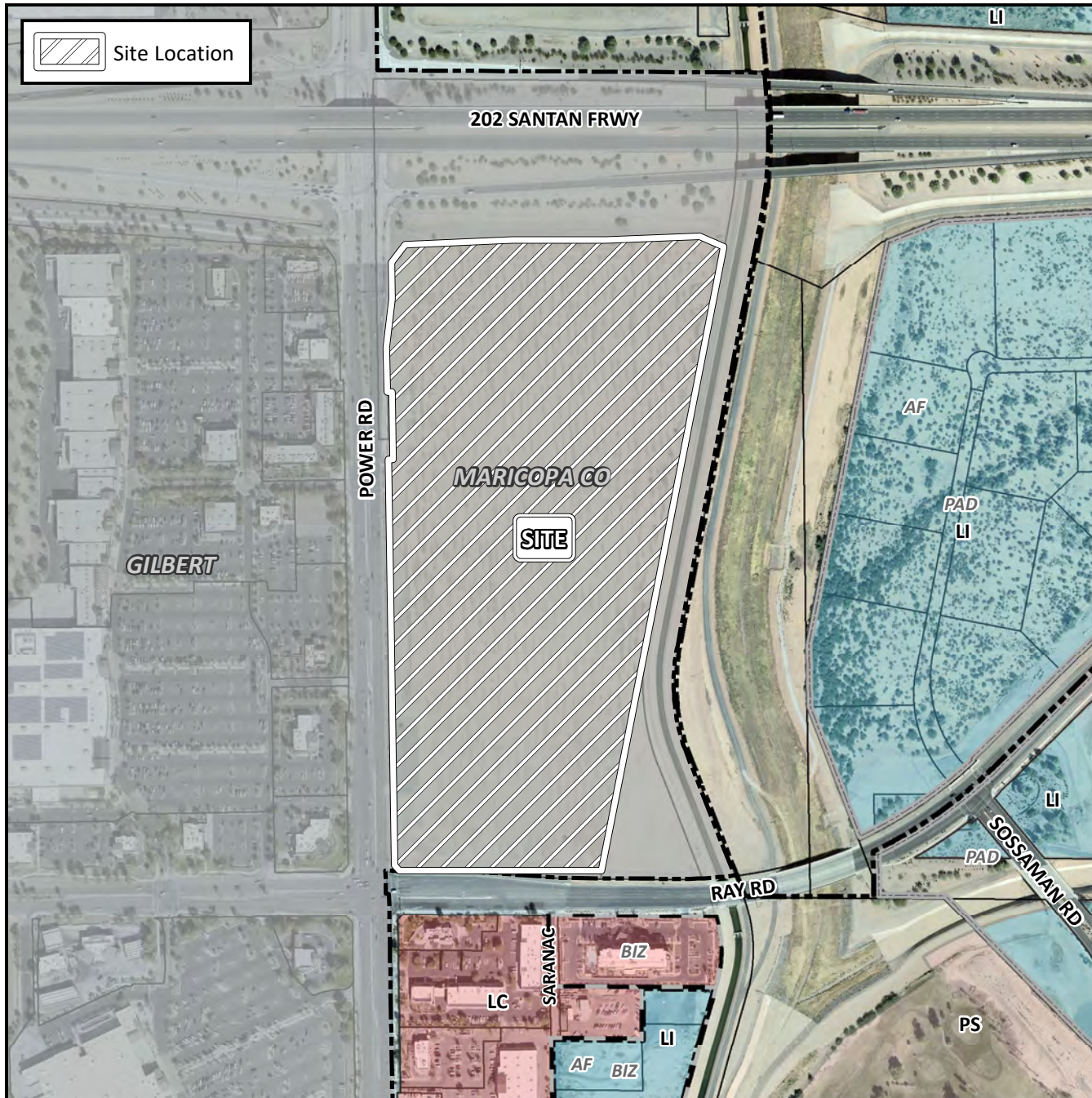


# Planning and Zoning Vicinity Map: ZON18-00775



## Case Details

**CASE:**

ZON18-00775

**PRE-PLAT :**

**SITE / ADDRESS:**

District 6. Within the 4900 to 5200 blocks of South Power Road (east side). Located south of 202 San Tan Freeway on the east side of Power Road and north of Ray Road. (58± acres)

**REQUEST:**

Rezone from AG to LC-AF-PAD; Council Use Permit to allow multi-residential, commercial entertainment, hotel, and college and commercial trade school uses in the AOA1 and AOA2 overflight areas in the LC District; and Site Plan Review. This request will allow for a mixed-use development.

