

City of Mesa

Design Review Board

DRB26-00116
Udall Office Center

Tulili Tuiteleleapaga-Howard, Planner II



Request

- Alternative Compliance
- To allow an approximately 3,808± square foot office building



Location

- 1.3± acres
- Southwest corner of McDowell Road and Val Vista Drive



Site Photo



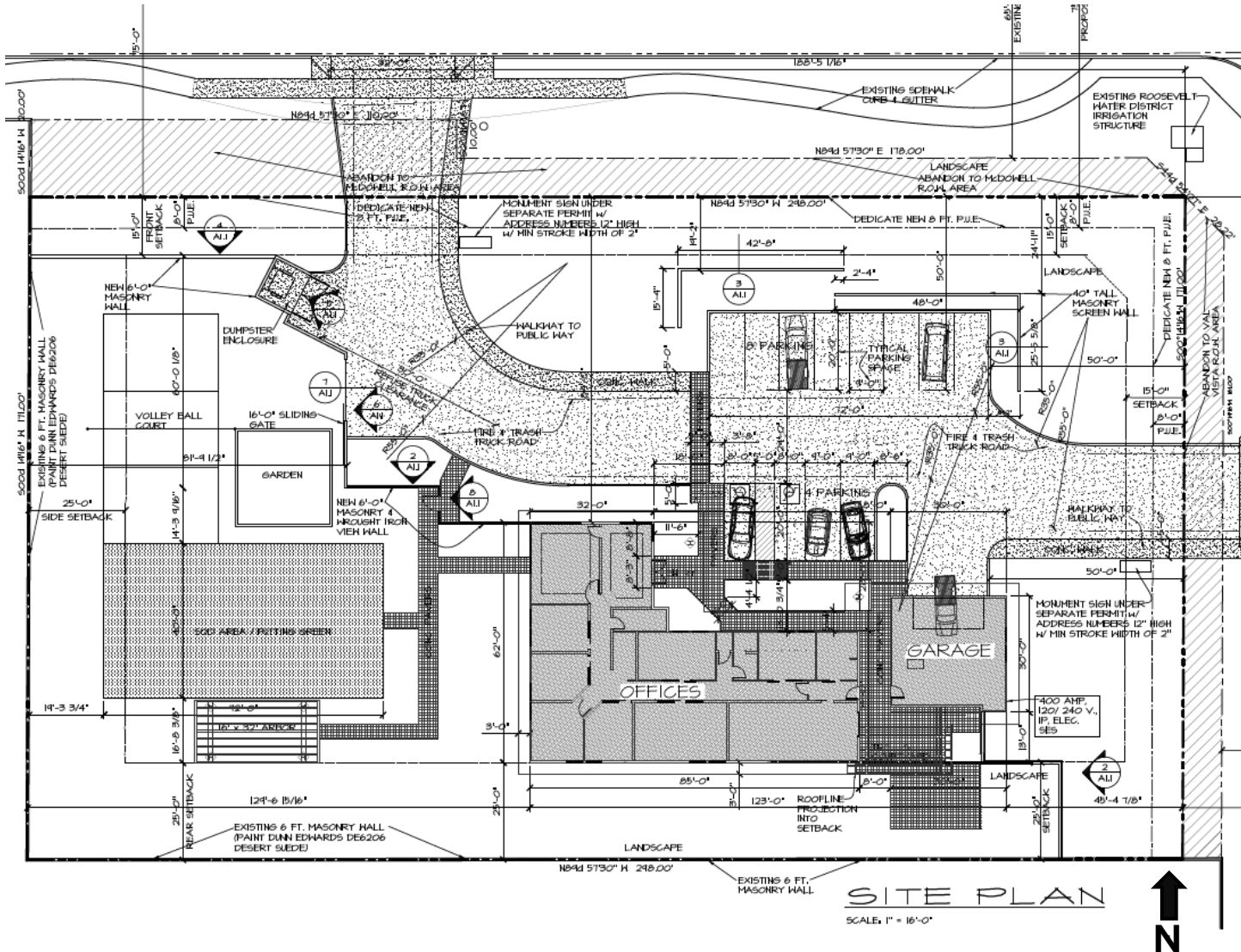
Looking south towards the site



Site Photo



Looking west towards the site

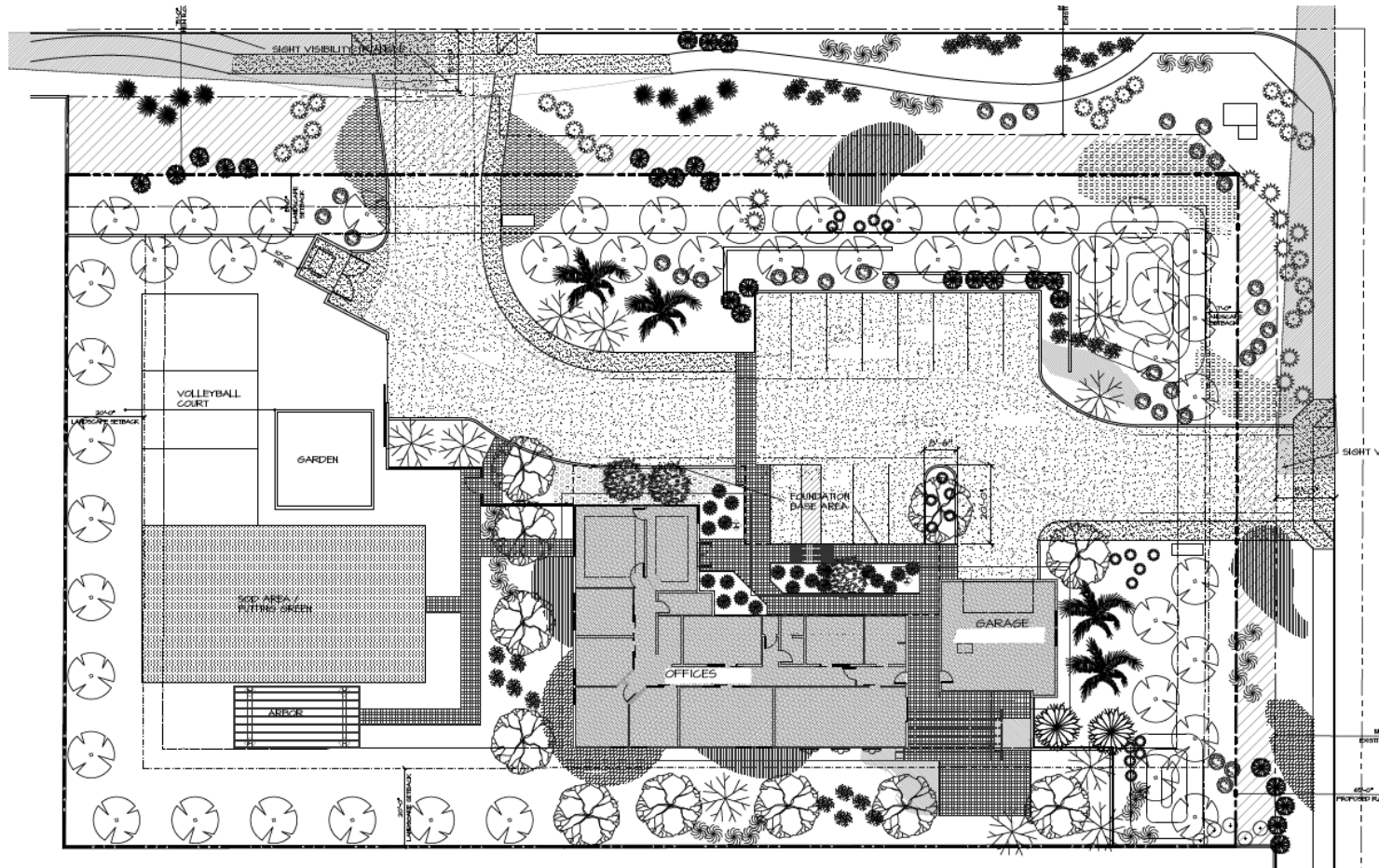


Site Plan

- 3,808 SF office building
- 869 SF garage
- Employee amenities: putting green, garden, volleyball courts



Landscape Plan



- Trees: Chitalia, Texas Mountain Laurel, Chinese Pistacia, and more
- Shrubs: Blue Hibiscus, Red Fairy Duster, Red Bird of Paradise, and more

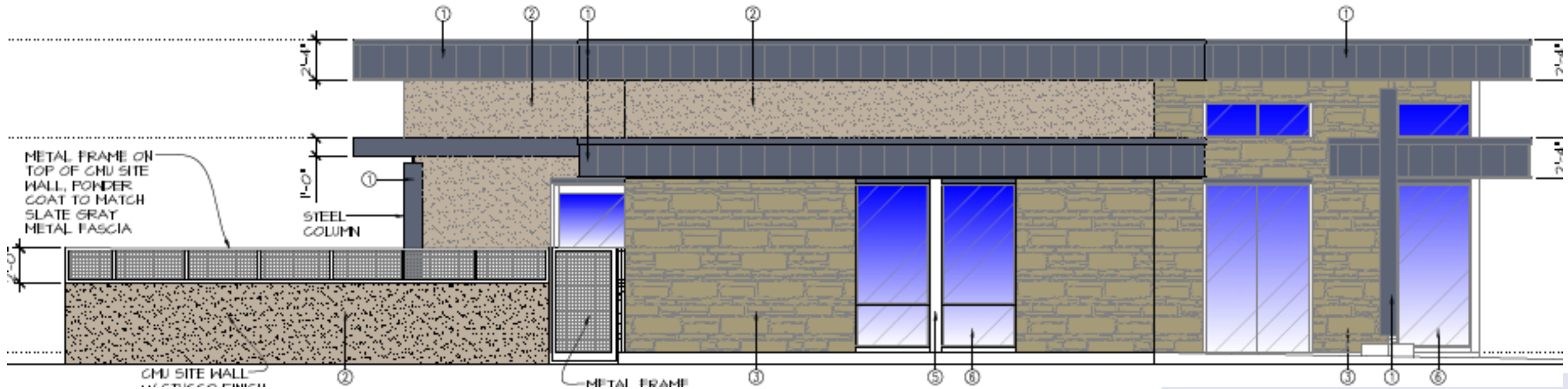


Alternative Compliance

- ✓ Materials. Primary materials shall cover no less than 75% of each building façade.
- ✓ Materials. Each primary building material shall cover at least 25% of a publicly-visible façade.



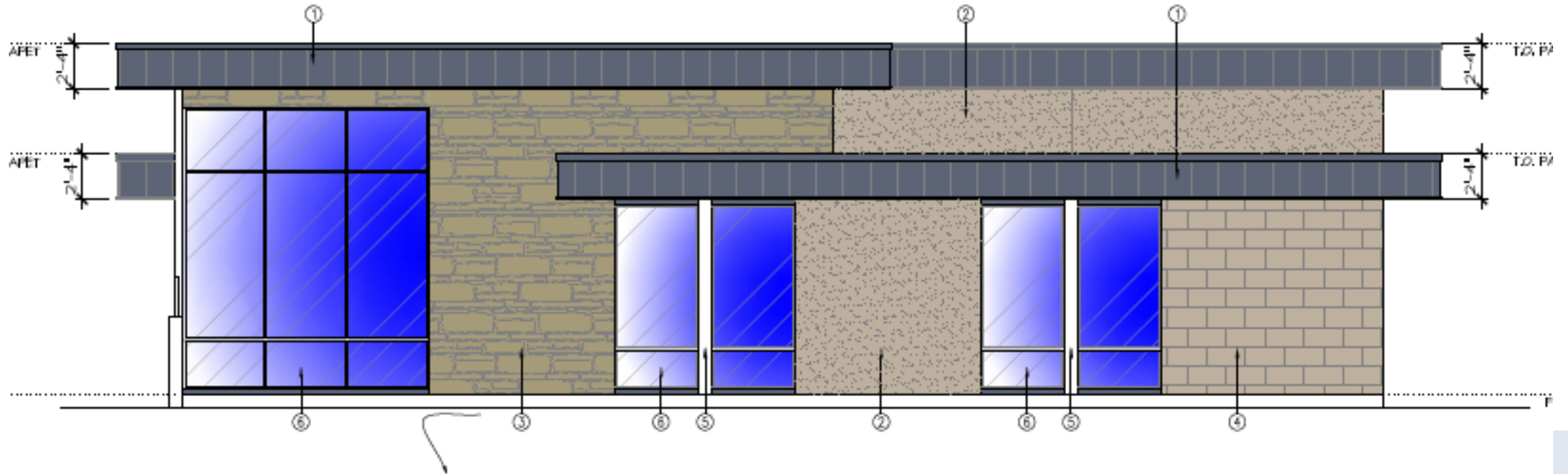
Elevations



East Elevation



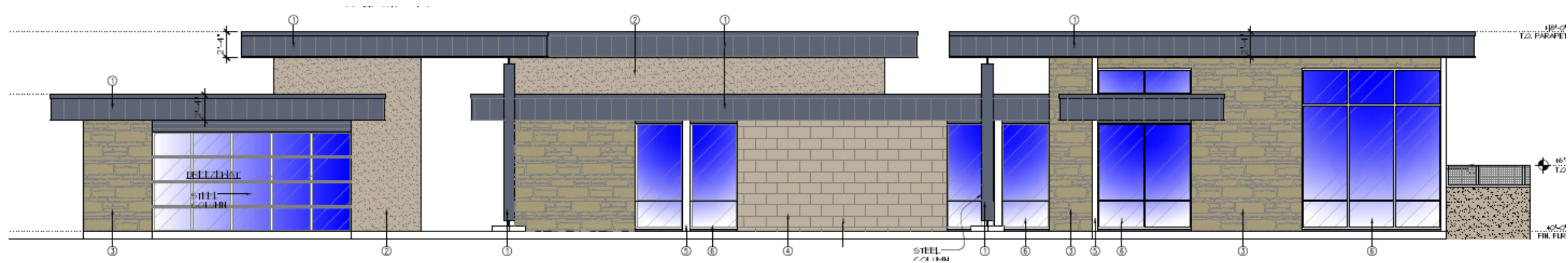
Elevations



West Elevation



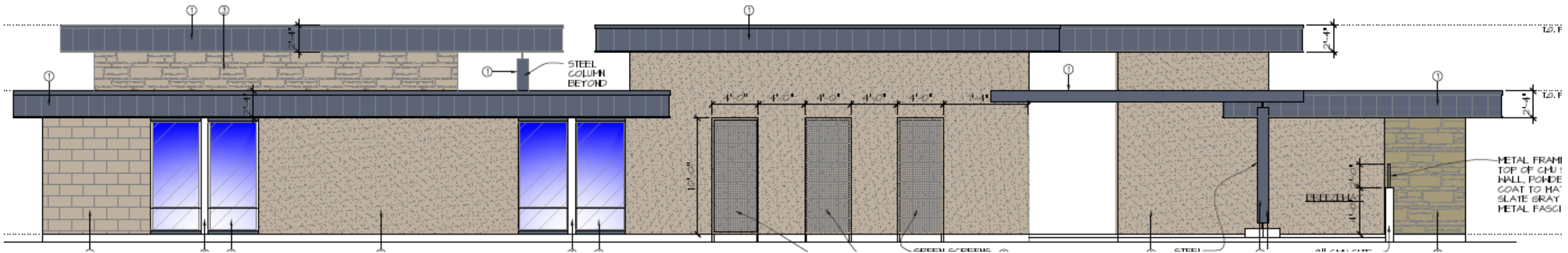
Elevations



North Elevation



Elevations

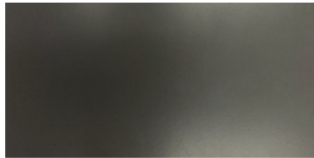


South Elevation



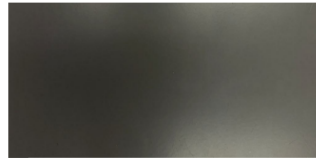
METAL FASCIA (1)

METAL PANELS
MUELLER METAL BUILDINGS
SLATE GRAY



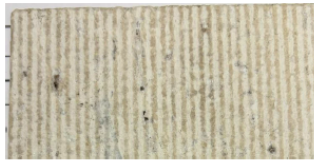
EXPOSED STEEL (2)

STEEL
PAINT TO MATCH FASCIA
SLATE GRAY



WALL TILE (5)

SOLSTICE STONE
CREMA ELEGANTE
12"x24" - TEXTURE: COMBED



GLASS MULLIONS (6)

DARK BRONZE
(GARAGE DOOR TO MATCH)



STUCCO (3)

SAND FINISH
DUNN EDWARDS - DE6206
DESERT SUEDE



STONE VENEER (4)

NORTHERN STONE SUPPLY
ROCKY MOUNTAIN GRANITE LEDGE
2", 4", 6"



TINTED GLASS (7)

MEDIUM BRONZE
(GARAGE DOOR TO MATCH)



Materials & Colors

- Stucco
- Stone Veneer
- Wall Tile
- Exposed Steel
- Metal Fascia
- Tinted Glass



Renderings



Looking south from McDowell Road



Renderings



Aerial view from McDowell Road



Renderings



Looking west from Val Vista Drive



Renderings



Aerial view from Val Vista Drive



Findings

Staff is seeking your review and recommendation on the following:

- ✓ Alternative Compliance

City of Mesa

Design Review Board