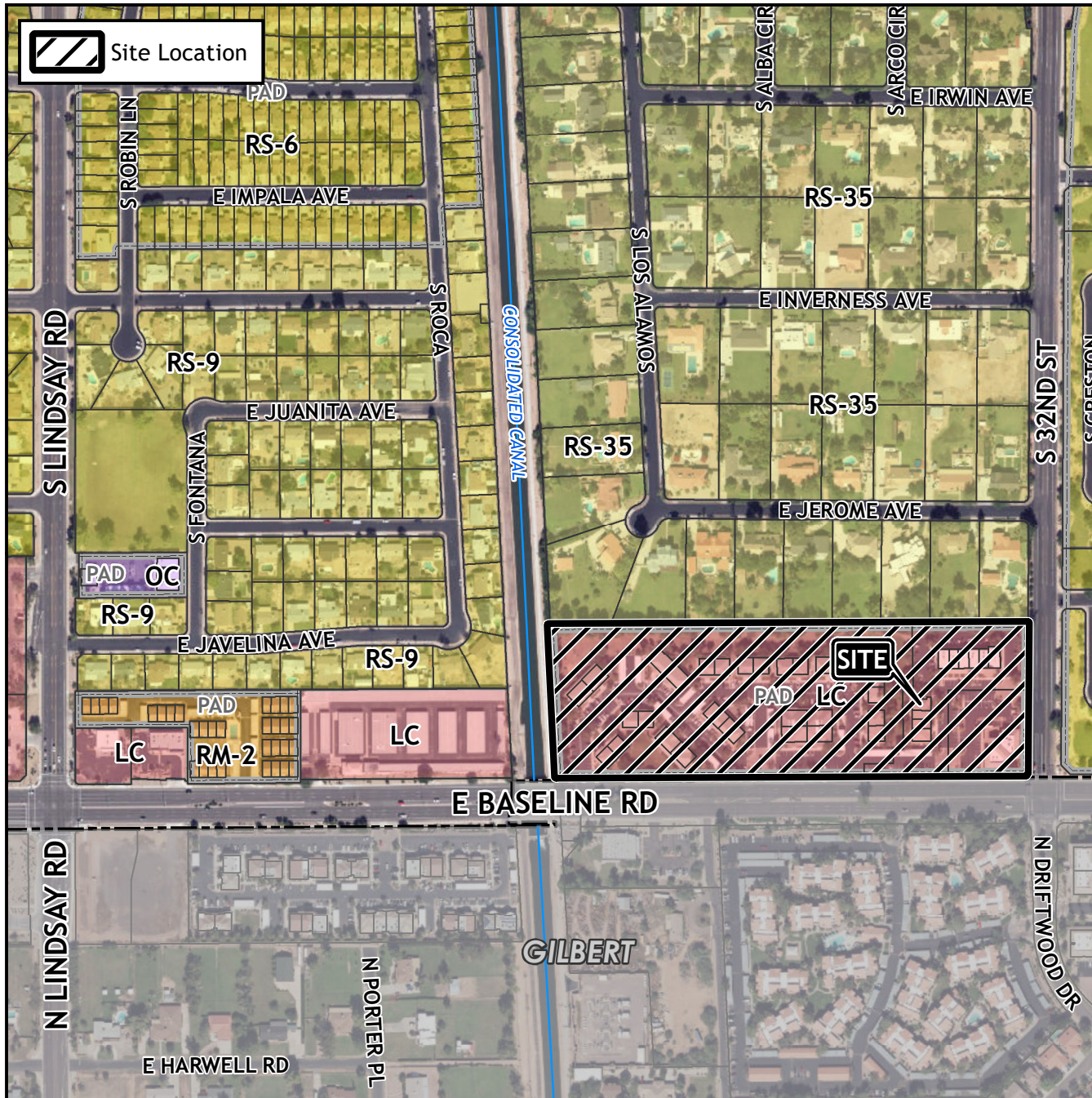


Board of Adjustment Vicinity Map: BOA23-00392

Case Details



Case:

BOA23-00392

Site / Address:

(District 2). 3130 E Baseline Road.
 Located east of South Lindsay Road and north of East Baseline Road.

Request:

Requesting a modification to an existing Comprehensive Sign Plan in the Limited Commercial with a Planned Area Development overlay (LC-PAD) zoning district.

