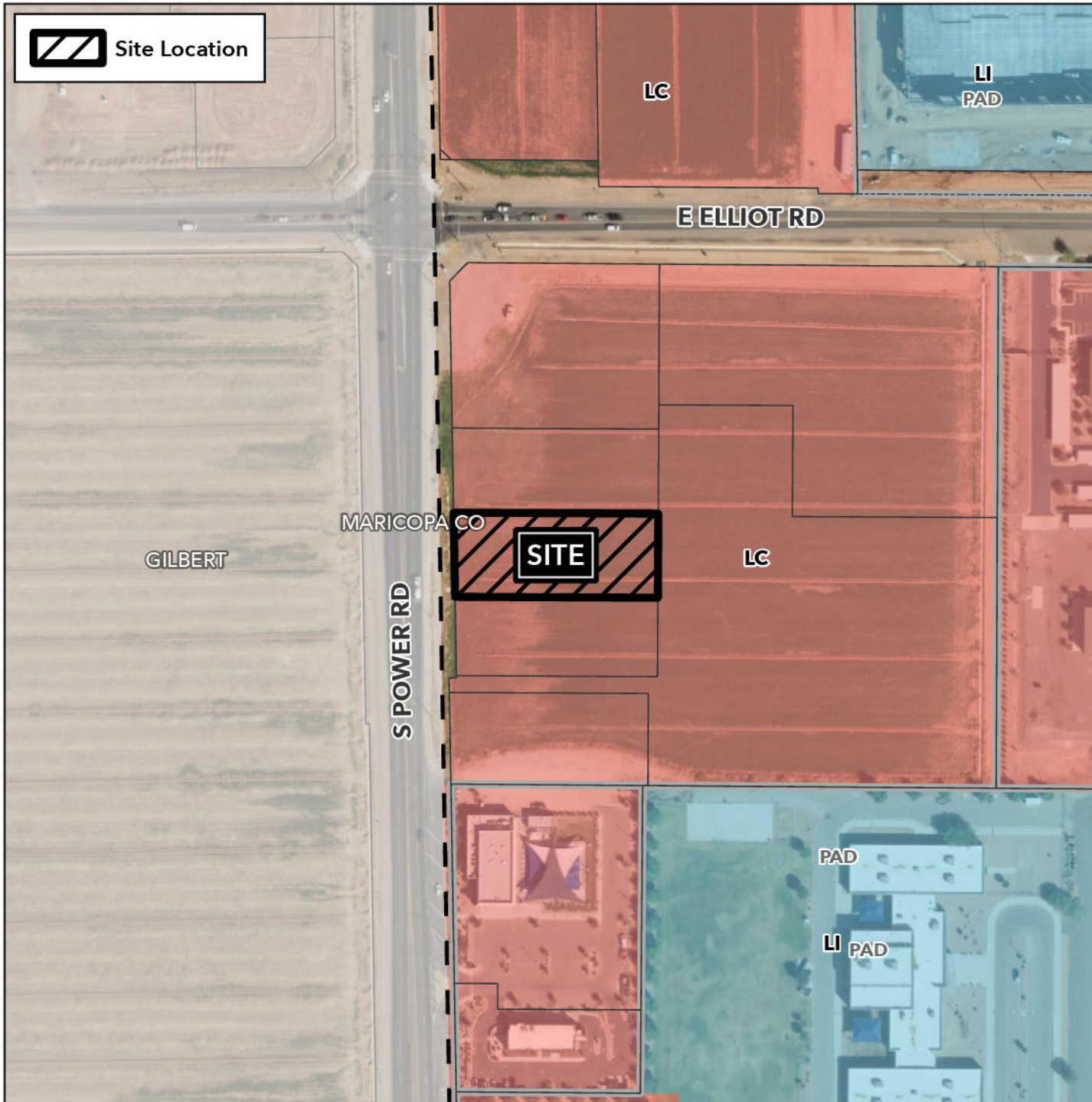


Design Review Vicinity Map: DRB24-00990

Case Details

 Site Location



Case:

DRB24-00990

Site / Address:

(District 6) 0.7± acres approximately
375 feet south of the southeast corner of
Power Road and Elliot Road.

Request:

Design Review for a Limited Service
Restaurant with Drive-thru Facilities.

