



# Design Review Board



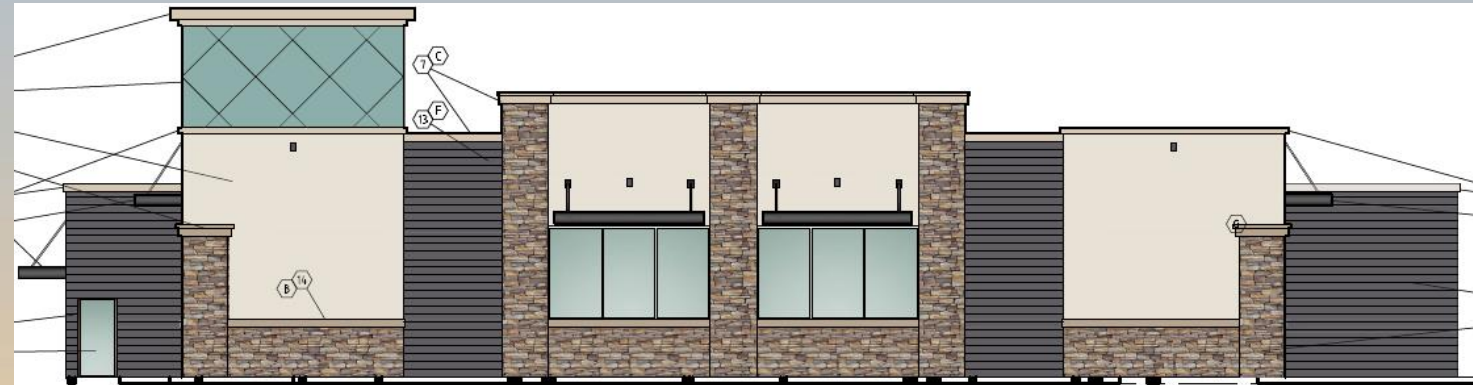
# DRB23-00297

## Ultra Clean Car Wash – Rinse n Ride



# Request

- Design Review
- To allow for the development of a Car Wash







# Location

- East of Greenfield Road
- North of Brown Road

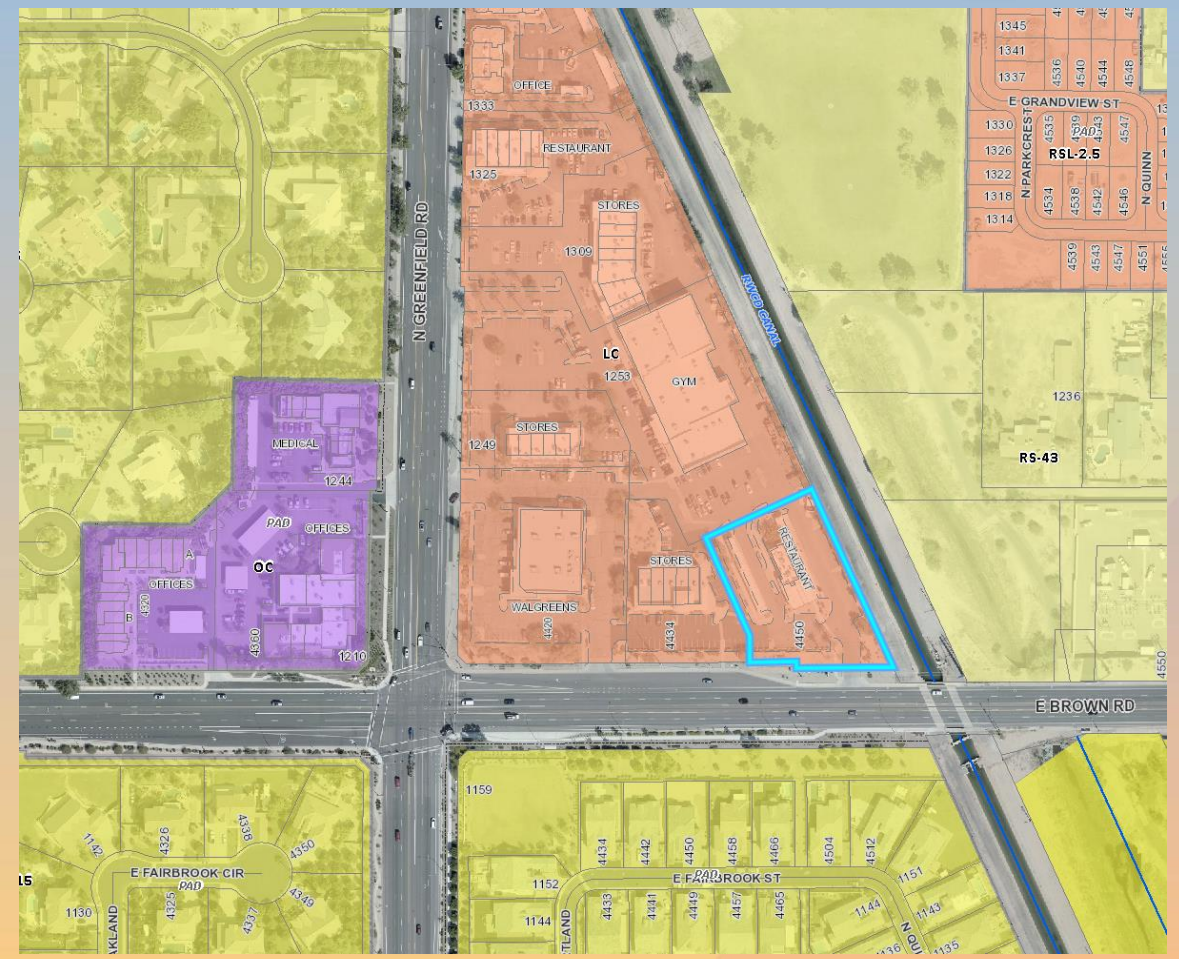






# Zoning

- Limited Commercial
- Proposed use is allowed with the approval of a Special Use Permit







# Site Photo

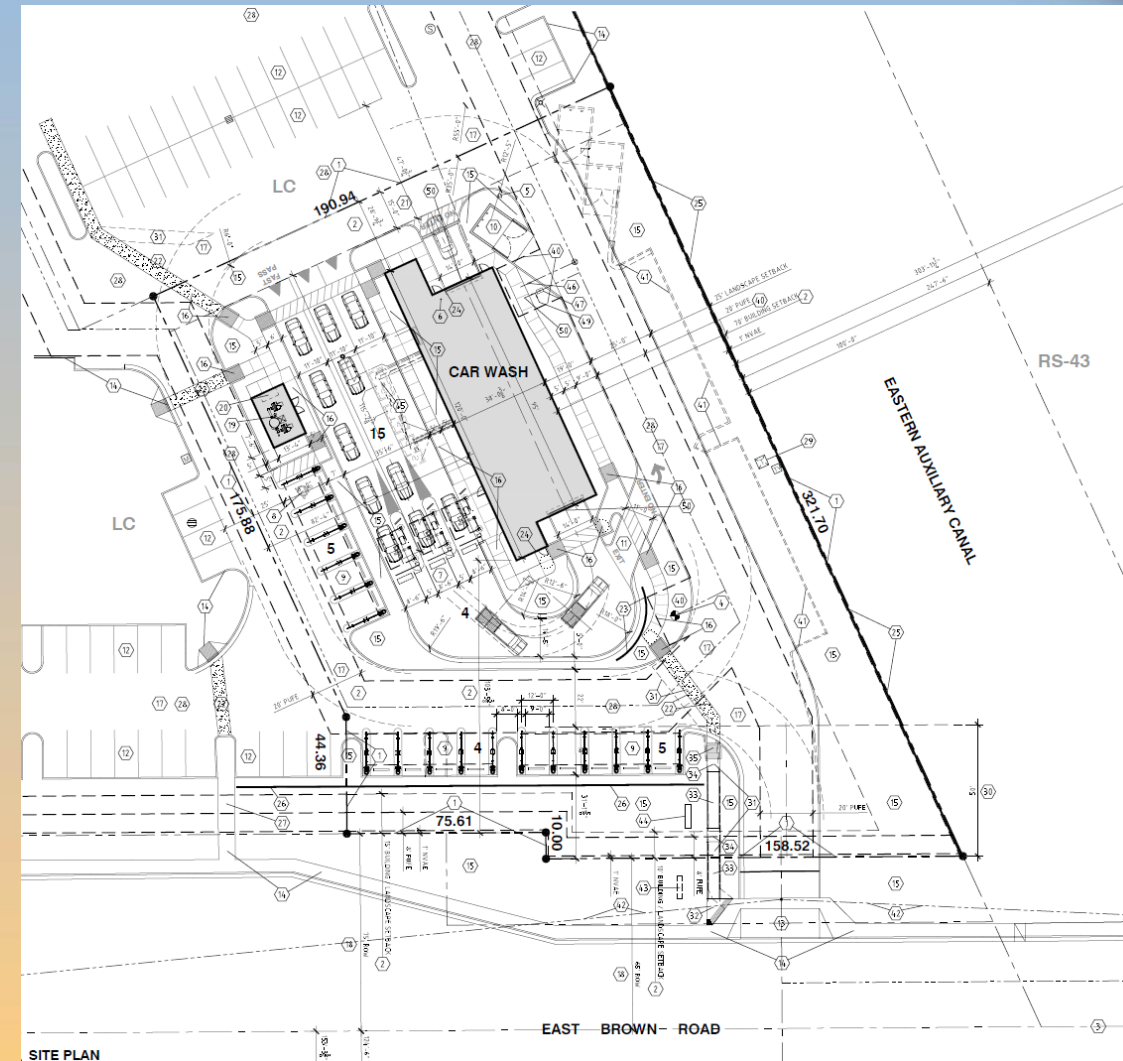


Looking north from Brown Road



# Site Plan

- Shared Access from Brown Road
- 3,937 SF building
- 14 vacuum spots proposed
- Sound attenuating wall placed on the south side of the wash to reduce noise impacts

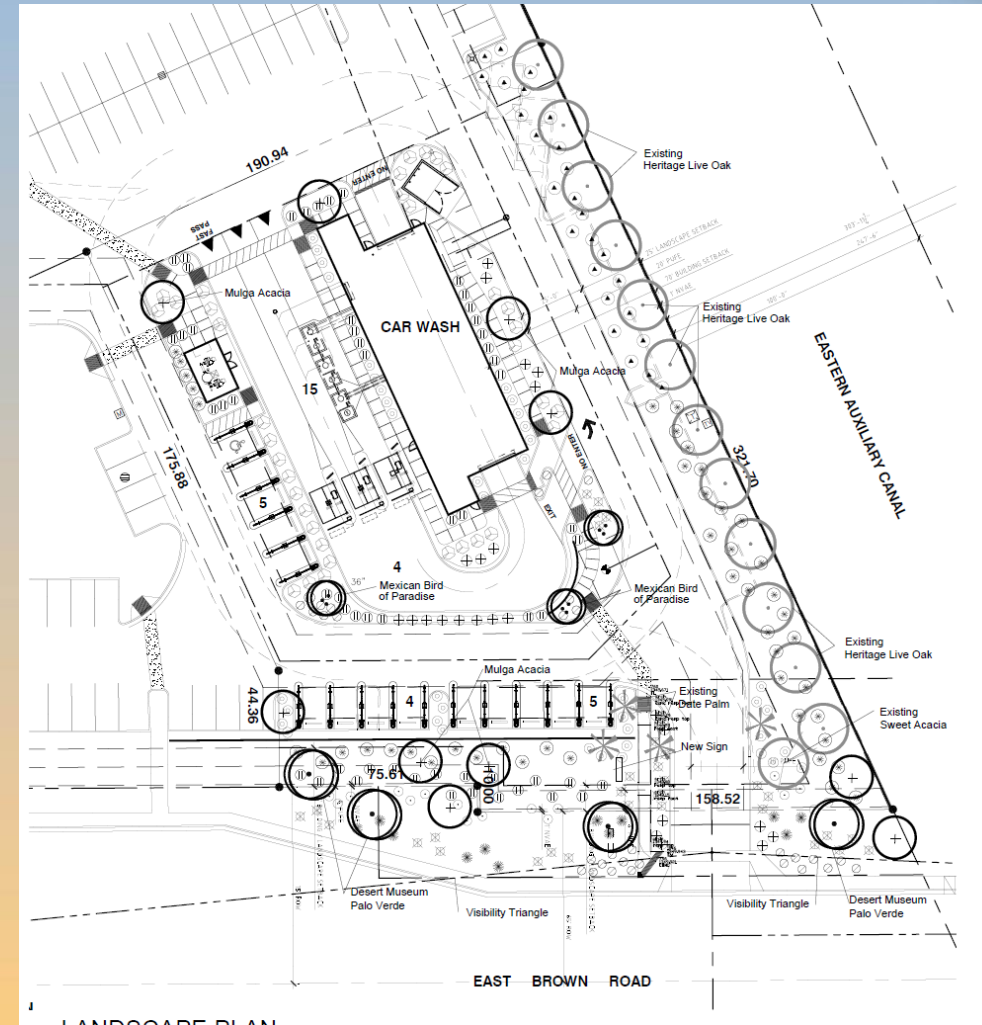






# Landscape Plan

PLANT MATERIAL LEGEND				
KEY	SYMBOL	BOTANICAL/COMMON NAME	SIZE (Height, Caliper & Spacing)	QUANT.
(A)		<i>Acacia farnesiana</i> Sweet Acacia	Existing to remain	1
(B)		<i>Phoenix dactyloides</i> Date Palm	Existing to remain	4
(C)		<i>Quercus virginiana</i> Heritage Live Oak	Existing to remain	12
<b>TREES</b>				
(1)		<i>Cassipouira mexicana</i> Mexican Bird of Paradise	36" Box 9' 5" 2.0" Double-Staked Typ.	3
(2)		<i>Acacia drepanoloba</i> Mulga	24" Box 7' 4" 1.5" Double-Staked Typ.	10
(3)		<i>Acacia farnesiana</i> Sweet Acacia	36" Box 10' 8" 2.5" Double-Staked Typ.	4
<b>LARGE SHRUBS</b>				
(4)		<i>Leucophyllum longimanis</i> Rio Bravo Texas Ranger	5 Gallon	46
(5)		<i>Nerium o.</i> 'Petite Pink' Petite Pink Cleander	5 Gallon	26
(6)		<i>Banania 'Valentine'</i> Valentine Bush	5 Gallon	35
<b>MEDIUM AND SMALL SHRUBS</b>				
(7)		<i>Jasminum californicum</i> Chaparral	5 Gallon	17
(8)		<i>Muhlenbergia capillaris</i> 'Regal Mist' Regal Mist Deer Grass	5 Gallon	31
(9)		<i>Ruellia paniculata</i> Baja Rubella	5 Gallon	41
(10)		<i>Collinsia c.</i> 'Little John' Little John Bush	5 Gallon	60
<b>GROUNDCOVERS</b>				
(11)		<i>Lantana m.</i> 'New Gold' New Gold Lantana	1 Gallon	30
(12)		<i>Rosmarinus officinalis</i> 'Prostratus' Dwarf Rosemary	5 Gallon	24
<b>ACCENTS</b>				
(13)		<i>Hesperaloe parviflora</i> Red Yucca	5 Gallon	12
<b>LANDSCAPE MATERIALS</b>				
(14)		Decomposed Granite Express Broom	3/4" screened 2" Deep	



LANDSCAPE PLAN





# Elevations



**(B) EXTERIOR ELEVATION - FRONT - SOUTHEAST**  
 3/16 = 1' - 0"

SOUTHEAST ELEVATION		
TOTAL ELEVATION AREA	1018.87	
DOORS, WINDOWS, SHADES	239.88	24%
STONE VENEER	119.89	12%
HORIZONTAL SIDING	153.01	15%
EFIS SAND TEXTURE	506.09	50%
		100%



# Elevations



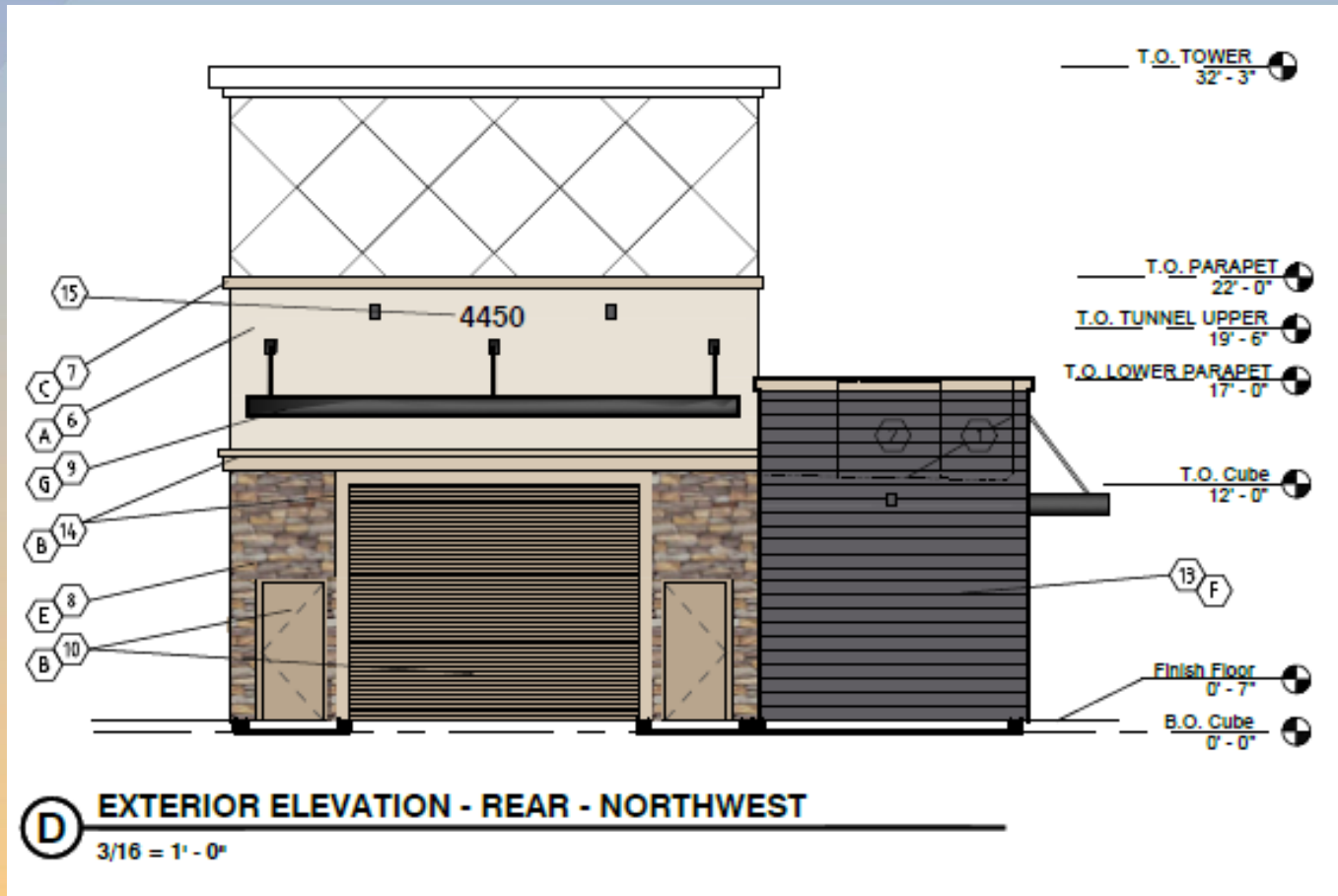
**A** EXTERIOR ELEVATION - SIDE - NORTHEAST  
3/16 = 1' - 0"

NORTHEAST ELEVATION		
TOTAL ELEVATION AREA	2757.00	
DOORS, WINDOWS, SHADES	271.54	10%
STONE VENEER	631.05	23%
HORIZONTAL SIDING	729.80	26%
EFIS SAND TEXTURE	1124.61	41%
		100%





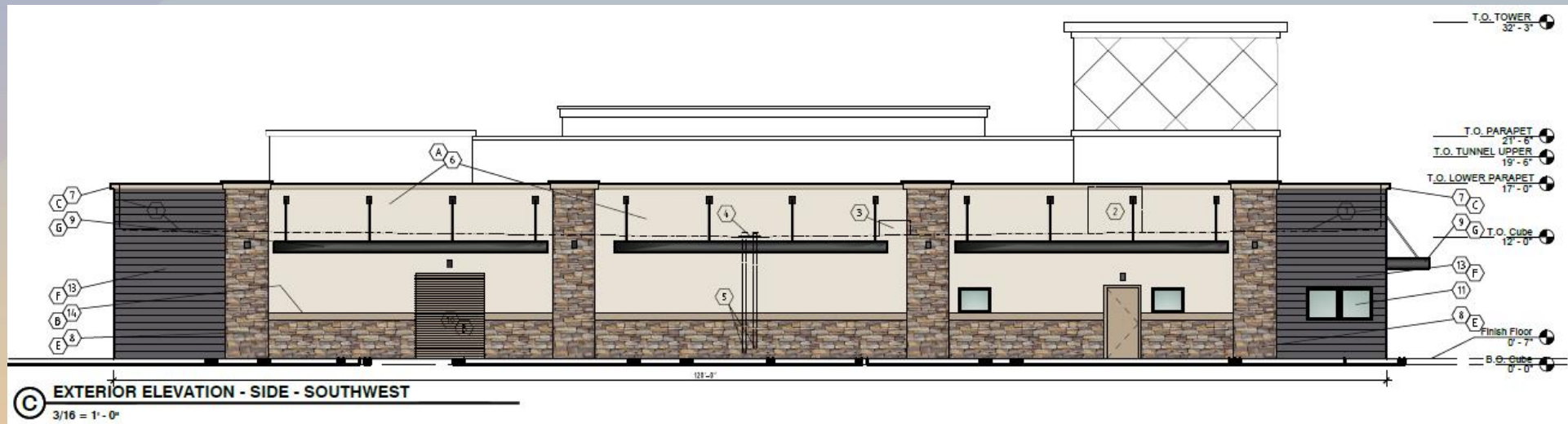
# Elevations



NORTHWEST ELEVATION		
TOTAL ELEVATION AREA	768.82	
DOORS, WINDOWS, SHADES	233.15	30%
STONE VENEER	76.82	10%
HORIZONTAL SIDING	208.02	27%
EFIS SAND TEXTURE	250.83	33%
		100%



# Elevations



SOUTHWEST ELEVATION		
TOTAL ELEVATION AREA	1986.22	
DOORS, WINDOWS, SHADES	185.24	9%
STONE VENEER	516.89	26%
HORIZONTAL SIDING	316.95	16%
EFIS SAND TEXTURE	967.14	49%
		100%





# Material Board

## MATERIAL LEGEND

		MAIN BLDG. EFIS SHERWIN-WILLIAMS: SW0053 PORCELAIN
		WAINSCOT CAP EFIS/DOORS SHERWIN-WILLIAMS: SW7534 OUTERBANKS
		TRIM/ACCENT EFIS SHERWIN-WILLIAMS: SW7529 SAND BEACH
		DIAMOND PATTERN/ACCENT SHERWIN-WILLIAMS: SW6479 DRIZZLE
		STONE ACCENT (MATCH SHOPPING CENTER) SHOWN: EL DORADO STONE RUSTIC LEDGE - CLEARWATER
		HORIZONTAL SHIPLAP SHERWIN-WILLIAMS: SW6278 CLOAK GRAY
		ALL METAL: AWNINGS, TIE BACKS, WINDOW FRAMES BLACK



# Findings

Staff is seeking your review and recommendation on the following:

- ✓ Proposed building elevations and landscape design

*Staff welcomes any feedback*





# Design Review Board