



Design Review Board



DRB24-00979

Downtown Façade

45-47 W. Main

Kellie Rorex, Senior Planner

December 10, 2024



Request

- Design Review
- Downtown façade improvement to existing storefront





Location

- South side of Main Street
- West of Center Street
- East of Country Club Drive





Site Photo

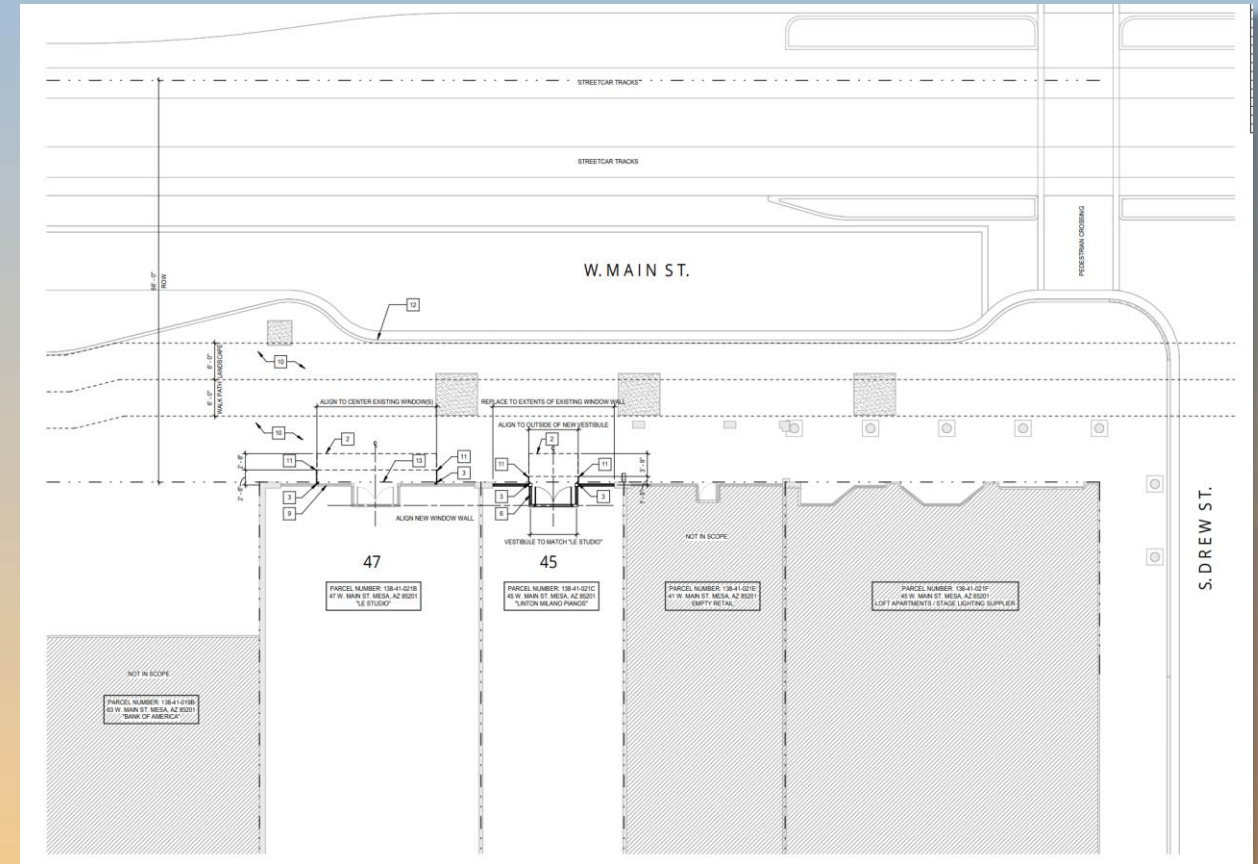


Looking south from Main Street



Site Plan

- Remove existing colonnade
- Demo existing window wall and door
- Demo pavers at entry and replace with matching hardscape
- Add new overhead canopy





Elevations





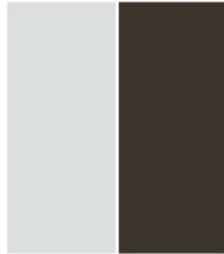
Elevations





Material Board

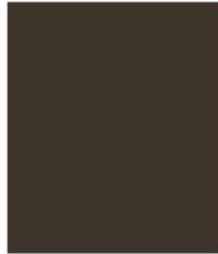
EXTERIOR MATERIALS



MT-01
DESCRIPTION: Z-GIRT (OR SIMILAR) LIGHT GAUGE LOUVERS TYP.
PRODUCT: B.O.D. PAC CLAD PERFORMANCE COATING
FINISH/ COLOR: REGAL WHITE 614973; DARK BRONZE 614354



MT-02
DESCRIPTION: APPROX 6"X6" TUBE STEEL FRAME WITH WELDED PLATE STEEL SURROUND
PRODUCT: B.O.D. PAC CLAD PERFORMANCE COATING
FINISH/ COLOR: REGAL WHITE 614973; DARK BRONZE 614354



MT-03
DESCRIPTION: SHEET METAL FLASHING, METAL ACCENTS, FENCE, GATES, PLANTERS
PRODUCT: B.O.D. PAC CLAD PERFORMANCE COATING
FINISH/ COLOR: MATCH ADJACENT OR DARK BRONZE 614354



PT-01
DESCRIPTION: PAINTED SMOOTH FINISH STUCCO
PRODUCT: B.O.D. SHERWIN WILLIAMS
FINISH/ COLOR: 6990 CAVIAR #4B4A4B



PT-02
DESCRIPTION: PAINTED SMOOTH FINISH STUCCO
PRODUCT: B.O.D. SHERWIN WILLIAMS
FINISH/ COLOR: 6002 ESSENTIAL GRAY #BB8BB9



PT-03
DESCRIPTION: PAINTED SMOOTH FINISH STUCCO
PRODUCT: B.O.D. SHERWIN WILLIAMS
FINISH/ COLOR: 7066 GRAY MATTERS #A7AAA7



PT-04
DESCRIPTION: PAINTED SMOOTH FINISH STUCCO
PRODUCT: B.O.D. SHERWIN WILLIAMS
FINISH/ COLOR: 2848 ROYCROFT PEWTER #6C7070



GL-01
DESCRIPTION: NEW STOREFRONT SYSTEM
PRODUCT: B.O.D. VIRACON VE3-2M
FINISH/ COLOR: MATCH EXISTING LE STUDIO OR TRE BELLA



AL-01
DESCRIPTION: ALUMINUM FRAMING, WINDOW WALL
PRODUCT: B.O.D. HIGH PERFORMANCE FLUOROPOLYMER FINISH
FINISH/ COLOR: MATCH EXISTING LE STUDIO OR TRE BELLA



Findings

Staff is seeking your review and recommendation on the following:

- ✓ Proposed façade improvement

Staff welcomes any feedback



Design Review Board



1. FRAME WALL INFILL WITH STUCCO FINISH
2. Z-GIRT (OR SIMILAR) LIGHT GAUGE LOUVERS TYP.
3. -6X6 TUBE STEEL FRAME WITH WELDED PLATE STEEL SURROUND
4. WALL SCONCE(S)
5. NEW STOREFRONT SYSTEM
6. STUCCO BEHIND LOUVERS
7. EXISTING BRICK TO REMAIN, RESTORATION CLEANER WITH HAND BRUSH (TYP.)
8. "ROPE LIGHT" OR SIMILAR AROUND INSIDE OF FRAME TYP.
9. METAL PANEL INSIDE FRAME
10. EXISTING CORNICE TO REMAIN
11. POTTED PLANT
12. STUCCO OVER BRICK - CONNECTION TO BE MADE WITHIN GROUT TO PRESERVE EXISTING BRICK, TYP
13. PATCH/REPAIR - EXISTING PAINT TO BE REMOVED.






Context Photo



Status

-  Future
-  Current
-  Reviewed

