



Design Review Board



DRB25-00399

Sun Devil Auto



Request

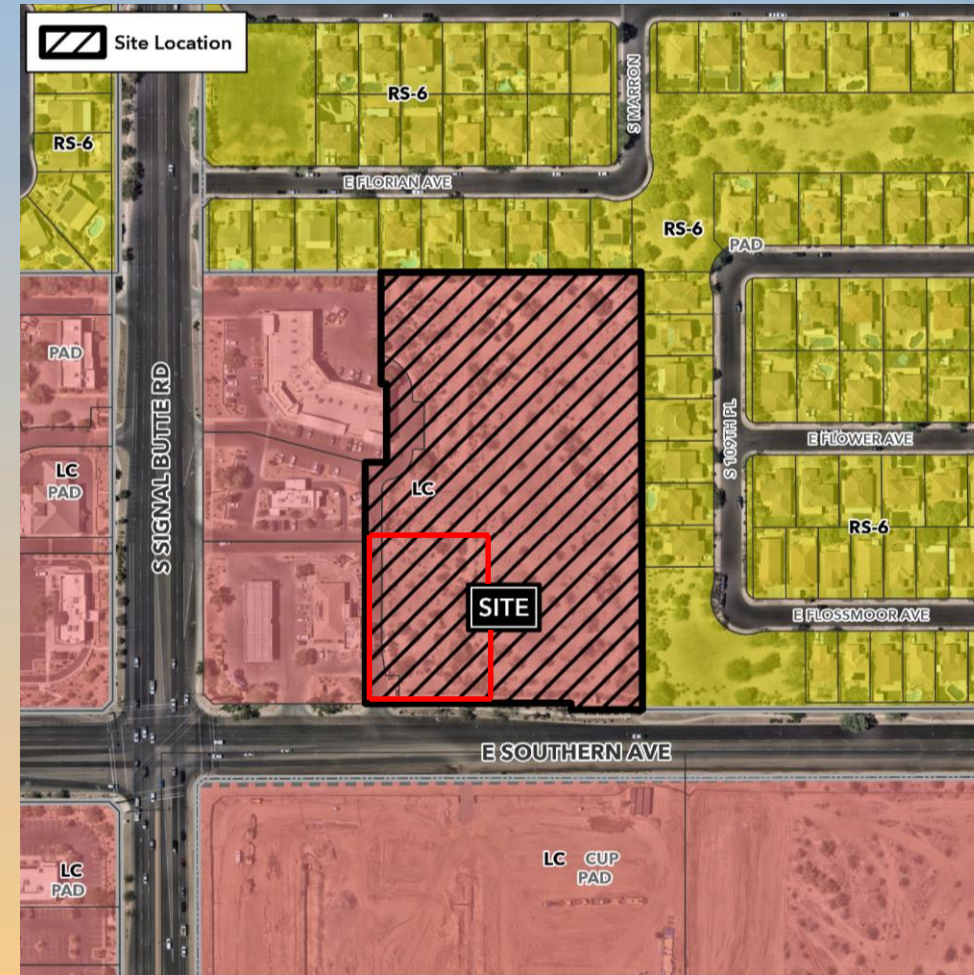
- Design Review
- To allow for a Minor Automobile/Vehicle Service and Repair facility





Location

- 280± ft east of Signal Butte Road
- North side of Southern Avenue





Site Photo

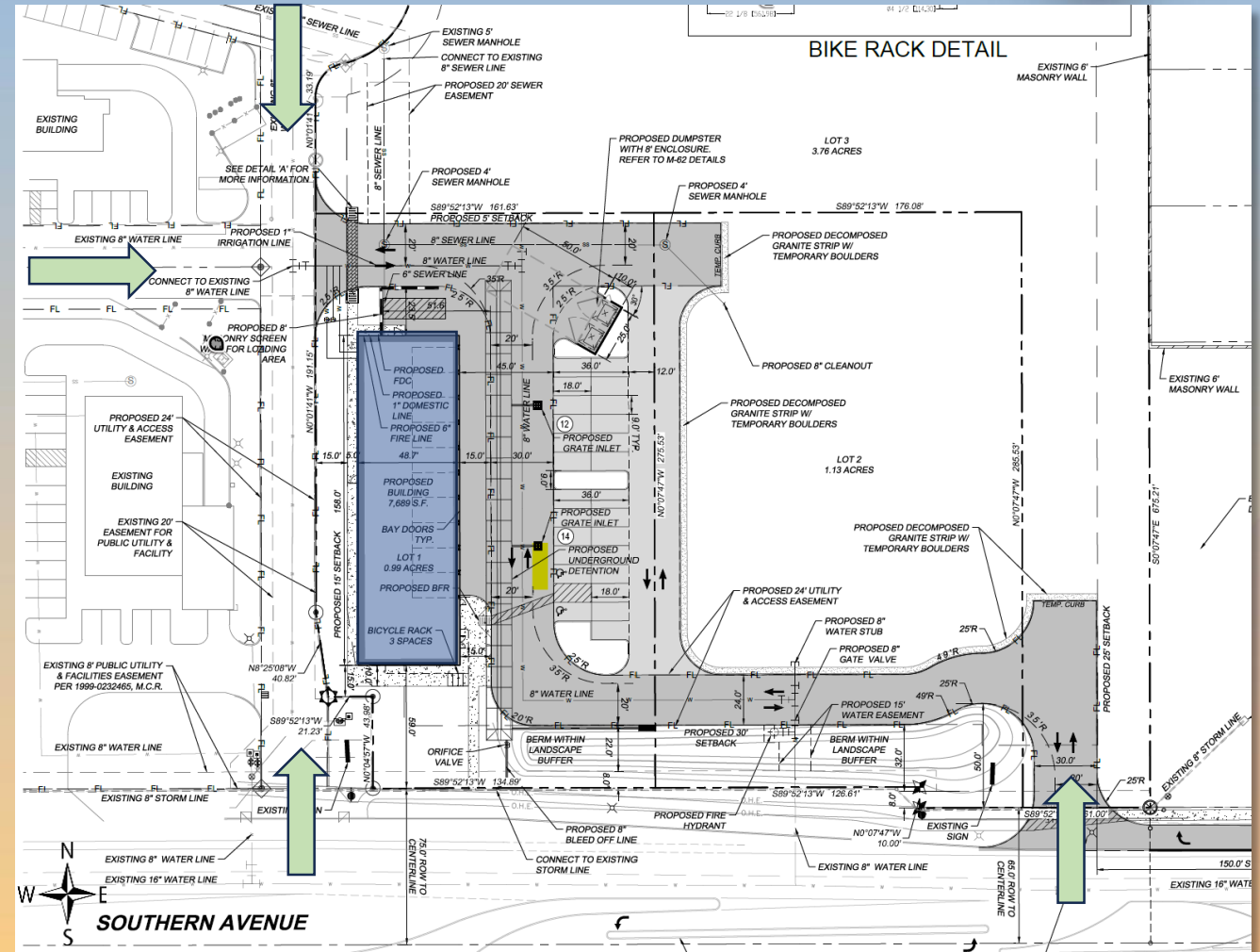


Looking north from Southern Avenue



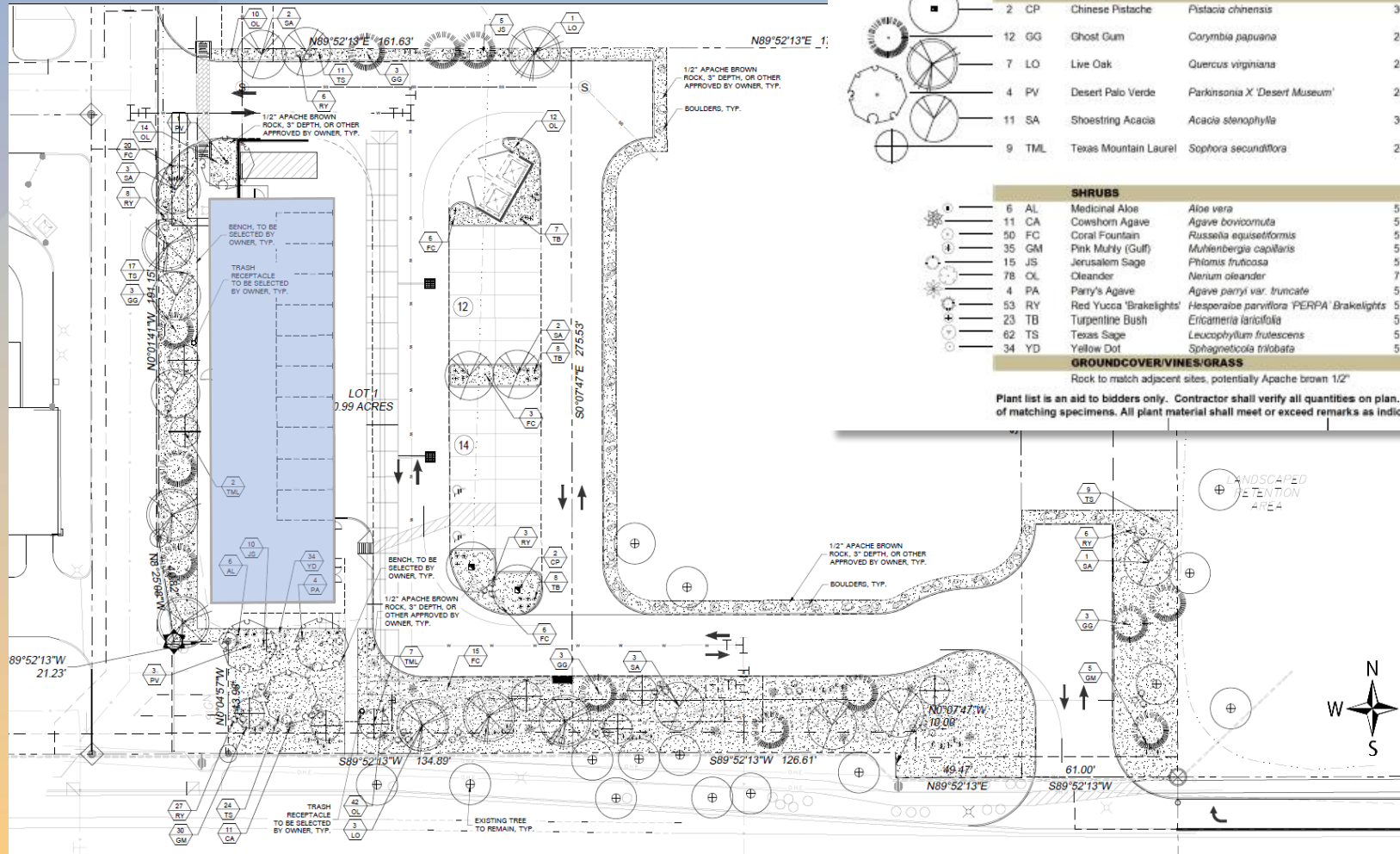
Site Plan

- Building Area: 7,689 SF
- Bay doors on the east elevation
- Shared access from Signal Butte Road and Southern Avenue
- 26 Parking Spaces





Landscape Plan



PLANT SCHEDULE

QTY	LABEL	COMMON NAME	SCIENTIFIC NAME	SIZE	NOTES	MATURE SIZE	CANOPY COVERAGE
TREES							
2	CP	Chinese Pistache	<i>Pistacia chinensis</i>	36" tree box	12' ht., 4' spread, matching	Deciduous, 40' x 35'	2800
12	GG	Ghost Gum	<i>Corymbia papuana</i>	24" tree box	12' ht., 4' spread, matching	Evergreen, 40' x 25'	12000
7	LO	Live Oak	<i>Quercus virginiana</i>	24" tree box	12' ht., 4' spread, matching	Evergreen, 40' x 50'	14000
4	PV	Desert Palo Verde	<i>Parkinsonia X 'Desert Museum'</i>	24" tree box	10' ht., 3' spread, matching	Semi-Evergreen 30' x 30'	3600
11	SA	Shoestring Acacia	<i>Acacia stenophylla</i>	36" tree box	12' ht., 4' spread, matching	Evergreen, 30' x 20'	6600
9	TML	Texas Mountain Laurel	<i>Sophora secundiflora</i>	24" tree box	8' ht., 4' spread min.	Evergreen, 10' x 8'	720
TOTAL SITE CANOPY IN S.F.							39720
SITE CANOPY PERCENTAGE							46%

SHRUBS

6	AL	Medicinal Aloe	<i>Aloe vera</i>	5 gal.	full, 24" o.c.	2' x 3'
11	CA	Cowhorn Agave	<i>Agave bovicornuta</i>	5 gal.	full, 24" spread, 48" o.c.	10' x 10'
50	FC	Coral Fountain	<i>Russelia equisetiformis</i>	5 gal.	full, 30" o.c.	3' x 5'
35	GM	Pink Muhly (Gulf)	<i>Muhlenbergia capillaris</i>	5 gal.	full, 30" o.c.	3' x 5'
15	JS	Jerusalem Sage	<i>Phlomis frutescens</i>	5 gal.	full, 24" sprd, 36" o.c.	5' x 5'
78	OL	Oleander	<i>Nerium oleander</i>	7 gal.	full, 30" sprd, 40" o.c.	10' x 10'
4	PA	Parry's Agave	<i>Agave parryi</i> var. <i>truncate</i>	5 gal.	full, 24" sprd, 36" o.c.	2' x 3'
53	RY	Red Yucca 'Brakelights'	<i>Hesperaloe parviflora</i> 'PERPA' Brakelights	5 gal.	full, 24" sprd, 30" o.c.	2' x 3'
23	TB	Turpentine Bush	<i>Ericameria laricifolia</i>	5 gal.	full, 24" o.c.	2' x 2'
62	TS	Texas Sage	<i>Leucophyllum frutescens</i>	5 gal.	full, 24" sprd, 36" o.c.	4' x 5'
34	YD	Yellow Dot	<i>Sphagneticola trilobata</i>	5 gal.	full, 24" o.c.	3' x 3'

GROUND COVER/VINES/GRASS

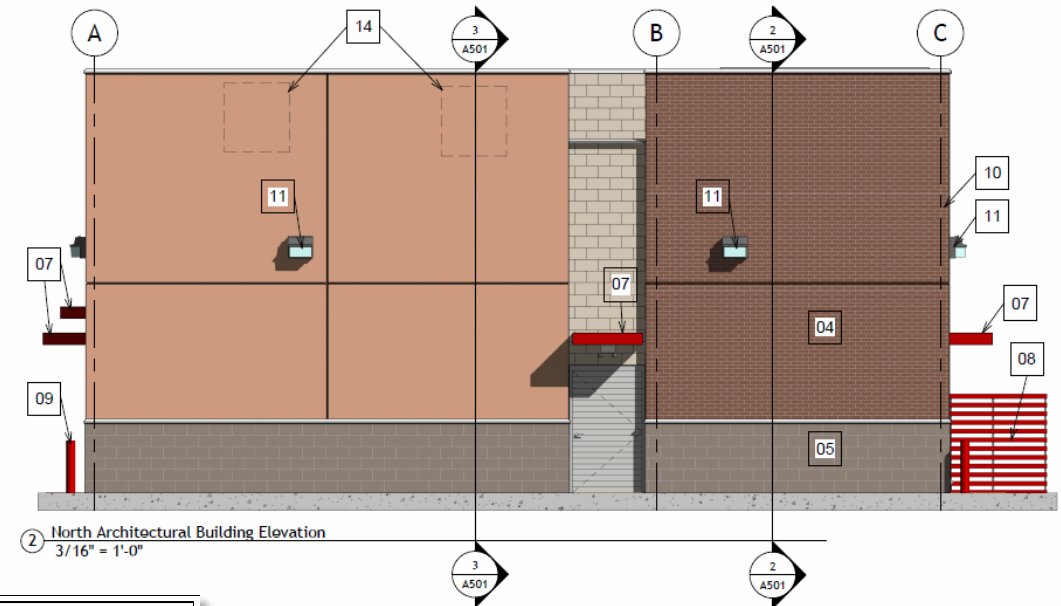
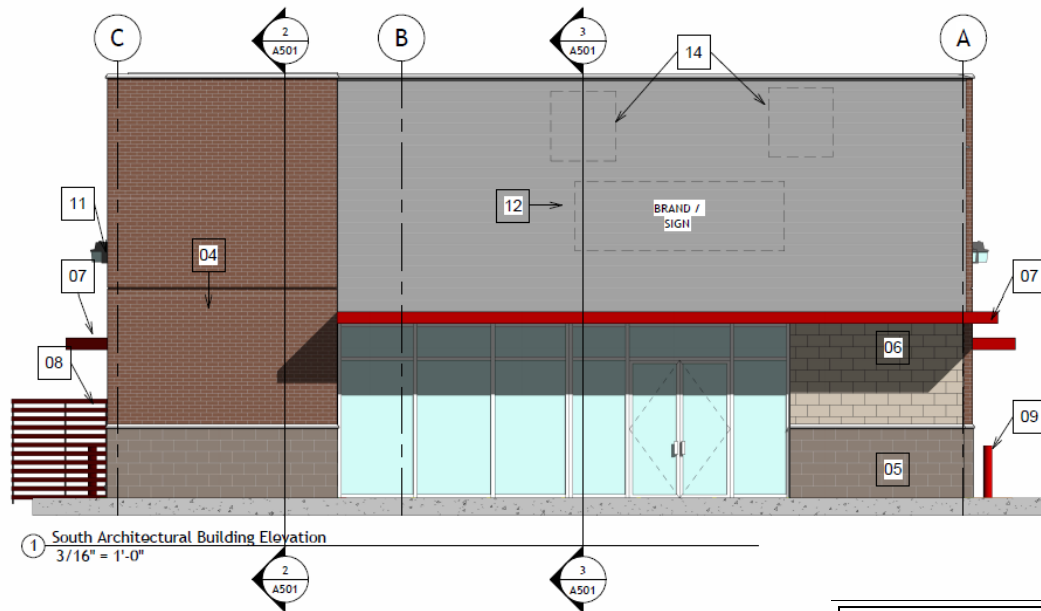
Rock to match adjacent sites, potentially Apache brown 1/2"

match neighbor

Plant list is an aid to bidders only. Contractor shall verify all quantities on plan. All heights and spreads are minimums. Trees shall have a strong central leader and be of matching specimens. All plant material shall meet or exceed remarks as indicated.



Building Elevations



LEGEND - FINISHES / SURFACES					
LEGEND	DESCRIPTION	N	S	E	W
		1,176.5 s.f.	1,163.4 s.f.	3,514.6 s.f.	3,525.5 s.f.
	METAL (SIGN)	0 SF 0%	482.2 SF 40.7%	233.3 SF 6.6%	0 SF 0%
	BRICK - VENEER	345.8 SF 29.3%	260.9 SF 22.0%	209.2 SF 5.9%	909.8 SF 25.8%
	CMU, SPLITFACE, SW-9173	55.9 SF 4.7%	57.6 SF 4.8%	716.8 SF 20.3%	1,140.4 SF 32.3%
	CMU, SPLITFACE, SW-7025	182.0 SF 15.4%	93.0 SF 7.8%	177.1 SF 5.0%	424.4 SF 12.0%
	PAINTED STUCCO	550.3 SF 46.7%	0 SF 0%	228.6 SF 6.5%	996.5 SF 28.2%



Building Elevations



LEGEND - FINISHES / SURFACES					
LEGEND	DESCRIPTION	N 1,176.5 s.f.	S 1,183.4 s.f.	E 3,514.6 s.f.	W 3,525.5 s.f.
	METAL (SIGN)	0 SF 0%	482.2 SF 40.7%	233.3 SF 6.6%	0 SF 0%
	BRICK - VENEER	345.8 SF 29.3%	260.9 SF 22.0%	209.2 SF 5.9%	909.8 SF 25.8%
	CMU, SPLITFACE, SW-9173	55.9 SF 4.7%	57.6 SF 4.8%	716.8 SF 20.3%	1,140.4 SF 32.3%
	CMU, SPLITFACE, SW-7025	182.0 SF 15.4%	93.0 SF 7.8%	177.1 SF 5.0%	424.4 SF 12.0%
	PAINTED STUCCO	550.3 SF 46.7%	0 SF 0%	228.6 SF 6.5%	996.5 SF 28.2%



Building Elevations



LEGEND - FINISHES / SURFACES					
LEGEND	DESCRIPTION	N	S	E	W
		1,176.5 s.f.	1,183.4 s.f.	3,514.6 s.f.	3,525.5 s.f.
	METAL (SIGN)	0 SF 0%	482.2 SF 40.7%	233.3 SF 6.6%	0 SF 0%
	BRICK - VENEER	345.8 SF 29.3%	260.9 SF 22.0%	209.2 SF 5.9%	909.8 SF 25.8%
	CMU, SPLITFACE, SW-9173	55.9 SF 4.7%	57.6 SF 4.8%	716.8 SF 20.3%	1,140.4 SF 32.3%
	CMU, SPLITFACE, SW-7025	182.0 SF 15.4%	93.0 SF 7.8%	177.1 SF 5.0%	424.4 SF 12.0%
	PAINTED STUCCO	550.3 SF 46.7%	0 SF 0%	228.6 SF 6.5%	996.5 SF 28.2%



Rendering



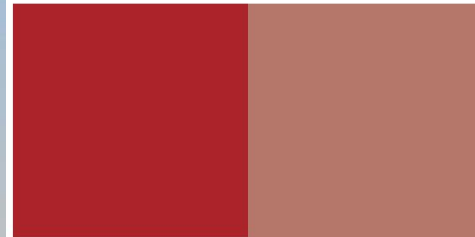


Rendering





Colors and Materials



PANTONE®
7621 C

SW 9006

Rojo Dust

CUSTOM BRAND COLOR - PER OWNER

GENERAL NOTES - ELEVATIONS

- A. EXTERIOR SEALANT SHALL MATCH COLOR OF CMU.
- B. INSTALL CONTROL JOINTS PER MFR RECOMMENDATIONS.
- C. ALL SIGNAGE WILL BE PERMITTED SEPARATELY.
- D. COORDINATE ANY REQUIRED KNOX BOXES WITH SHUPRE MARSHALL FOR TYPE AND LOCATION.
- E. PRIME ALL CMU BEFORE PAINTING OR INSULATION OF OTHER FINISHES WITH LONON BLOCK SURFACE LUXI SERIES (30-100 SQ FT/GAL).
- 1ST COAT: SW LONON SELF-CLEANING ACRYLIC COATING-SATIN, LX14-50 SERIES.
- 2ND COAT: SW LONON SELF-CLEANING ACRYLIC COATING-SATIN, LX14-50 SERIES (\$30-7.0 GALS WET, 2.0-2.5 DRY PER COAT).
- F. ALL EXTERIOR METALWORK, NOT GALVANIZED, SHALL BE PRIMED AND PAINTED WITH 2 COATS OF EXTERIOR ENAMEL PAINT (LUNTELS, BOLLARDS, ETC.).
- G. GC SHALL VERIFY LOCAL JURISDICTION AND WIND SPEED REQUIREMENTS TO DETERMINE IF HURRICANE RATED HIGH IMPACT STONEFRONT OR SIGNAGE IS REQUIRED. FURNISH AS REQUIRED.



METAL -
WALL PANEL



SW 7025

Backdrop

SW 9173

Shiitake

SW 0039

Mellow Mauve

CMU -
SPLIT FACE

CMU -
SMOOTH

BRICK -
NATURAL



Findings

Staff is seeking your review and recommendation on the following:

- ✓ Proposed building elevations and landscape design

Staff welcomes any feedback



Design Review Board