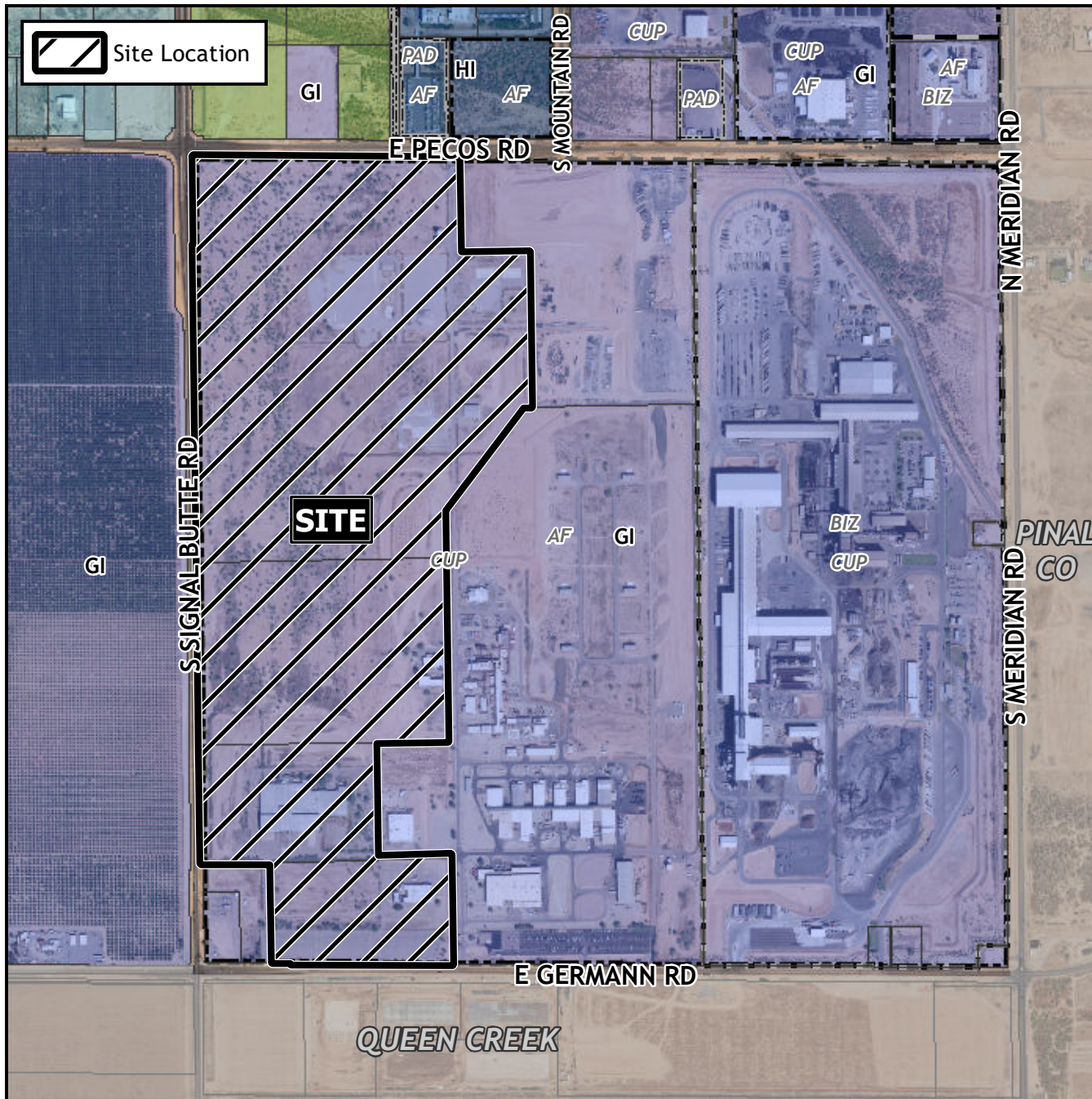


Final Plat Vicinity Map



Case Details

Project:

Signal Butte Crossings
SUB24-00404

Site/Address:

District 6. Within the 10800 to 11100 blocks of East Pecos Road (south side), within the 6800 to 7600 blocks of South Signal Butte Road (east side), and within the 10800 To 11100 blocks of East Germann Road (north side). Located south of Pecos Road and east of Signal Butte Road (192 ± acres).

Description:

Signal Butte Land, LLC, and Gerald Purcell, Developers
Superior Surveying Services Inc., Surveyor

