



These drawings are instruments of service and are the property of Howard Perlman, AIA. Howard Perlman expressly reserves its common law copyright and other property rights to these plans. These plans are not to be reproduced, changed or copied in any form or manner whatsoever, nor are they to be assigned to any third party, without first obtaining the expressed written permission and consent of Howard Perlman, AIA. Written dimensions on these drawings shall have precedence over scaled dimensions.
© COPYRIGHT 2024, HOWARD PERLMAN, A.I.A.

Rev.	Date	By	Description

GENERAL NOTES

1. INFORM THE ARCHITECT OF ANY DISCREPANCIES BEFORE BEGINNING WORK.
2. ALL SIGNAGE UNDER SEPARATE SUBMITTAL AND PERMIT
3. PROVIDE CONTINUOUS COLOR-MATCHED CAULK AT TRANSITION OF ALL DISSIMILAR MATERIALS.

MATERIAL LEGEND

- A PRIMARY PAINT COLOR
MANUF: DUNN EDWARDS
COLOR: DE6219 CRYSTAL HAZE
- B ACCENT PAINT COLOR
MANUF: DUNN EDWARDS
COLOR: DE6364 CAVERNOUS
- C BRICK VENEER
MANUF: INTERSTATE BRICK
STYLE: MATTE, 2 1/4" NORMAN
COLOR: COPPERSTONE
- D BRICK VENEER
MANUF: INTERSTATE BRICK
STYLE: MATTE, 2 1/4" NORMAN
COLOR: DESERT SAND
- E PAINT COLOR
MANUF: DUNN EDWARDS
COLOR: DE6235 NORTHGATE GREEN
- F 8" X 4" X 16" CMU, STACKED BOND
MANUF: ECHELON MASONRY
STYLE: MESASTONE
COLOR: MALIBU SAND
- G 8" X 4" X 16" CMU, RUNNING BOND
MANUF: ECHELON MASONRY
STYLE: MESASTONE
COLOR: MALIBU SAND
- H PAINTED PERF METAL SCREEN
MANUF: MONICHOOLS
COLOR: DE6364 CAVERNOUS
- J VINYL WINDOW UNIT
MANUF: AVANTI INDUSTRIES, LLC
COLOR: BLACK
- K ALUMINUM STOREFRONT
COLOR: ANODIZED BLACK

KEYNOTES

- 04 03 ADHERED CONCRETE MASONRY BRICK VENEER FINISH.
- 05 32 STEEL PICKET GUARDRAIL AT 42" A.F.F. - PAINTED DUNN EDWARDS CAVERNOUS DE6364.
- 08 05 DOOR & FRAME AS SCHEDULED.
- 08 06 ALUMINUM SYSTEM: FRAME COLOR: BRONZE ANODIZED. EXTERIOR GLAZING: 1" INSULATED SYSTEM - SOLARBAN 60 WITH SOLEXIA; INTERIOR GLAZING: 1/4" SINGLE PANE, UNINSULATED.
- 08 09 VINYL WINDOW UNIT. FRAME COLOR: BLACK. GLAZING: DUAL PANE, LOW-E. RECESSED 2" WITH MASONRY VENEER SILL.
- 09 03 WESTERN CO. 1-KOTE STUCCO SYSTEM OR APPROVED EQUAL - INSTALL PER MANUFACTURER SPECS. ICC-ES# ESR-1607.

- T.O. PARAPET 37'-4"
- T.O.P. 3RD LEVEL 30'-8 7/8"
- T.O.D. 3RD LEVEL 21'-7 3/4"
- T.O.P. 2ND LEVEL 19'-11"
- T.O.D. 2ND LEVEL 10'-9 7/8"
- T.O.P. 1ST LEVEL 9'-1 1/8"
- FINISH FLOOR 0'-0"



1 SOUTH COLORED ELEVATION - BLDG 1 AREA 1B
1/8" = 1'-0"



2 SOUTH COLORED ELEVATION - BLDG 1 AREA 1A
1/8" = 1'-0"



3 WEST COLORED ELEVATION - BLDG 1 & 2
1/8" = 1'-0"

CITY APPROVALS

KIVA # 20-883	PAPP # 2009168
SDEV # 2007633	PRLM: 2010933
CITY QUARTER SECTION: Q5-29	SCMJ # 2014900



MESA ROYALE PH4
644 W. Main St.
Mesa, AZ 85201

CHICANOS POR LA CAUSA
1008 EAST BUCKEYE ROAD,
STE 115 Phoenix, AZ 85034

Project
Owner

Drawn/Checked
TK / NM

Date
09/26/24

Project Number
321028

Sheet Number
COLORED ELEVATIONS - BLDG 1
A09.2.1

9/26/2024 6:15:53 PM



These drawings are instruments of service and are the property of Howard Perlman, AIA. Howard Perlman expressly reserves its common law copyright and other property rights to these plans. These plans are not to be reproduced, changed or copied in any form or manner whatsoever, nor are they to be assigned to any third party, without first obtaining the expressed written permission and consent of Howard Perlman, AIA. Written dimensions on these drawings shall have precedence over scaled dimensions.
© COPYRIGHT 2024, HOWARD PERLMAN, A.I.A.

Rev.	Date	By	Description

GENERAL NOTES

- INFORM THE ARCHITECT OF ANY DISCREPANCIES BEFORE BEGINNING WORK.
- ALL SIGNAGE UNDER SEPARATE SUBMITTAL AND PERMIT
- PROVIDE CONTINUOUS COLOR-MATCHED CAULK AT TRANSITION OF ALL DISSIMILAR MATERIALS.

MATERIAL LEGEND

- A** PRIMARY PAINT COLOR
MANUF: DUNN EDWARDS
COLOR: DE6219 CRYSTAL HAZE
- B** ACCENT PAINT COLOR
MANUF: DUNN EDWARDS
COLOR: DE6364 CAVERNOUS
- C** BRICK VENEER
MANUF: INTERSTATE BRICK
STYLE: MATTE, 2 1/4" NORMAN
COLOR: COPPERSTONE
- D** BRICK VENEER
MANUF: INTERSTATE BRICK
STYLE: MATTE, 2 1/4" NORMAN
COLOR: DESERT SAND
- E** PAINT COLOR
MANUF: DUNN EDWARDS
COLOR: DE6235 NORTHGATE GREEN
- F** 8" X 4" X 16" CMU, STACKED BOND
MANUF: ECHOLON MASONRY
STYLE: MESASTONE
COLOR: MALIBU SAND
- G** 8" X 4" X 16" CMU, RUNNING BOND
MANUF: ECHOLON MASONRY
STYLE: MESASTONE
COLOR: MALIBU SAND
- H** PAINTED PERF METAL SCREEN
MANUF: MONICHOOLS
COLOR: DE6364 CAVERNOUS
- J** VINYL WINDOW UNIT
MANUF: AVANTI INDUSTRIES, LLC
COLOR: BLACK
- K** ALUMINUM STOREFRONT
COLOR: ANODIZED BLACK

KEYNOTES

- 04 03 ADHERED CONCRETE MASONRY BRICK VENEER FINISH.
- 05 03 STEEL FRAMED STAIR, PAINTED.
- 05 32 STEEL PICKET GUARDRAIL AT 42" A.F.F. - PAINTED DUNN EDWARDS CAVERNOUS DE6364.
- 08 05 DOOR & FRAME AS SCHEDULED.
- 08 06 ALUMINUM SYSTEM: FRAME COLOR: BRONZE ANODIZED. EXTERIOR GLAZING: 1" INSULATED SYSTEM - SOLARBAN 60 WITH SOLEXIA. INTERIOR GLAZING: 1/4" SINGLE PANE, UNINSULATED.
- 08 09 VINYL WINDOW UNIT, FRAME COLOR: BLACK. GLAZING: DUAL PANE, LOW-E, RECESSED 2" WITH MASONRY VENEER SILL.
- 09 03 WESTERN CO. 1-KOTE STUCCO SYSTEM OR APPROVED EQUAL - INSTALL PER MANUFACTURER SPECS. ICC-ES# ESR-1607.



2 NORTH COLORED ELEVATION - BLDG 1 AREA 1A
1/8" = 1'-0"



3 NORTH COLORED ELEVATION - BLDG 1 AREA 1B
1/8" = 1'-0"

Building 1 - South Elevation		
Material	Square Footage	Percentage
Stucco	5,910	42%
Brick Veneer	2,268	16%
Block Veneer	1,670	12%
Metal Railings/Screen	1,276	9%
Windows / Doors	2,828	20%
Total	13,952	100%

Building 1 - East Elevation		
Material	Square Footage	Percentage
Stucco	1,494	60%
Brick Veneer	565	23%
Block Veneer	66	3%
Metal Railings/Screen	351	14%
Windows / Doors	29	1%
Total	2,505	100%

Building 1 - North Elevation		
Material	Square Footage	Percentage
Stucco	6,516	47%
Brick Veneer	1,615	12%
Block Veneer	1,236	9%
Metal Railings/Screen	2,776	20%
Windows / Doors	1,867	13%
Total	14,010	100%

Building 1 - West Elevation		
Material	Square Footage	Percentage
Stucco	1,585	67%
Brick Veneer	381	16%
Block Veneer	99	4%
Metal Railings/Screen	89	4%
Windows / Doors	210	9%
Total	2,364	100%

CITY APPROVALS

KIVA # 20-883	PAPP # 2009168
SDEV # 2007633	PRLM: 2010933
CITY QUARTER SECTION: Q5-29	SCMJ # 2014900

Project: **MESA ROYALE PH4**
644 W. Main St.
Mesa, AZ 85201

Owner: **CHICANOS POR LA CAUSA**
1008 EAST BUCKEYE ROAD,
STE 115 Phoenix, AZ 85034

Drawn/Checked: **TK / NM**

Date: **09/26/24**

Project Number: **321028**

Sheet Number: **COLORED ELEVATIONS - BLDG 1**

A09.2.2



These drawings are instruments of service and are the property of Howard Perlman, AIA. Howard Perlman expressly reserves its common law copyright and other property rights to these plans. These plans are not to be reproduced, changed or copied in any form or manner whatsoever, nor are they to be assigned to any third party, without first obtaining the expressed written permission and consent of Howard Perlman, AIA. Written dimensions on these drawings shall have precedence over scaled dimensions.
© COPYRIGHT 2024, HOWARD PERLMAN, A.I.A.

Rev.	Date	By	Description

GENERAL NOTES

1. INFORM THE ARCHITECT OF ANY DISCREPANCIES BEFORE BEGINNING WORK.
2. ALL SIGNAGE UNDER SEPARATE SUBMITTAL AND PERMIT
3. PROVIDE CONTINUOUS COLOR-MATCHED CAULK AT TRANSITION OF ALL DISSIMILAR MATERIALS.

MATERIAL LEGEND

- A PRIMARY PAINT COLOR
MANUF: DUNN EDWARDS
COLOR: DE6219 CRYSTAL HAZE
- B ACCENT PAINT COLOR
MANUF: DUNN EDWARDS
COLOR: DE6364 CAVERNOUS
- C BRICK VENEER
MANUF: INTERSTATE BRICK
STYLE: MATTE, 2 1/4" NORMAN
COLOR: COPPERSTONE
- D BRICK VENEER
MANUF: INTERSTATE BRICK
STYLE: MATTE, 2 1/4" NORMAN
COLOR: DESERT SAND
- E PAINT COLOR
MANUF: DUNN EDWARDS
COLOR: DE6235 NORTHGATE GREEN
- F 8" X 4" X 16" CMU, STACKED BOND
MANUF: ECHELON MASONRY
STYLE: MESASTONE
COLOR: MALIBU SAND
- G 8" X 4" X 16" CMU, RUNNING BOND
MANUF: ECHELON MASONRY
STYLE: MESASTONE
COLOR: MALIBU SAND
- H PAINTED PERF METAL SCREEN
MANUF: MCNICHOLS
COLOR: DE6364 CAVERNOUS
- J VINYL WINDOW UNIT
MANUF: AVANTI INDUSTRIES, LLC
COLOR: BLACK
- K ALUMINUM STOREFRONT
COLOR: ANODIZED BLACK

KEYNOTES

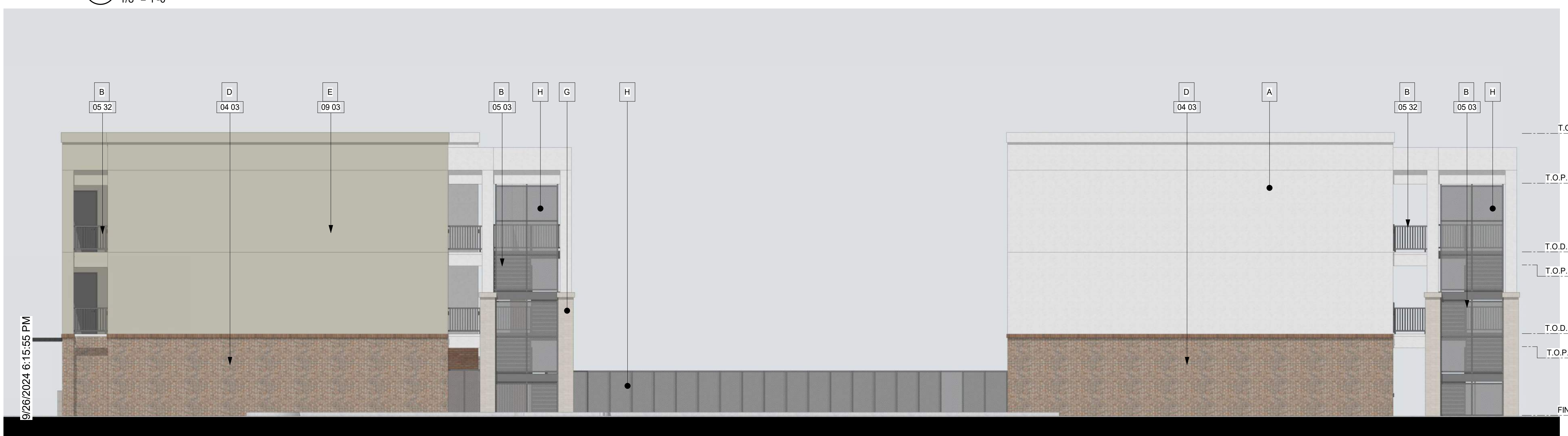
- 04 03 ADHERED CONCRETE MASONRY BRICK VENEER FINISH.
- 05 03 STEEL FRAMED STAIR, PAINTED.
- 05 32 STEEL PICKET GUARDRAIL AT 42" A.F.F. - PAINTED DUNN EDWARDS CAVERNOUS DE6364.
- 08 05 DOOR & FRAME AS SCHEDULED.
- 08 09 VINYL WINDOW UNIT, FRAME COLOR: BLACK; GLAZING: DUAL PANE, LOW-E, RECESSED 2" WITH MASONRY VENEER SILL.
- 09 03 WESTERN CO. 1-KOTE STUCCO SYSTEM OR APPROVED EQUAL - INSTALL PER MANUFACTURER SPECS. ICC-ES# ESR-1607.



1 SOUTH COLORED ELEVATION - BLDG 2 AREA 2A
1/8" = 1'-0"



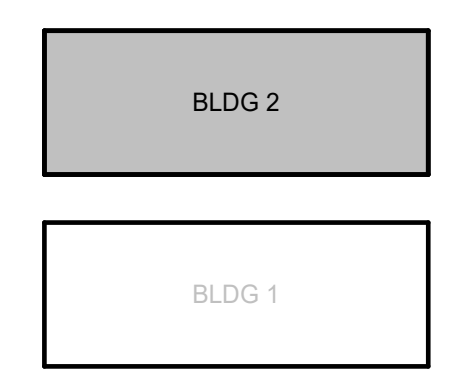
2 SOUTH COLORED ELEVATION - BLDG 2 AREA 2B
1/8" = 1'-0"



3 EAST COLORED ELEVATION - BLDG 1 & 2
1/8" = 1'-0"

CITY APPROVALS

KIVA #: 20-883	PAPP #: 2009168
SDEV #: 2007633	PRLM: 2010933
CITY QUARTER SECTION: Q5-29	SCMJ # 2014900



MESA ROYALE PH4
644 W. Main St.
Mesa, AZ 85201

CHICANOS POR LA CAUSA
1008 EAST BUCKEYE ROAD,
STE 115 Phoenix, AZ 85034

Project
Owner

Drawn/Checked
TK / NM

Date
09/26/24

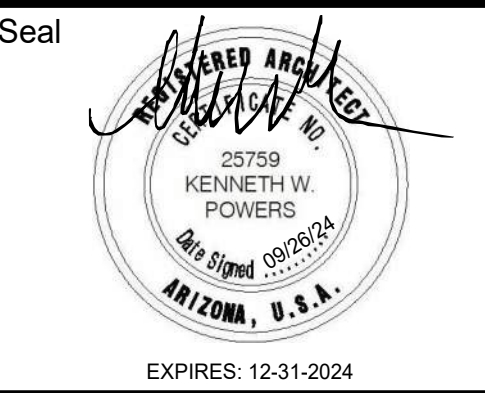
Project Number
321028

Sheet Number
COLORED ELEVATIONS - BLDG 2
A09.2.3

9/26/2024 6:15:55 PM

GENERAL NOTES

1. INFORM THE ARCHITECT OF ANY DISCREPANCIES BEFORE BEGINNING WORK.
2. ALL SIGNAGE UNDER SEPARATE SUBMITTAL AND PERMIT.
3. PROVIDE CONTINUOUS COLOR-MATCHED CAULK AT TRANSITION OF ALL DISSIMILAR MATERIALS.



These drawings are instruments of service and are the property of Howard Perlman, AIA. Howard Perlman expressly reserves its common law copyright and other property rights to these plans. These plans are not to be reproduced, changed or copied in any form or manner whatsoever, nor are they to be assigned to any third party, without first obtaining the expressed written permission and consent of Howard Perlman, AIA. Written dimensions on these drawings shall have precedence over scaled dimensions.
© COPYRIGHT 2024, HOWARD PERLMAN, A.I.A.

MATERIAL LEGEND

- A PRIMARY PAINT COLOR
MANUF: DUNN EDWARDS
COLOR: DE6219 CRYSTAL HAZE
- B ACCENT PAINT COLOR
MANUF: DUNN EDWARDS
COLOR: DE6364 CAVERNOUS
- C BRICK VENEER
MANUF: INTERSTATE BRICK
STYLE: MATTE, 2 1/4" NORMAN
COLOR: COPPERSTONE
- D BRICK VENEER
MANUF: INTERSTATE BRICK
STYLE: MATTE, 2 1/4" NORMAN
COLOR: DESERT SAND
- E PAINT COLOR
MANUF: DUNN EDWARDS
COLOR: DE6235 NORTHGATE GREEN
- F 8" X 4" X 16" CMU, STACKED BOND
MANUF: ECHELON MASONRY
STYLE: MESASTONE
COLOR: MALIBU SAND
- G 8" X 4" X 16" CMU, RUNNING BOND
MANUF: ECHELON MASONRY
STYLE: MESASTONE
COLOR: MALIBU SAND
- H PAINTED PERF METAL SCREEN
MANUF: MCNICHOLES
COLOR: DE6364 CAVERNOUS
- J VINYL WINDOW UNIT
MANUF: AVANTI INDUSTRIES, LLC
COLOR: BLACK
- K ALUMINUM STOREFRONT
COLOR: ANODIZED BLACK

KEYNOTES

- 04 03 ADHERED CONCRETE MASONRY BRICK VENEER FINISH.
- 05 03 STEEL FRAMED STAIR, PAINTED.
- 05 32 STEEL PICKET GUARDRAIL AT 42" A.F.F. - PAINTED DUNN EDWARDS CAVERNOUS DE6364.
- 08 05 DOOR & FRAME AS SCHEDULED.
- 08 09 VINYL WINDOW UNIT, FRAME COLOR: BLACK; GLAZING: DUAL PANE, LOW-E, RECESSED 2" WITH MASONRY VENEER SILL.
- 09 03 WESTERN CO. 1-KOTE STUCCO SYSTEM OR APPROVED EQUAL - INSTALL PER MANUFACTURER SPECS. ICC-ES# ESR-1607.

Rev.	Date	By	Description



1 NORTH COLORED ELEVATION - BLDG 2 AREA 2A
1/8" = 1'-0"



2 NORTH COLORED ELEVATION - BLDG 2 AREA 2B
1/8" = 1'-0"

Material	Square Footage	Percentage
Stucco	6,389	46%
Brick Veneer	2,348	17%
Block Veneer	660	5%
Metal Railings/Screen	2,205	16%
Windows / Doors	2,161	16%
Total	13,763	100%

Material	Square Footage	Percentage
Stucco	1,498	62%
Brick Veneer	553	23%
Block Veneer	66	3%
Metal Railings/Screen	293	12%
Windows / Doors	0	0%
Total	2,410	100%

Material	Square Footage	Percentage
Stucco	6,309	46%
Brick Veneer	1,798	13%
Block Veneer	1,068	8%
Metal Railings/Screen	2,756	20%
Windows / Doors	1,782	13%
Total	13,713	100%

Material	Square Footage	Percentage
Stucco	1,438	65%
Brick Veneer	522	23%
Block Veneer	66	3%
Metal Railings/Screen	156	7%
Windows / Doors	44	2%
Total	2,226	100%

CITY APPROVALS

KIVA #: 20-883	PAPP #: 2009168
SDEV #: 2007633	PRLM: 2010833
CITY QUARTER SECTION: Q5-29	SCMJ # 2014900

MESA ROYALE PH4
644 W. Main St.
Mesa, AZ 85201

CHICANOS POR LA CAUSA
1008 EAST BUCKEYE ROAD,
STE 115 Phoenix, AZ 85034

Project: **MESA ROYALE PH4**

Owner: **CHICANOS POR LA CAUSA**

Drawn/Checked: **TK / NM**

Date: **09/26/24**

Project Number: **321028**

Sheet Number: **COLORED ELEVATIONS - BLDG 2**

A09.2.4