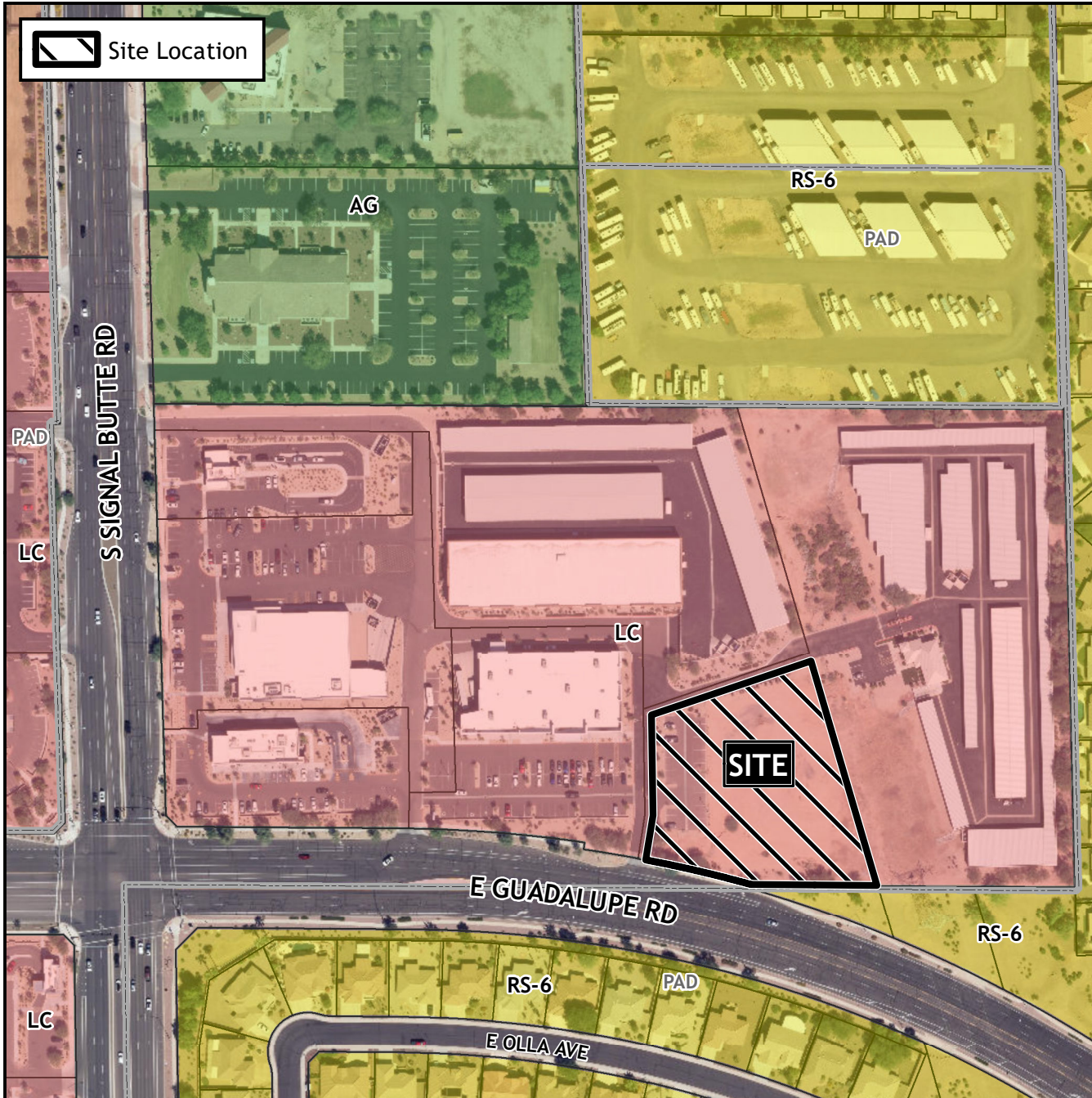


Planning and Zoning Vicinity Map: ZON23-00355

Case Details



CASE:

ZON23-00355

SITE / ADDRESS:

(District 6). Within the 10900 block of East Guadalupe Road (north side). Located east of Signal Butte Road on the north side of Guadalupe Road. (1.6± acres).

REQUEST:

Major Site Plan Modification and amending the conditions of approval for Case No. Z15-037. This request will allow for the development of a day care facility.

