

City of Mesa Rio Reimagined Work Plan



City of Mesa Study Session August 15th, 2024

*Nana Appiah, Director of Development Services
Andrea Moore, Director of Parks, Recreation, and Community Facilities
Erik Guderian, Assistant Director, Transportation
Laura Hyneman, Deputy Director, Environmental and Sustainability
Maria Laughner, Deputy Director, Economic Development
Ashley Scott, Management Assistant II, Development Services
Tye Hodson, Senior Planner, Development Services*

RIO SCALE & STAKEHOLDERS



- **6 cities, 2 tribal nations, Maricopa County, SRP, MAG, Non-profits**
- **Study area: 55+ miles, 1- 2 miles N/S of riverbanks** (Granite Reef Diversion Dam to SR 85)
- Priority projects differ by stakeholder – existing and designed, with **key federal partners** (EPA, DOI, USDA)
- **Diverse conditions:** health, hydrology, infrastructure, public access, planning structure, cultural history
- Opportunity to elevate **regional strategy** | approach for leveraged resources + projects over long-term
- **Diverse land ownership-** significant by federal agencies and private sector legacy industry
- **Multi-sector leadership** & commitment required: public/private/non-profit / academic / community

Background

- 1967-ASU class designed first concept plan covering 40-miles of the river corridor
- 1987 –Rio Salado Development District Plan created a concept plan covering 38 miles (Vetoed by voters)
- 2017-Senator McCain and Congressman Ed Pastor charge elected officials in the Valley to sign statement of intent
 - Agreement established commitment to actualization of the river as an icon landmark, and intent for economic and environmental vitality
 - ASU identified as the “facilitator” of the program
- 2023 signed IGA/MOU with MAG, Maricopa County, City of Mesa, six other cities, and tribal governments and political subdivisions to hire “urban waters” ambassador to coordinate regional efforts

PROJECT ASPIRATIONS

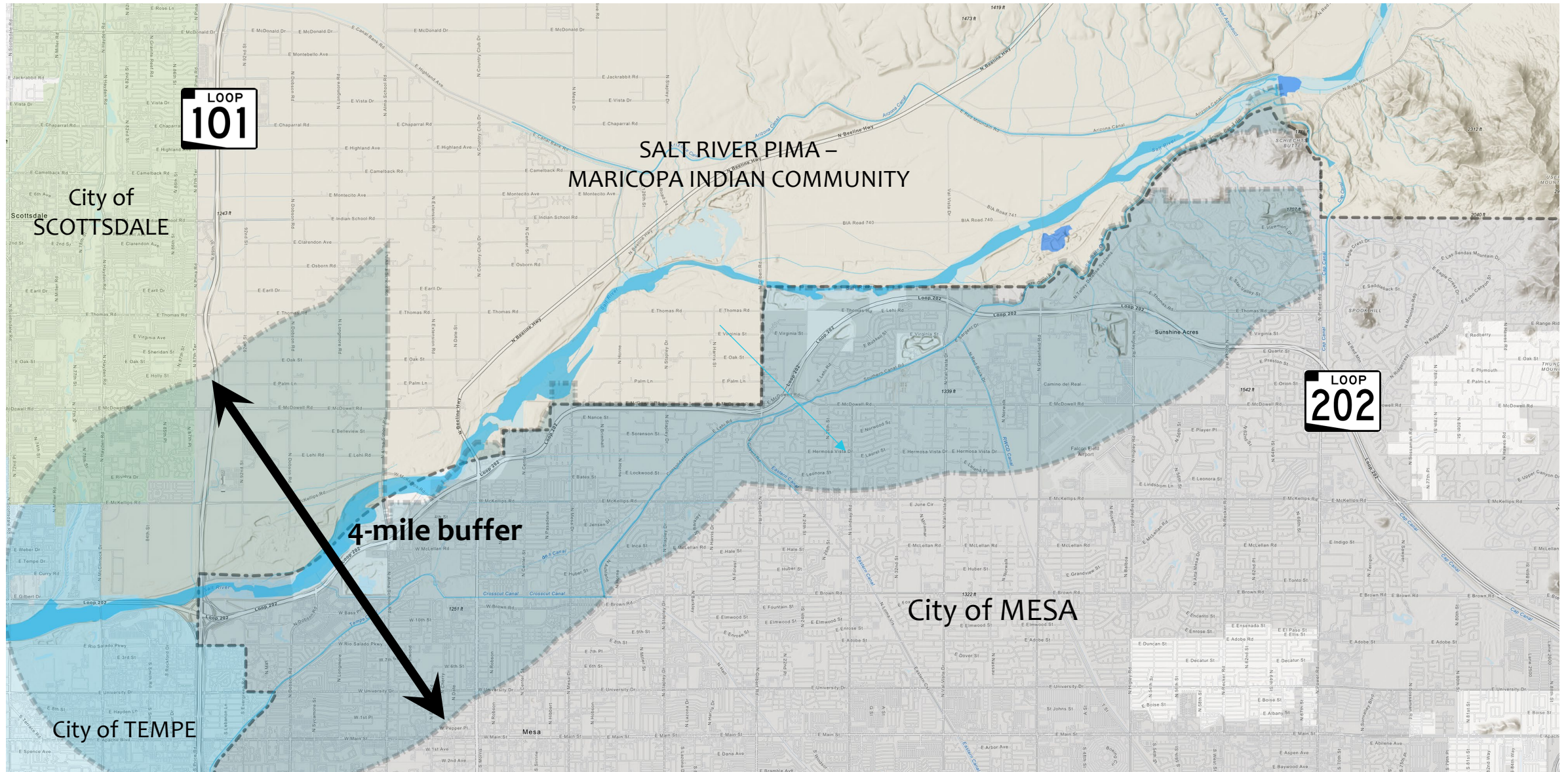
- **RECONNECT THE COMMUNITY TO THE RIVER**
 - Acknowledge industrial and agricultural legacy of river industries
 - Expand public access for recreation, etc.
 - Reinforce environmental/ecosystem value of open space
- **ESTABLISH A METROPOLITAN VISION**
 - Signal an exemplary regional collaboration for a metro region
 - Increase access to education, training, housing, employment & health services
- **CATALYZE ECONOMIC GROWTH & INCLUSION**
 - Recognize and empower the next generation of leaders
 - Acknowledge/address threats of gentrification
 - Create test bed for innovative financing and technology
- **DEMONSTRATE SUSTAINABLE PLANNING**
 - Identify opportunities for water storage, reuse, harvesting
 - Develop community-led solutions for climate change challenges



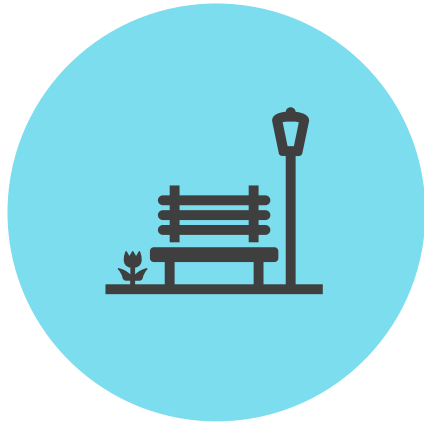
THE RIO REIMAGINED STUDY AREA: 55+ miles, 1-2 miles above the banks



Rio Reimagined Mesa Project Boundary



City of Mesa Goals for Rio Reimagined



RECREATION



ENVIRONMENT

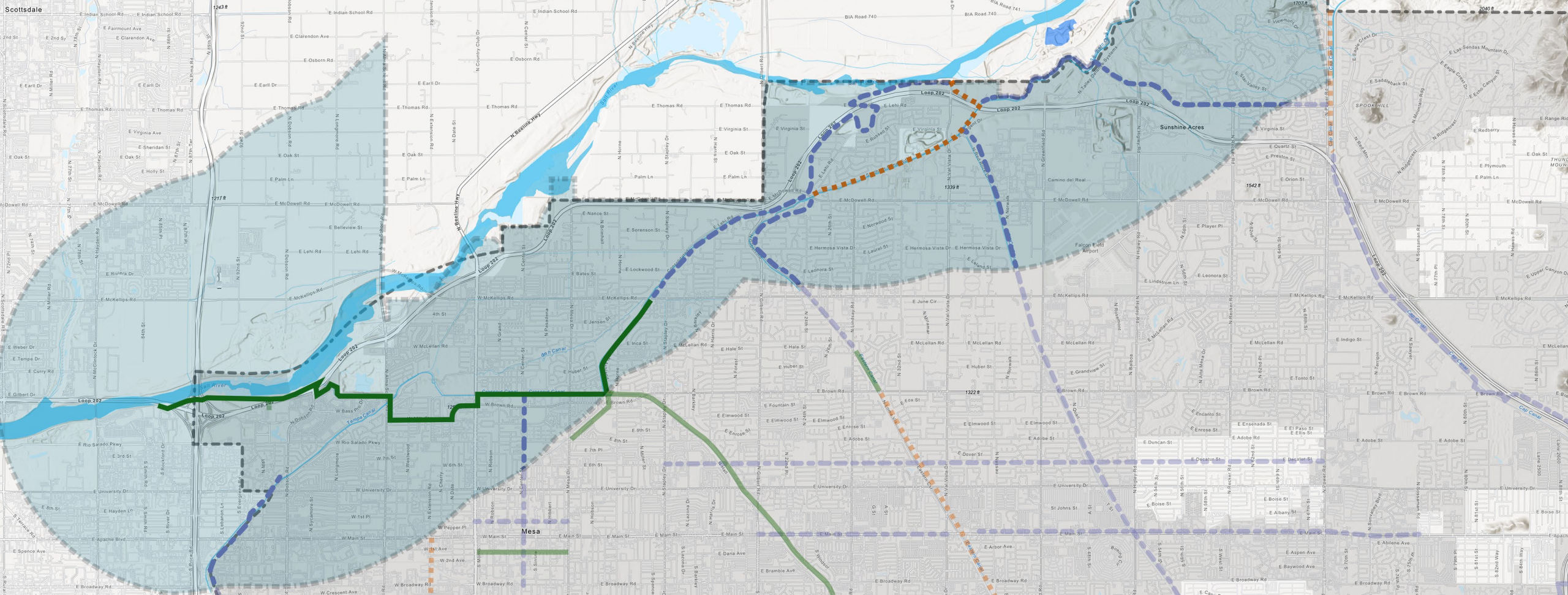


**ECONOMIC
OPPORTUNITY**



Mesa Shared-Use Paths

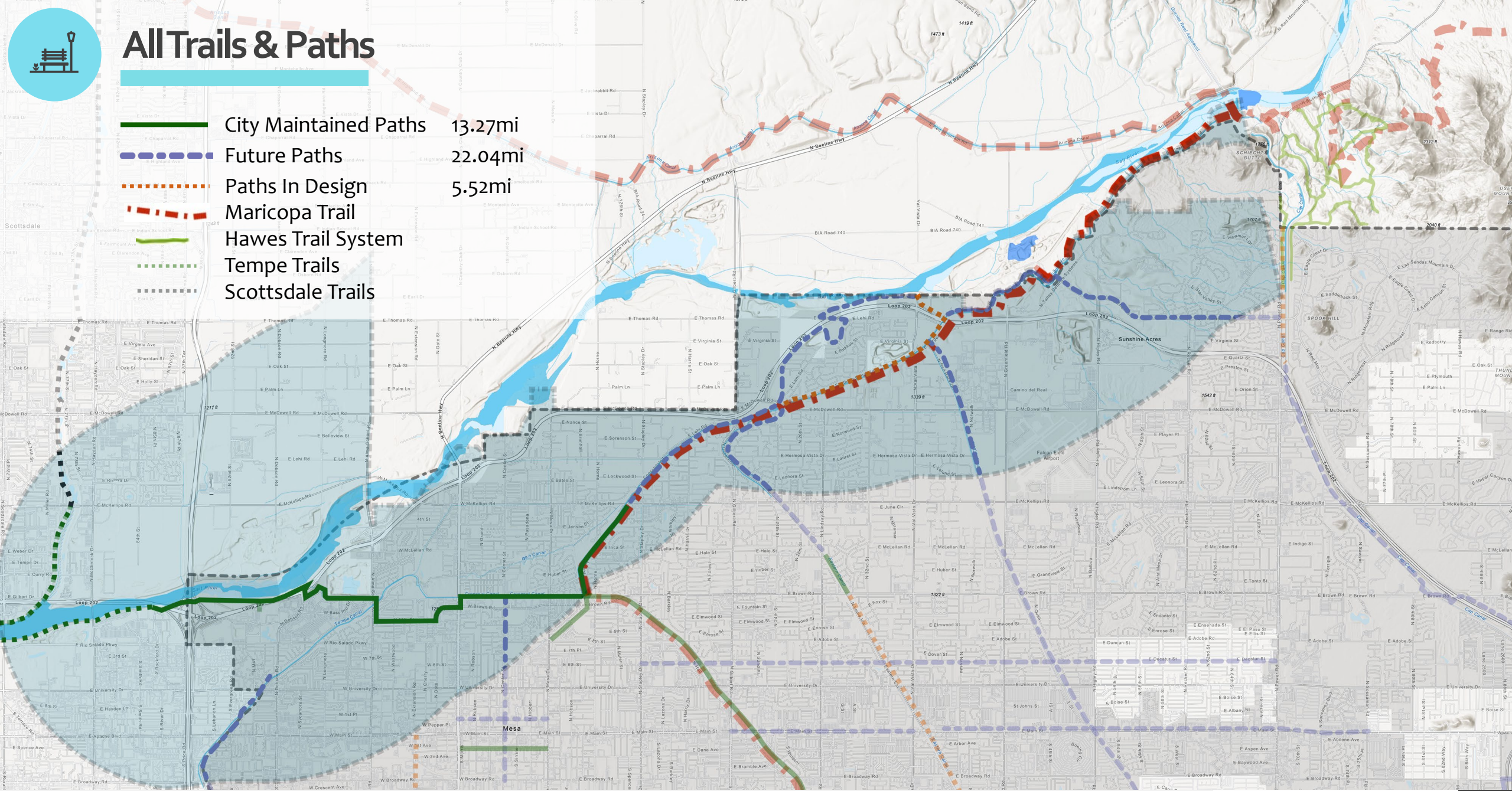
	City Maintained Paths	13.27mi
	Future Paths	22.04mi
	Paths In Design	5.52mi





All Trails & Paths

	City Maintained Paths	13.27mi
	Future Paths	22.04mi
	Paths In Design	5.52mi
	Maricopa Trail	
	Hawes Trail System	
	Tempe Trails	
	Scottsdale Trails	

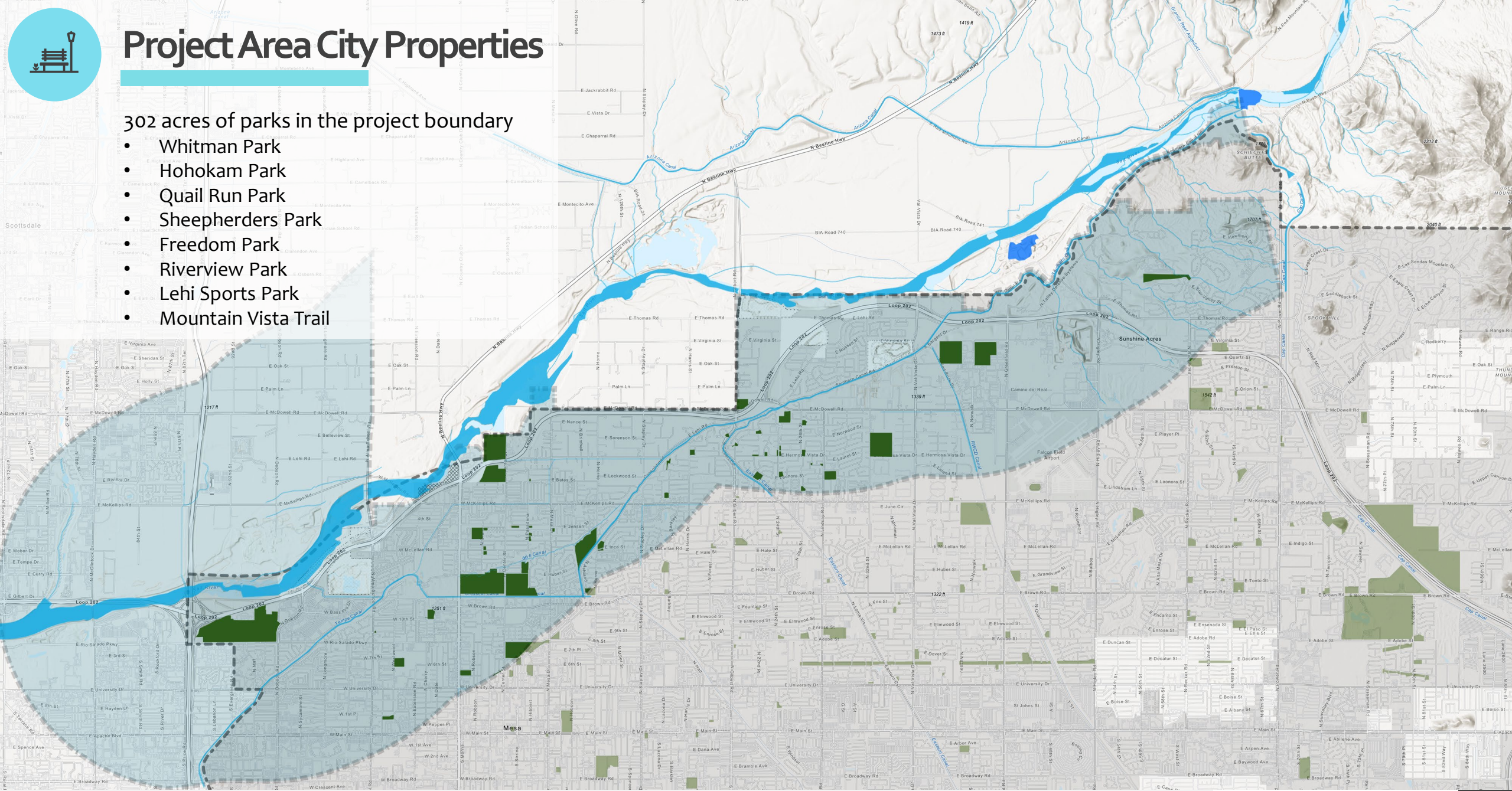




Project Area City Properties

302 acres of parks in the project boundary

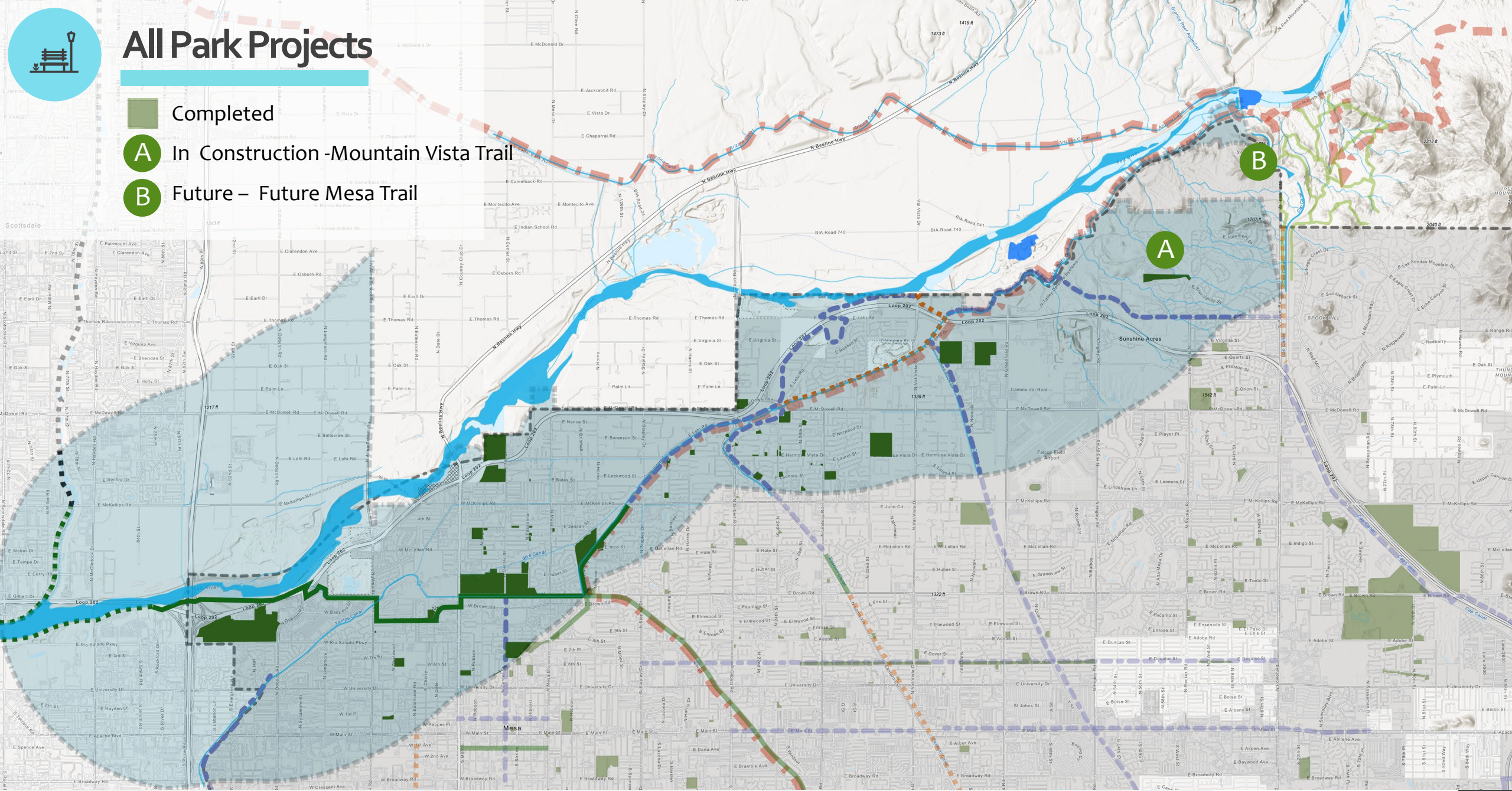
- Whitman Park
- Hohokam Park
- Quail Run Park
- Shepherders Park
- Freedom Park
- Riverview Park
- Lehi Sports Park
- Mountain Vista Trail





All Park Projects

- Completed
- A In Construction -Mountain Vista Trail
- B Future – Future Mesa Trail

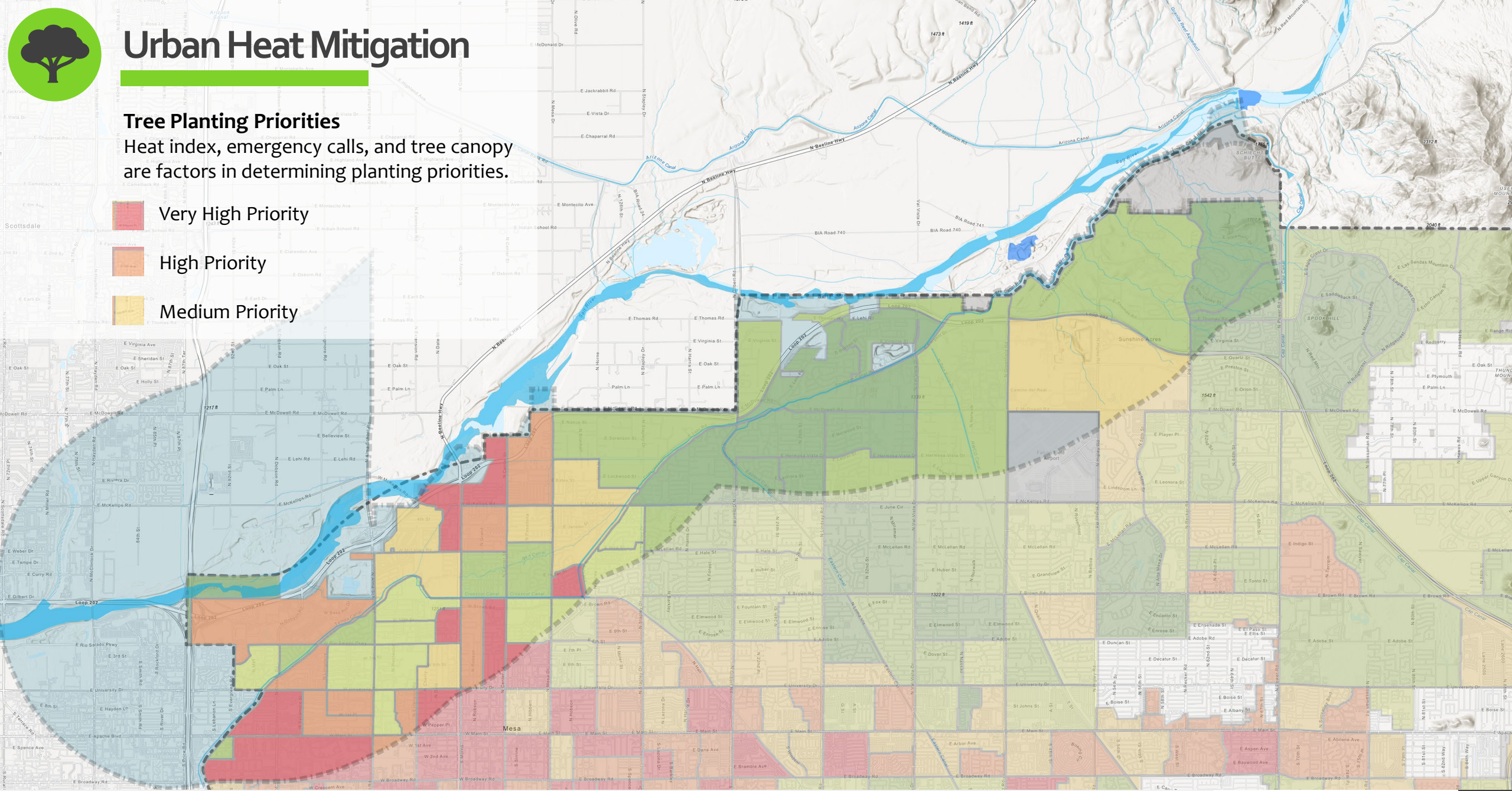
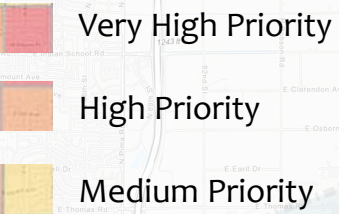




Urban Heat Mitigation

Tree Planting Priorities

Heat index, emergency calls, and tree canopy are factors in determining planting priorities.





Urban Water Conveyance



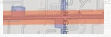
Stormwater Outfalls

22 Facilities

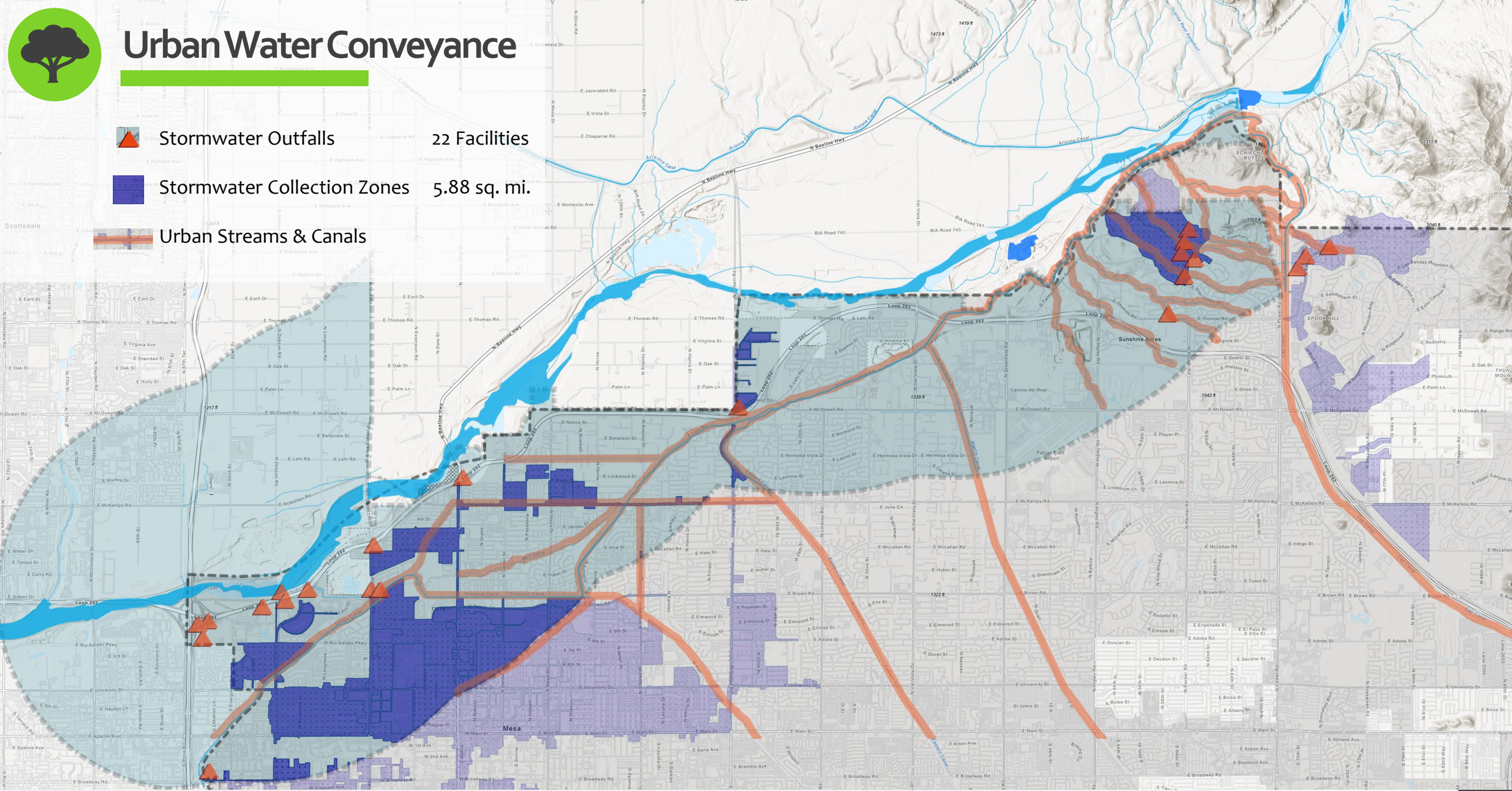


Stormwater Collection Zones

5.88 sq. mi.



Urban Streams & Canals

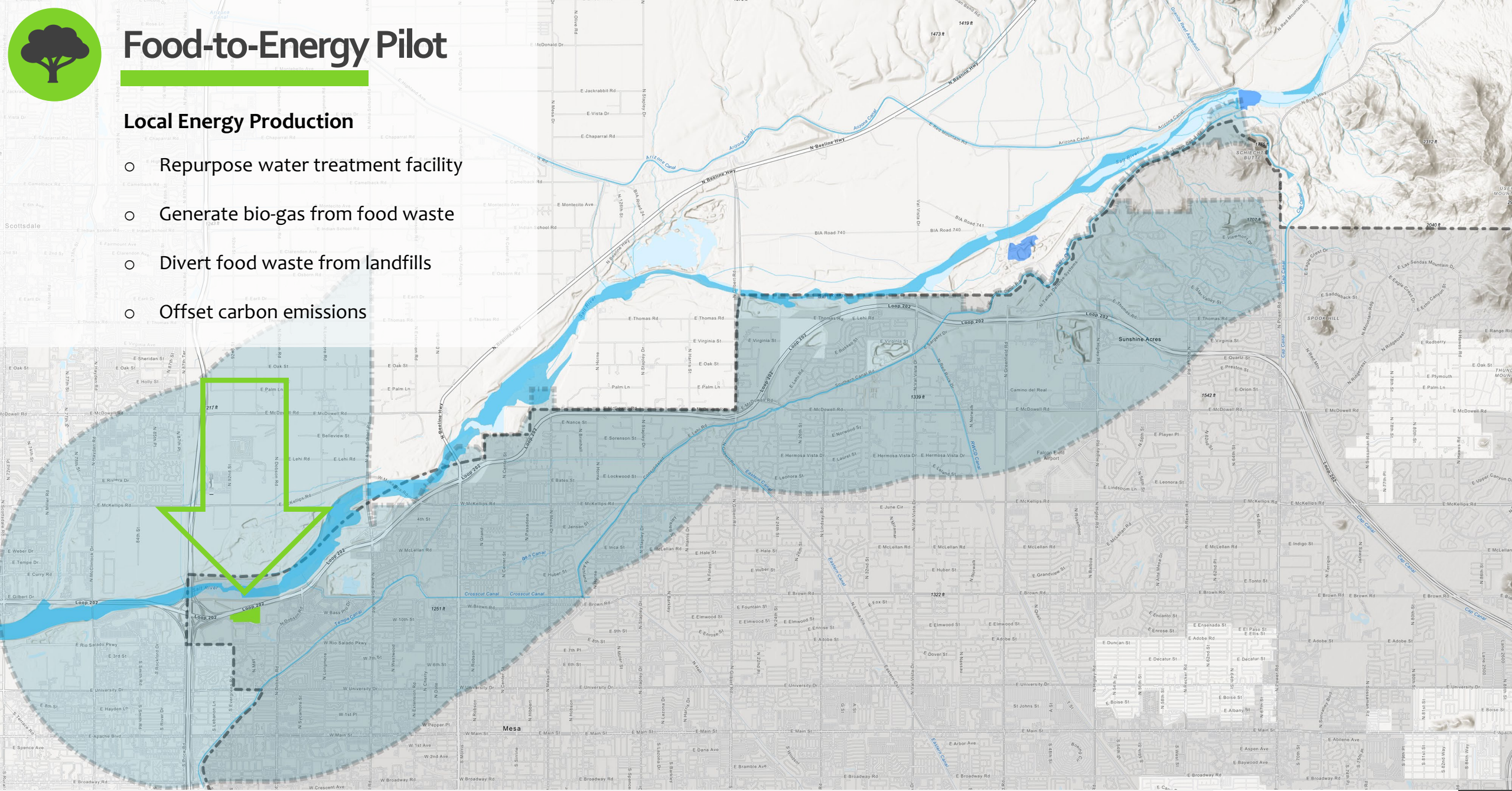




Food-to-Energy Pilot

Local Energy Production

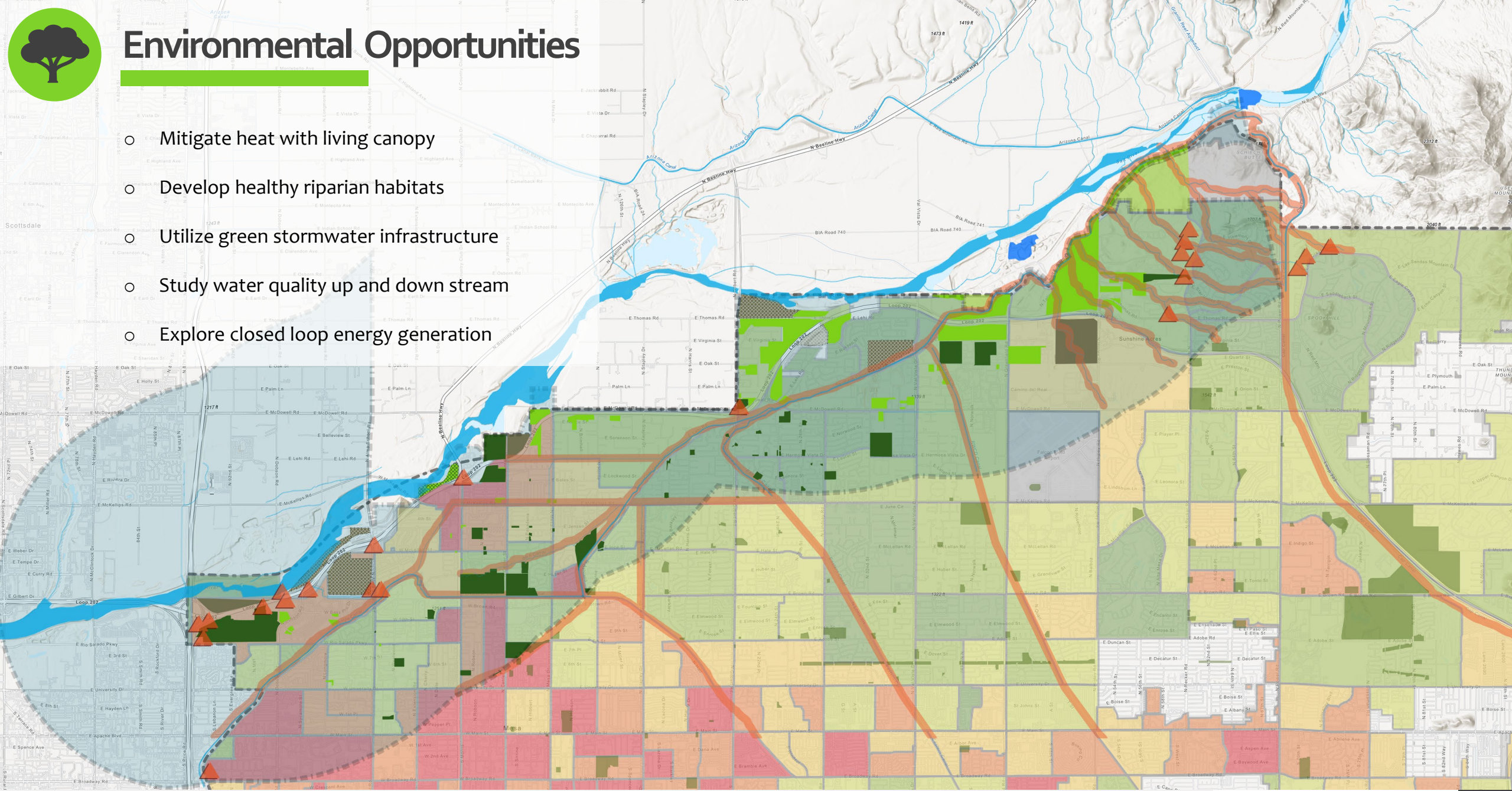
- Repurpose water treatment facility
- Generate bio-gas from food waste
- Divert food waste from landfills
- Offset carbon emissions





Environmental Opportunities

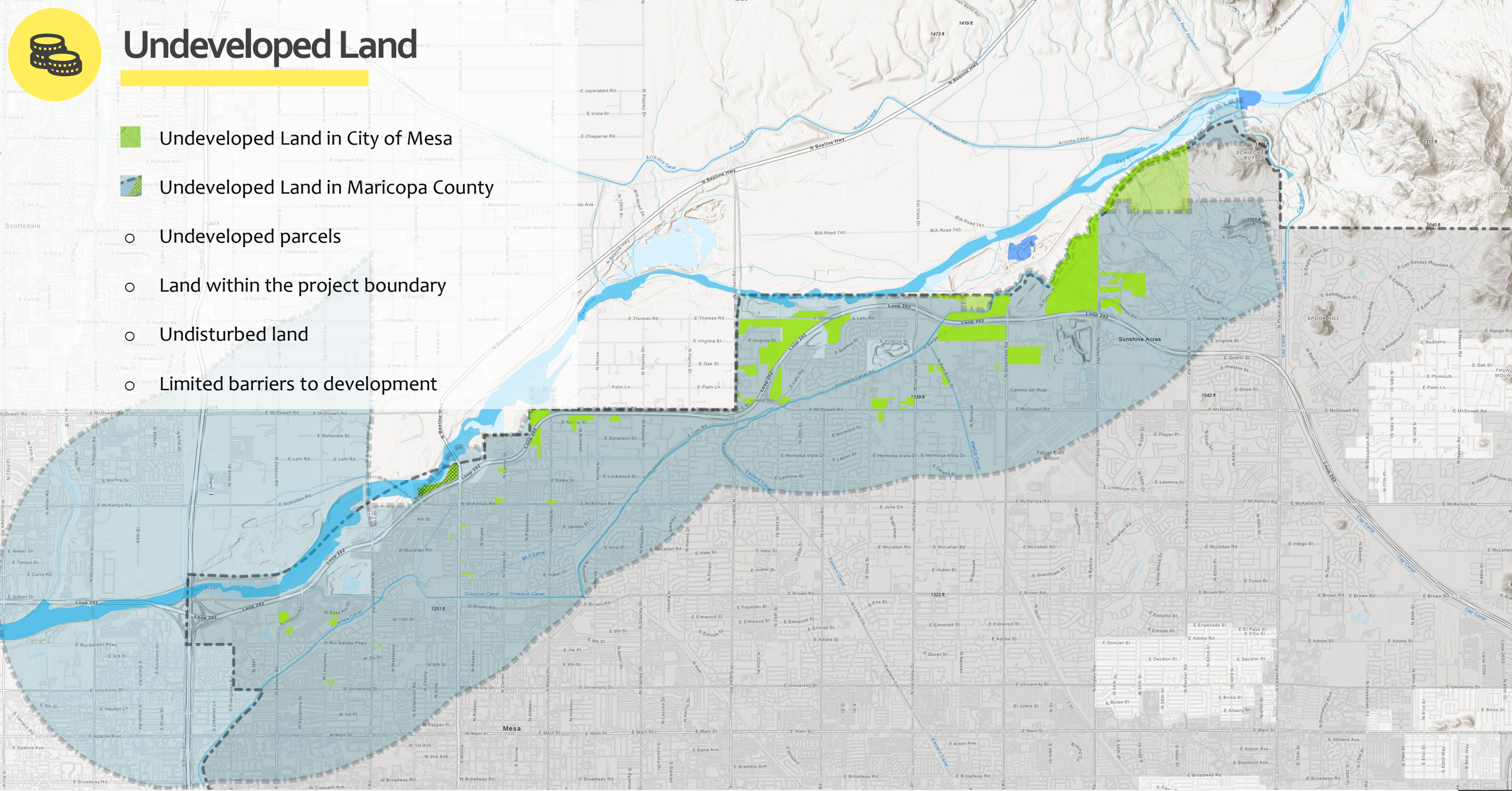
- Mitigate heat with living canopy
- Develop healthy riparian habitats
- Utilize green stormwater infrastructure
- Study water quality up and down stream
- Explore closed loop energy generation





Undeveloped Land

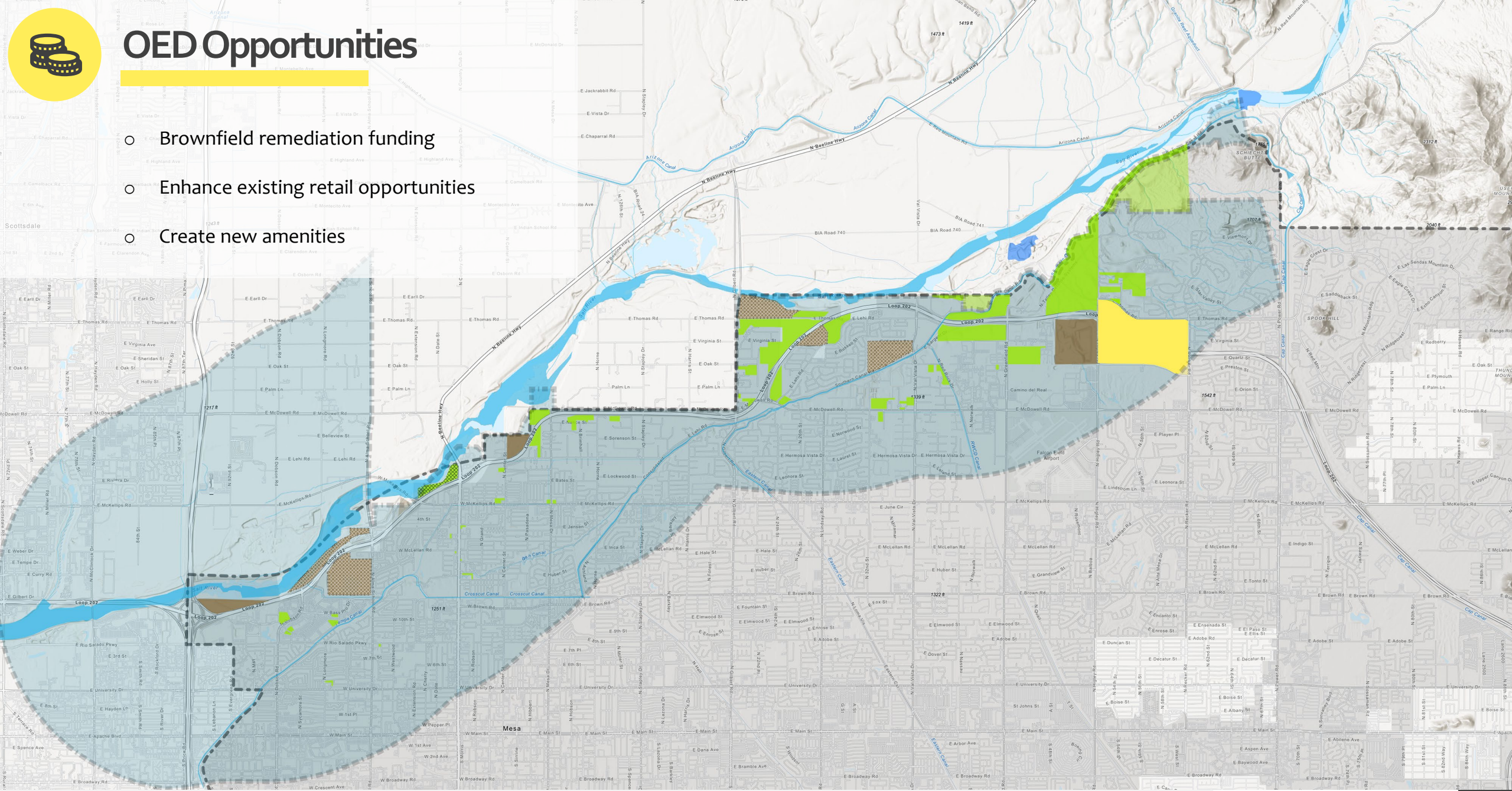
- Undeveloped Land in City of Mesa
- Undeveloped Land in Maricopa County
 - Undeveloped parcels
 - Land within the project boundary
 - Undisturbed land
 - Limited barriers to development





OED Opportunities

- Brownfield remediation funding
- Enhance existing retail opportunities
- Create new amenities





MESA Opportunities

- Shared-Use paths near Loop 202
- Future Mesa Trail
- Tree planting projects
- Develop healthy riparian habitats
- Green stormwater infrastructure
- Food-to-Energy program
- Brownfield remediation funding
- VA Shay'Ay Akimel Plan



MAP LEGEND



Stormwater Outfalls



Tree Planting Priorities



Future Mesa Trail



Parks



City Maintained Paths



Future Paths



Paths In Design



Maricopa Trail



Hawes Trail System



Tempe Trails



Scottsdale Trails

- **Continue coordination with MAG and other jurisdictions**
- **Coordinate with MAG to issue a Request for Proposals for consultant services to engage RIO communities in designing an inclusive vision planning process**
- **Continue to update City Council and other stakeholders**

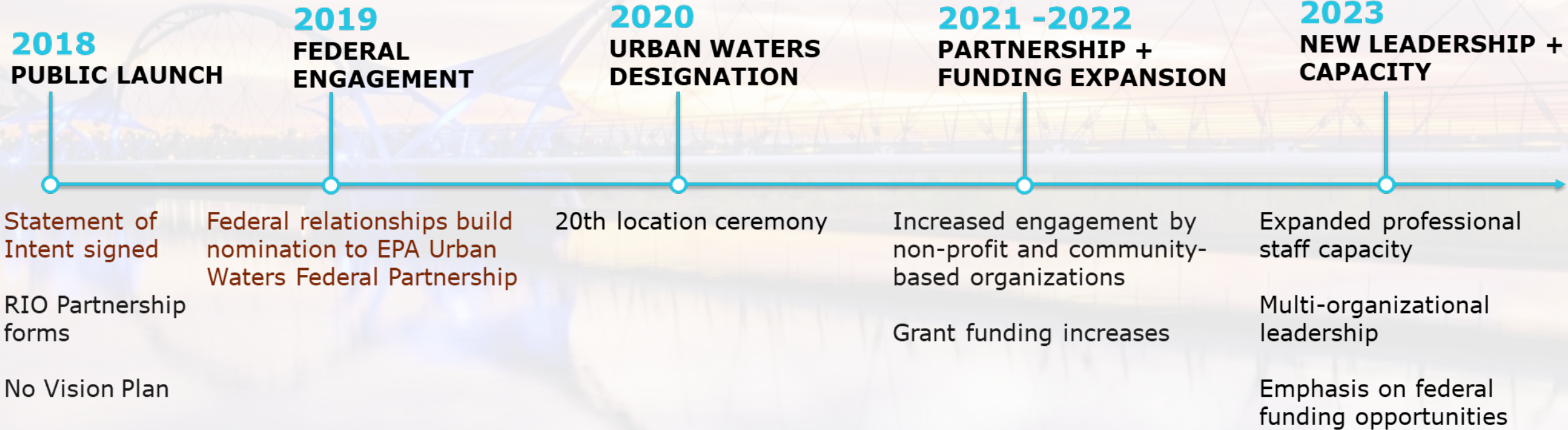
Thank You





mesa·az

RIO REIMAGINED BENCHMARKS



Study Boundary for Rio Reimagined

