

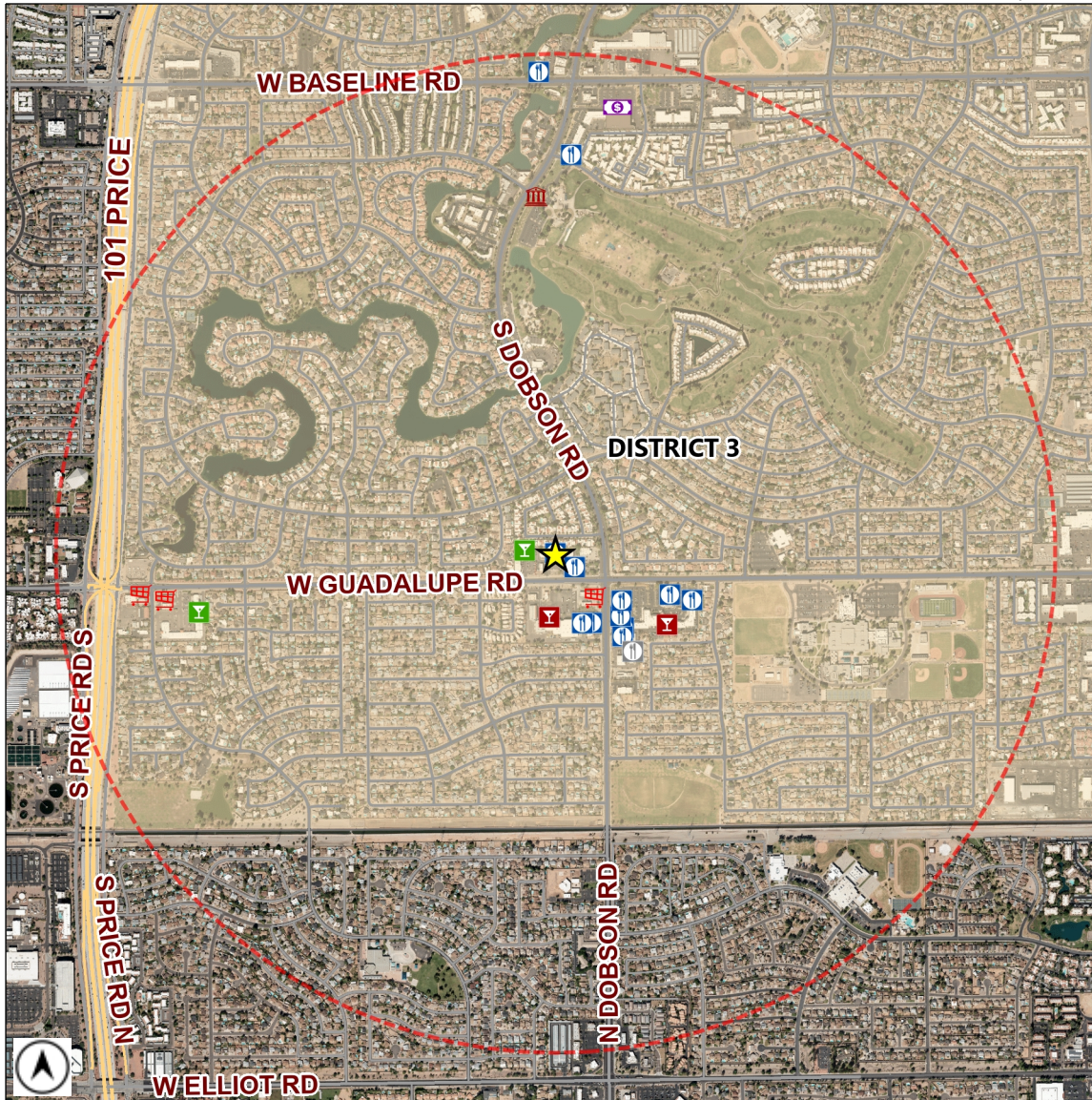


Liquor License Map

City of Mesa Tax & Licensing

Requesting Approval: ★ **309 SPORTS LOUNGE**
2050 W GUADALUPE RD
 License Type: **9-12 RESTAURANT (PEND)**
 License Number: **LICA26-24275**

Estimated Population (1 Mile): **16197**
 Source: MAG ACS 2013-2017 5 year data



	BAR	2		CLUB	0		HOTEL-MOTEL	0		MICRO-BREWERY	0
	BAR (PEND)	0		CLUB (PEND)	0		HOTEL-MOTEL (PEND)	0		MICRO-BREWERY (PEND)	0
	BEER / WINE BAR	2		CONVEYANCE	0		IN-STATE PRODUCER	0		RESTAURANT	13
	BEER / WINE BAR (PEND)	0		CONVEYANCE (PEND)	0		IN-STATE PRODUCER (PEND)	0		RESTAURANT (PEND)	1
	BEER / WINE STORE	4		DOMESTIC FARM WINERY	0		LIQUOR STORE	0		WHOLESALE	0
	BEER / WINE STORE (PEND)	0		DOMESTIC FARM WINERY (PEND)	0		LIQUOR STORE (PEND)	0		WHOLESALE (PEND)	0
	BEER / WINE STORE / SAMPLING	0		GOVERNMENT	1		LIQUOR STORE / SAMPLING	1		1 MILE BUFFER	
	BEER / WINE STORE / SAMPLING (PEND)	0		GOVERNMENT (PEND)	0		LIQUOR STORE / SAMPLING (PEND)	0			

Total Count: 24 liquor licenses