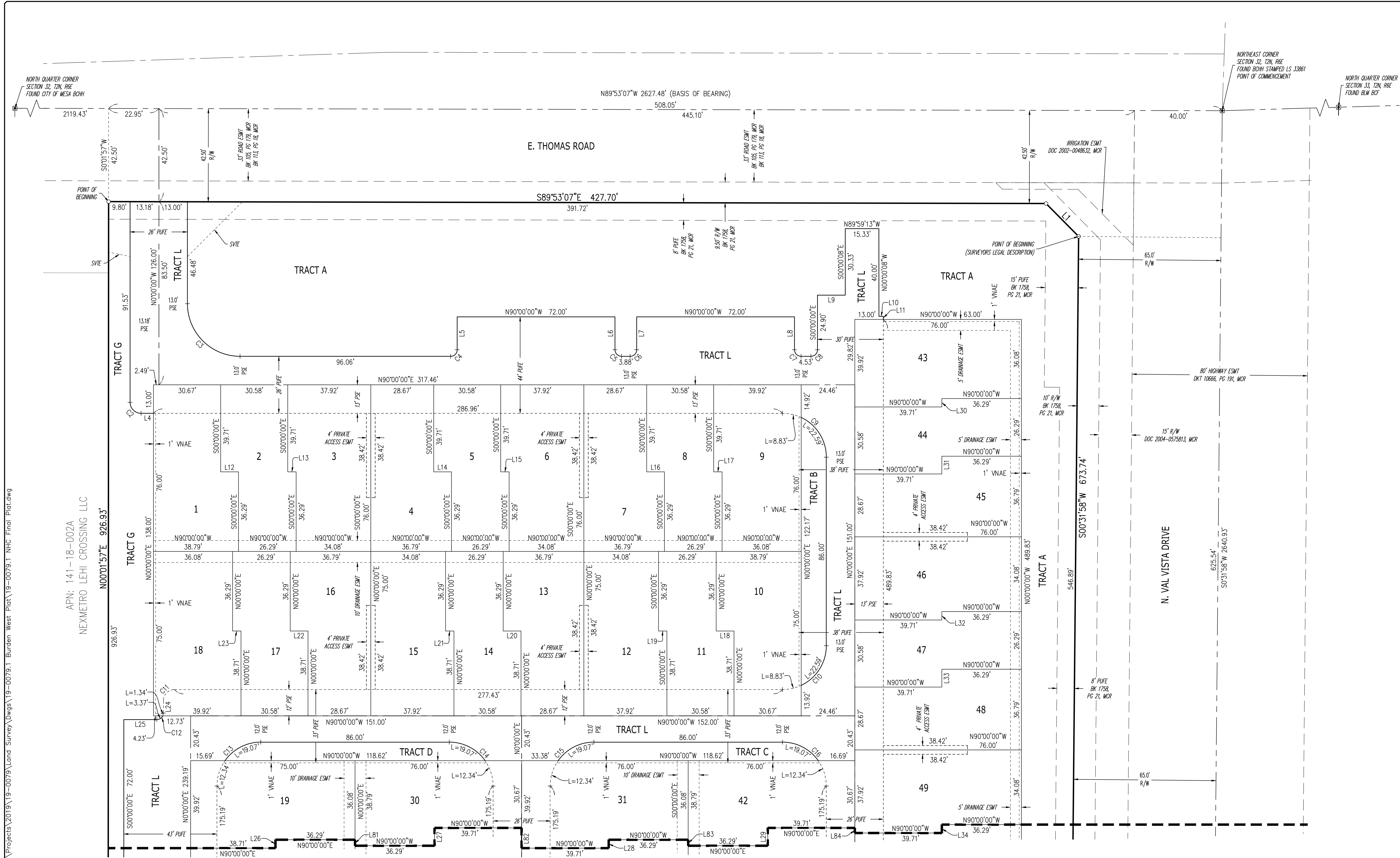


Feb 13, 2025 9:13am S:\Projects\2019\19-0079\Land Survey\Drawings\19-0079.1 NHC Final Plat.dwg

APN: 141-18-002A
NEXMETRO LEHI CROSSING LLC

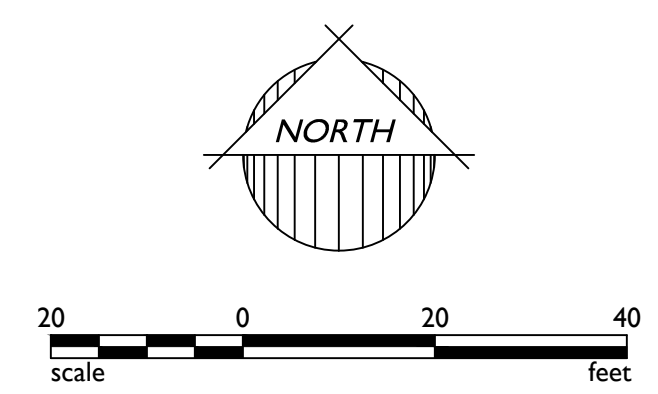


LEGEND

- | | | |
|--|---|--|
| <ul style="list-style-type: none"> ● FOUND MONUMENT IN HAND HOLE AS NOTED ○ FOUND MONUMENT FLUSH AS NOTED ⊕ IRON PIPE AS NOTED ● FOUND MONUMENT AS NOTED ○ SET 1/2" REBAR W/CAP "EPS GROUP RLS 37495", UNLESS OTHERWISE NOTED FD FOUND MON MONUMENT BCHH BRASS CAP IN HAND HOLE BCF BRASS CAP FLUSH | <ul style="list-style-type: none"> BC BRASS CAP IP IRON PIPE SFNF SEARCHED FOR NOT FOUND C&SRM GILA AND SALT RIVER MERIDIAN MCR MARICOPA COUNTY RECORDER DOC DOCUMENT DKT DOCKET BK BOOK PG PAGE R/W RIGHT OF WAY | <ul style="list-style-type: none"> PUE PUBLIC UTILITY EASEMENT PUFE PUBLIC UTILITY AND FACILITY EASEMENT ESMT EASEMENT BLM BUREAU OF LAND MANAGEMENT PSE PRIVATE STREET EASEMENT SVTE SIGHT VISIBILITY TRIANGLE EASEMENT VNAE VEHICLE NON-ACCESS EASEMENT |
|--|---|--|

- | | |
|--|--|
| <ul style="list-style-type: none"> — BOUNDARY LINE — PARCEL LINE — LOT LINE — SECTION LINE — MID-SECTION LINE | <ul style="list-style-type: none"> — CENTER LINE ROAD — EXISTING R/W — EASEMENT LINE (SCHEDULE B) — QUARTER-SECTION LINE — EXISTING EASEMENT LINE |
|--|--|

MATCH LINE SEE SHEET 3 OF 5



BURDEN WEST AT PIONEER CROSSING
MESA, ARIZONA
FINAL PLAT

Project: _____

Revisions: _____

Call at least two full working days before any legal recording.

ARIZONA
STATE SURVEY

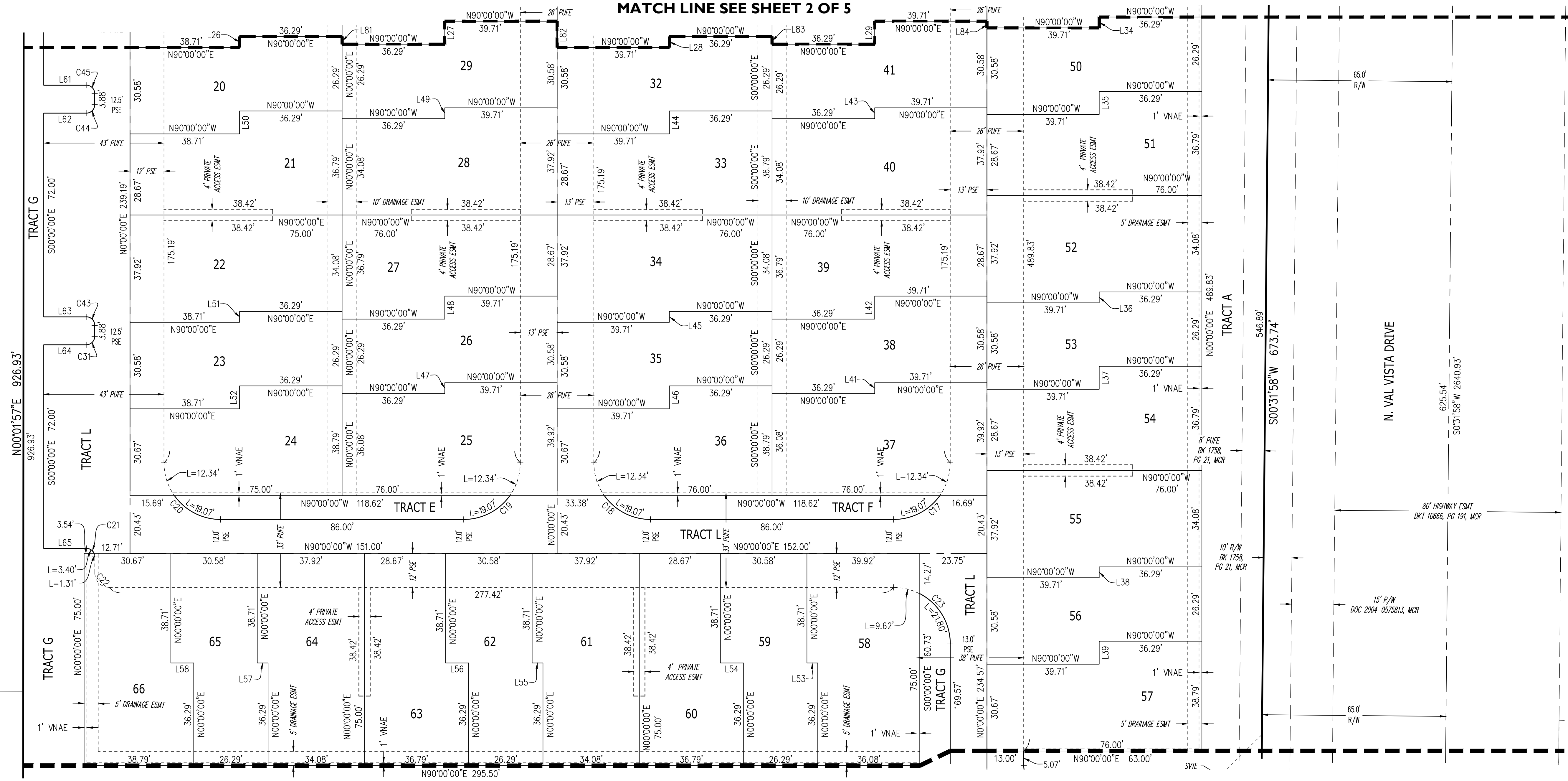
Drawn by: LFT
Reviewed by: RSM

REGISTERED LAND SURVEYOR
37495
ROBERT A. JOHNSTON

Job No:
19-0079.1
PLAT
Sheet No.
2
of 5

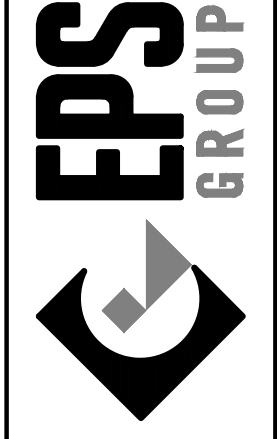
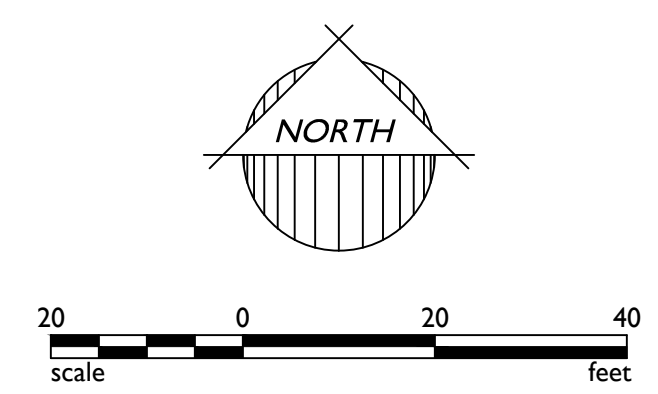
1130 N. Alma School Rd., Suite 120
Mesa, AZ 85201
T: 480.503.2250 | F: 480.835.1709
www.epsgroupinc.com

APN: 141-18-002A
NEXMETRO LEHI CROSSING LLC



LEGEND

<ul style="list-style-type: none"> ● FOUND MONUMENT IN HAND HOLE AS NOTED ○ FOUND MONUMENT FLUSH AS NOTED ⊙ IRON PIPE AS NOTED ● FOUND MONUMENT AS NOTED ○ SET 1/2" REBAR W/CAP "EPS GROUP RLS 37495", UNLESS OTHERWISE NOTED FD FOUND MON MONUMENT BCHH BRASS CAP IN HAND HOLE BCF BRASS CAP FLUSH BC BRASS CAP IP IRON PIPE SFNF SEARCHED FOR NOT FOUND G&SRM GILA AND SALT RIVER MERIDIAN MCR MARICOPA COUNTY RECORDER DOC DOCUMENT DKT DOCKET BK BOOK PG PAGE R/W RIGHT OF WAY 	<ul style="list-style-type: none"> PUE PUBLIC UTILITY EASEMENT PUFE PUBLIC UTILITY AND FACILITY EASEMENT ESMT EASEMENT BLM BUREAU OF LAND MANAGEMENT PSE PRIVATE STREET EASEMENT SVTE SIGHT VISIBILITY TRIANGLE EASEMENT VNAE VEHICLE NON-ACCESS EASEMENT 	<ul style="list-style-type: none"> BOUNDARY LINE PARCEL LINE LOT LINE SECTION LINE MID-SECTION LINE CENTER LINE ROAD EXISTING R/W EASEMENT LINE (SCHEDULE B) QUARTER-SECTION LINE EXISTING EASEMENT LINE
---	--	--



BURDEN WEST AT PIONEER CROSSING FINAL PLAT

Project: _____

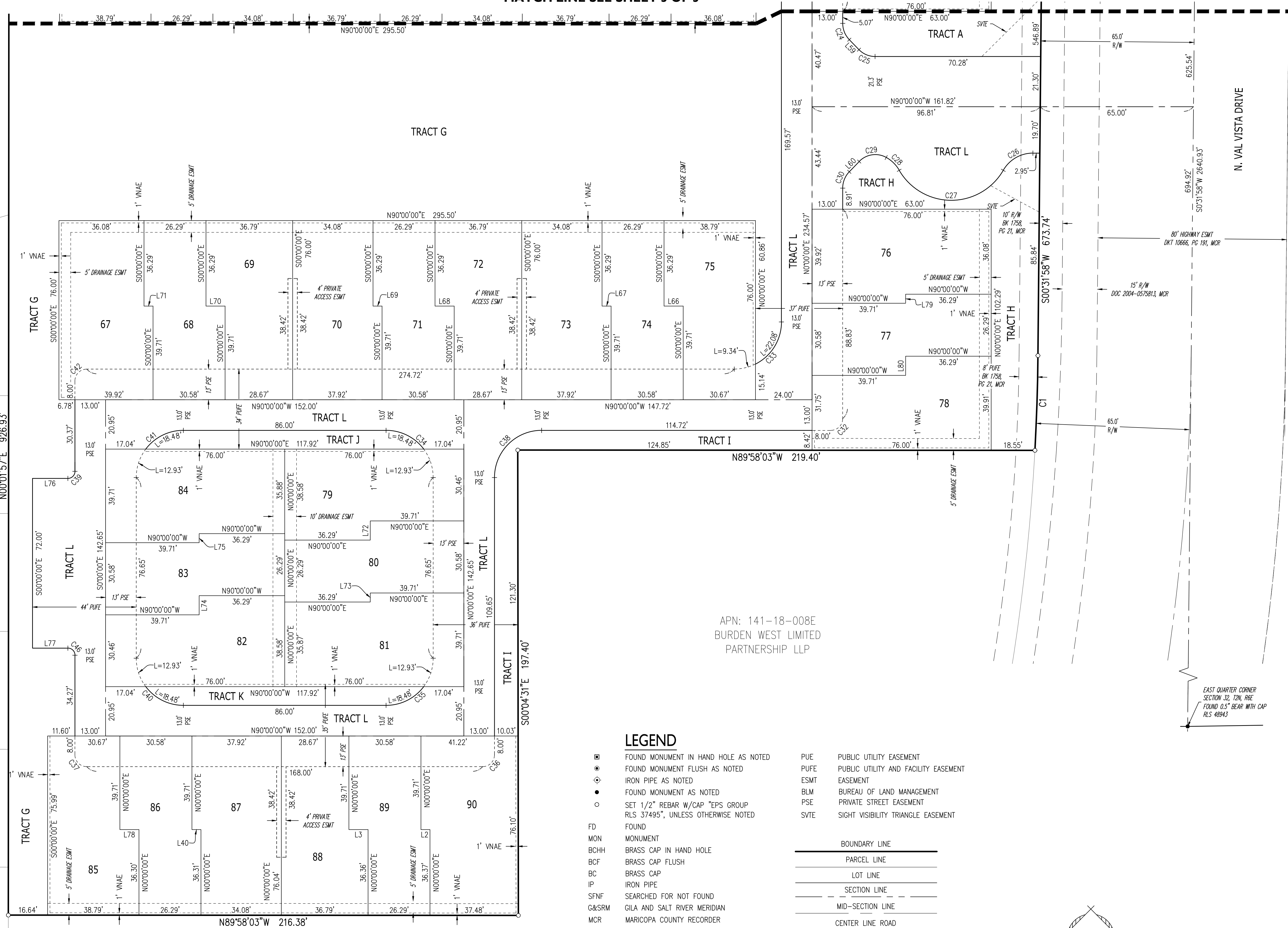
Revisions:

Call at least two full working days before any final acceptance.
ARIZONA
State of Arizona
Professional Engineer
No. 37495
Robert A. Johnston
Mesa, Arizona

Drawn by: LFT
Reviewed by: RSM

Job No:
19-0079.1
PLAT
Sheet No.
3
of 5

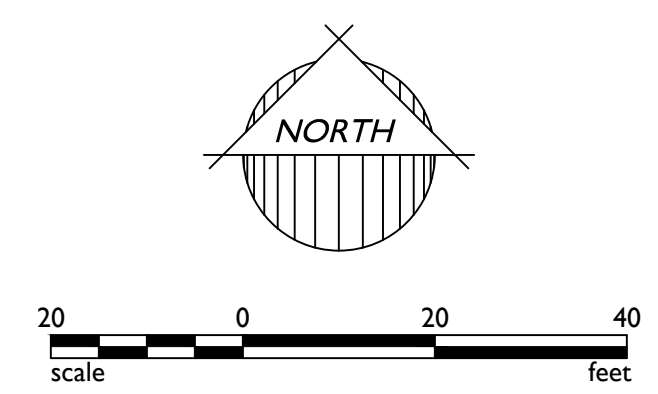
MATCH LINE SEE SHEET 3 OF 5



APN: 141-18-008E
BURDEN WEST LIMITED
PARTNERSHIP LLP

EAST QUARTER CORNER
SECTION 32, T2N, R2E
FOUND 0.5" BEAR WITH CAP
RLS 48943

<ul style="list-style-type: none"> ■ FOUND MONUMENT IN HAND HOLE AS NOTED ● FOUND MONUMENT FLUSH AS NOTED ○ IRON PIPE AS NOTED ● FOUND MONUMENT AS NOTED ○ SET 1/2" REBAR W/CAP "EPS GROUP RLS 37495", UNLESS OTHERWISE NOTED FD FOUND MON MONUMENT BCHH BRASS CAP IN HAND HOLE BCF BRASS CAP FLUSH BC BRASS CAP IP IRON PIPE SFNF SEARCHED FOR NOT FOUND C&SRM GILA AND SALT RIVER MERIDIAN MCR MARICOPA COUNTY RECORDER DOC DOCUMENT DKT DOCKET BK BOOK PG PAGE R/W RIGHT OF WAY VNAE VEHICLE NON-ACCESS EASEMENT 	<ul style="list-style-type: none"> PUE PUBLIC UTILITY EASEMENT PUFE PUBLIC UTILITY AND FACILITY EASEMENT ESMT EASEMENT BLM BUREAU OF LAND MANAGEMENT PSE PRIVATE STREET EASEMENT SVTE SIGHT VISIBILITY TRIANGLE EASEMENT 	<ul style="list-style-type: none"> — BOUNDARY LINE — PARCEL LINE — LOT LINE - - - SECTION LINE - - - MID-SECTION LINE - - - CENTER LINE ROAD - - - EXISTING R/W - - - EASEMENT LINE (SCHEDULE B) - - - QUARTER-SECTION LINE - - - EXISTING EASEMENT LINE
---	--	--



APN: 141-19-592 LEWIS KELLY/ NATHAN/BEXTER MUELLER RICHARD ALLEN/ KATHLENE MARIE	APN: 141-19-594 HOLYOAK BRANDON/ KENDRIA	APN: 141-19-595 SEAMAN AARON/ ASRAR AMBAR	APN: 141-19-596 JEFFS JOSHUA/BRITTANY	APN: 141-19-597 LEBER JARED/ELIZABETH
---	--	---	--	--

APN: 141-18-008E
BURDEN WEST LIMITED
PARTNERSHIP LLP

BURDEN WEST AT PIONEER CROSSING
MESA, ARIZONA
FINAL PLAT

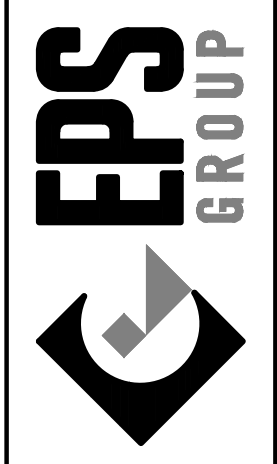
Project: _____

Revisions: _____

Drawn by: LFT
Reviewed by: RSM

REGISTERED LAND SURVEYOR
37495
ROBERT A. JOHNSTON

Job No:
19-0079.1
PLAT
Sheet No.
4
of 5



1130 N. Alma School Rd, Suite 120
Mesa, AZ 85201
T:480.503.2350 | F:480.835.1799
www.epsgroupinc.com

