



ARCHICON

Architecture & Interiors, L.C.

5055 E WASHINGTON STREET  
SUITE 200  
PHOENIX, ARIZONA 85034  
(602) 222-4266  
FAX (602) 279-4305  
www.ARCHICON.COM

T.W.C. PROPERTIES  
6447 SOUTH MOUNTAIN ROAD  
MESA, ARIZONA 85212

JOB NO: 2186820-01

PROJECT MGR: GWJ

DRAWN BY: GWJ

CHECKED BY: GWJ

NO. REV. DESCRIPTION DATE

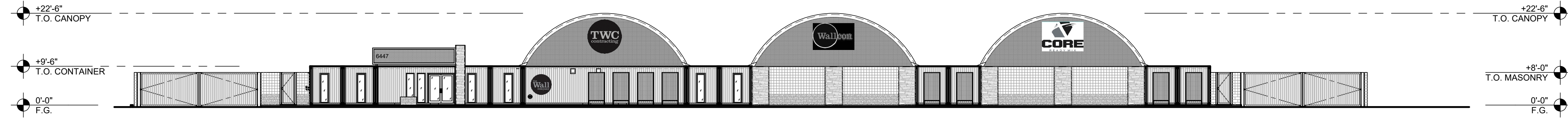
NO.	REV.	DESCRIPTION	DATE

SHEET TITLE:  
PRELIMINARY  
EXTERIOR  
ELEVATIONS



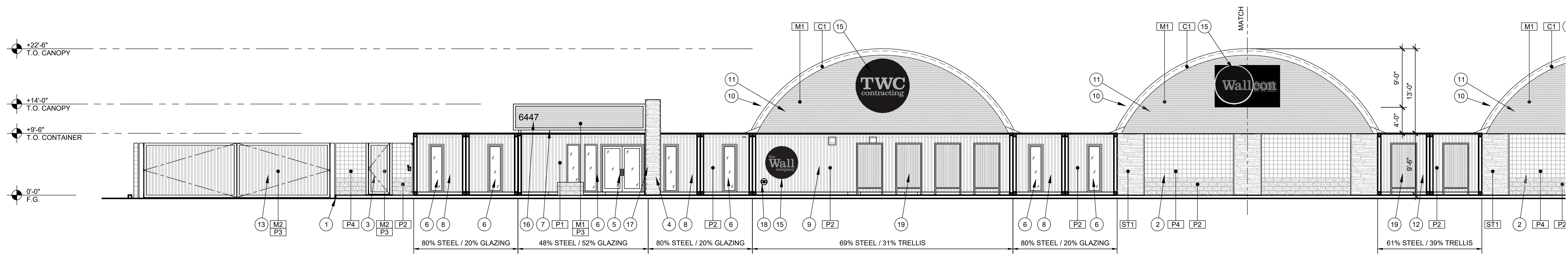
A301

ISSUE DATE: 2021.12.21



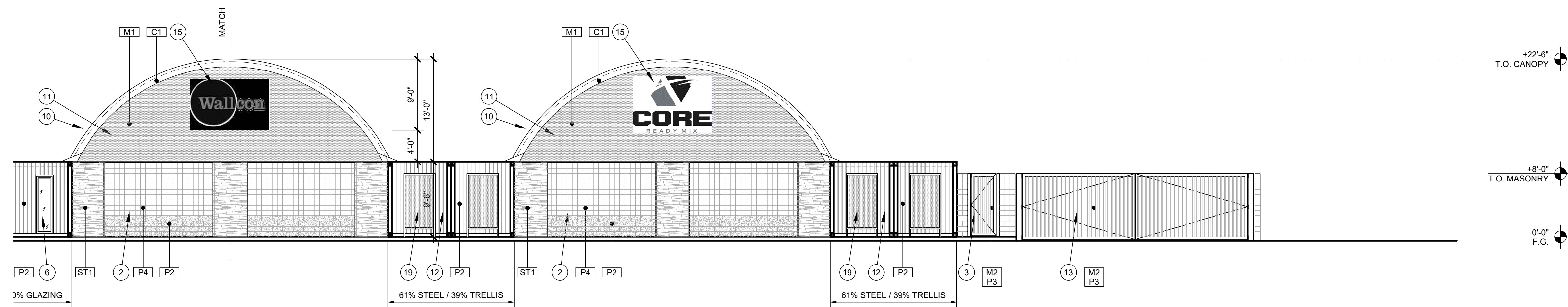
1 OVERALL EXTERIOR ELEVATION - WEST

SCALE: 1/16" = 1'-0"



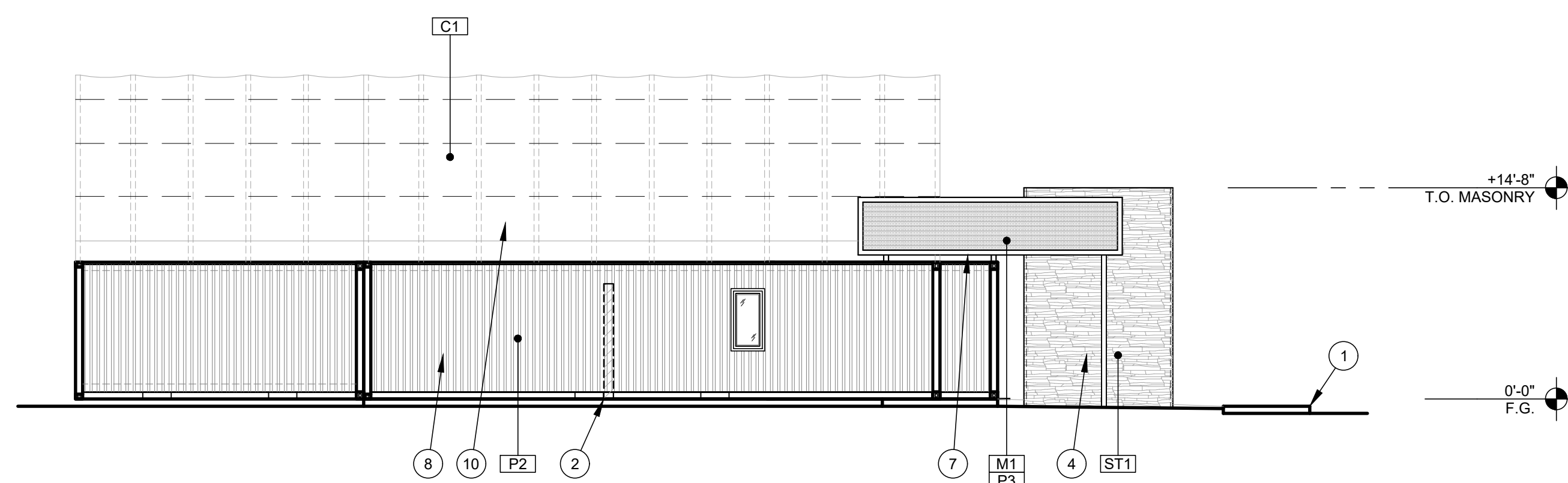
2 EXTERIOR ELEVATION - WEST

SCALE: 1/8" = 1'-0"



3 EXTERIOR ELEVATION - WEST

SCALE: 1/8" = 1'-0"



4 EXTERIOR ELEVATION - NORTH

SCALE: 1/8" = 1'-0"

1. CONCRETE SIDEWALK ON GRADE, TYP.
2. 8" X 8" X 16" CENTER SCORED CONCRETE MASONRY UNIT (C.M.U.) OVER 32" HIGH 8" X 8" X 16" SPLIT FACED CONCRETE MASONRY UNIT WAINSCOT SITE WALL, TYP.
3. 4'-0" WIDE STEEL FRAMED GATE WITH METAL PANELING INFILL, TYP.
4. CULTURED STONE VENEER OVER 8" X 8" X 16" CONCRETE MASONRY UNIT (C.M.U.) ENTRY FEATURE TO 112.8" A.F.F.
5. PR. ANODIZED ALUMINUM STOREFRONT DOORS IN LOBBY CONTAINER
6. TEMPERED GLAZING PANEL IN ANODIZED ALUMINUM STOREFRONT FRAMING, TYP.
7. STEEL FRAMED LOBBY ENTRY CANOPY WITH PERFORATED METAL PANELING INFILL, TYP.
8. PAIRED OFFICE SPACE CONTAINERS ON SLAB ON GRADE, TYP.
9. RESTROOM SPACE CONTAINER ON SLAB ON GRADE
10. FIRE RETARDANT, U.V. RESISTANT P.V.C. CANOPY OVER GALVANIZED STEEL FRAME, TYP.
11. HORIZONTALLY MOUNTED PERFORATED METAL PANELING INFILL AT CANOPY, TYP.
12. PAIRED WORKSHOP / STORAGE CONTAINERS ON SLAB ON GRADE, TYP.
13. STEEL FRAMED GATE WITH METAL PANELING INFILL, TYP.
14. LOBBY SPACE CONTAINER BEYOND
15. EXTERIOR SIGNAGE UNDER SEPARATE PERMIT REVIEW AND APPROVAL
16. ADDRESS NUMERALS IN CONTRASTING COLOR PER CITY OF MESA SPECIFICATIONS
17. FIRE DEPARTMENT KEY BOX (KNOX BOX) PER CITY OF MESA FIRE DEPARTMENT SPECIFICATIONS
18. FIRE DEPARTMENT CONNECTION (F.D.C.) PER CITY OF MESA FIRE DEPARTMENT SPECIFICATIONS
19. STEEL FRAMED TRELLIS WITH VERTICALLY MOUNTED PERFORATED METAL PANELING INFILL, TYP.
20. - NOT USED -
21. EXTERIOR WALL MOUNTED H.V.A.C. EQUIPMENT AND ELECTRICAL PANELS BY CONTAINER SUPPLIER, TYP.

- |   |  |
|---|--|
| [P1] DUNN EDWARDS<br>8763M PEWTER WORKS (COLOR MATCH FRAZEE)<br>SPRAY APPLIED BODY PAINT  | [ST1] CORONADO STONE<br>ROCKY MOUNTAIN LEDGE - MEADOW SPRINGS                                      |
| [P2] DUNN EDWARDS<br>8685D WOODLET (COLOR MATCH FRAZEE)<br>SPRAY APPLIED ACCENT PAINT     | [M1] PAC-CLAD<br>CORRUGATED, PERFORATED METAL PANEL<br>W/ 3/8" DIA. ROUND PERFORATIONS - GALVALUME |
| [P3] DUNN EDWARDS<br>SP2920 AZTEC PONY (COLOR MATCH FRAZEE)<br>SPRAY APPLIED ACCENT PAINT | [M2] VERTICALLY MOUNTED STANDARD METAL DECKING   |
| [P4] DUNN EDWARDS<br>SUPERLITE BLOCK - BONE<br>SPRAY APPLIED STAIN TO MATCH               | [C1] CONTAINER CANOPIES<br>WHITE FIRE / U.V. RESISTANT PVC<br>GALVANIZED STEEL FRAME               |
| [P5] DUNN EDWARDS<br>SUPERLITE BLOCK - TIERRA BROWN<br>SPRAY APPLIED STAIN TO MATCH       |  |

KEYNOTES

LEGEND



ARCHICON

Architecture & Interiors, L.C.

5055 E WASHINGTON STREET  
SUITE 200  
PHOENIX, ARIZONA 85034  
(602) 222-4266  
FAX (602) 279-4305  
www.ARCHICON.COM

T.W.C. PROPERTIES  
6447 SOUTH MOUNTAIN ROAD  
MESA, ARIZONA 85212

JOB NO: 2186820-01

PROJECT MGR: GWJ

DRAWN BY: GWJ

CHECKED BY: GWJ

DATE: \_\_\_\_\_

NO. \_\_\_\_\_

DATE: \_\_\_\_\_

DATE: \_\_\_\_\_

DATE: \_\_\_\_\_

DATE: \_\_\_\_\_

DATE: \_\_\_\_\_

DATE: \_\_\_\_\_

DATE: \_\_\_\_\_

DATE: \_\_\_\_\_

DATE: \_\_\_\_\_

DATE: \_\_\_\_\_

DATE: \_\_\_\_\_

DATE: \_\_\_\_\_

DATE: \_\_\_\_\_

DATE: \_\_\_\_\_

DATE: \_\_\_\_\_

DATE: \_\_\_\_\_

DATE: \_\_\_\_\_

DATE: \_\_\_\_\_

DATE: \_\_\_\_\_

DATE: \_\_\_\_\_

DATE: \_\_\_\_\_

DATE: \_\_\_\_\_

DATE: \_\_\_\_\_

DATE: \_\_\_\_\_

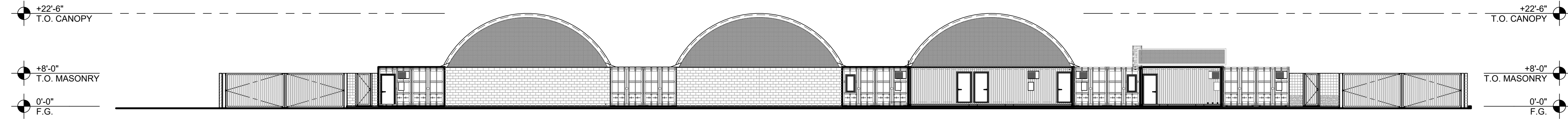
DATE: \_\_\_\_\_

DATE: \_\_\_\_\_

DATE: \_\_\_\_\_

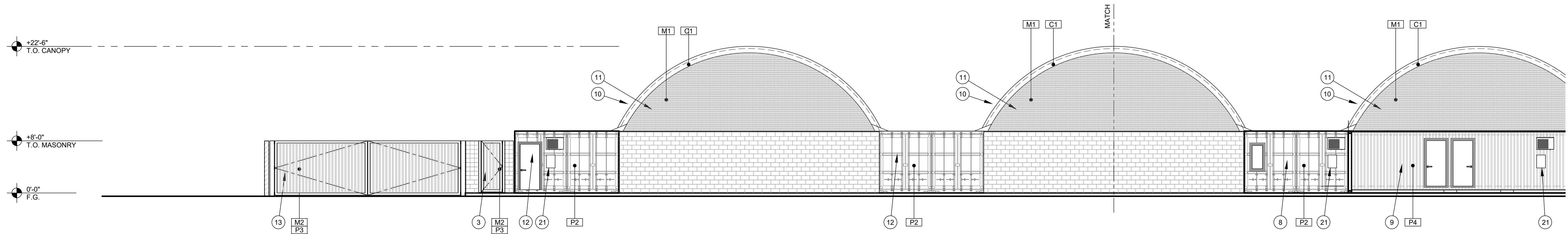
DATE: \_\_\_\_\_

DATE: \_\_\_\_\_



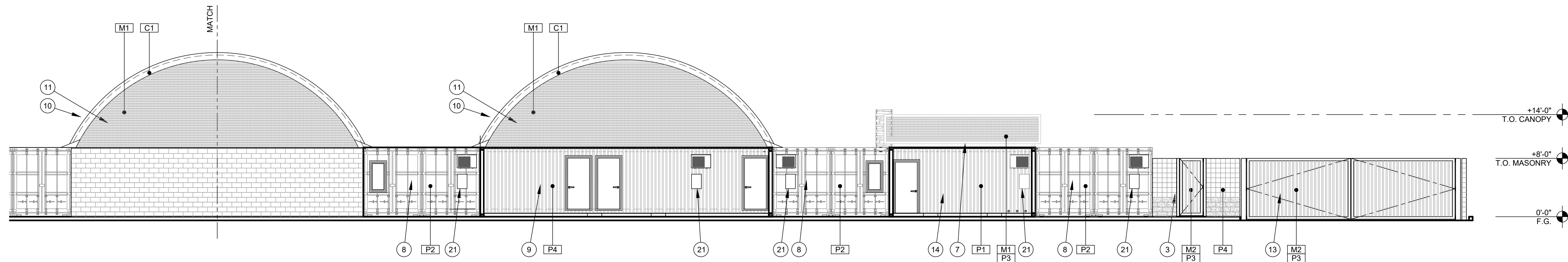
1 EXTERIOR ELEVATION - EAST

SCALE: 1/8" = 1'-0"



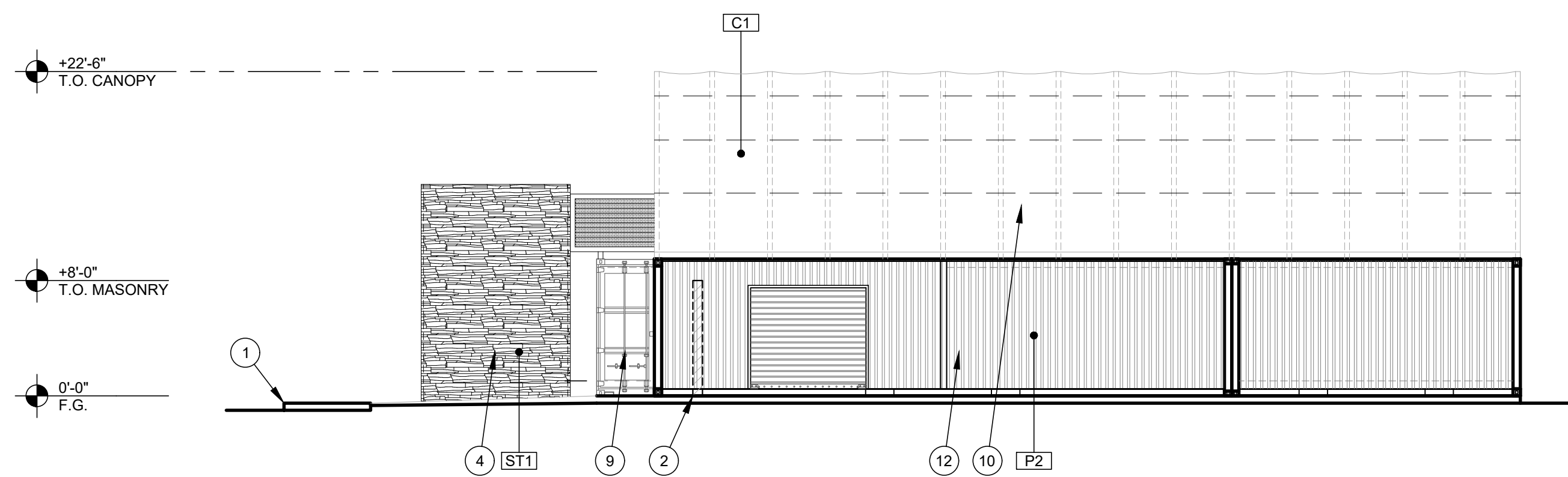
2 EXTERIOR ELEVATION - EAST

SCALE: 1/8" = 1'-0"



3 EXTERIOR ELEVATION - EAST

SCALE: 1/8" = 1'-0"



5 EXTERIOR ELEVATION - SOUTH

SCALE: 1/8" = 1'-0"

1. CONCRETE SIDEWALK ON GRADE, TYP.
2. 8' X 8' X 16" CENTER SCORED CONCRETE MASONRY UNIT (C.M.U.) OVER 32" HIGH 8' X 8' X 16" SPLIT FACED CONCRETE MASONRY UNIT WAINSCOT SITE WALL, TYP.
3. 4'-0" WIDE STEEL FRAMED GATE WITH METAL PANELING INFILL, TYP.
4. CULTURED STONE VENEER OVER 8' X 8' X 16" CONCRETE MASONRY UNIT (C.M.U.) ENTRY FEATURE TO 12'-8" A.F.
5. PR. ANODIZED ALUMINUM STOREFRONT DOORS IN LOBBY CONTAINER
6. TEMPERED GLAZING PANEL IN ANODIZED ALUMINUM STOREFRONT FRAMING, TYP.
7. STEEL FRAMED LOBBY ENTRY CANOPY WITH PERFORATED METAL PANELING INFILL, TYP.
8. PAIRED OFFICE SPACE CONTAINERS ON SLAB ON GRADE, TYP.
9. RESTROOM SPACE CONTAINER ON SLAB ON GRADE
10. FIRE RETARDANT, U.V. RESISTANT P.V.C. CANOPY OVER GALVANIZED STEEL FRAME, TYP.
11. HORIZONTALLY MOUNTED PERFORATED METAL PANELING INFILL AT CANOPY, TYP.
12. PAIRED WORKSHOP / STORAGE CONTAINERS ON SLAB ON GRADE, TYP.
13. STEEL FRAMED GATE WITH METAL PANELING INFILL, TYP.
14. LOBBY SPACE CONTAINER BEYOND
15. EXTERIOR SIGNAGE UNDER SEPARATE PERMIT REVIEW AND APPROVAL
16. ADDRESS NUMERALS IN CONTRASTING COLOR PER CITY OF MESA SPECIFICATIONS
17. FIRE DEPARTMENT KEY BOX (KNOX BOX) PER CITY OF MESA FIRE DEPARTMENT SPECIFICATIONS
18. FIRE DEPARTMENT CONNECTION (F.D.C.) PER CITY OF MESA FIRE DEPARTMENT SPECIFICATIONS
19. STEEL FRAMED TRELIS WITH VERTICALLY MOUNTED PERFORATED METAL PANELING INFILL, TYP.
20. - NOT USED -
21. EXTERIOR WALL MOUNTED H.V.A.C. EQUIPMENT AND ELECTRICAL PANELS BY CONTAINER SUPPLIER, TYP.

- [P1] DUNN EDWARDS  
8763M PEWTER WORKS (COLOR MATCH FRAZEE)  
SPRAY APPLIED BODY PAINT
- [P2] DUNN EDWARDS  
8685D WOODLET (COLOR MATCH FRAZEE)  
SPRAY APPLIED ACCENT PAINT
- [P3] DUNN EDWARDS  
SP2920 AZTEC PONY (COLOR MATCH FRAZEE)  
SPRAY APPLIED ACCENT PAINT
- [P4] DUNN EDWARDS  
SUPERLITE BLOCK - BONE  
SPRAY APPLIED STAIN TO MATCH
- [P5] DUNN EDWARDS  
SUPERLITE BLOCK - TIERRA BROWN  
SPRAY APPLIED STAIN TO MATCH

- [ST1] CORONADO STONE  
ROCKY MOUNTAIN LEDGE - MEADOW SPRINGS
- [M1] PAC-CLAD  
CORRUGATED, PERFORATED METAL PANEL  
W/ 3/8" DIA. ROUND PERFORATIONS - GALVALUME
- [M2] VERTICALLY MOUNTED STANDARD METAL DECKING
- [C1] CONTAINER CANOPIES  
WHITE FIRE / U.V. RESISTANT PVC  
GALVANIZED STEEL FRAME

KEYNOTES

LEGEND

A302

ISSUE DATE: 2021.12.21



TWC  
contracting

the  
Wall  
company

1047

1011

Wall co