

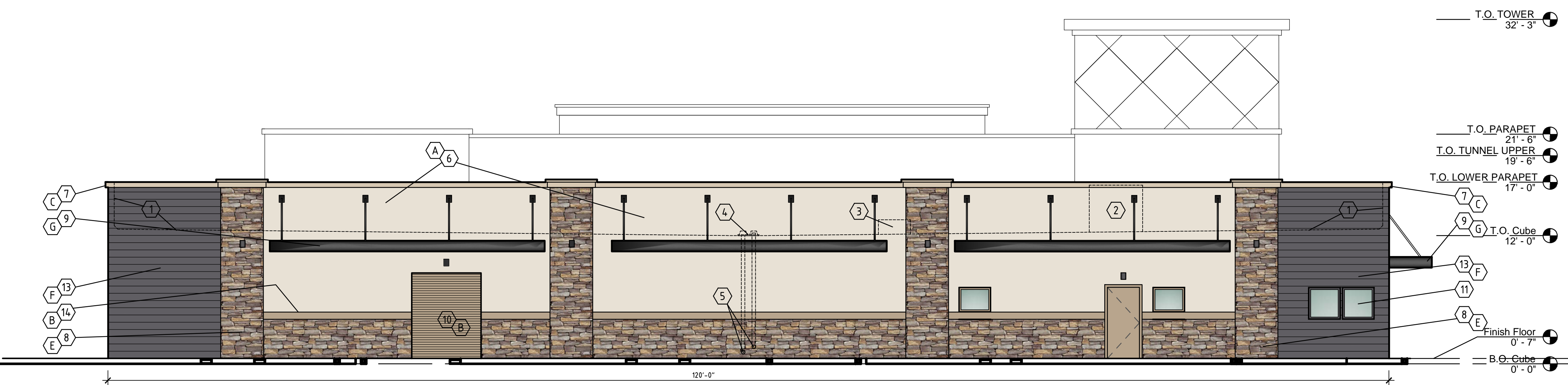
**A** EXTERIOR ELEVATION - SIDE - NORTHEAST  
3/16 = 1' - 0"



**B** EXTERIOR ELEVATION - FRONT - SOUTHEAST  
3/16 = 1' - 0"



**D** EXTERIOR ELEVATION - REAR - NORTHWEST  
3/16 = 1' - 0"



**C** EXTERIOR ELEVATION - SIDE - SOUTHWEST  
3/16 = 1' - 0"

- KEYNOTES**
- ROOF AND PARAPET PROFILE BEYOND PARAPET.
  - ROOF MOUNTED HVAC UNIT BEYOND PARAPET SHALL NOT EXCEED THE TOP HORIZONTAL LINE OF THE PARAPET, SEE B/4/01.
  - ROOF MOUNTED ROOF HATCH BEYOND PARAPET SHALL NOT EXCEED THE TOP HORIZONTAL LINE OF THE PARAPET, SEE B/4/01.
  - ROOF DRAIN AND OVERFLOW DRAIN (2" ABOVE THE ROOF DRAIN) BEYOND THE PARAPET.
  - ROOF DRAIN AND OVERFLOW DRAIN PIPING SHALL BE INSIDE THE EQUIPMENT ROOM, NOT SEEN FROM THE EXTERIOR. THE DRAIN PIPE SHALL EXIT THE BUILDING WALL AT 6" ABOVE THE FINISHED FLOOR AND THE OVERFLOW PIPE SHALL EXIT THE BUILDING WALL AT 12" ABOVE THE FINISHED FLOOR.
  - WALL STUCCO FINISH (EFIS) SHALL BE SAND TEXTURE WITH COLOR INDICATED PER MATERIAL LEGEND.
  - PARAPET DETAIL STUCCO FINISH (EFIS) SHALL BE SAND TEXTURE WITH COLOR INDICATED PER MATERIAL LEGEND.
  - WAINSCOT OR PIER FAUX STONE VENEER AS INDICATED BY MATERIAL LEGEND.
  - STEEL CANOPY FINISH AS INDICATED BY MATERIAL LEGEND.
  - DOOR AND FRAME FINISH AS INDICATED BY MATERIAL LEGEND.
  - WINDOW FRAME FINISH AS INDICATED BY MATERIAL LEGEND.
  - WALL STUCCO FINISH (EFIS) WITH DIAMOND SCORE PATTERN SHALL BE SAND TEXTURE WITH COLOR INDICATED PER MATERIAL LEGEND.
  - PRE-FINISHED METAL HORIZONTAL SHIP LAP SIDING.
  - WAINSCOT CAP DETAIL, EFIS.
  - BUILDING ADDRESS SHALL BE PROVIDED ON THE BUILDING PER MESA AMENDED FIRE CODE SECTION 505.1. THE NUMBERS SHALL BE ARABIC AND A MINIMUM OF 12-INCHES HIGH WITH A MINIMUM STROKE WIDTH OF 2-INCHES. LETTER COLOR SHALL BE OF CONTRASTING COLOR TO THE BUILDING WALL COLOR OF WHICH IT IS MOUNTED. LOCATION SHALL BE APPROVED BY THE FIRE DEPARTMENT.

NOTE: SCREENING OF ROOF MOUNTED EQUIPMENT  
ROOF MOUNTED EQUIPMENT IS LOCATED AT THE ROOF OF THE OFFICE AND EQUIPMENT ROOM.  
THIS EQUIPMENT IS SCREENED BY PARAPETS AT THREE SIDES AND THE BUILDING STRUCTURE ON THE FORTH SIDE.  
NOTE: FINISHES FOR SITE STRUCTURES  
SEE SHEET 202 FOR SITE STRUCTURES AS THEY ARE MARKED WITH COLOR CODES FROM THE MATERIAL LEGEND.

END

NORTHEAST ELEVATION	
TOTAL ELEVATION AREA	2757.00
DOORS, WINDOWS, SHADES	271.54 10%
STONE VENEER	631.05 23%
HORIZONTAL SIDING	729.80 26%
EFIS SAND TEXTURE	1124.61 41%
	100%
SOUTHEAST ELEVATION	
TOTAL ELEVATION AREA	1018.87
DOORS, WINDOWS, SHADES	239.88 24%
STONE VENEER	119.89 12%
HORIZONTAL SIDING	153.01 15%
EFIS SAND TEXTURE	506.09 50%
	100%
SOUTHWEST ELEVATION	
TOTAL ELEVATION AREA	1986.22
DOORS, WINDOWS, SHADES	185.24 9%
STONE VENEER	516.89 26%
HORIZONTAL SIDING	316.95 16%
EFIS SAND TEXTURE	967.14 49%
	100%
NORTHWEST ELEVATION	
TOTAL ELEVATION AREA	768.82
DOORS, WINDOWS, SHADES	233.15 30%
STONE VENEER	76.82 10%
HORIZONTAL SIDING	208.02 27%
EFIS SAND TEXTURE	250.83 33%
	100%

**MATERIAL LEGEND**

(A)	MAIN BLDG. EFIS SHERWIN-WILLIAMS: SW0053 PORCELAIN
(B)	WAINSCOT CAP EFIS/DOORS SHERWIN-WILLIAMS: SW7534 OUTERBANKS
(C)	TRIM/ACCENT EFIS SHERWIN-WILLIAMS: SW7529 SAND BEACH
(D)	DIAMOND PATTERN/ACCENT SHERWIN-WILLIAMS: SW6479 DRIZZLE
(E)	STONE ACCENT (MATCH SHOPPING CENTER) SHOWEN EL DORADO STONE RUSTIC LEDGE - CLEARWATER
(F)	HORIZONTAL SHIPLAP SHERWIN-WILLIAMS: SW6278 CLOAK GRAY
(G)	ALL METAL: AWNINGS, TIE BACKS, WINDOW FRAMES BLACK

REVISIONS

RELEASE DATE  
8-1-2023

JMD JMD JMD

PROJECT ARCHITECT  
DRAFTSPERSON  
CHECKER  
CONSULTANT

EXPIRES 9-30-2023

REGISTERED ARCHITECT  
JAMES M. DAY  
23474  
AZ  
8-1-2023

EMAIL: JDAY@JMDARCHITECTS.COM  
PHONE: 602.271.7705  
FAX: 602.271.7707  
8194 WEST DEER VALLEY ROAD  
SUITE 106-321  
PEORIA, AZ 85382

architecture  
james m day & associates, llc

Rinse n Ride  
EST. 1987

PROJECT - COMMERCIAL - PRS22-01043  
RINSE N RIDE  
4450 E BROWN ROAD  
MESA, AZ 85205

CONTRACT NO.  
202213

SHEET NO.  
431

OF 1 SHEETS