

GRADING CONSTRUCTION NOTES

- 1 CONSTRUCT ASPHALT PAVEMENT
- 2 CONSTRUCT 6" SINGLE CURB PER M.A.G. STD. DTL. 222. TYPE 'A'.
- 3 CONSTRUCT ROLL CURB PER M.A.G. STD. DTL. 220-1 TYPE 'C'.
- 4 CONSTRUCT 6" VERTICAL CURB AND GUTTER PER M.A.G. STD. DTL. 220-1, TYPE 'A'.
- 5 TRANSITION FROM VERTICAL CURB TO ROLL CURB PER M.A.G. STD. DTL. 221.
- 6 CONSTRUCT DRIVEWAY ENTRANCE PER C.O.M. STD. DTL. M-42.
- 7 CONSTRUCT 5' SIDEWALK PER M.A.G. STD. DTL. 230.
- 8 CONSTRUCT DUMPSTER ENCLOSURE PER ARCHITECTURAL PLANS.
- 9 CATCH BASIN TYPE 'D' PER M.A.G. STD. DTL. 533-1.
- 10 10' UNDERGROUND RETENTION.
- 11 INSTALL 18" HDPE STORM DRAIN PIPE.
- 12 CONSTRUCT DECOMPOSED GRANITE EMERGENCY ROAD.
- 13 CONSTRUCT 4' SIDEWALK PER M.A.G. STD. DTL. 230.

RETENTION CALCULATION

$V_R = A \cdot C \cdot (D/12)$
 $A = 2.50 \text{ ACRES}$
 $C = 0.84$
 $D = 2.16'$
 $V_R = 2.50 \text{ ACRES} \cdot 0.84 \cdot (2.16/12) = 43560$
 $V_R = 18,136 \text{ CF}$
 $V_R = 18,143 \text{ CF}$

REVISIONS:

PRELIMINARY GRADING & DRAINAGE PLAN

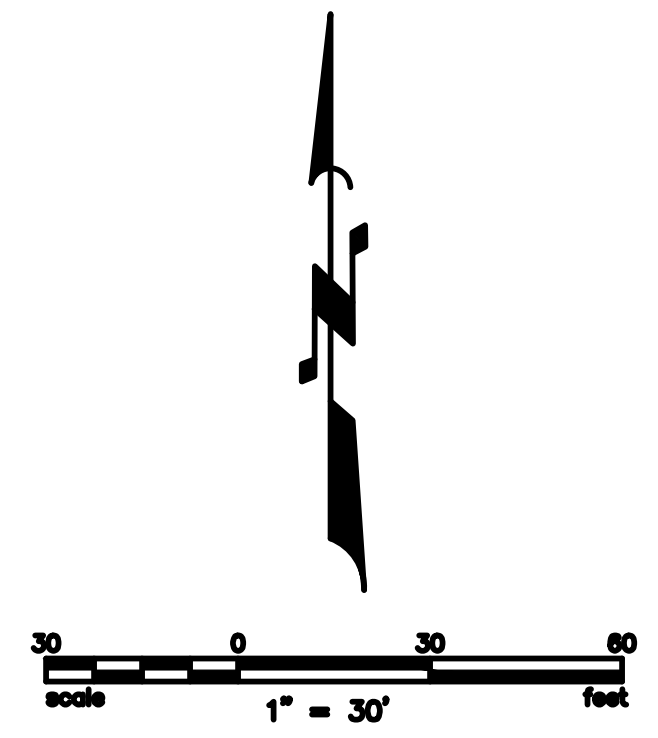
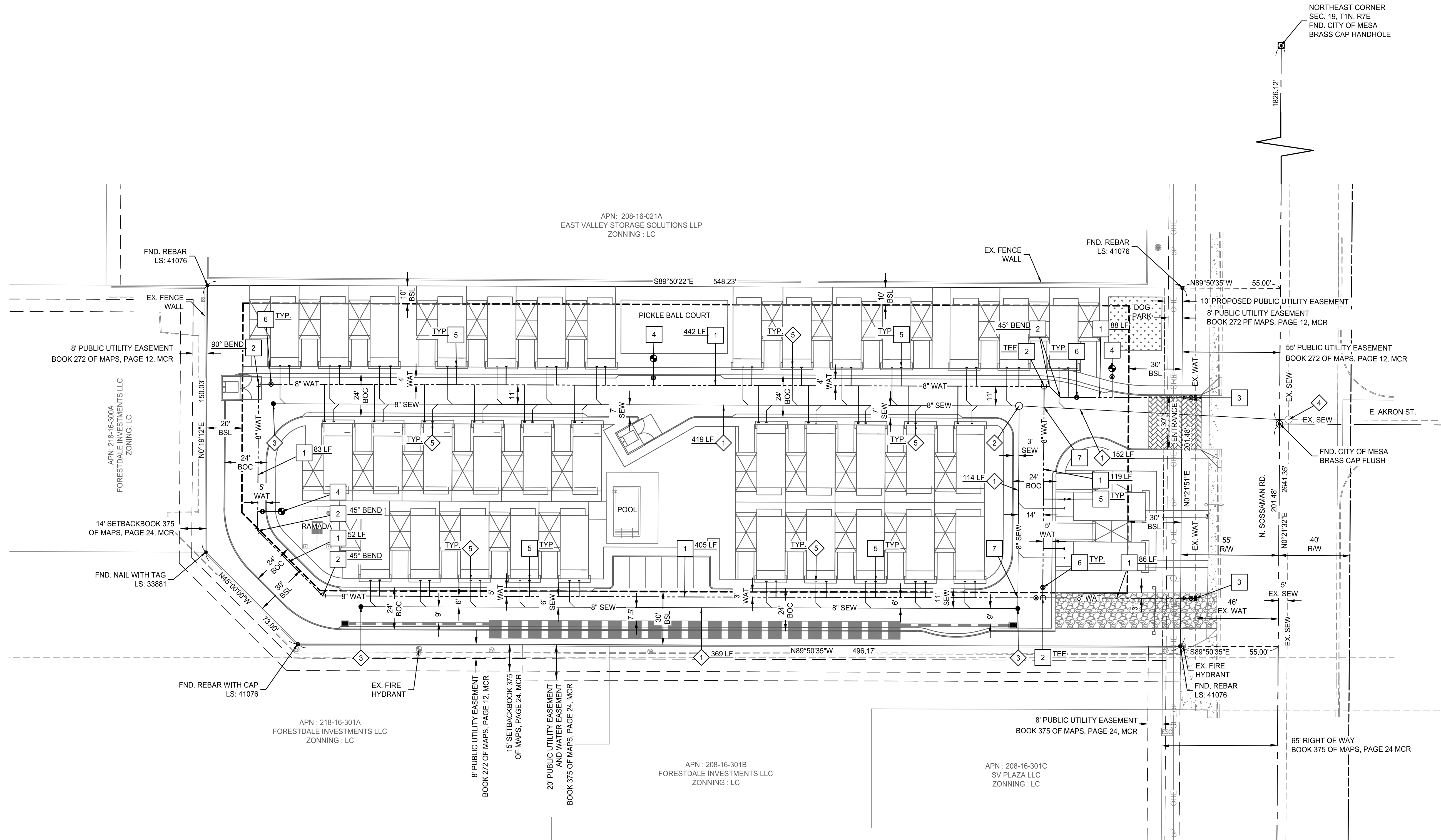
PROJECT: SOSSAMAN TOWNHOMES
 148 NORTH SOSSAMAN ROAD, MESA, AZ 85027

Job No. 202110270
 Drawn by JCK
 Checked by JCK

REGISTERED PROFESSIONAL ENGINEER
 48535
 DAVID M. BOHN
 LICENSED 02-23-2008
 ARIZONA U.S.A.

JOB NO. 202110270
 PRELIMINARY GRADING & DRAINAGE PLAN
 SHEET NO. 4
 4 OF 4

C:\Users\jdoivda\OneDrive\Documents\SOSSAMAN TOWNHOMES\DWG\CIVIL\PRELIMINARY\PRELIMINARY SITE PLAN_2023-12-10\202110270_PUP.dwg, 02/21/2024 12:56:11 PM



WATER NOTES

- 1 INSTALL 8" DIP CLASS 350 WATER LINE WITH 3' OF COVER.
- 2 INSTALL CROSS, BEND OR TEE, RESTRAIN JOINTS PER M.A.G. STD. DT. 302-1, 302-2, 303-1, 303-2.
- 3 INSTALL 12" x 8" TAPPING SLEEVE, VALVE BOX & COVER PER M.A.G. STD. DTL. 340, 391-1 (TYPE A) 391-2 AND 392 (TYPE A). RESTRAIN WITH THRUST BLOCK PER M.A.G. STD. DTL. 380.
- 4 INSTALL FIRE HYDRANT PAINTED RED SAFETY PER M.A.G. STD. DTL. 360-3. ALL HYDRANTS SHALL HAVE A MARKER PER M.A.G. STD. DTL. 122.
- 5 INSTALL 1" DOMESTIC WATER SERVICE. SEE PLUMBING PLAN FOR CONTINUATION.
- 6 INSTALL 8" GATE VALVE AND BOX PER M.A.G. STD. DTL. 391-1 (TYPE A), 391-2 AND 392 (TYPE A)
- 7 COMPLIANCE OF M.A.G. STD. DTL. 404 AND 610 AT WATER AND SEWER CROSSING IS REQUIRED. EXTRA PROTECTION (EPR) PER M.A.G. STD. DTL. 404-3 WHEN NEEDED. RESTRAIN JOINTS ON DIP WATER PER M.A.G. STD. DTL. 303.

SEWER NOTES

- 1 INSTALL 8" VCP SEWER LINE. LENGTH PER PLAN.
- 2 INSTALL 4" DIAMETER CONCRETE MANHOLE PER M.A.G. STD. DTL. 420-1.
- 3 INSTALL CLEANOUT.
- 4 LOCATE AND CONNECT TO EXISTING SEWER SERVICE WITH PROPOSED MANHOLE WITH NECESSARY AND APPROPRIATE FITTINGS.
- 5 INSTALL 6" PVC SEWER SERVICE PER M.A.G. STD. DTL. 440 AND C.O.M. STD. DTL. M-24. SEE PLUMBING PLANS FOR CONTINUATION.

REVISIONS:

PRELIMINARY UTILITY PLAN
SOSSAMAN TOWNHOMES
 148 NORTH SOSSAMAN ROAD, MESA, AZ 85027

Job No: 202110270
 Drawn By: JDM
 Checked: JDM



DAVID M. BOHN
 REGISTERED PROFESSIONAL ENGINEER
 STATE OF ARIZONA
 LICENSE NO. 48533
 EXPIRES 02-28-2026

JOB NO.
 202110270
 PRELIM UTILITY PLAN
 SHEET NO.
3
 3 OF 4