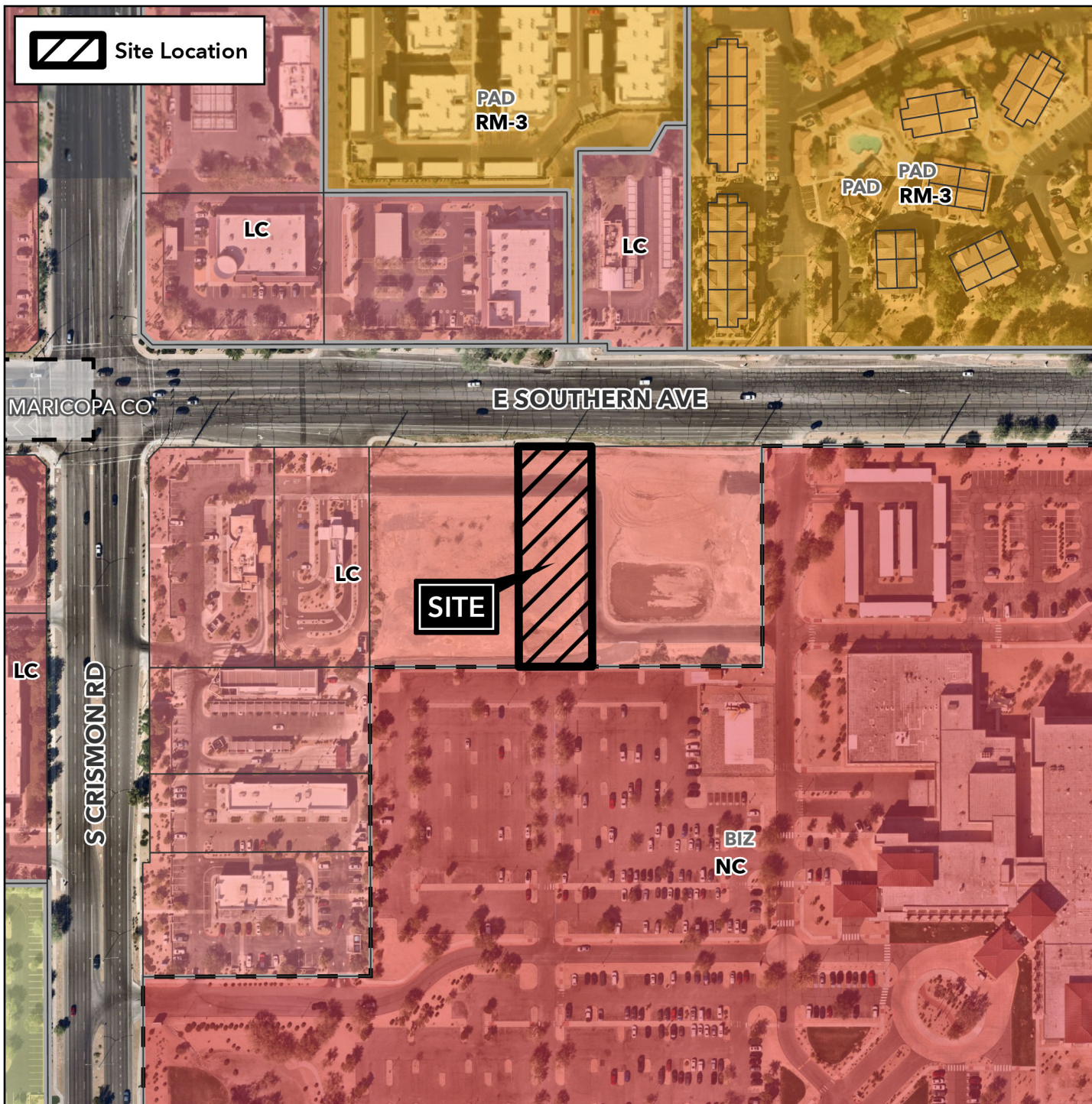


Design Review Vicinity Map: DRB25-00379

Case Details



Site Location



Case:

DRB25-00379

Site / Address:

(District 5) 0.69± acres located approximately 500 feet east of the southeast corner of South Crismon Road and East Southern Avenue.

Request:

Design Review for an approximately 1,692 sq.ft. Restaurant with Drive-thru Facilities.

