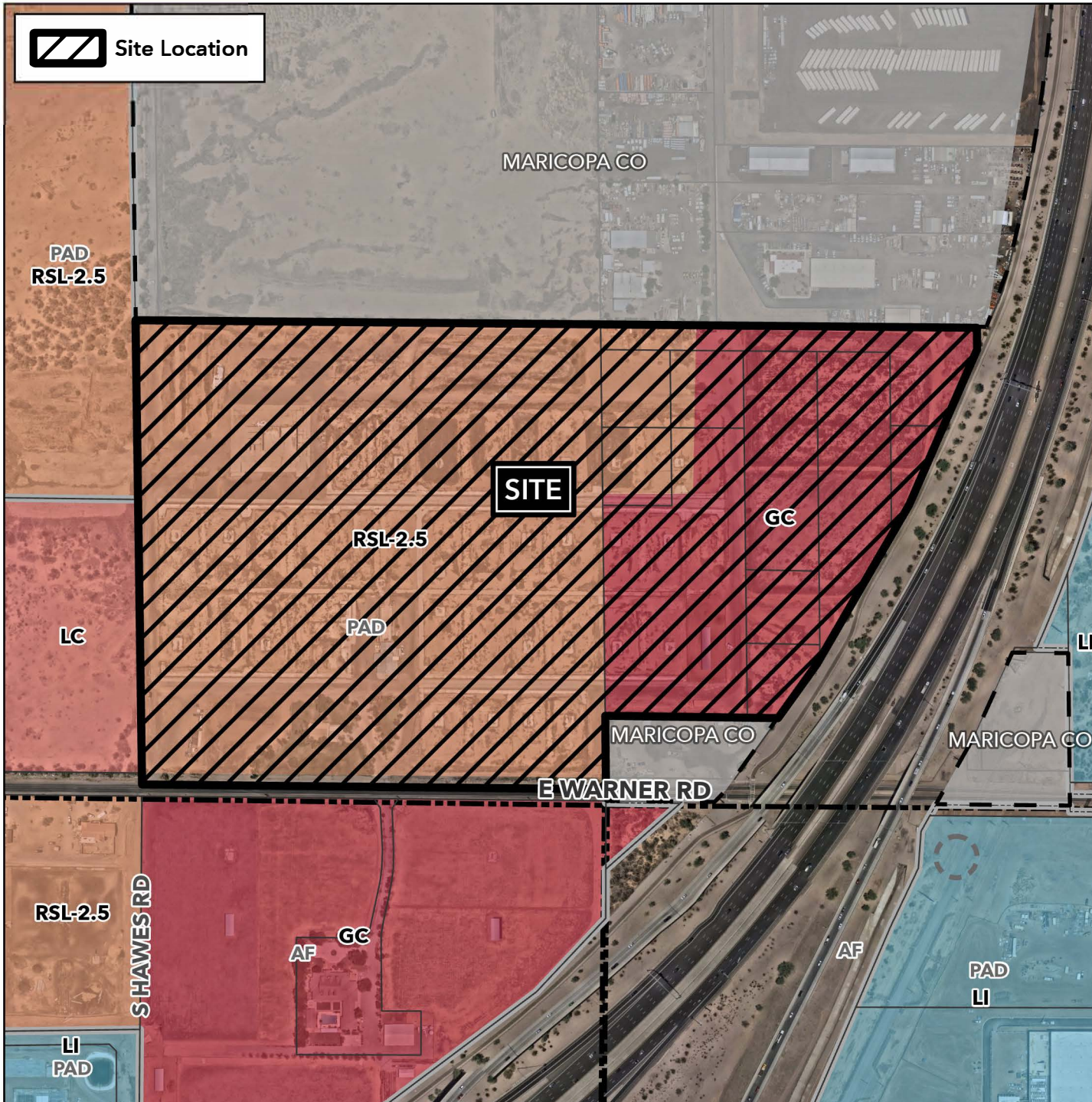


Planning and Zoning Vicinity Map: ZON24-00892

Case Details



Site Location



Case:

ZON24-00892

Site / Address:

(District 6). 60.8± acres located at the northeast corner of East Warner Road and South Hawes Road.

Request:

Rezone 18± acres from Small Lot Residence-2.5 with a Planned Area Development Overlay (RSL-2.5-PAD) to General Commercial with a Planned Area Development Overlay (GC-PAD), Rezone 18± acres from GC-PAD to RSL-2.5-PAD, Rezone to establish a second PAD Overlay on the entire 60.8± acres, Council Use Permit, and Specific Plan approval for a 343-lot single residence development and future commercial development.

