



Design Review Board



DRB22-01273

Aldi's



Request

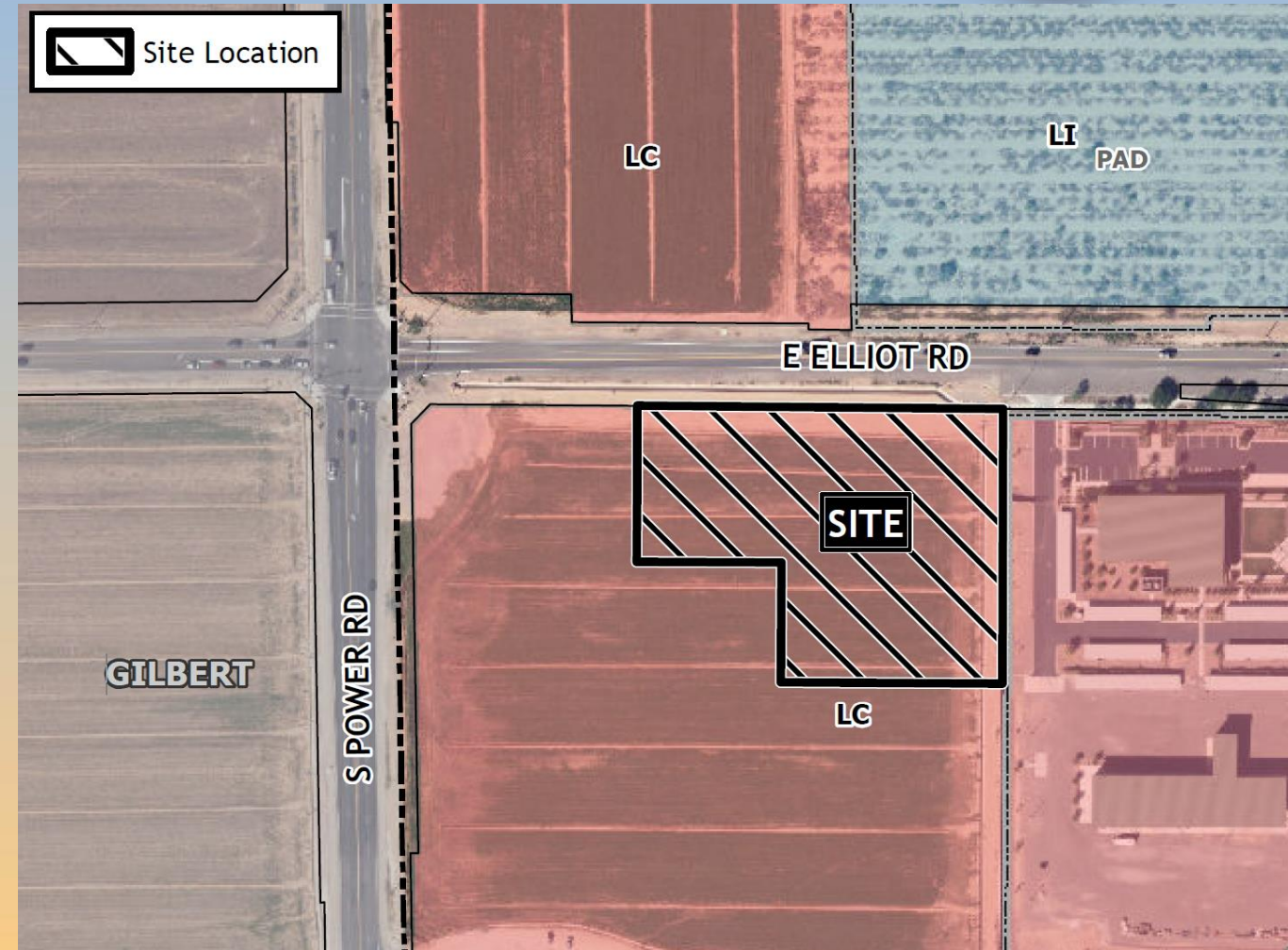
- Design Review
- To allow for a grocery store





Location

- South of Elliot Road
- West of Power Road





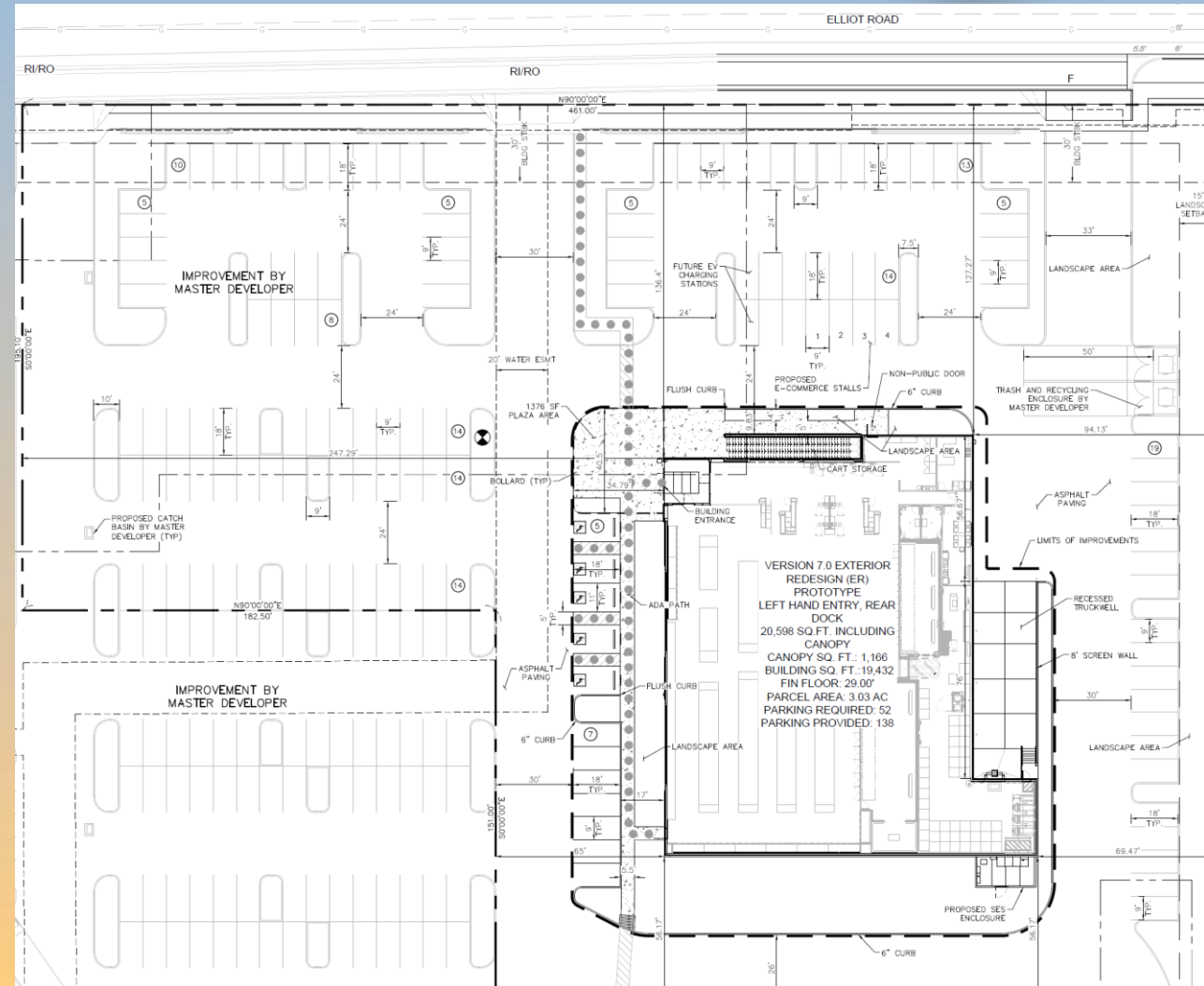
Site Photos



Looking south towards the site



- 20,598 sq. ft. grocery store
- Within proposed Large Commercial Development
- Access from shared drive aisle from Elliot Road & Power Road







Landscape Plan

PLANTING LEGEND


TREES

	BOTANICAL NAME / COMMON NAME	SIZE	QTY
	Chitalpa tashkentensis 'Pink Dawn' Pink Dawn Chitalpa	2" Cal. Min., 9' Ht. Min., 6' Sp. Min., 36" Box Min.	3
	Pistacia x 'Red Push' Red Push Pistache	2" Cal. Min., 9' Ht. Min., 4' Sp. Min., 36" Box Min.	7


SHRUBS

	BOTANICAL NAME / COMMON NAME	SIZE	QTY
	Carissa macrocarpa 'Boxwood Beauty' Natal Plum	5 Gal.	33
	Dodonaea viscosa 'Green' Green Hopseed Bush	5 Gal.	18
	Ruellia peninsularis Baja Ruellia	5 Gal.	67
	Russelia equisetiformis Coral Fountain Bush	5 Gal.	13


ACCENTS & GRASSES

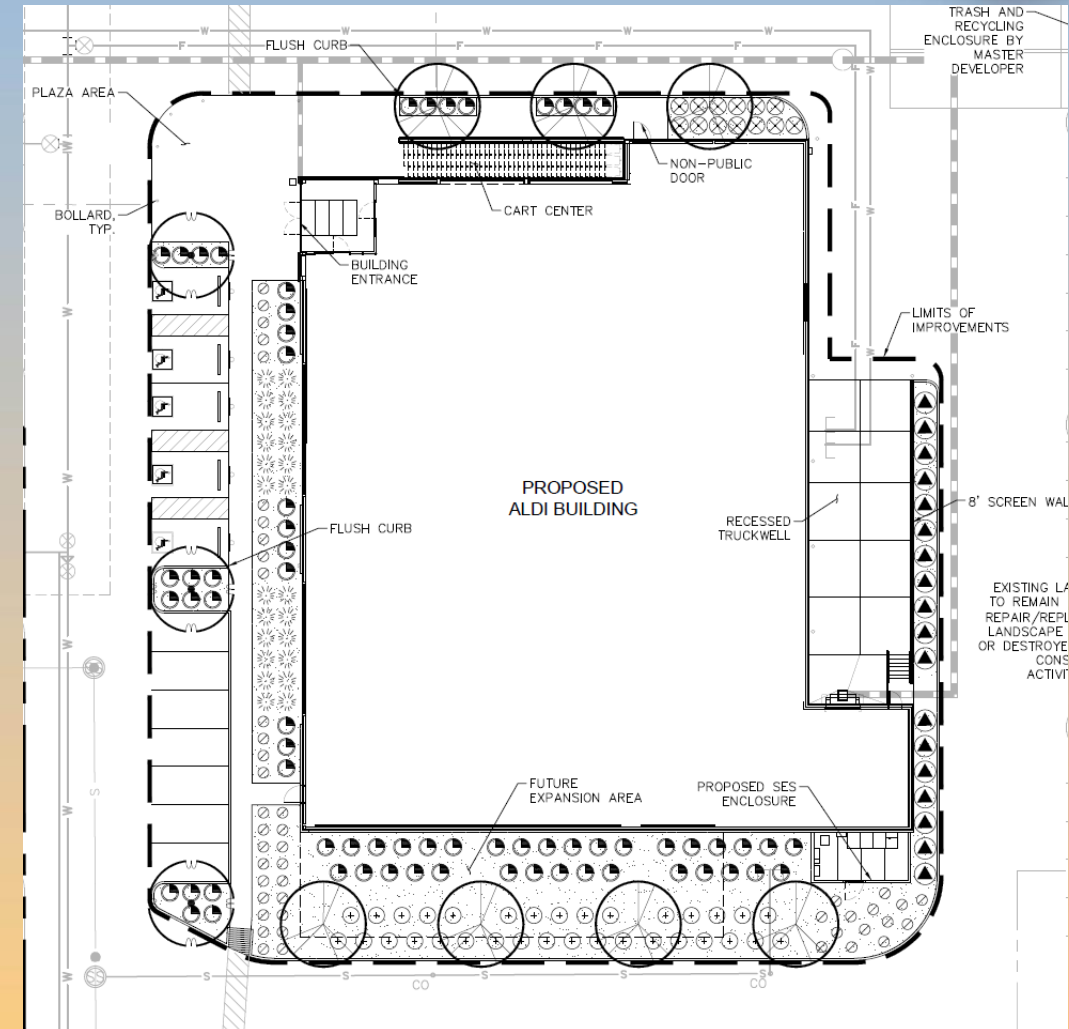
	BOTANICAL NAME / COMMON NAME	SIZE	QTY
	Muhlenbergia capillaris 'Regal Mist' Regal Mist Muhly	5 Gal.	24

GROUNDCOVERS

	BOTANICAL NAME / COMMON NAME	SIZE	QTY
	Lantana camara 'New Gold' New Gold Lantana	1 Gal.	46

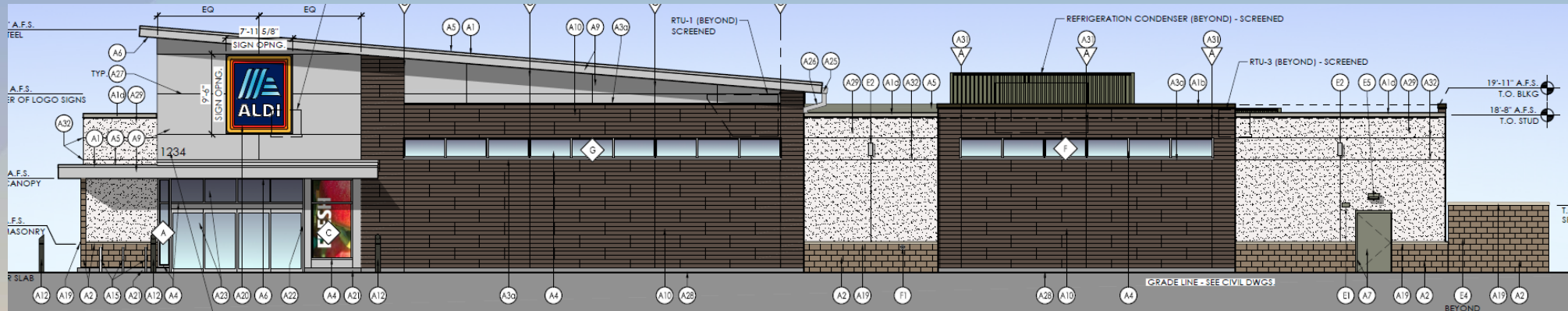
MATERIALS

	DESCRIPTION	QTY
	Decomposed Granite Size and Color to Match Existing, 2" Depth Min.	7,295 SF

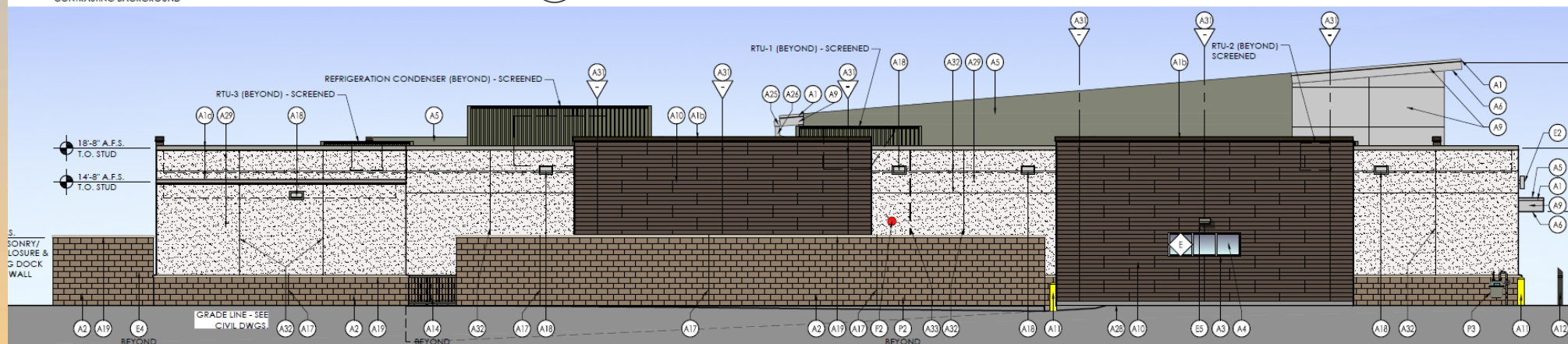




Elevations



4 Front Elevation (West)
SCALE: 1/8" = 1'-0"



3 Rear Elevation (East)
SCALE: 1/8" = 1'-0"





Renderings





Renderings





Material Board



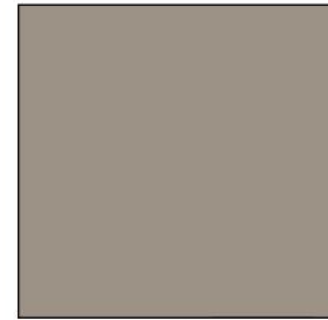
A2

SPEC-BRICK CONCRETE MASONRY
VENEER
"GARDNER BLEND"



A4

KAWNEER NORTH AMERICA
ALUMINUM STOREFRONT
"CLEAR ANODIZED FINISH"



A7

SHERWIN WILLIAMS PAINT
#7405
"KEYSTONE GRAY"



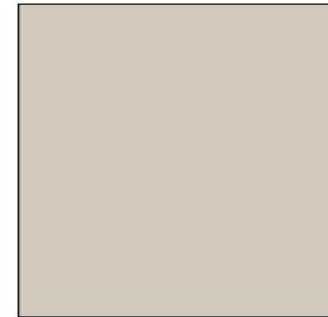
A9

OMEGA-LITE BY LAMINATORS INC.
ALUMINUM-FACED COMPOSITE WALL PANELS
"BRIGHT SILVER"



A10

NICHIA FIBER CEMENT
EXTERIOR CLADDING
VINTAGEWOOD "BARK"



A29

DRYVIT SYSTEMS, INC.
COLOR TO MATCH
#104 DOVER SKY



Findings

Staff is seeking your review and recommendation on the following:

- ✓ Proposed building elevations and landscape design
- ✓ Alternative compliance requests

Staff welcomes any feedback



Design Review Board



Alternative Compliance

- ✓ Facades shall incorporate at least 3 different and distinct materials and no more than 50% of each façade shall be covered in one material