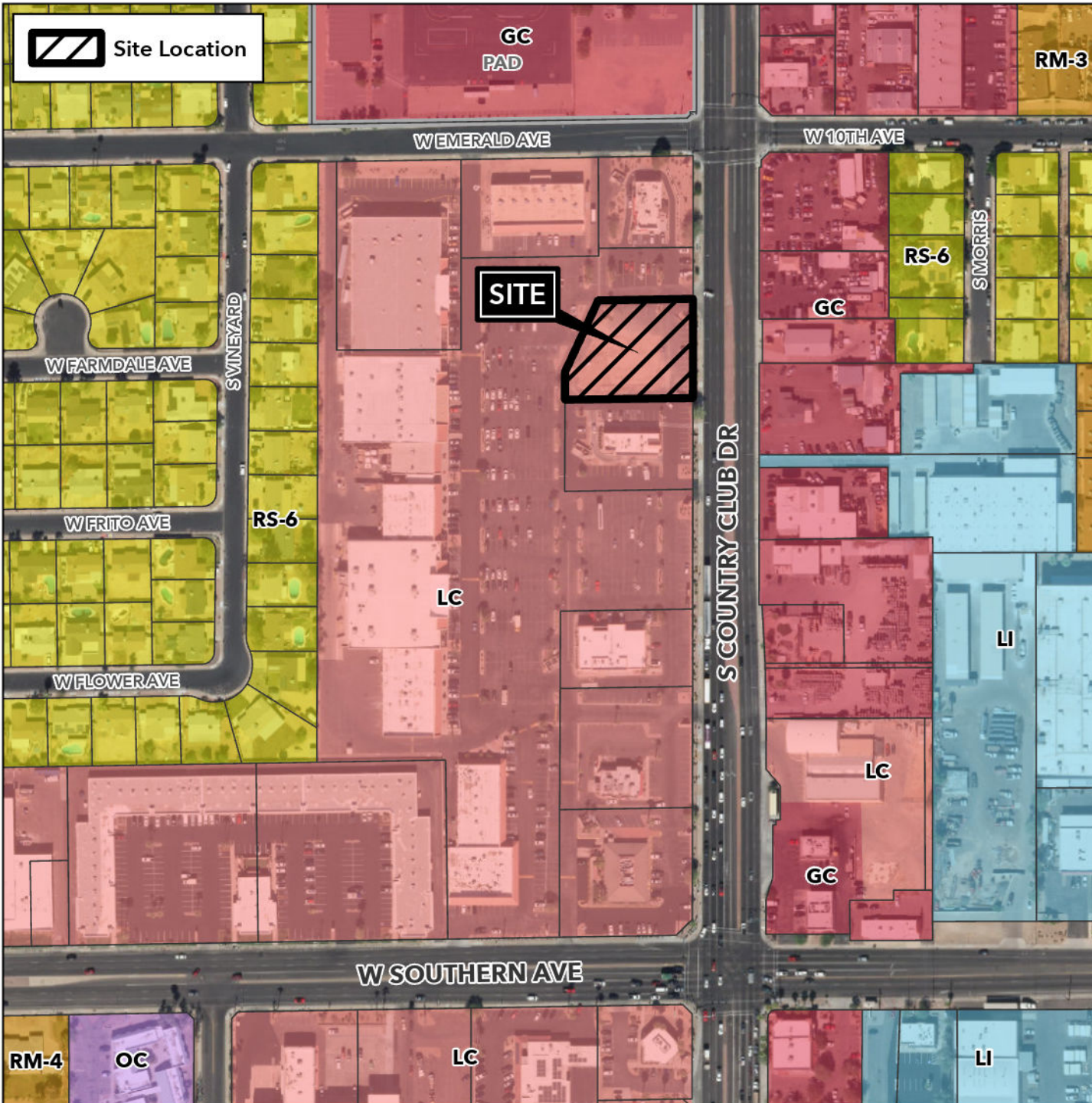


# Board of Adjustment Vicinity Map: BOA24-00747

# Case Details



## Case:

BOA24-00747

## Site / Address:

0.7+ acres, located approximately 800 feet north of the northwest corner of Country Club Drive and Southern Avenue. (District 4)

## Request:

Requesting a Substantial Conformance Incentive Permit (SCIP) to allow deviations from certain development standards for development of a coffee shop with a drive-thru in the Limited Commercial (LC) zoning district.

