



Design Review Board



DRB24-01077

Get Air Sports Mesa



Request

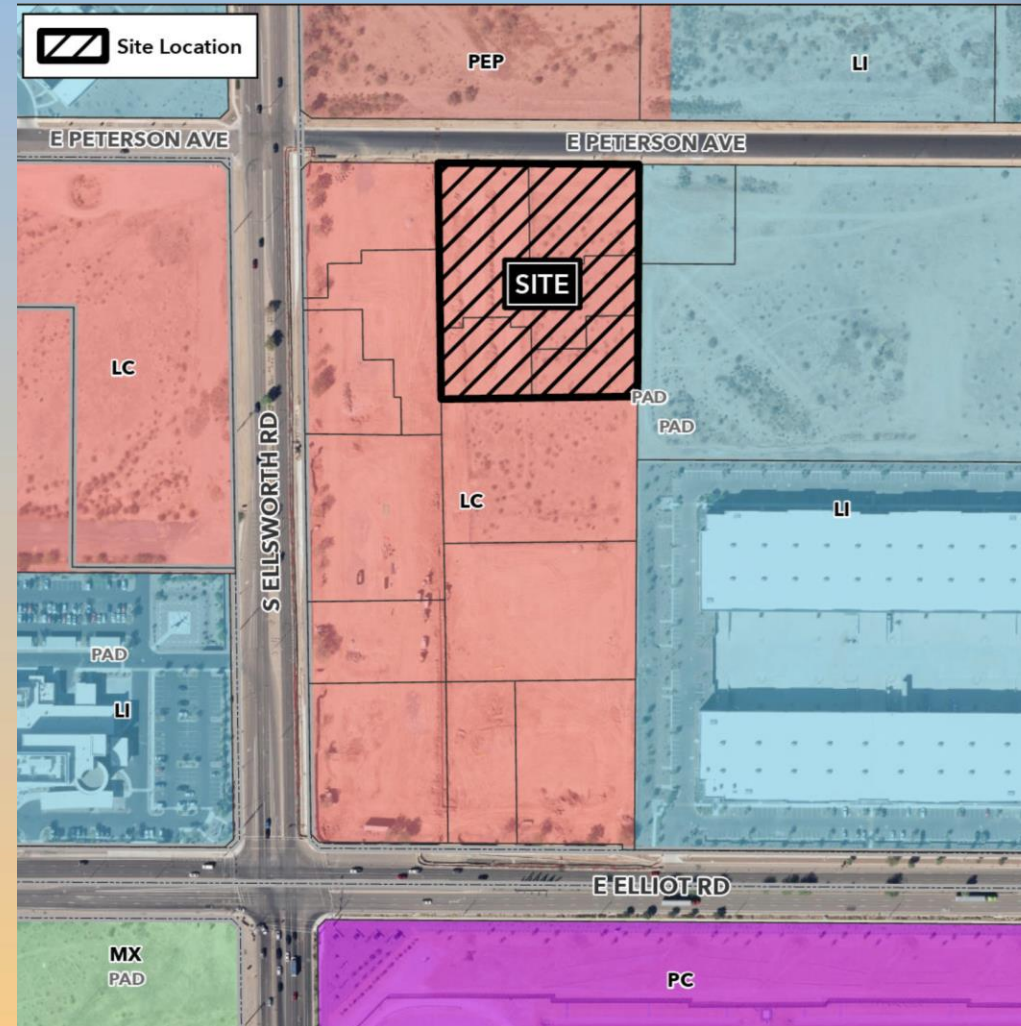
- Design Review
- For a Small-Scale Commercial Recreation facility and attached commercial uses





Location

- East side of Ellsworth Road
- North side of Elliot Road





Site Photo



Looking north towards the site from Elliot
Road



Site Photo

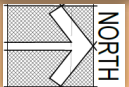
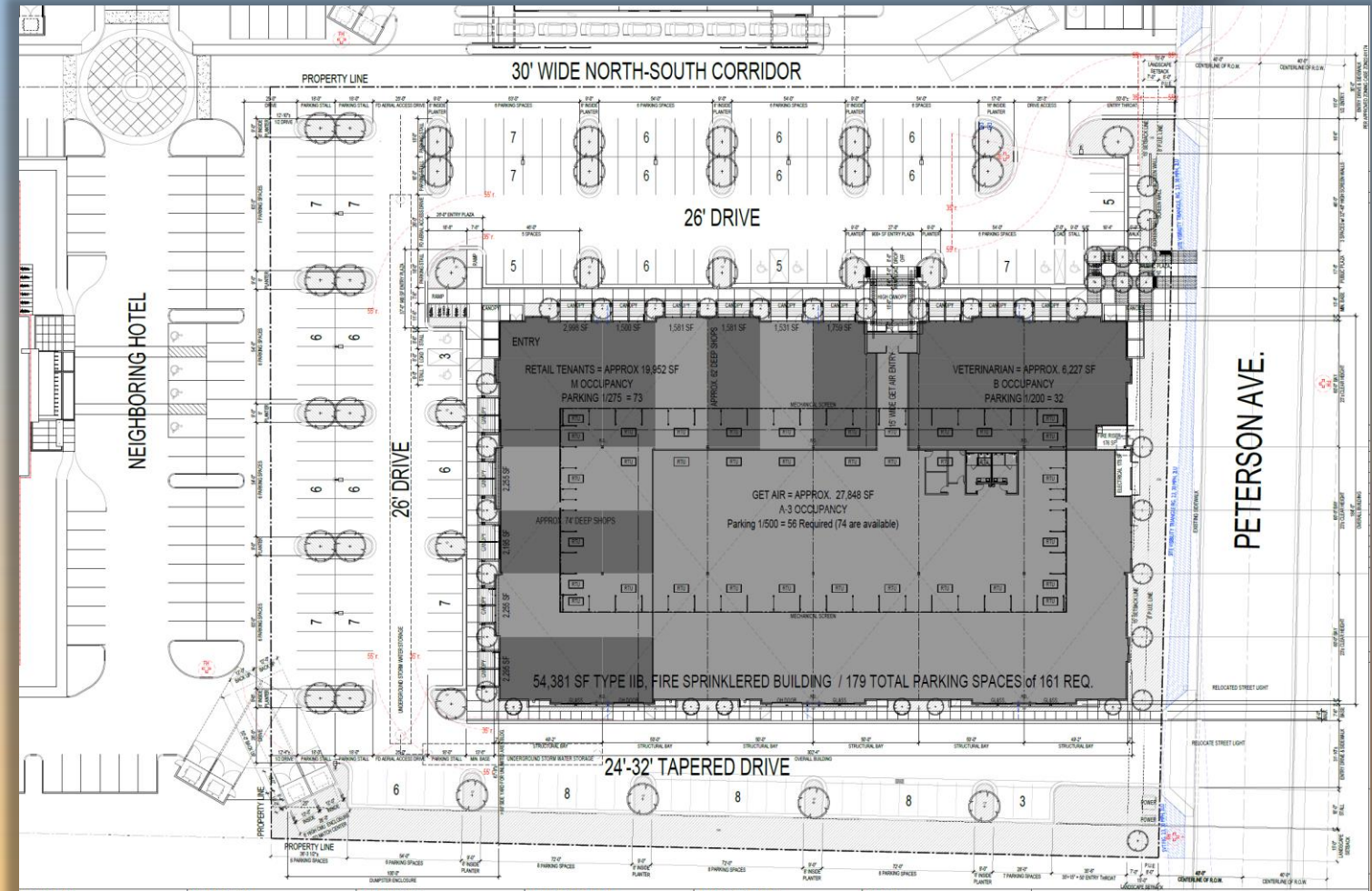


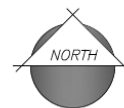
Looking south towards the site from Peterson Avenue




Site Plan

- 54,400 sq. ft. building
- Public building entries at the west and south building facades
- Primary vehicular access from Peterson Avenue
- 161 parking spaces required; 179 parking spaces proposed











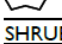
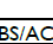


MATERIALS	SIZE	QTY
 "AZ Brown" Decomposed Granite or Equal	1/2" Screened 2" Depth Min.	22,372 S.F.







Landscape Plan

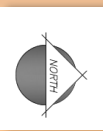
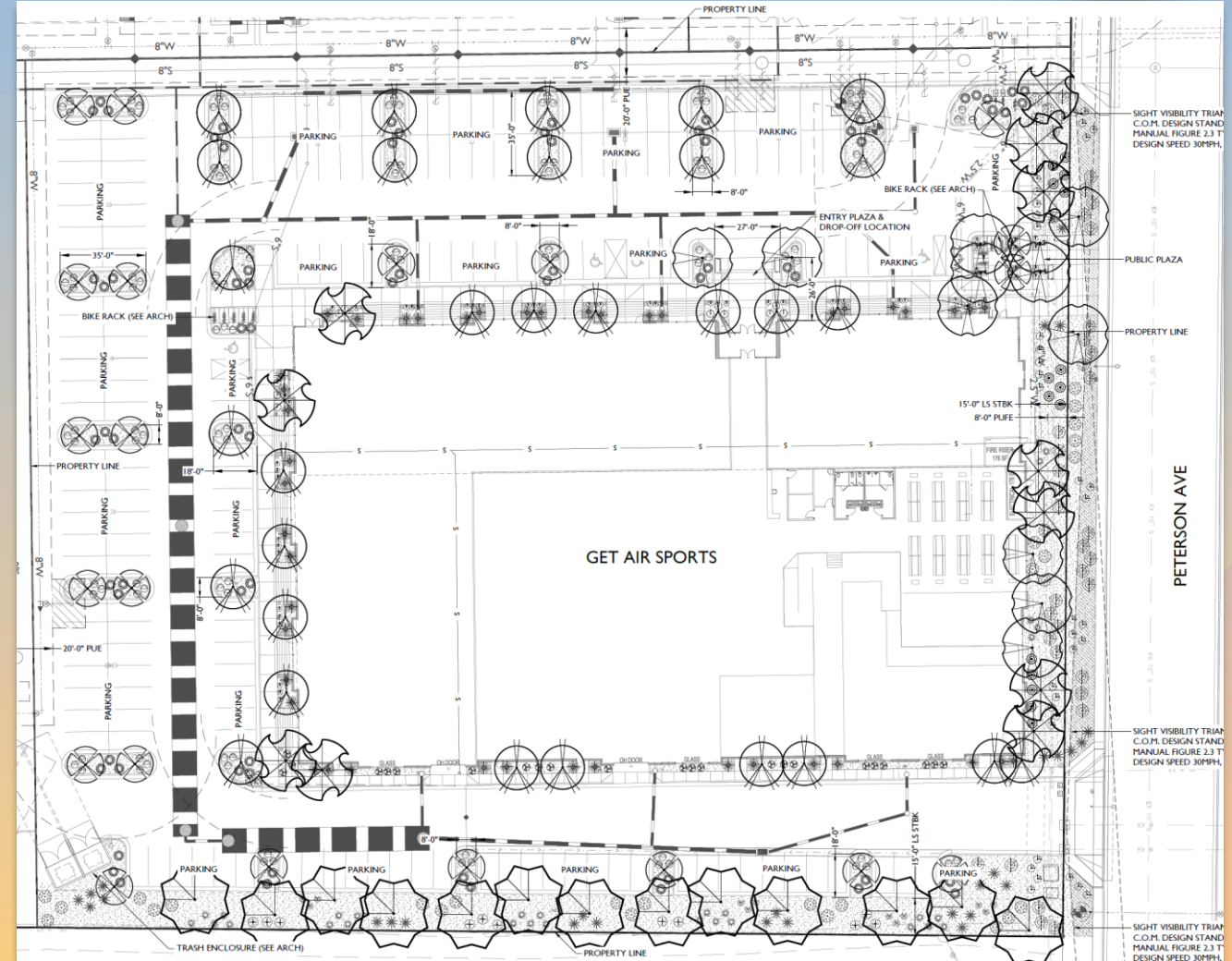
PLANT LEGEND

SYMBOL	SCIENTIFIC NAME			
TREES	COMMON NAME	MATURE CANOPY	SIZE	QTY
	Acacia aneura	15' dia.	24" Box	21
	Mulga			
	Caesalpinia cacalaco	18' dia.	24" Box	30
	Casalote 'Smoothie'			
	Chitalpa tashkentensis	25' dia.	36" Box	11
	Chitalpa			
	Parkinsonia praecox	25' dia.	36" Box	12
	Palo Brea			
	Prosopis hybrid 'Phoenix'	30' dia.	24" Box	13
	Thornless Mesquite			

SHRUBS/ACCENTS	COMMON NAME	SIZE	QTY
	Agave desmettiana	Smooth Agave	5 Gal 15
	Aloe hybrid 'Blue Elf'	Blue Elf Aloe	5 Gal 60
	Dasylirion wheeleri	Desert Spoon	5 Gal 29
	Hesperaloe parviflora 'Brakelights'	Brakelights Red Yucca	5 Gal 12
	Leucophyllum langmaniae 'Rio Bravo'	Rio Bravo Sage	5 Gal 31
	Muhlenbergia rigida 'Nashville'	Purple Muhly	5 Gal 30
	Muhlenbergia lindheimeri 'Autumn Glow'	Autumn Glow Muhly	5 Gal 44
	Muhlenbergia rigens	Deer Grass	5 Gal 71
	Pedilanthus macrocarpus	Lady's Slipper	5 Gal 23
	Russelia equisetiformis	Coral Fountain	5 Gal 15
	Simmondsia chinensis 'Vista'	Compact Jojoba	5 Gal 11

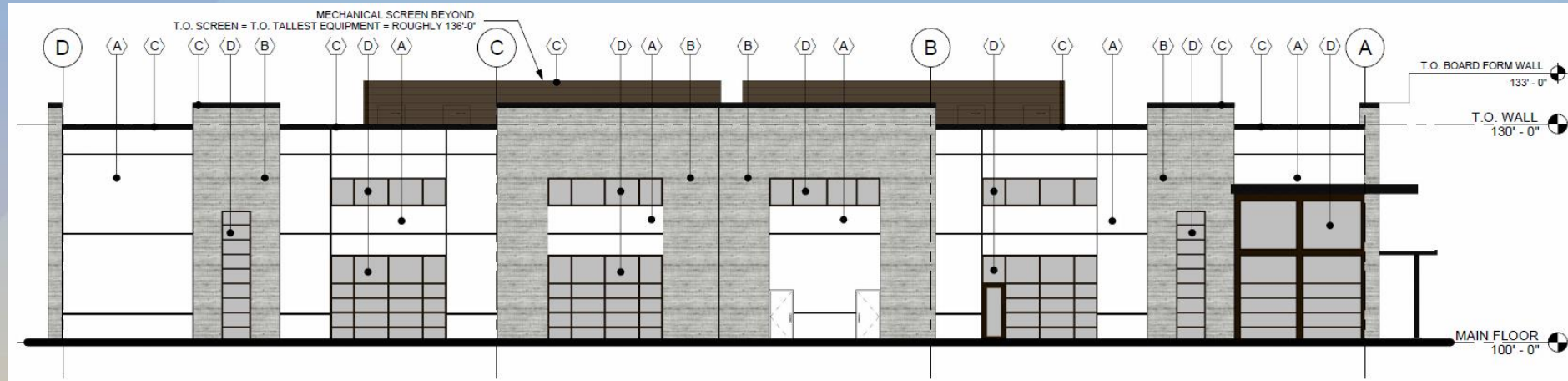
GROUNDCOVERS	COMMON NAME	SIZE	QTY
	Convolvulus cneorum	Bush Morning Glory	1 Gal 35
	Eremophila prostrata 'Outback Sunrise'	Outback Sunrise	1 Gal 36
	Lantana x 'New Gold'	New Gold Lantana	1 Gal 111

MATERIALS	SIZE	QTY
	"AZ Brown" Decomposed Granite or Equal	22,372 S.F.
	1/2" Screened 2" Depth Min.	

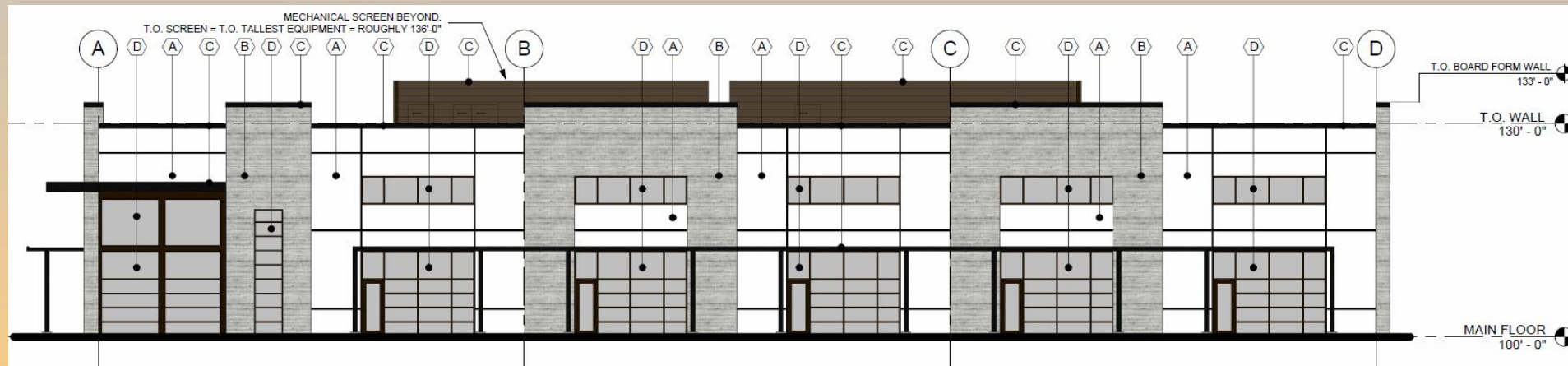




Elevations



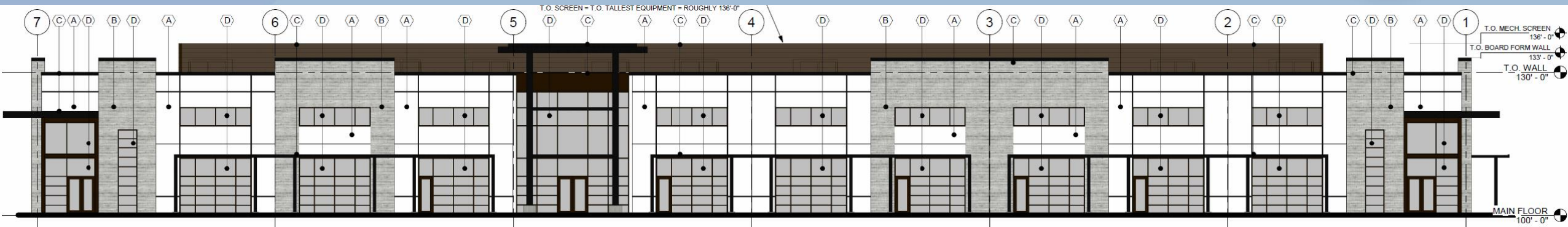
North Elevation



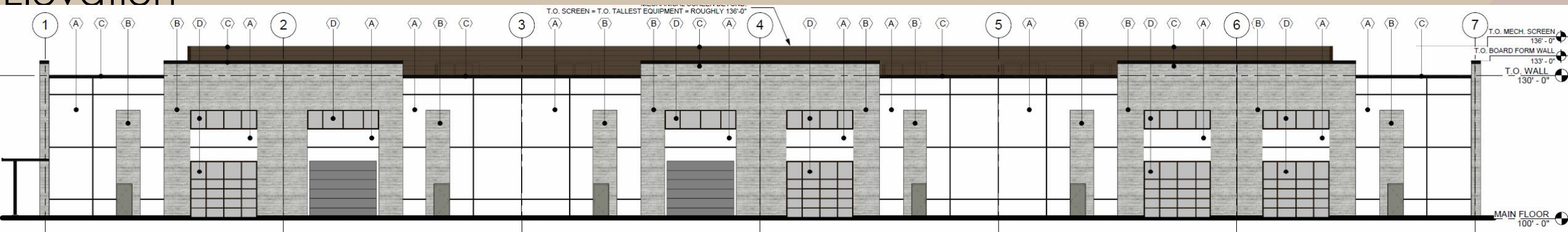
South Elevation



Elevations



West
Elevation



East
Elevation



Rendering





Rendering





S ELEVATION GET AIR MESA, AZ



SE CORNER GET AIR MESA, AZ



BIRD'S EYE VIEW GET AIR MESA, AZ

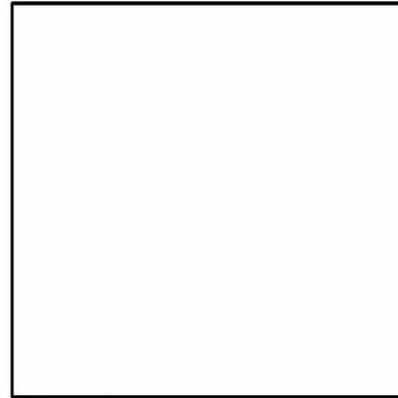


NE CORNER GET AIR MESA, AZ

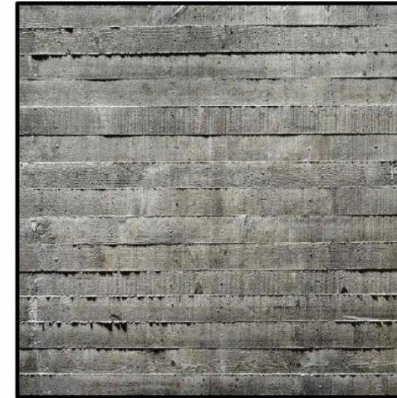




Colors and Materials



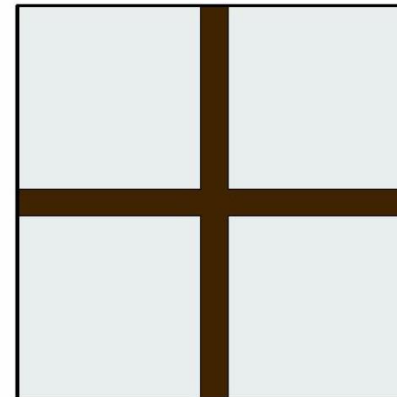
(A) WHITE CONCRETE TILT-UP
FINISH: SMOOTH
PAINT: SHERWIN WILLIAMS SW7626 ZURICH WHITE



(B) BOARDFORM CONCRETE TILT-UP
FINISH: INSET w/ BOARDFORM TEXTURE
COLOR: HUNTINGTON GRAY-NW GRAY



(C) METAL CANOPY/COPING/PANELING
FINISH: PAINTED OR PRE-FINISHED STEEL
PAINT/COLOR: MATCHING DARK BRONZE



(D) STOREFRONT FRAMING
MFT/FRAME: KAWNEER DARK BRONZE
GLASS: CLEAR



Alternative Compliance

- ✓ Materials. No more than 50% of the façade may be covered with one single material



Findings

Staff is seeking your review and recommendation on the following:

- ✓ Proposed building elevations and landscape design
- ✓ Alternative Compliance for building materials

Staff welcomes any feedback



Design Review Board