



# Design Review Board



# DRB25-00972

# Brakes Plus Mesa

Emily Johnson, Planner II

April 14, 2026



# Request

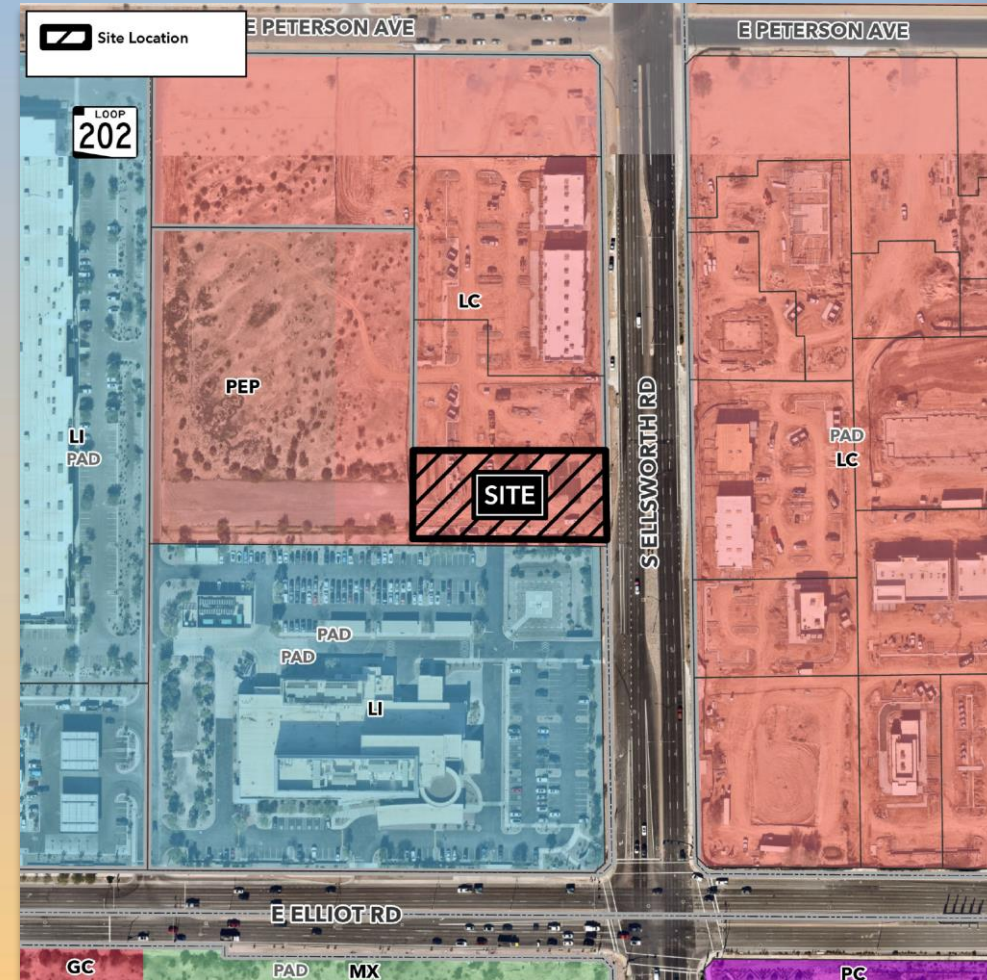
- Design Review
- Minor Auto Repair Facility





# Location

- West side of Ellsworth Road
- North of Elliot Road





# Site Photo



Looking west from Ellsworth Road



# Site Photo

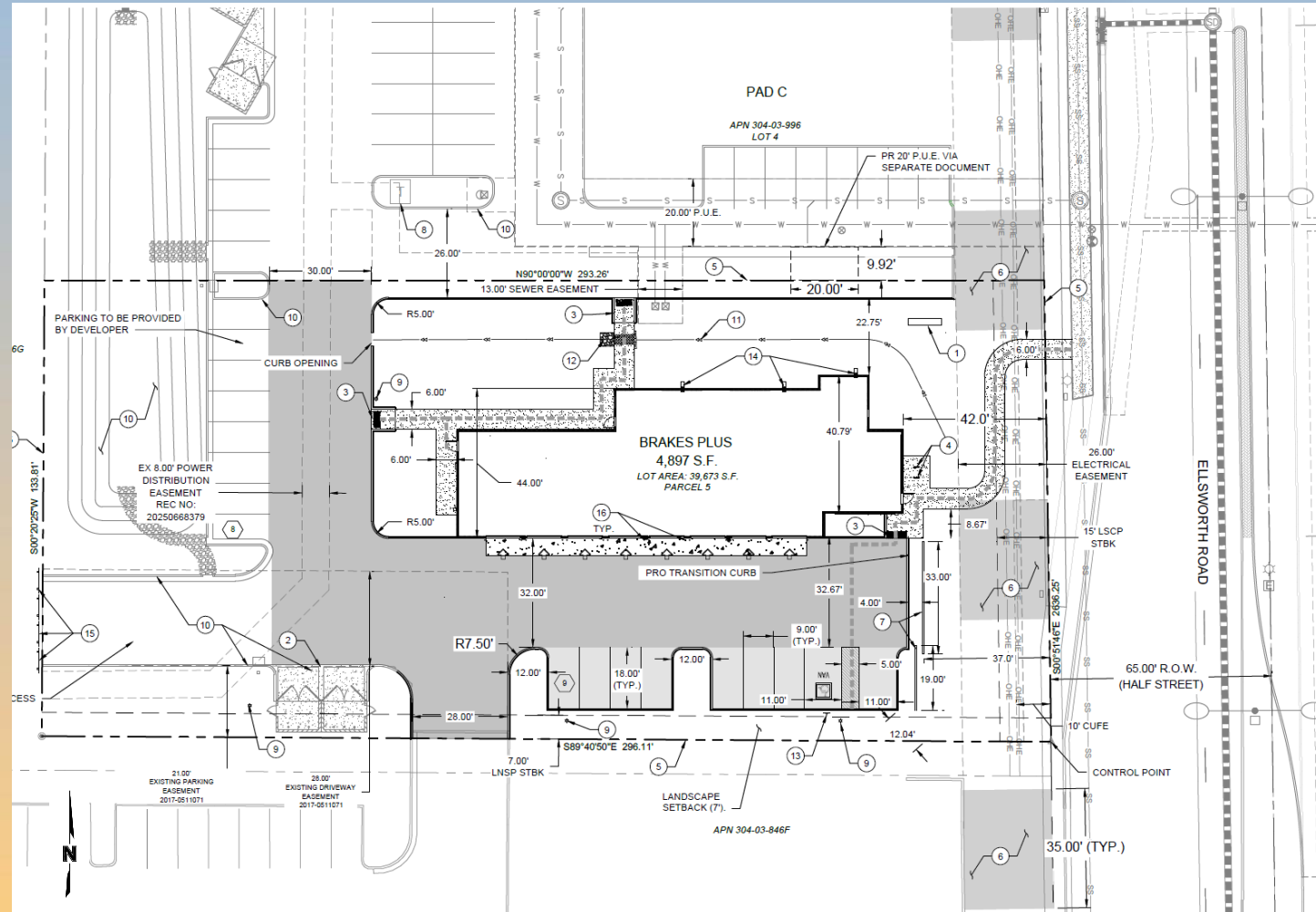


Looking northeast from the hospital parking lot



# Site Plan

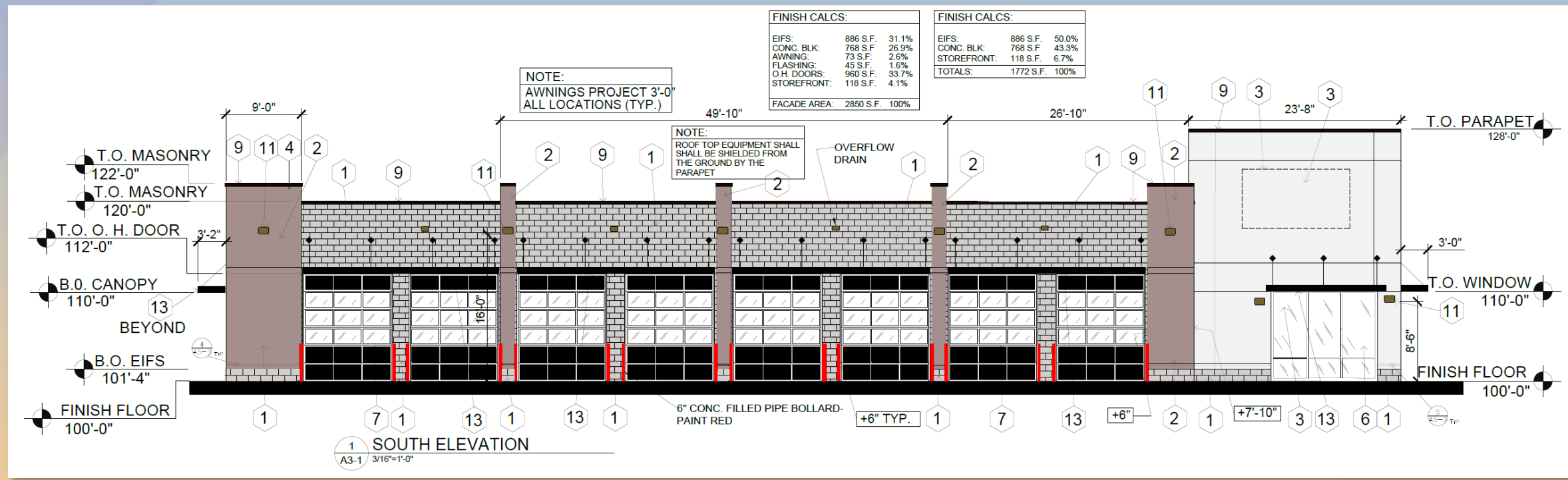
- 4,897 SF building  
Bay doors facing south
- Primary access –  
Internal drive to the  
north connecting to  
Ellsworth Road and  
Peterson Avenue
- Parking spaces –  
Required: 14  
Provided: 17





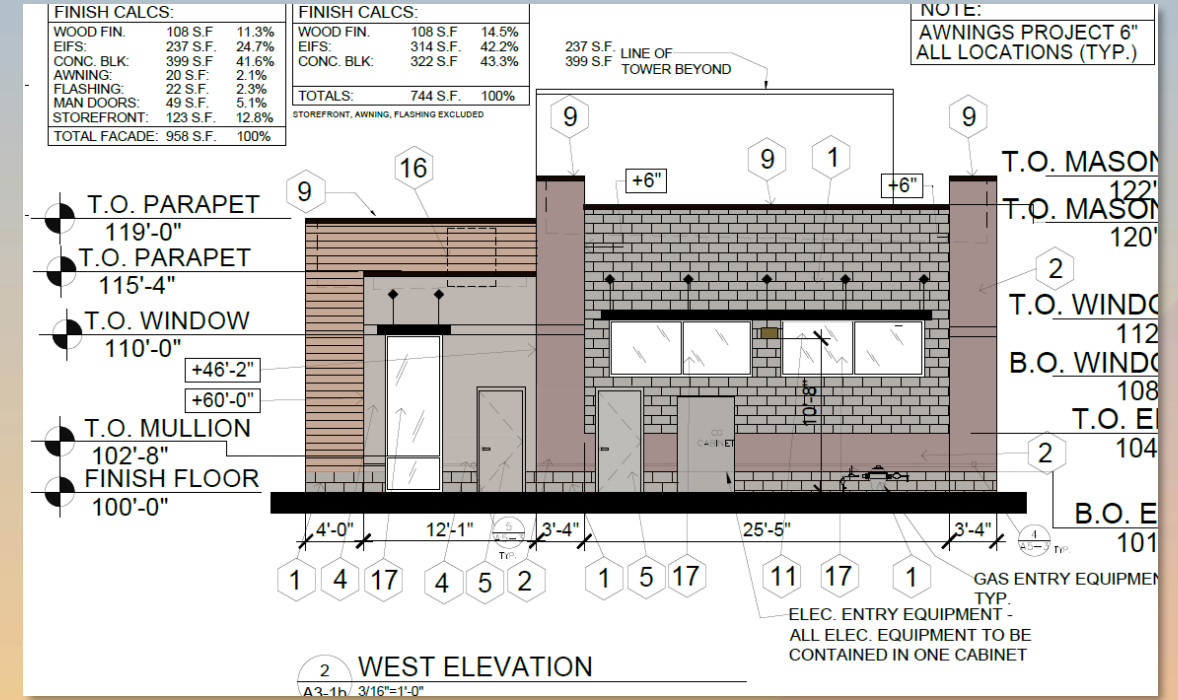
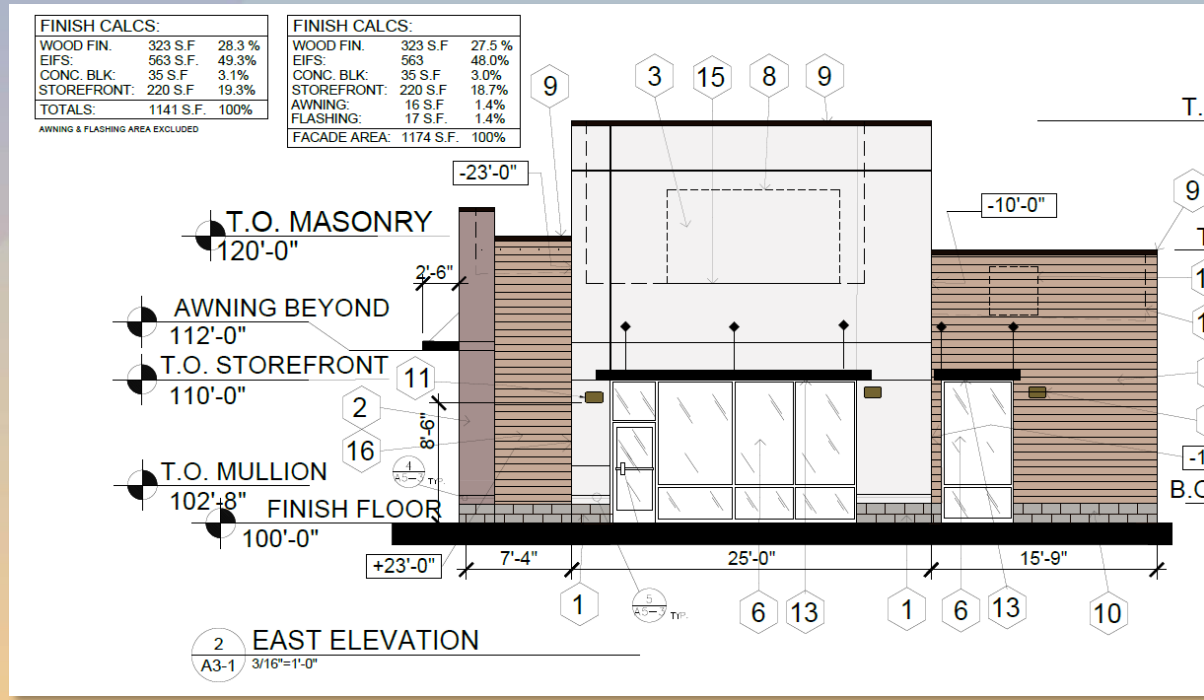


# Elevations



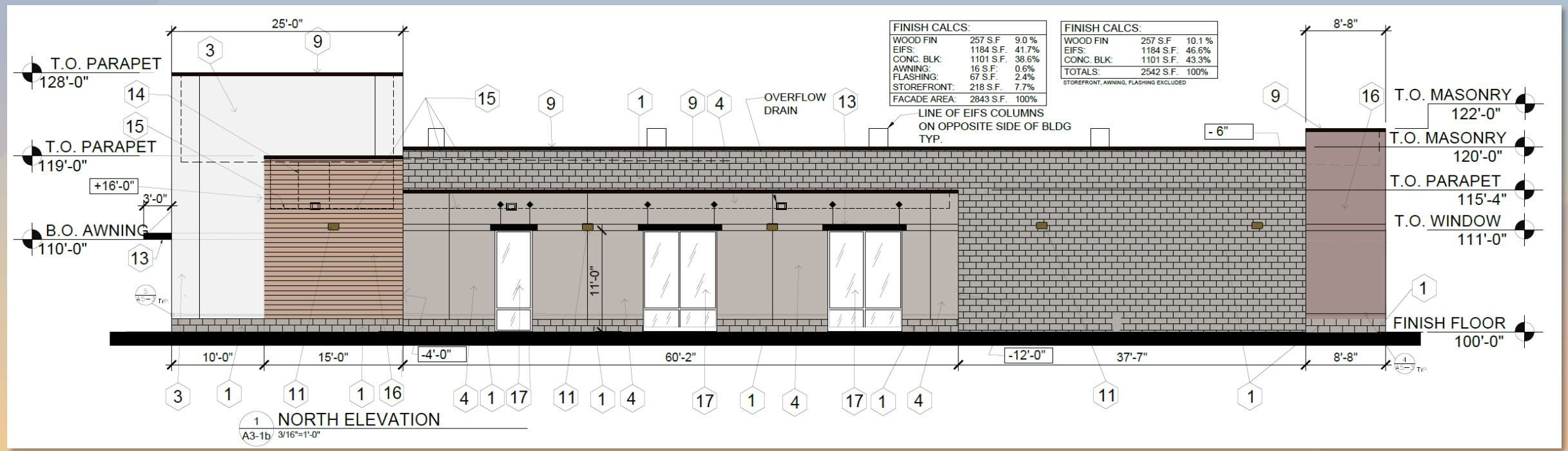


# Elevations





# Elevations





# Renderings





# Renderings





# Colors and Materials

**BRAKES PLUS - MESA, ARIZONA**

1

16

13

7

9

2

4

3

|  |   |   |
|--|---|---|
| <ol style="list-style-type: none"> <li>1. OLD CASTLE CONG. BLOCK - SMOOTH FINISH #8816 MW (PEPPERCORN)</li> <li>2. EIFS - MATCH SHERWIN-WILLIAMS #SW-7842 PAVESTONE</li> <li>3. EIFS - MATCH SHERWIN-WILLIAMS #SW-7696 FLEUR DE SEL</li> <li>4. EIFS - MATCH SHERWIN-WILLIAMS #SW-9173 SHIITAKE</li> <li>5. METAL DOOR - PAINT COLOR TO MATCH ADJACENT MATERIAL</li> </ol> | <ol style="list-style-type: none"> <li>6. ALUMINUM/GLASS STOREFRONT - BLACK ANODIZED</li> <li>7. ALUMINUM SECTIONAL OVERHEAD DOORS - BLACK ANODIZED</li> <li>8. SIGN AREA - UNDER SEPARATE CONTRACT</li> <li>9. METAL FLASHING TO MATCH STOREFRONT COLOR</li> <li>10. NOT USED</li> </ol> | <ol style="list-style-type: none"> <li>11. EXTERIOR LIGHT - BLACK ANODIZED FINISH</li> <li>12. NOT USED</li> <li>13. METAL AWNING - BERRIDGE BLACK</li> <li>14. HVAC BEHIND PARAPET</li> <li>15. LINE OF ROOF</li> <li>16. NICHHA WOOD SIMULATED FIBER SIDING - COLOR VINTAGEWOOD - POPLAR</li> <li>17. BLACK SPANDREL GLASS IN BLACK ANODIZED FRAME</li> </ol> |
|--|---|---|



# Findings

Staff is seeking review and recommendation on the following:

- ✓ Proposed building elevations and landscape design

***Staff welcomes any feedback***



# Design Review Board



# Approved Elevations (DRB23-00571)





# Approved Elevations (DRB23-00571)

