

REVISIONS:

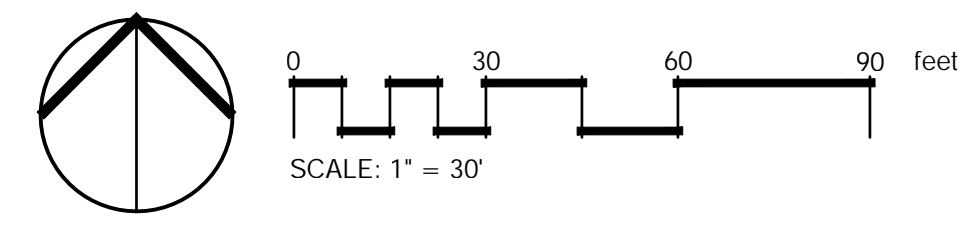
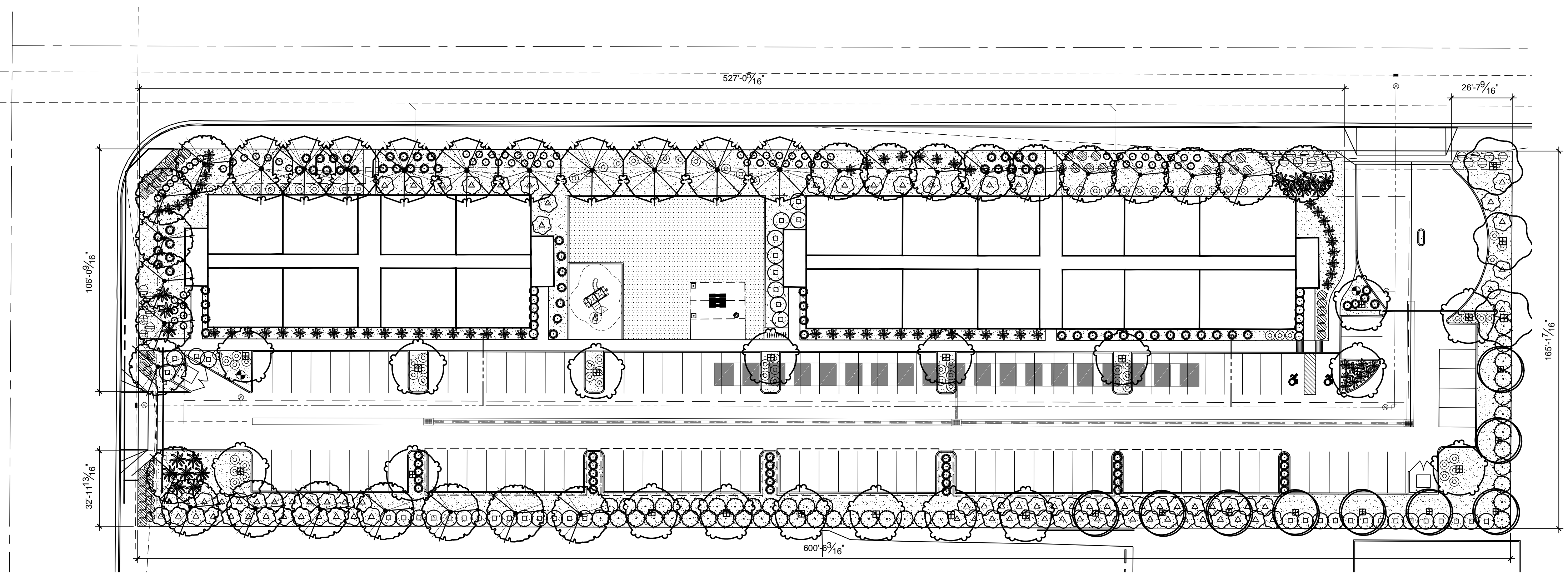
| | |
|--|--|
| | |
| | |
| | |
| | |
| | |

PROJECT: **COUNTRY CLUB APARTMENTS**
 COUNTRY CLUB AND BROWN ROAD, MESA, ARIZONA

| | |
|----------|-------|
| Job No. | 23010 |
| Drawn By | TCL |
| Checked | TCL |

Contact Arizona 811 at least two full working days before you begin excavation
ARIZONA 811
 Call 811 or visit arizona811.com

| | |
|-----------|-------|
| JOB NO. | 24003 |
| SHEET NO. | |



| LANDSCAPE CALCULATIONS | | |
|--------------------------------|--------------------------|----------|
| Total Open Space Area | 34,392 Square Feet | |
| Plant Material Coverage | 27,531 Square Feet (80%) | |
| Total Parking lot trees | 12 | |
| Foundation base length | N/A | |
| | REQUIRED | PROVIDED |
| Street Frontage Trees | 28 | 28 |
| 36" Street Frontage Trees | 7 | 10 |
| Ocotillo substitution | N/A | N/A |
| 24" Street Frontage Trees | 14 | 21 |
| Street Frontage Shrubs | 136 | 255 |
| 5 Gal. Street Frontage Shrubs | 54 | 182 |
| 36" box parking lot trees | 1 | 12 |
| Perimeter trees | 23 | 25 |
| Perimeter shrubs | 160 | 160 |
| Foundation base trees required | N/A | N/A |
| 36" box foundation base trees | N/A | N/A |
| Foundation base LF required | N/A | N/A |

PLANT SCHEDULE

| SYMBOL | BOTANICAL / COMMON NAME | SIZE | QTY |
|---------------|---|---------|-----|
| TREES | | | |
| | Olea europaea 'Fruitless' Fruitless Olive | 36" Box | 24 |
| | Parkinsonia x 'Desert Museum' Desert Museum Palo Verde | 24"box | 9 |
| | Pistacia x 'Red Push' Pistache | 24"box | 10 |
| | Quercus virginiana 'Heritage' Heritage Southern Live Oak | 24" Box | 3 |
| | x Chitalpa tashkentensis 'Pink Dawn' Pink Dawn Chitalpa | 36" Box | 18 |
| SHRUBS | | | |
| | Bougainvillea x 'Barbara Karst' Barbara Karst Bougainvillea | 5 gal. | 84 |
| | Caesalpinia pulcherrima Red Bird Of Paradise | 5 gal. | 45 |
| | Carissa macrocarpa 'Boxwood Beauty' Beauty Natal Plum | 5 gal. | 12 |
| | Dasyliro longissimum Toothless Desert Spoon | 5 gal. | 17 |
| | Dodonaea viscosa 'Green' Green Hopseed Bush | 5 gal. | 41 |
| | Hesperaloe parviflora 'Perpa' TM Brakelights Red Yucca | 5 gal. | 68 |
| | Lantana x 'New Gold' New Gold Lantana | 1 gal. | 54 |
| | Muhlenbergia capillaris 'Regal Mist' TM Regal Mist Pink Muhly Grass | 5 gal. | 97 |
| | Rosmarinus officinalis 'Huntington Carpet' Huntington Carpet Rosemary | 1 gal. | 25 |
| | Ruellia penninsularis Wild Petunia | 5 gal | 88 |
| | Russelia equisetiformis Firecracker Plant | 5 gal. | 69 |

| SYMBOL | BOTANICAL / COMMON NAME | QTY |
|----------------------|---|----------|
| GROUND COVERS | | |
| | Cynodon dactylon 'Midiron' Bermuda Grass | 3,941 sf |

REFERENCE NOTES SCHEDULE

| SYMBOL | CONCRETE CURB DESCRIPTION |
|--------|---|
| | New 6" Mowstrip |
| SYMBOL | ROCK DESCRIPTION |
| | 1/2" screened decomposed granite. Express Carmel color at 2" Depth. |

NOTE:
 THE CRITERIA USED FOR THE SIGHT VISIBILITY TRIANGLE IS FOR 50 MPH FOR A 6 LANE DIVIDED ROAD REQUIRING A DISTANCE OF 662'.