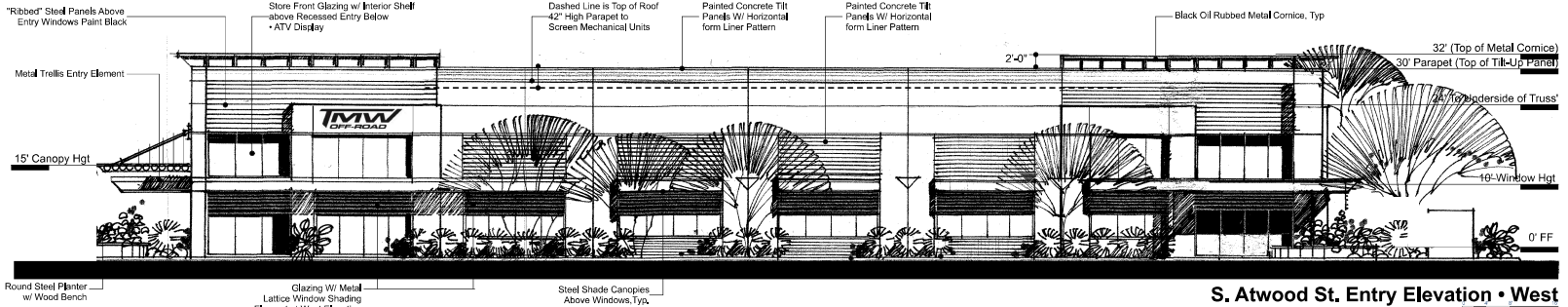
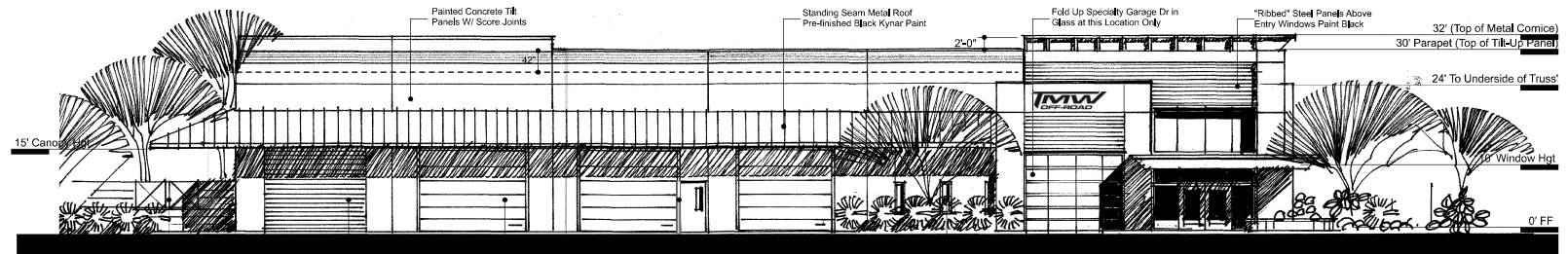


Proposed Sales and Fabrication Shop
 TMW Off Road

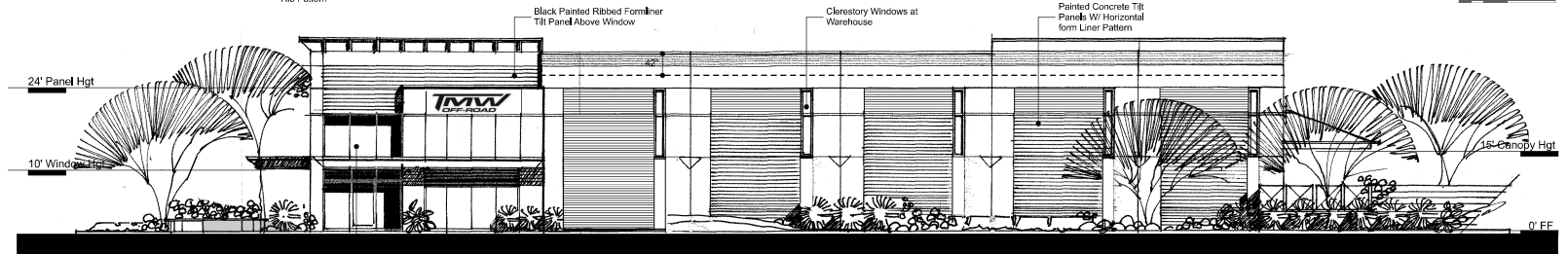
FARNSWORTH
 CONSULTANTS
 Mesa, Arizona
 TRN Architects | Farnsworth Construction
 Rev 05/25/22 Rev 05/24/23 Rev 06/02/23



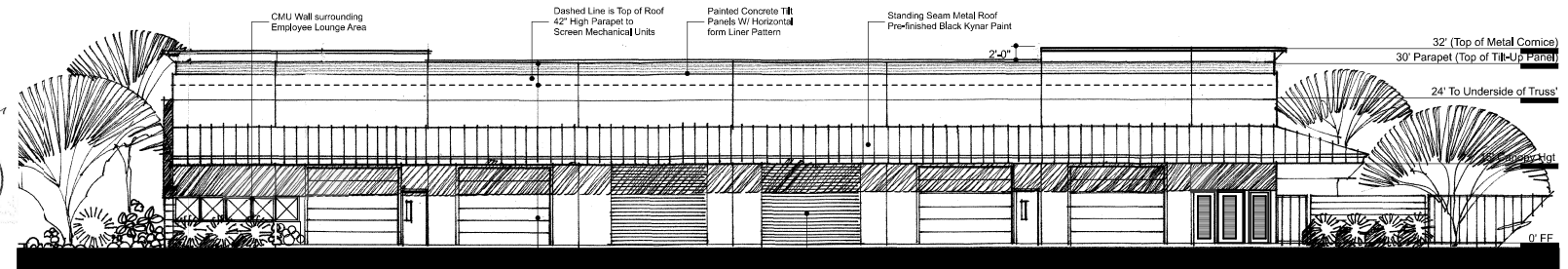
S. Atwood St. Entry Elevation • West



Building Entry Elevation • North



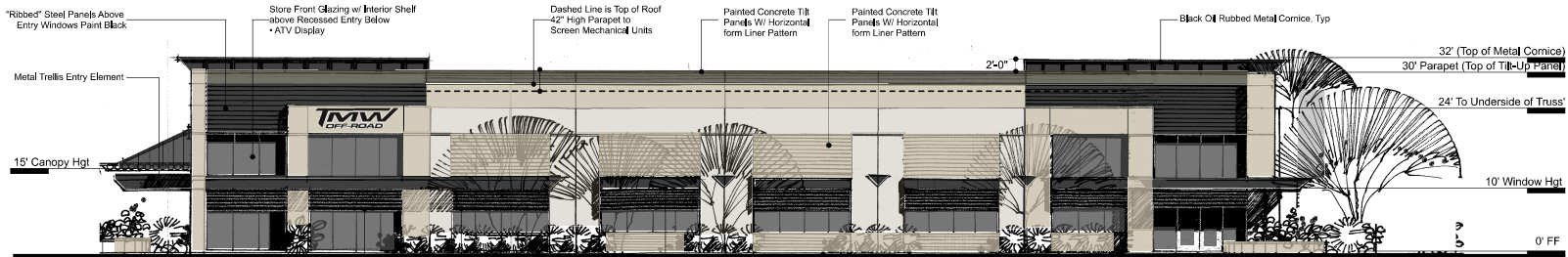
Winston Ave Elevation • South



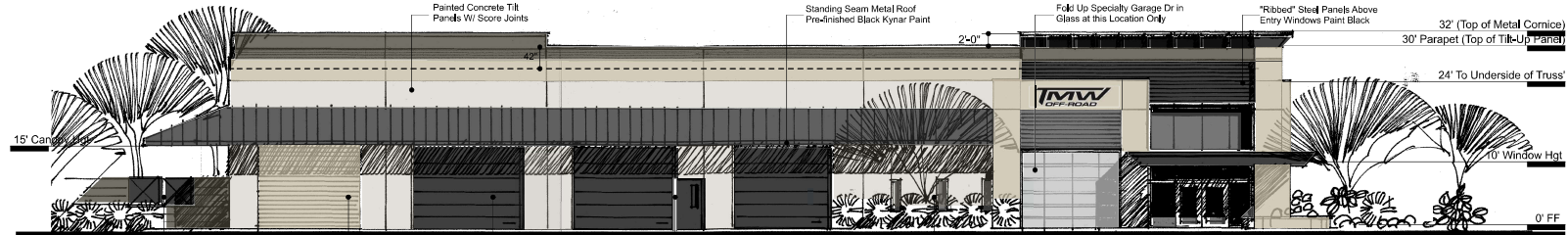
Storage Yard Elevation • East

Black and White Elevations

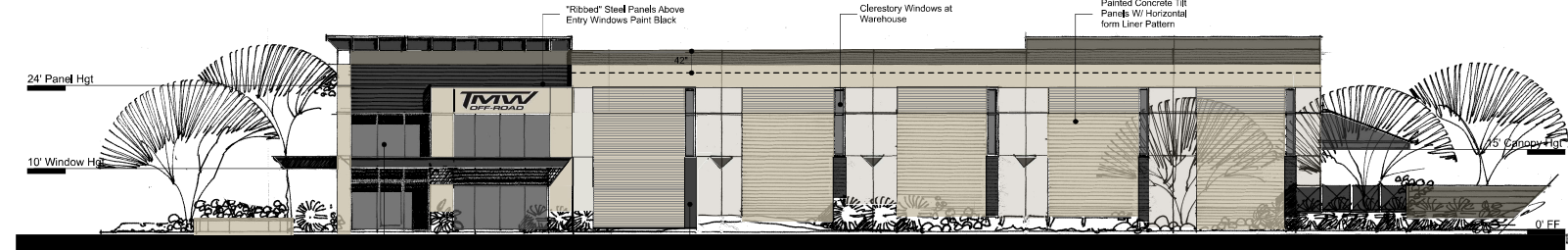




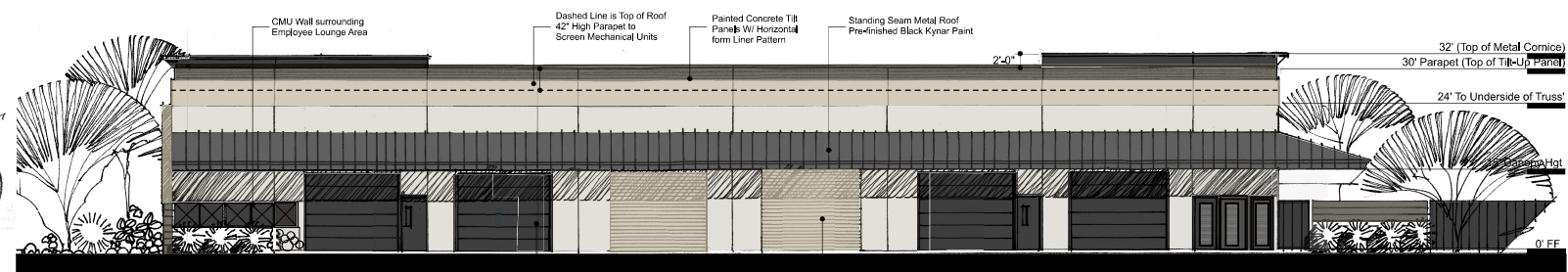
S. Atwood St. Entry Elevation • West



Building Entry Elevation • North



Winston Ave Elevation • South



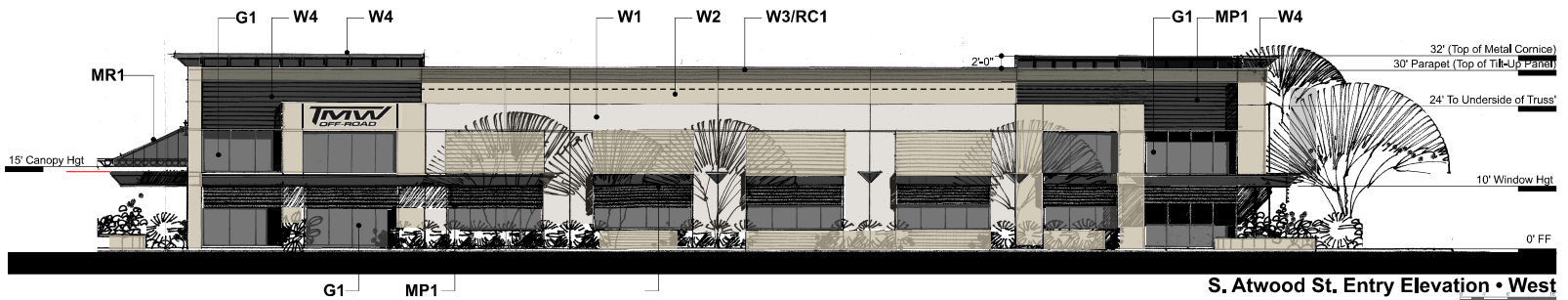
Storage Yard Elevation • East

Color Elevations

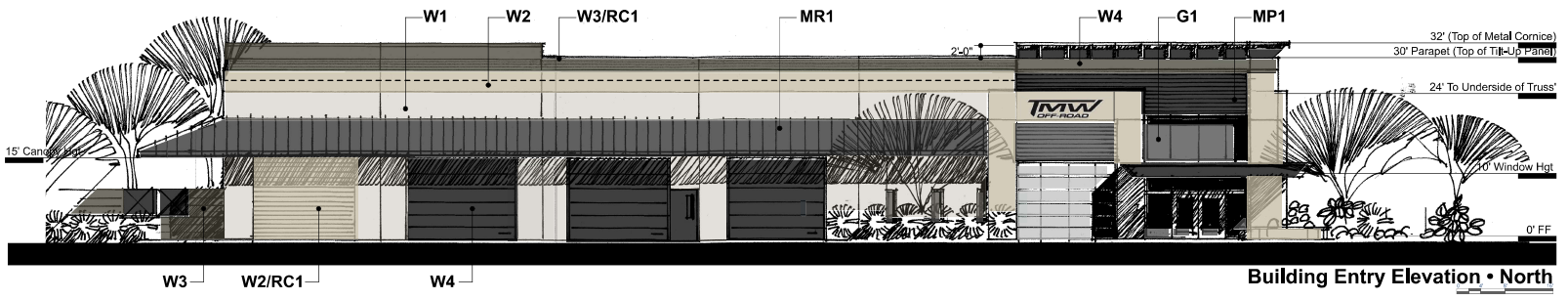




FARNSWORTH
CONSTRUCTION
Mesa, Arizona
TRN Architects | Farnsworth Construction
Rev 08/02/2022 Rev 05/04/2023 Rev 06/02/2023



S. Atwood St. Entry Elevation • West



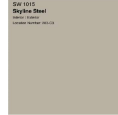
Building Entry Elevation • North

Exterior Color and Materials Board:

Exterior Walls:



W1 • Primary Painted Tilt Panel Walls
MFR: Sherwin Williams
Color: SW 7646 "First Star"



W2 • Accent Painted Tilt Panel Walls
MFR: Sherwin Williams
Color: SW 1015 "Skyline Steel"



W3 • Accent Painted Tilt Panel Walls and CMU
MFR: Sherwin Williams
Color: SW 7019 "Guantlet Gray"



W4 • Accent Painted Tilt Panel Walls Below Slot Windows
MFR: Sherwin Williams
Color: SW 7019 "Guantlet Gray"

Metal Painted Shading Elements:



MP1 • Metal Shade Elements
Metal Ribbed Panels
MFR: Sherwin Williams
Color: SW SW6258 "Tricorn Black"

Ribbed Concrete Form Liner:



RC1 • Ribbed Concrete Form Liner
MFR: Fitzgerald Formliners
Color: Varies

VinylLok™
Styrene - Single use.
ABS Plastic - Up to 18 reuses.

Part Size:
6" Wide Coverage,
lengths up to 40'

MaxDepth: 0.5"
On Center: 1.5"
Peak: 0.5"
Valley: 0.5"
Draft: 0.25"

Metal Roofing:



MR1 • Painted Metal Roofing
MFR: Wester States Metal Roofing
Color: Charcoal Gray

Glazing and Frames:



G1 • Window Glazing
MFR: PPG
Color: Solar Ban 90 Gray



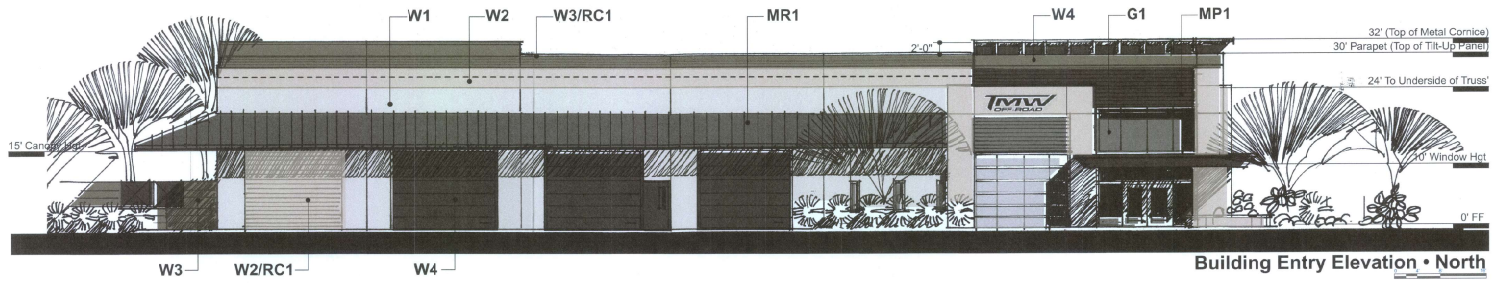
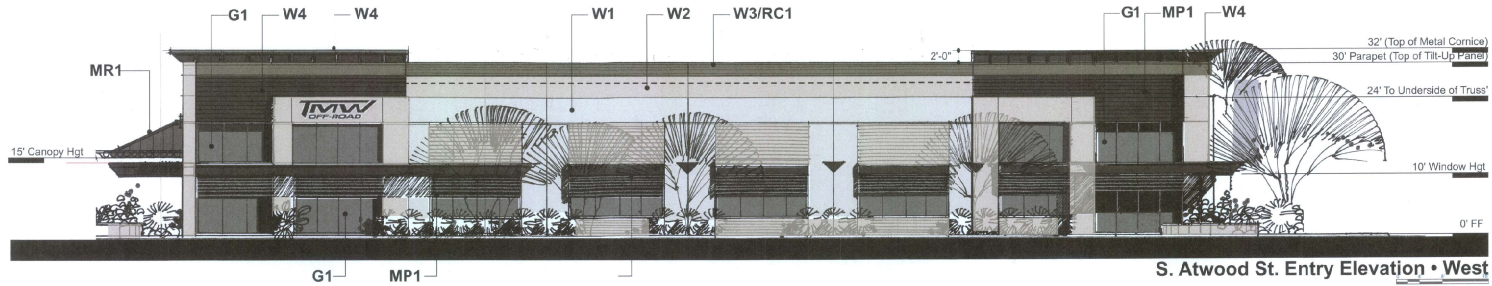
G1 • Anodized Aluminum Storefront
Color: Anodized Black

TMW Off Road
Proposed Sales and Fabrication Shop





Mesa, Arizona
 TRN Architects | Farnsworth Construction
 Rev. 05/05/2022, Rev. 05/04/2023



Exterior Color and Materials Board:

Exterior Walls:



W1 • Primary Painted Tilt Panel Walls
 MFR: Sherwin Williams
 Color: SW 7646 "First Star"

W2 • Accent Painted Tilt Panel Walls
 MFR: Sherwin Williams
 Color: SW 1015 "Skyline Steel"

W3 • Accent Painted Tilt Panel Walls and CMU
 MFR: Sherwin Williams
 Color: SW 7019 "Quantel Gray"

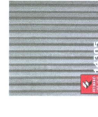
W4 • Accent Painted Tilt Panel Walls Below Six Windows
 MFR: Sherwin Williams
 Color: SW 7019 "Quantel Gray"

Metal Painted Shading Elements:



MP1 • Metal Shade Elements
 Metal Ribbed Panels
 MFR: Sherwin Williams
 Color: SW SW6258 "Tricorn Black"

Ribbed Concrete Form Liner:



RC1 • Ribbed Concrete Form Liner
 MFR: Fitzgerald Formliners
 Color: Varies

Vinylak™
 Styrene - Single use.
 ABS Plastic - Up to 10 reuses.

Part Size:
 6" Wide Coverage,
 lengths up to 40"
 Max Depth: 0.5"
 On Center: 1.5"
 Peak: 0.5"
 Valley: 0.25"
 Draft: 0.25"

Metal Roofing:



MR1 • Painted Metal Roofing
 MFR: Weser States Metal Roofing
 Color: Charcoal Gray

Glazing and Frames:



G1 • Window Glazing
 MFR: PPG
 Color: Sclar Ban 90 Gray



G1 • Anodized Aluminum Storefront
 Color: Anodized Black

Exterior Materials Calculations:

West Elevation (Atwood):

TOTAL ELEVATION AREA: 5,639 S.F.
 CONCRETE TILT PANEL - (3,439 S.F.)
 -PAINTED SMOOTH FINISH w/ SCORES - 2,527 S.F. - 44%
 -PAINTED w/ 'FORMLINER' FINISH - 912 S.F. - 16%
 GLASS / GLAZING - 1,318 S.F. - 23%
 STEEL CANOPIES / CORNICES - 482 S.F. - 9%
 STEEL RIBBED PANELS - 400 S.F. - 7%

North Elevation:

TOTAL ELEVATION AREA: 5,056 S.F.
 CONCRETE TILT PANEL - (2,445 S.F.)
 -PAINTED SMOOTH FINISH w/ SCORES - 336 S.F. - 7%
 -PAINTED w/ 'FORMLINER' FINISH - 2,109 S.F. - 42%
 GLASS / GLAZING - 574 S.F. - 11%
 STEEL CANOPIES / CORNICES - 1,181 S.F. - 23%
 STEEL RIBBED PANELS - 189 S.F. - 4%
 STEEL OVERHEAD DOORS - 667 S.F. - 13%

East Elevation (89th):

TOTAL ELEVATION AREA: 5,203 S.F.
 CONCRETE TILT PANEL - (4,242 S.F.)
 -PAINTED SMOOTH FINISH w/ SCORES - 2517 S.F. - 48%
 -PAINTED w/ 'FORMLINER' FINISH - 1,725 S.F. - 33%
 GLASS / GLAZING - 575 S.F. - 11%
 STEEL CANOPIES / CORNICES - 191 S.F. - 4%
 STEEL RIBBED PANELS - 194 S.F. - 4%

South Elevation (Winnston):

TOTAL ELEVATION AREA: 5,863 S.F.
 CONCRETE TILT PANEL - (3,172 S.F.)
 -PAINTED SMOOTH FINISH w/ SCORES - 2,682 S.F. - 46%
 -PAINTED w/ 'FORMLINER' FINISH - 490 S.F. - 9%
 STEEL CANOPIES / CORNICES - 1,537 S.F. - 27%
 STEEL OVERHEAD DOORS - 786 S.F. - 14%
 EMPLOYEE DECO WALL - 168 S.F. - 3%

TMW Off Road
 Proposed Sales and Fabrication Shop





FARNSWORTH CONSTRUCTION CO.
4447 E. Broadway Rd., Mesa, Arizona 85209

A New Development for:
TMW Offroad, LLC
7453 South Atwood St.
Mesa, Arizona



Job #: 22-00026

Date: 06-08-2022

By:

S. ATWOOD AVE. VIEW - WEST
CONCEPTUAL PERSPECTIVE

A3.1

THIS DRAWING IS AN INSTRUMENT OF SERVICE AND THE PROPERTY OF
FARNSWORTH CONSTRUCTION CO. AND SHALL REMAIN ITS PROPERTY. THE USE
OF THIS DRAWING SHALL BE RESTRICTED TO THE ORIGINAL SITE FOR WHICH
IT WAS PREPARED AND NO ALTERATION, REVISION, OR REUSE OF SUCH
DRAWING, OR REPRODUCTION, PUBLICATION BY ANY METHOD IN WHOLE OR
IN PART, IS PERMITTED WITHOUT THE WRITTEN CONSENT OF FARNSWORTH CONSTRUCTION CO.



FAIRSWORTH CONSTRUCTION CO.
4447 E. Broadway Rd., Mesa, Arizona 85209

A New Development for:
TMW Offroad, LLC
7453 South Atwood St.
Mesa, Arizona



Job #: 22-00026

Date: 06-08-2022

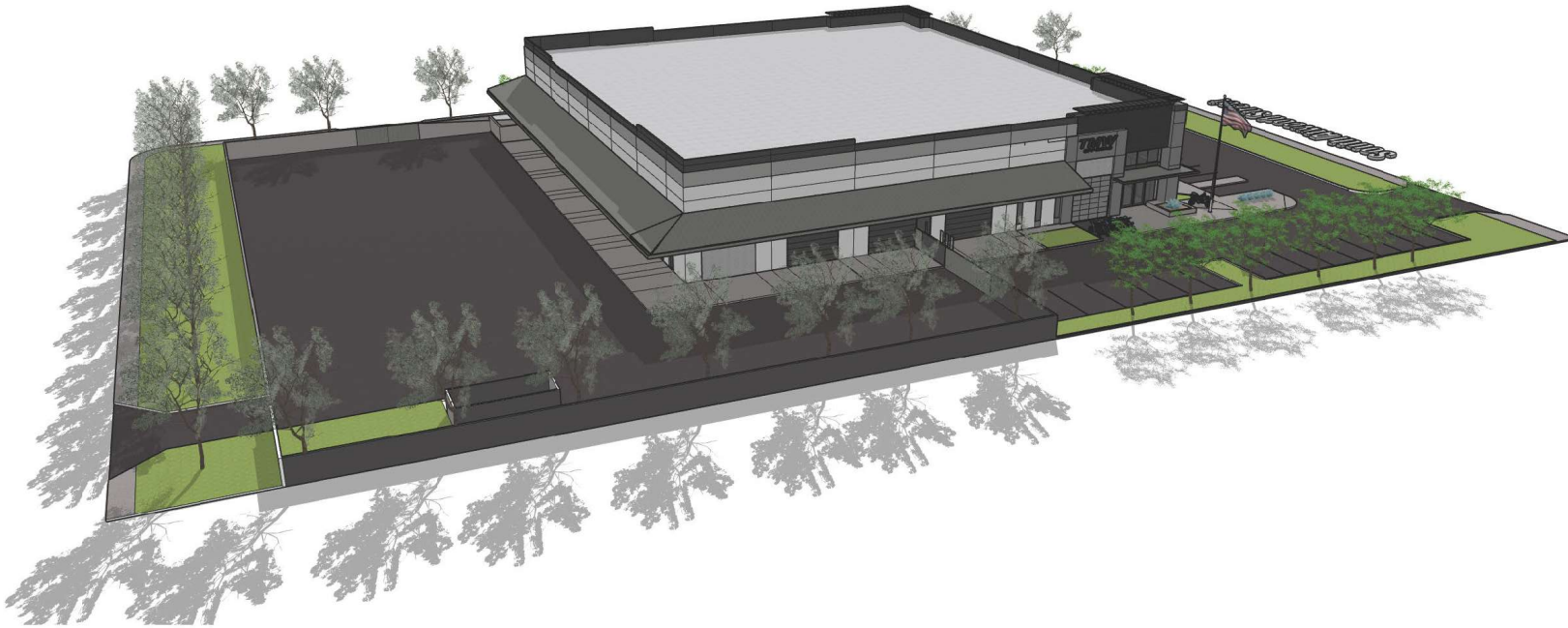
By:



E. WINNSTON AVE, VIEW - SOUTH
CONCEPTUAL PERSPECTIVE

A3.2

THIS DRAWING IS AN INSTRUMENT OF SERVICE AND THE PROPERTY OF
THE DESIGNER AND ARCHITECT AND SHALL REMAIN HIS PROPERTY. THE USE
OF THIS DRAWING SHALL BE RESTRICTED TO THE ORIGINAL SITE FOR WHICH
IT WAS PREPARED AND NO PART OF THIS DRAWING IS TO BE REPRODUCED,
COPIED, REPRODUCED, PUBLISHED BY ANY MEANS IN WHOLE OR
PART WITHOUT THE WRITTEN CONSENT OF THE DESIGNER AND ARCHITECT.



FAIRSWOETH CONSTRUCTION CO.
 4447 E. Broadway Rd., Mesa, Arizona 85209

A New Development for:
TMW Offroad, LLC
7453 South Atwood St.
Mesa, Arizona



Job #: **22-00026**

Date: **06-08-2022**

By:

STORAGE YARD & MAIN ENTRY - NORTH
CONCEPTUAL PERSPECTIVE

A3.3

THIS DRAWING IS AN INSTRUMENT OF SERVICE AND THE PROPERTY OF FAIRSWOETH CONSTRUCTION CO. AND SHALL REMAIN THE PROPERTY OF FAIRSWOETH CONSTRUCTION CO. THE USE OF THIS DRAWING SHALL BE RESTRICTED TO THE ORIGINAL SITE FOR WHICH IT WAS PREPARED AND NO PART OF THIS DRAWING IS TO BE REPRODUCED, COPIED, REPRODUCED, PUBLISHED BY ANY MEANS OR IN ANY MANNER WITHOUT THE WRITTEN PERMISSION OF FAIRSWOETH CONSTRUCTION CO.



FAINSWORTH CONSTRUCTION CO.
4447 E. Broadway Rd., Mesa, Arizona 85209

A New Development for:
TMW Offroad, LLC
7453 South Atwood St.
Mesa, Arizona



Job #: 22-000026

Date: 06-08-2023

By:



STORAGE YARD ENTRY - EAST
CONCEPTUAL PERSPECTIVE

A3.4

THIS DRAWING IS AN INSTRUMENT OF SERVICE AND THE PROPERTY OF
THE ENGINEER AND ARCHITECT AND SHALL REMAIN HIS PROPERTY. THE USE
OF THIS DRAWING SHALL BE RESTRICTED TO THE ORIGINAL SITE FOR WHICH
IT WAS PREPARED AND TO ANY OTHER USE WITHOUT THE WRITTEN CONSENT OF SUCH
ENGINEER OR ARCHITECT. PUBLICATION BY ANY METHOD IN WHOLE OR
IN PART IS PROHIBITED WITHOUT THE WRITTEN CONSENT OF THE ENGINEER AND ARCHITECT.