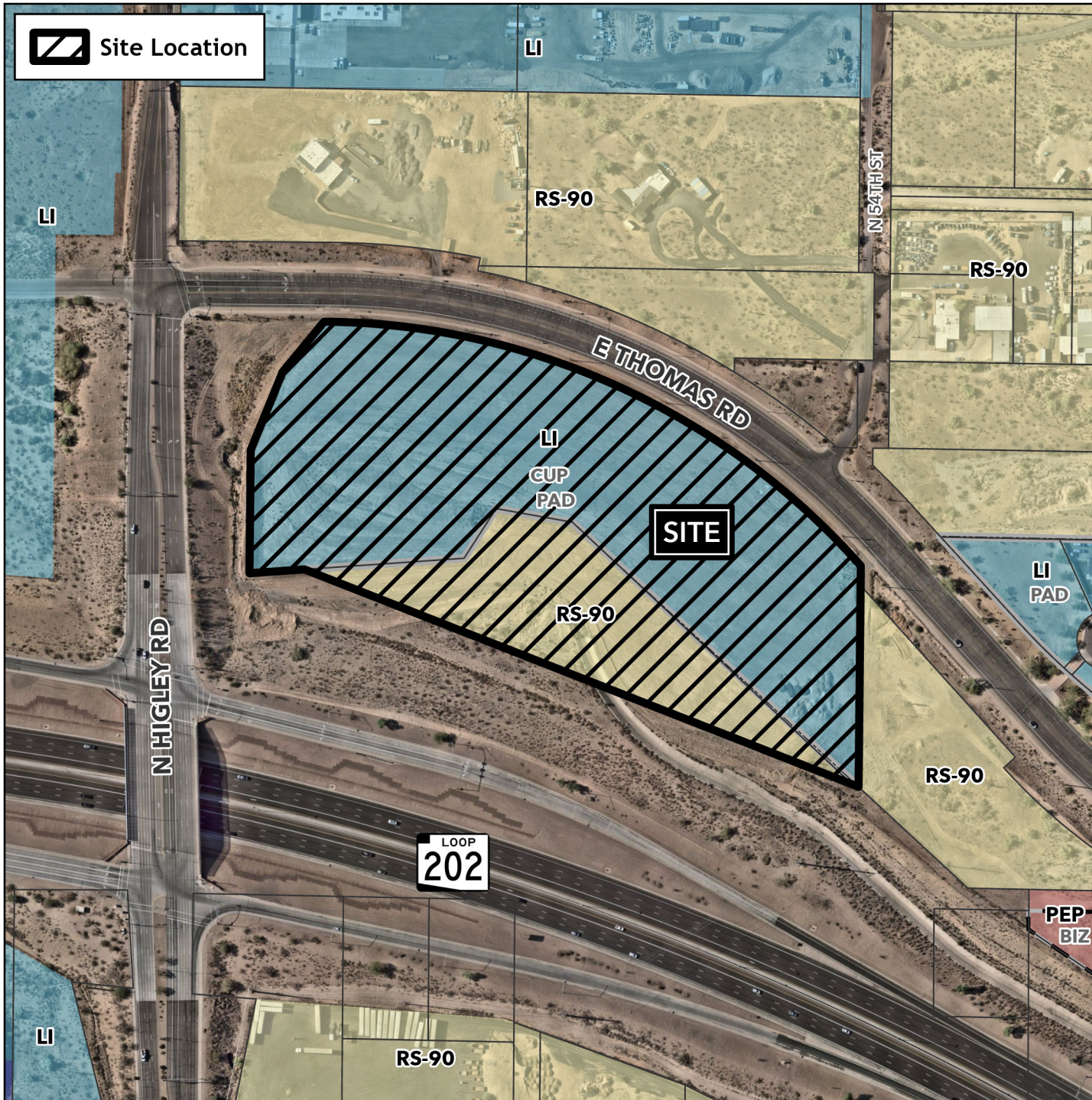


Planning and Zoning Vicinity Map: ZON24-01027

Case Details

 Site Location



Case:

ZON24-01027

Site / Address:

(District 5). 13.7± acres located approximately 265 feet east of the southeast corner of North Higley Road and East Thomas Road.

Request:

Rezone 3.5± acres from Single Residence-90 (RS-90) to Light Industrial with a Planned Area Development Overlay (LI-PAD), Rezone 10.2± acres from LI-PAD to LI with a new PAD, modification of a Council Use Permit, and Major Site Plan Modification for a Boat and Recreational Vehicle Storage facility.

