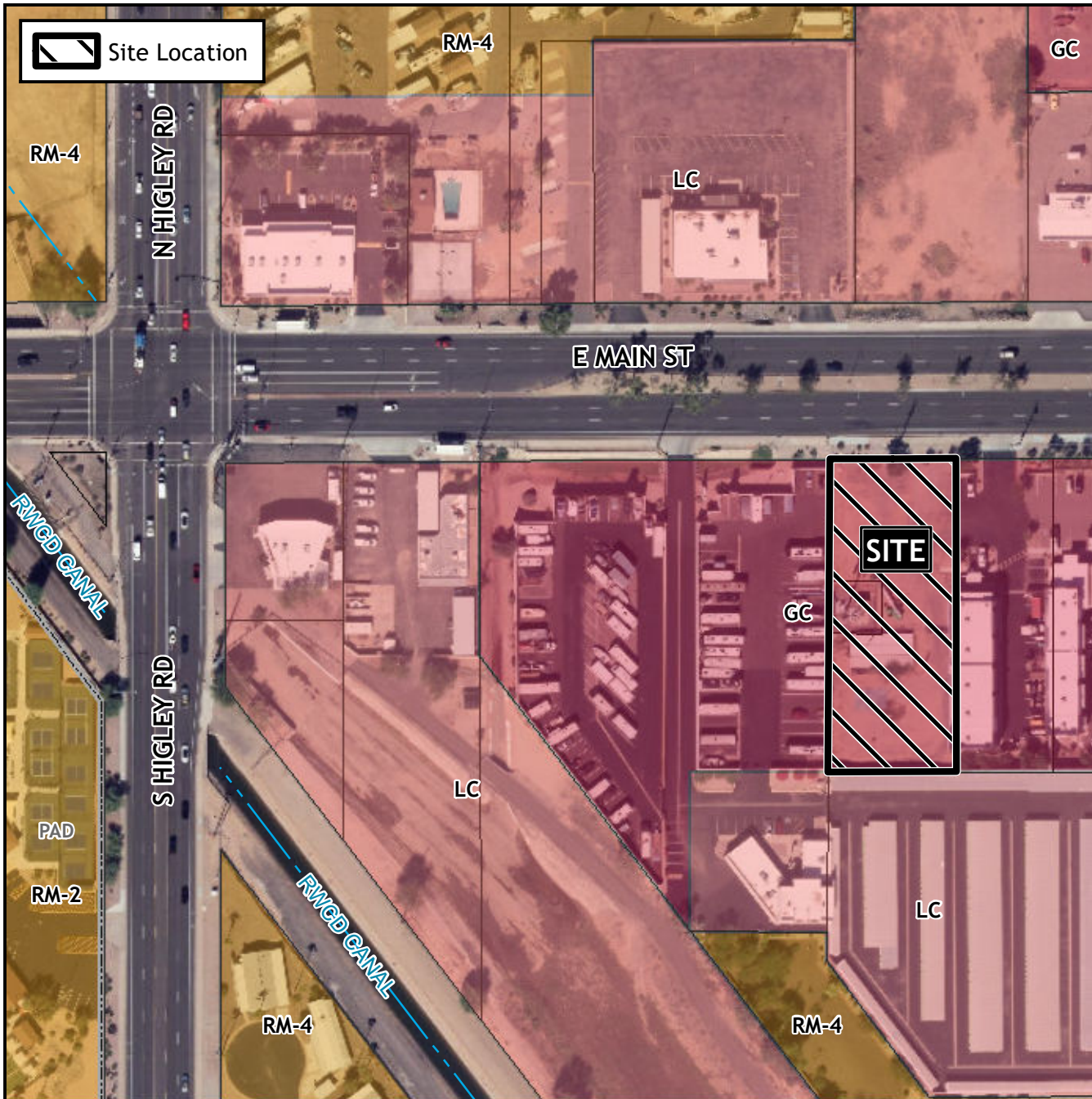


# Planning and Zoning Vicinity Map: ZON22-01233

## Case Details



### CASE:

ZON22-01233

### SITE / ADDRESS:

(District 2). Within the 5300 block of East Main Street (south side). Located south of Main Street and east of Higley Road (0.8± acres).

### REQUEST:

Major Site Plan Modification. This request will allow for a commercial development.

